



# Logitech K120 Keyboard USB Cable Replacement

This guide will help you replace your Logitech K120 keyboard's USB cable.

Written By: Marcus Liu



# INTRODUCTION

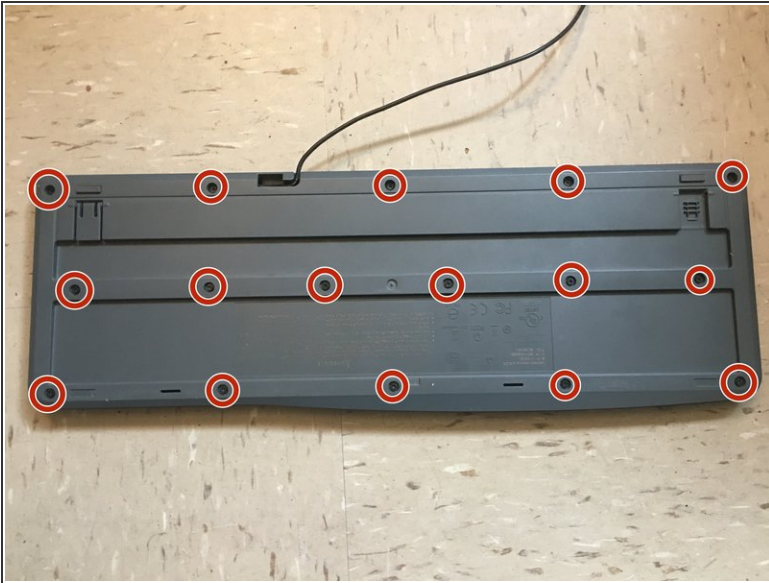
Cables can be damaged. This guide will help when you damage your Logitech K120 keyboard's USB cable.



## TOOLS:

- [Spudger](#) (1)
  - [Phillips PH000 Screwdriver](#) (1)
-

## Step 1 — Removing Screws



- Unscrew the highlighted screws using a Phillips #000 Screwdriver. Turn the screwdriver counter-clockwise.

## Step 2 — Separating The Keyboard's Chassis



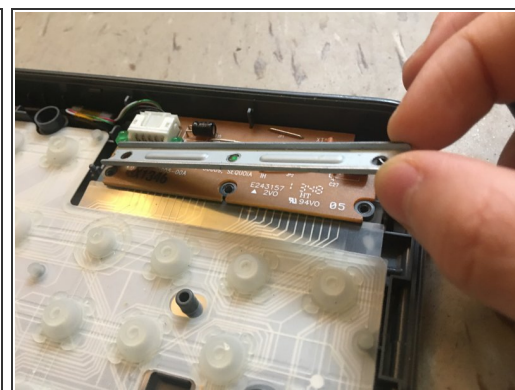
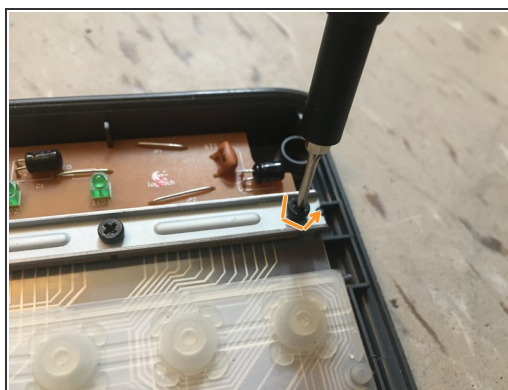
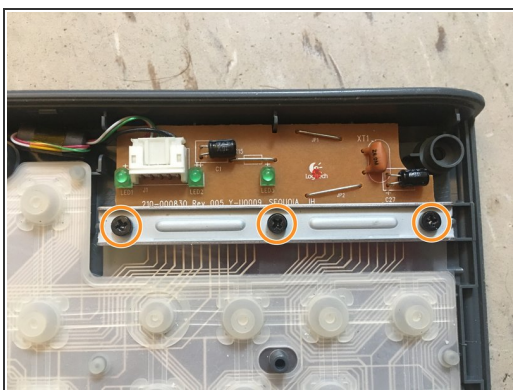
- Use the spudger to separate the top of keyboard from the bottom of the keyboard.

## Step 3 — Removing The Top Of The Keyboard



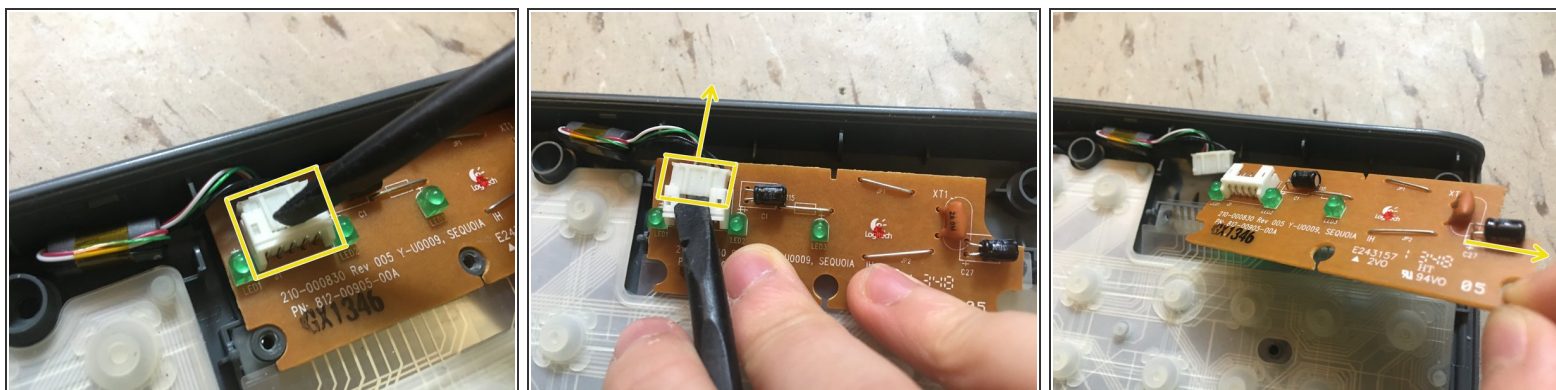
- Remove the top of the keyboard and put it aside.

## Step 4 — Removing The Bracket



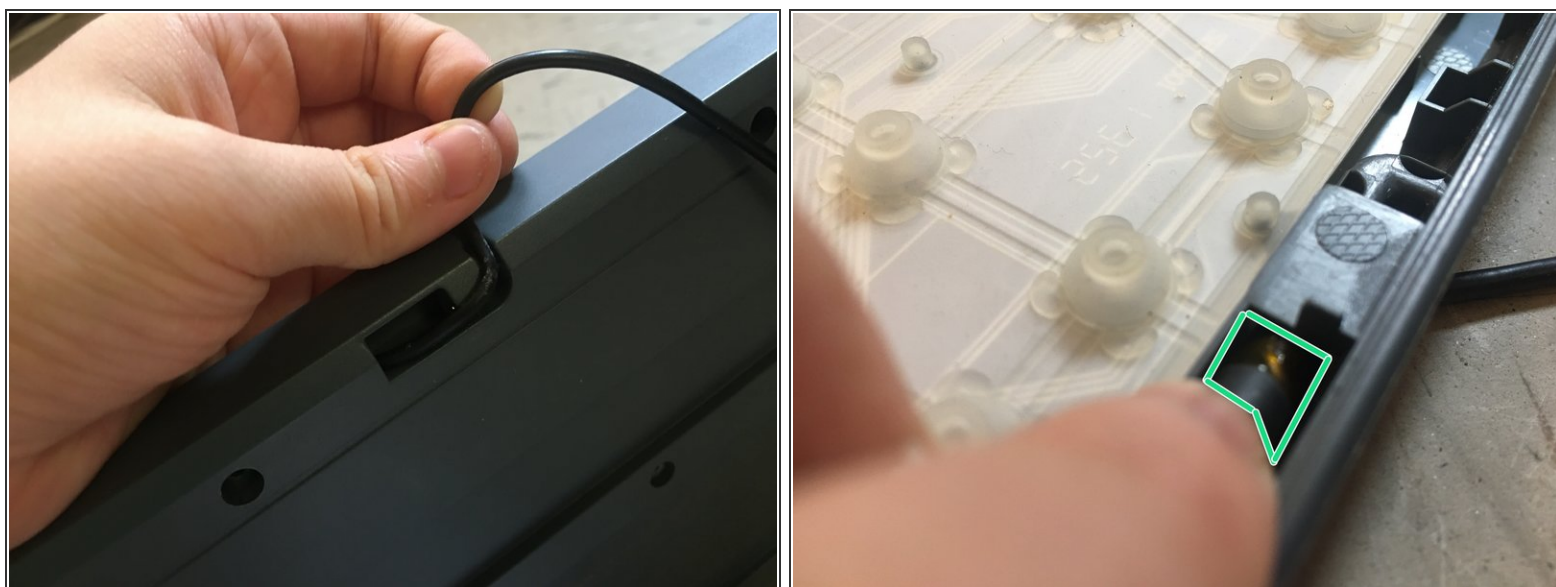
- Unscrew the highlighted screws using a Phillips #000 Screwdriver. Turn the screwdriver counter-clockwise.

## Step 5 — Removing The Circuit Board



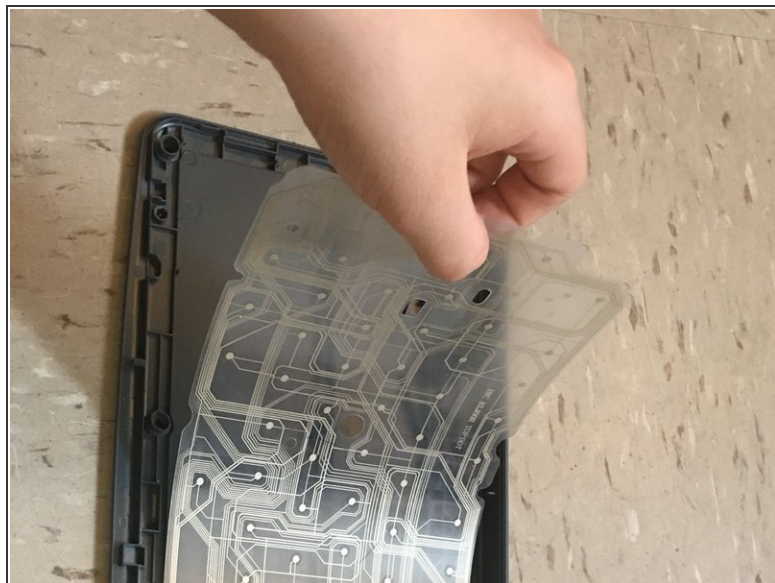
- Use the spudger and carefully pry the connector out of its socket. (Highlighted in the pictures)

## Step 6 — Removing The Cable



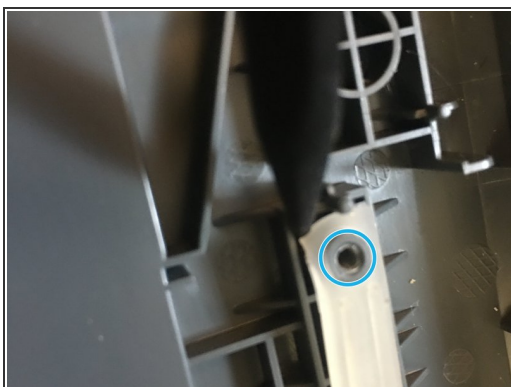
- Carefully nudge the connector out of the hole in which the cable enters the keyboard's chassis.

## Step 7 — Removing The Membrane



- Peel the membrane off carefully so that the membrane doesn't rip.

## Step 8 — Remove The 2nd Membrane



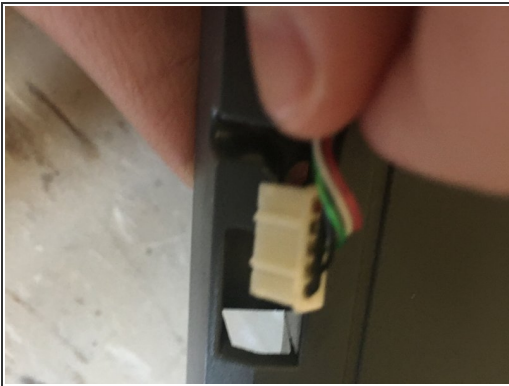
- Stick the sharp end of the spudger into the corner of the second membrane and bring the spudger partly underneath the membrane.
- Lift the membrane off of the first standoff. (Highlighted in the images)
- Peel the rest of the membrane off carefully so the membrane doesn't rip.

## Step 9 — Reassembly



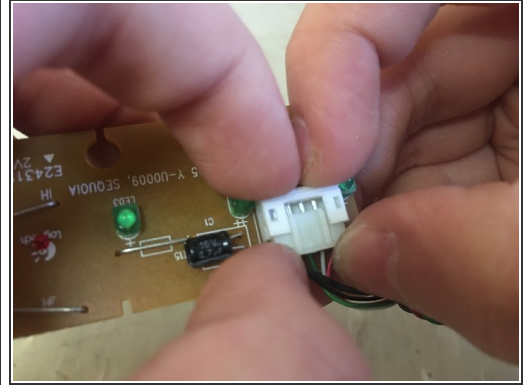
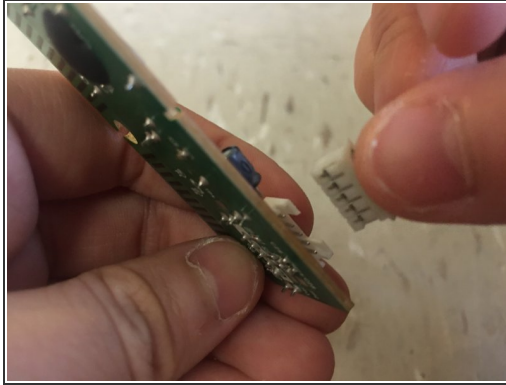
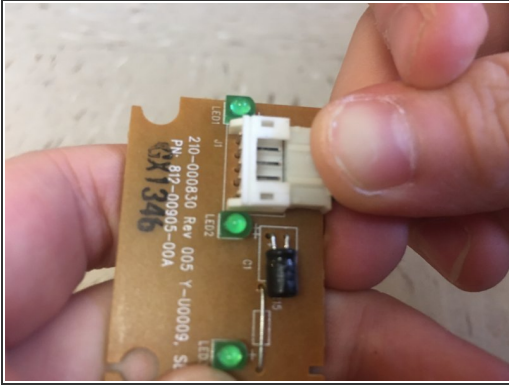
- To reassemble your Logitech K120 keyboard, follow the instructions in reverse.

## Step 10 — Install The New Cable



- Slide the new cable into the hole.

## Step 11 — Connect The New Cable



- Connect The Cable To The Circuit Board.

To reassemble your device, follow the instructions on how to reassemble your device in the prerequisite guide.