



Logitech K750 Keyboard ML2032 to CR2032 battery replacement

You will remove ML2032 battery and replace it with CR2032, but you need to *disable solar panels first because CR2032 can not be charged.

Written By: Endrju



INTRODUCTION

Update: You can now buy ML3032 batteries online. You no longer need to disable the solar panels.

Logitech support will not help you and they do not have ML2032 as a spare part.

Maxell - battery manufacturer answered me this:

Unfortunately ML type batteries are industrial batteries which we sell to OEMs only. Due to **strict health and safety purposes** we are not allowed to sell this type of batteries to endusers.""

The claim from Maxell is also the reason why I do not believe buying ML2032 from eBay nor Amazon is safe.

So I decided to modify my keyboard. If you disable solar panels, there will not be any charging for the battery and then you can use regular CR2032 battery which is easy to buy and replace.

And since I did not find any guide like this I decided to share the steps with you.



TOOLS:

- [Phillips #0 Screwdriver](#) (1)
or Phillips 1 Screwdriver
- [Soldering Iron](#) (1)
- [Solder Vacuum](#) (1)
- [Electrical Tape in 6 Assorted Colors](#) (1)



PARTS:

- [CR2032 Lithium Battery](#) (1)
- [ML2032 Rechargeable Battery](#) (1)

Step 1 — Battery



- The battery tray is near the top edge of the bottom side of the keyboard. It is designed to be easy to insert, difficult to remove.

Step 2



- I used a putty knife to force the tray back out. Just push it into the gap along the bottom, then angle the handle to direct the force of the tip away from the body of the keyboard. A few taps should get you this far.

Step 3 — Note battery orientation.



- Once you get the "ears" past the edge, just slide the tray the rest of the way out.
- Note the battery type carefully: It is a ML2032, which is rechargeable. It is NOT the same as a CR2032, which is not rechargeable. Putting a CR2032 in here is a recipe for bad things to happen.
- Note the proper orientation (see picture), positive + symbol facing towards bottom. Negative side facing keys. Slide the tray with the new battery back in. The battery can be oriented incorrectly and NOT work.
- If you want to make it easier to remove the battery the next time, you could trim the ears slightly. Or slice some notches in the plastic "springs" to weaken a little.

Step 4 — Remove old battery



- Steps are described in this guide [Logitech K750 Keyboard Battery Replacement](#). Turn off the keyboard before removing the battery.

⚠ ML2032 battery can be dangerous so be carefull. For more details read [Maxell Safety Data Sheet](#) and [Maxell Safety Instructios](#).

i For more information about ML type bateries read this [Lithium Manganese Dioxide Rechargeable Battery](#).

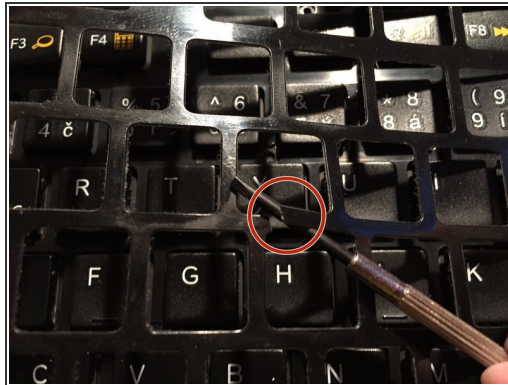
- **Trash old ML2032 battery in special container!**

Step 5 — Now decide how you will continue in this guide



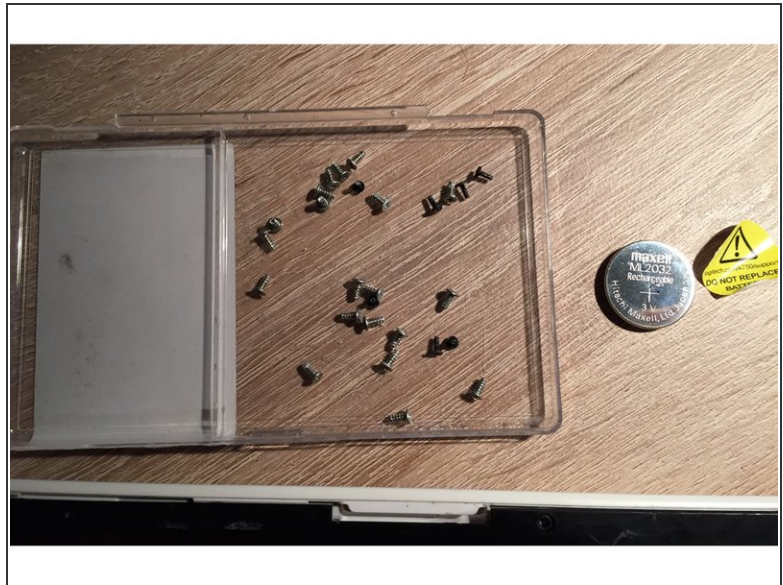
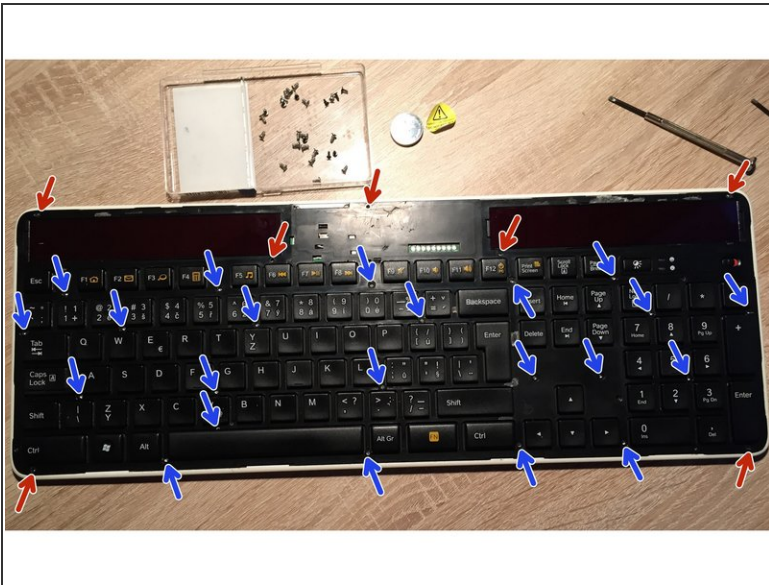
- i You can just simply cover **both** solar panels with some thick black tape (like electrical tape) and then continue to the step 10. If you decide for this you need to **make sure** (this is really important!) that your Solar app is showing zero energy received from the solar panels (CL2032 can not be recharged)!
- i Or you decide for **100% working** but more complicated solution which involves peeling off keyboards plastic top deck (it covers screws) and desoldering wires form the solar panels. Your keyboard cover might not stick back as good as it was. In this case continue to the next step.

Step 6 — Peel off the plastic top deck



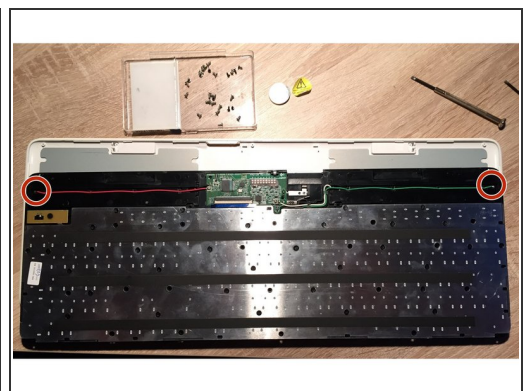
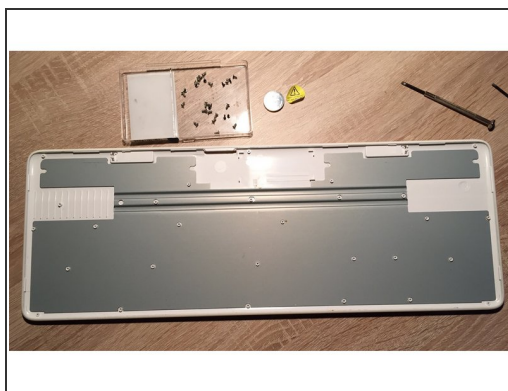
- Be careful to not crack the plastic deck. Don't pull it off hard.

Step 7 — Unscrew the screws



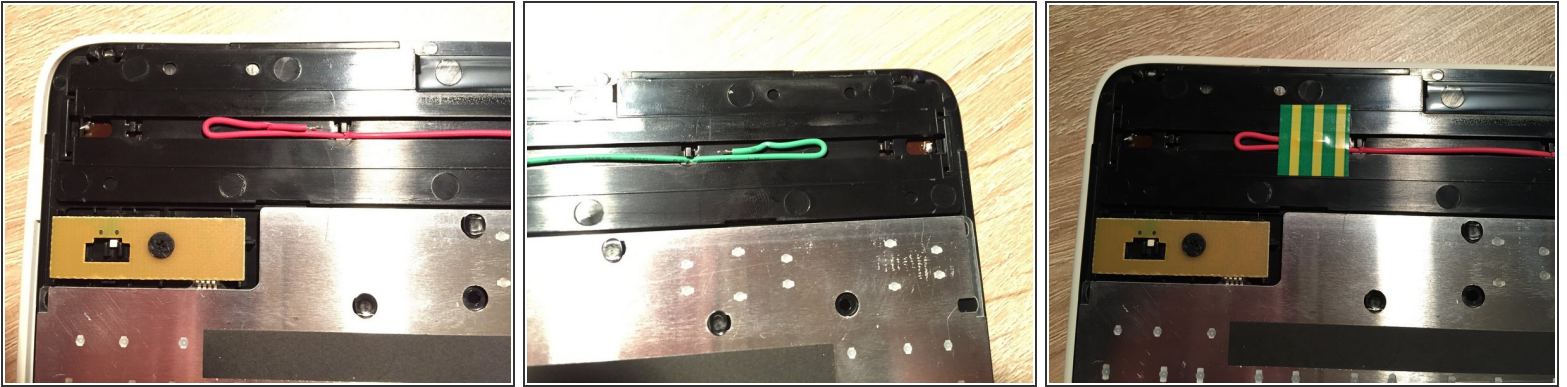
- Remove the seven black Phillips screws.
- Remove the 22 silver screws.
- ⓘ Your model may only have 21 silver screws.
- Put the screws somewhere into the bowl to not lose them and try to remember the position of the black ones.

Step 8 — Remove and flip the top cover



- Unclip the back pannel from the front (keys) pannel.
- When you flip the (keys) pannel you can notice that both solar pannels have a pair of cables.

Step 9 — Desolder one wire from both solar panels



- I have decided to desolder the long cable (red and green one) because they are far away from the logic board so I will not transfer heat to it while desoldering them.
- Tape desoldered cables so they do not come in contact with anything.

Step 10 — Insert new CL2032 battery



- Insert fresh CL2032 battery in the battery compartment - check the polarity and close battery tray.
- (i) Note:** your Solar app will be showing zero energy because there is not power coming from the solar panels to the logic board.

To reassemble your device, follow these instructions in reverse order.