



Logitech M125 Button Plate Replacement

How to replace the button plate on your Logitech M125.

Written By: Rob Myrick



INTRODUCTION

If your Logitech M125 has a cracked or overly worn top cover, use this guide to replace the button plate.

The button plate is what translates your button presses from your fingers to the internal switches that tell your computer to select an object on the screen. It also serves as a protective housing for the internal components and as a hand rest. With so many important functions it is vital to ensure that the button plate on your mouse is in good condition.

If you are having issues clicking on items or the mouse is not responding to your button presses, consider using our [troubleshooting page](#). before replacing the part.

Be sure to unplug your mouse before proceeding with this guide.



TOOLS:

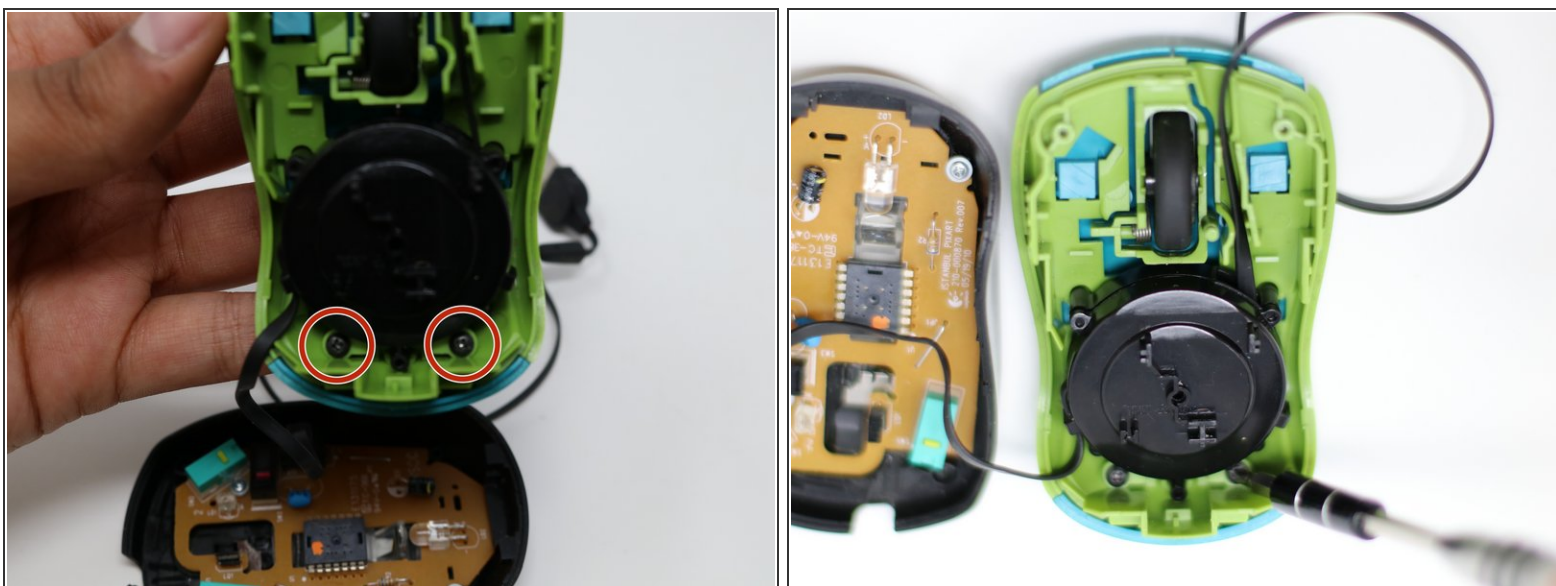
- [Spudger](#) (1)
 - [Phillips #0 Screwdriver](#) (1)
 - [iFixit Opening Tools](#) (1)
-

Step 1 — Button Plate




- Turn the device over and remove the two 0.5mm screws near the front of the mouse by using a Phillips #0 screwdriver.
- ⓘ The black screws used in the Logitech M125 frame are all the same size and do not need special consideration for keeping them separated. Silver colored screws are used on the circuit board and have broader heads.
- Once the screws are removed, open the mouse from the front as it pivots at the rear.

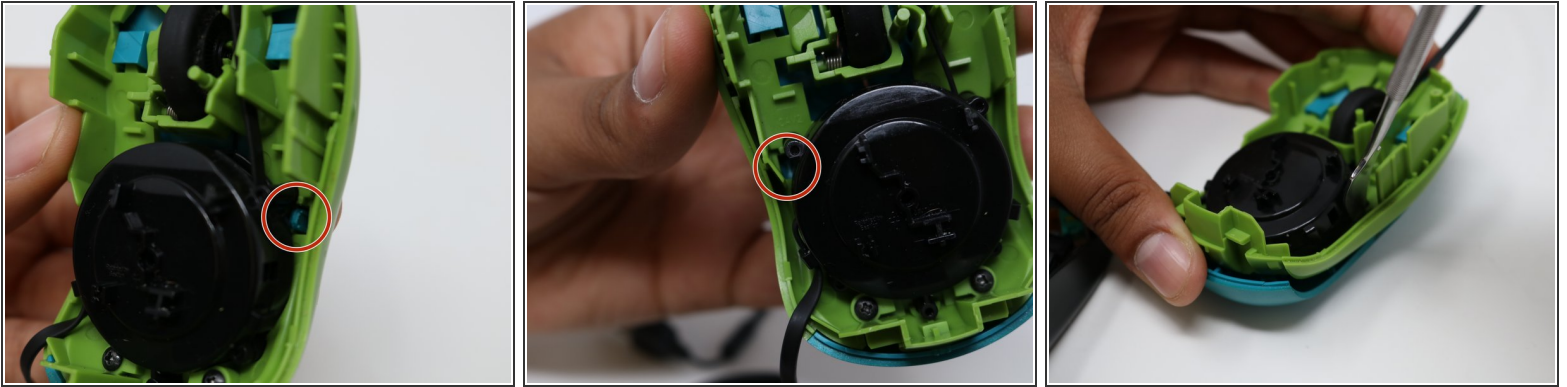
Step 2



- Once the mouse is opened, remove the two black 0.5mm screws located towards the back of the mouse. These are the retention screws for the mouse button plate.

 These screws will also require the Phillips #0 screwdriver.

Step 3



- There are two tabs that further secure the mouse buttons to the frame. They are located on either side of the mouse cord retracting mechanism.
- ⓘ The tighter confines of the mouse interior will be easier to navigate with metal prying tools. While plastic tools are preferred for most plastic devices, they are too large to access the left tab in the picture.
- To dislodge the tabs, use a prying tool while pressing down on the back of the mouse. When prying, push the tab towards the outside of the mouse.

Step 4



- To finish removing the button plate, continue lifting the rear of the plate until the tabs have fully left their slots.
- Once the tabs are clear, push the plate towards the front of the mouse and lift.

Step 5



- The mouse button plate has now been fully removed. In order to install the replacement, follow the instructions for this guide in reverse.

To reassemble your device, follow these instructions in reverse order.