



Logitech M125 Scroll Wheel Replacement

How to replace the scroll wheel of your Logitech M125.

Written By: Rob Myrick



INTRODUCTION

When the scroll wheel of your Logitech M125 mouse becomes worn or torn, it can prevent smooth motion when scrolling and needs replacement.

The scroll wheel allows you to navigate up and down on a web page or document. It also allows middle-clicking in programs that support it.

The housing in the mouse's frame for the scroll wheel and the wheel spring are delicate. Be very careful not to over apply pressure, or you may risk damaging both the scroll wheel and the wheel spring.

Be sure to unplug your mouse before proceeding with this guide.



TOOLS:

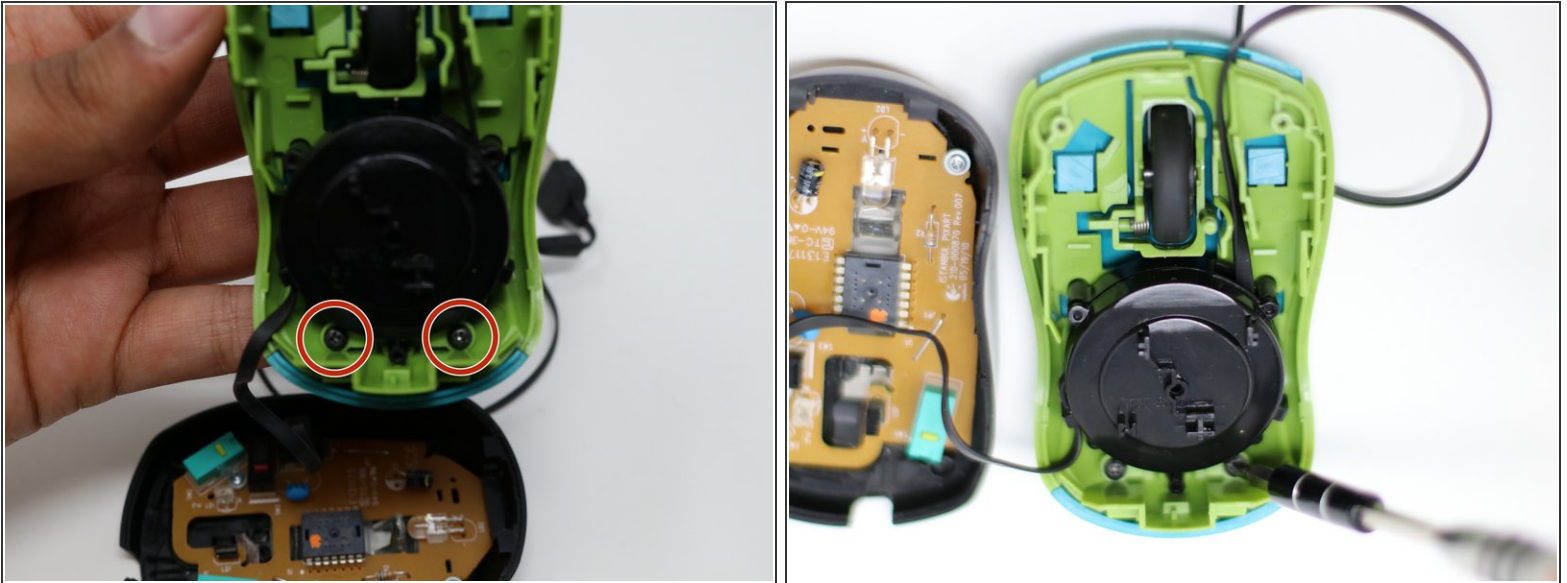
- [Spudger](#) (1)
 - [Phillips #0 Screwdriver](#) (1)
 - [iFixit Opening Tools](#) (1)
-

Step 1 — Button Plate




- Turn the device over and remove the two 0.5mm screws near the front of the mouse by using a Phillips #0 screwdriver.
- ⓘ The black screws used in the Logitech M125 frame are all the same size and do not need special consideration for keeping them separated. Silver colored screws are used on the circuit board and have broader heads.
- Once the screws are removed, open the mouse from the front as it pivots at the rear.

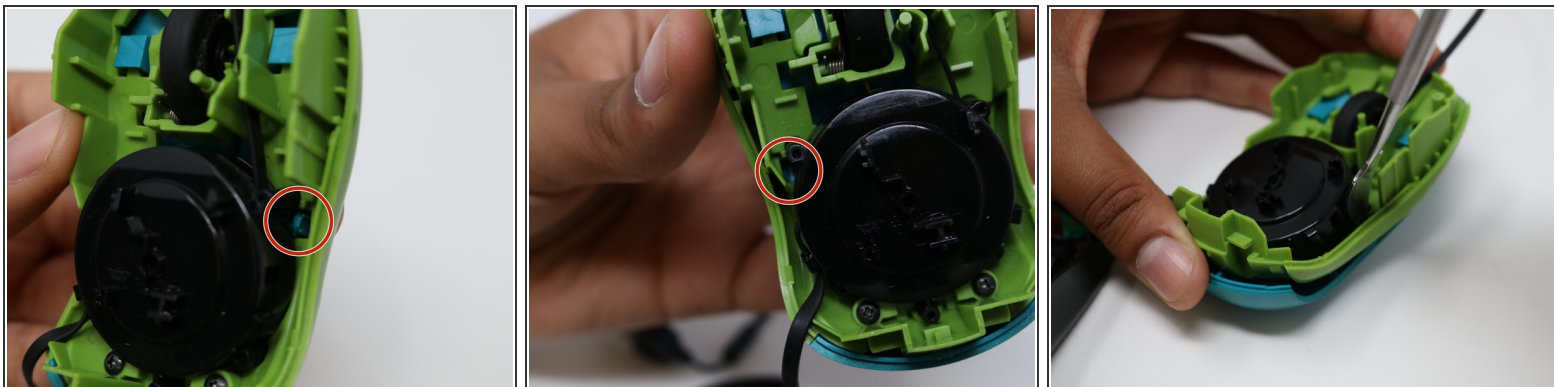
Step 2



- Once the mouse is opened, remove the two black 0.5mm screws located towards the back of the mouse. These are the retention screws for the mouse button plate.

 These screws will also require the Phillips #0 screwdriver.

Step 3



- There are two tabs that further secure the mouse buttons to the frame. They are located on either side of the mouse cord retracting mechanism.
- ⓘ The tighter confines of the mouse interior will be easier to navigate with metal prying tools. While plastic tools are preferred for most plastic devices, they are too large to access the left tab in the picture.
- To dislodge the tabs, use a prying tool while pressing down on the back of the mouse. When prying, push the tab towards the outside of the mouse.

Step 4



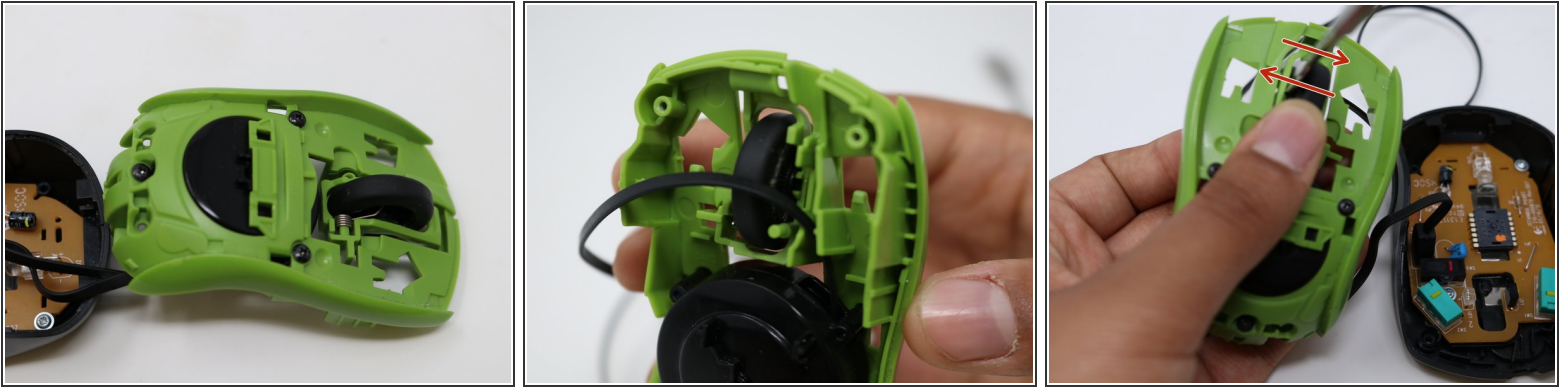
- To finish removing the button plate, continue lifting the rear of the plate until the tabs have fully left their slots.
- Once the tabs are clear, push the plate towards the front of the mouse and lift.

Step 5




- The mouse button plate has now been fully removed. In order to install the replacement, follow the instructions for this guide in reverse.

Step 6 — Scroll Wheel



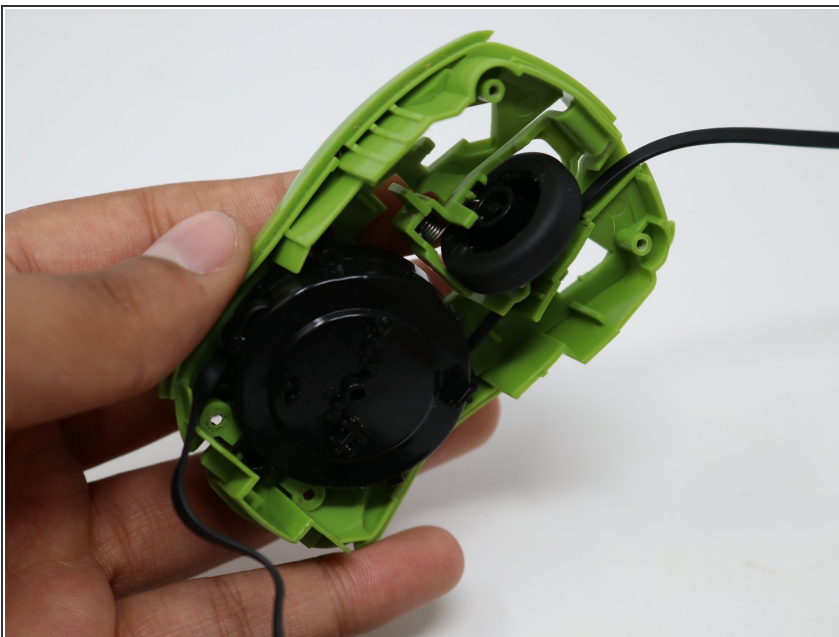
 The scroll wheel is on a pivoting mechanism that allows it to perform middle-clicks.

 It is best to brace the bottom of this mechanism as you're holding the frame in order to keep it steady and prevent it from hyper extending and breaking.


- Insert a spudger between the left side of the scroll wheel and the housing. Then, rotate the spudger clockwise, so that it is pushing the center of the housing away from the wheel. Do this while pressing down on the wheel with your thumb.

 Use firm, but gentle pressure when applying leverage to avoid breaking the scroll wheel housing.

Step 7



- Once you feel some give while pressing down on the wheel with your thumb, turn it over to ensure that the wheel has fully separated from the housing.

 Be very careful with the spring while removing the wheel. If it is bent out of the original shape it will not prevent the mouse wheel from spinning freely when reassembled.

Step 8



- With the old scroll wheel removed, perform these steps in reverse using the replacement.
- ⓘ The open side of the wheel will be where the spring is inserted, and will need to be aligned facing the spring when being installed.

To reassemble your device, follow these instructions in reverse order.