



# Logitech M150 Mouse Teardown

Near complete disassembly of the mouse.

Written By: Emily Harris



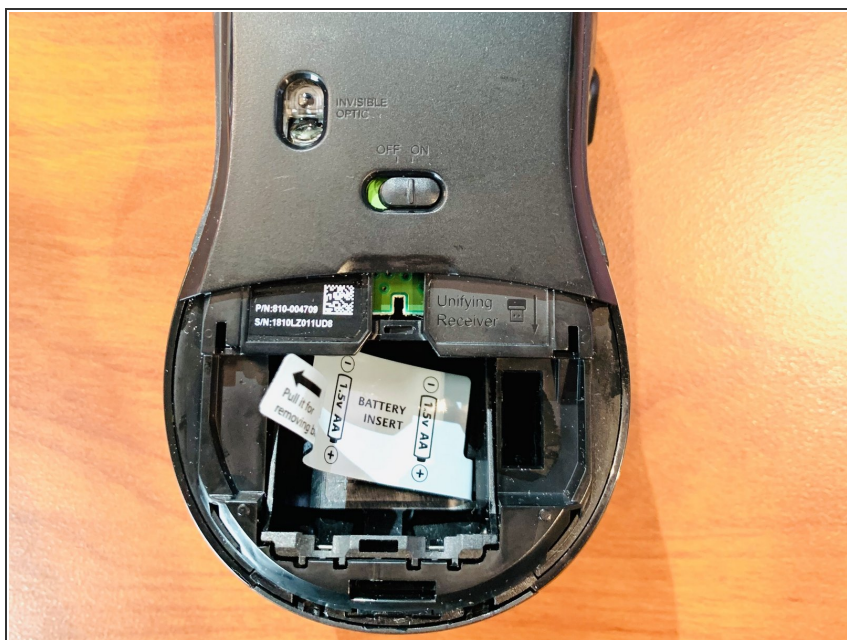


## TOOLS:

- [Phillips #00 Screwdriver](#) (1)
- [Flathead Screwdriver](#) (1)
- [Spudger](#) (1)

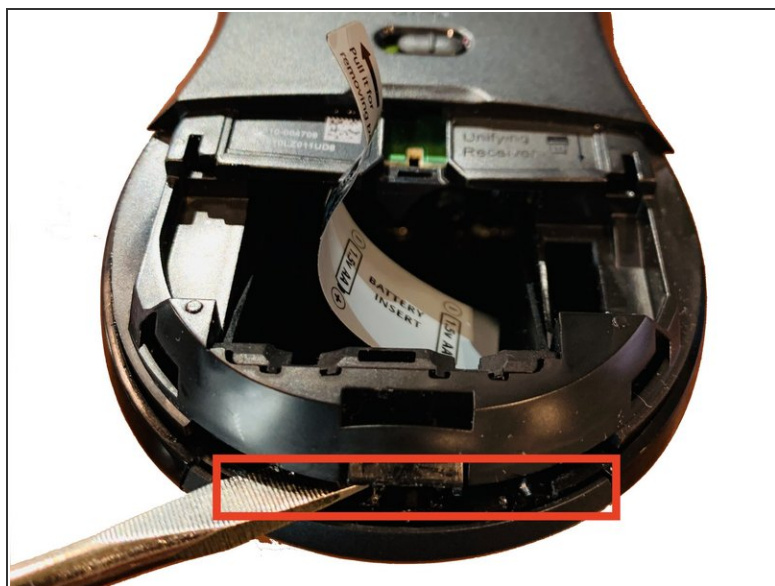
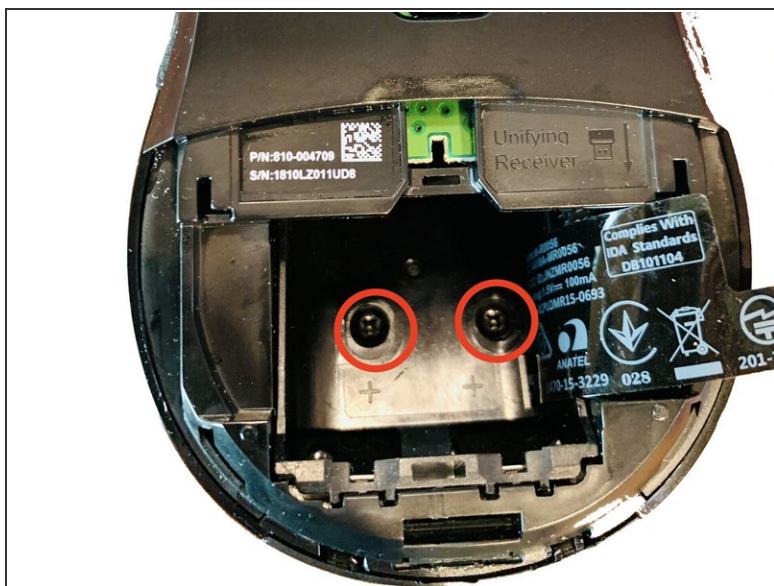


## Step 1 — Flip the mouse on it's back



- Remove the battery door cover and flip the mouse on it's back

## Step 2 — Beginning the disassembly



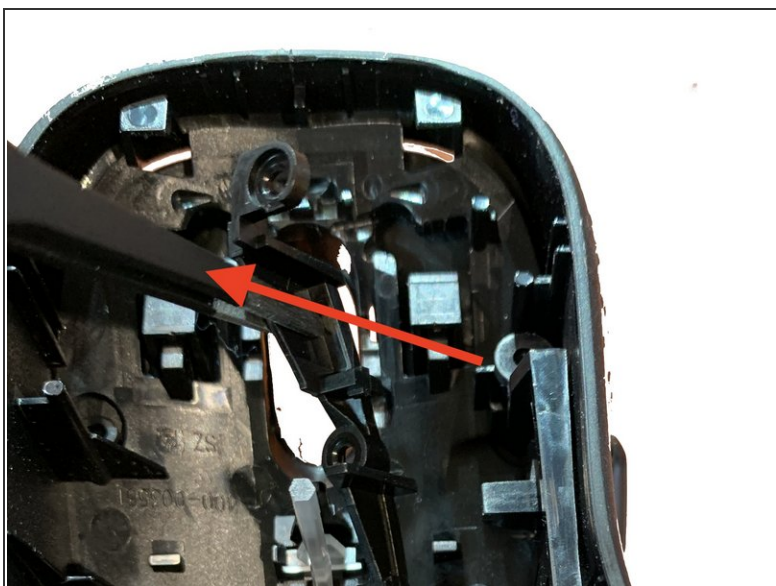
- Remove the **two screws** in the battery bay that hold the top grip to the base of the mouse.
- Use a flat head screwdriver and wedge the blade in-between the top and bottom part of the mouse. There is a small cut-out to work with.

### Step 3 — Disassemble the grip



- Separate the top and bottom parts of the mouse
- Remove the three Philips head screws holding in the forward/back buttons

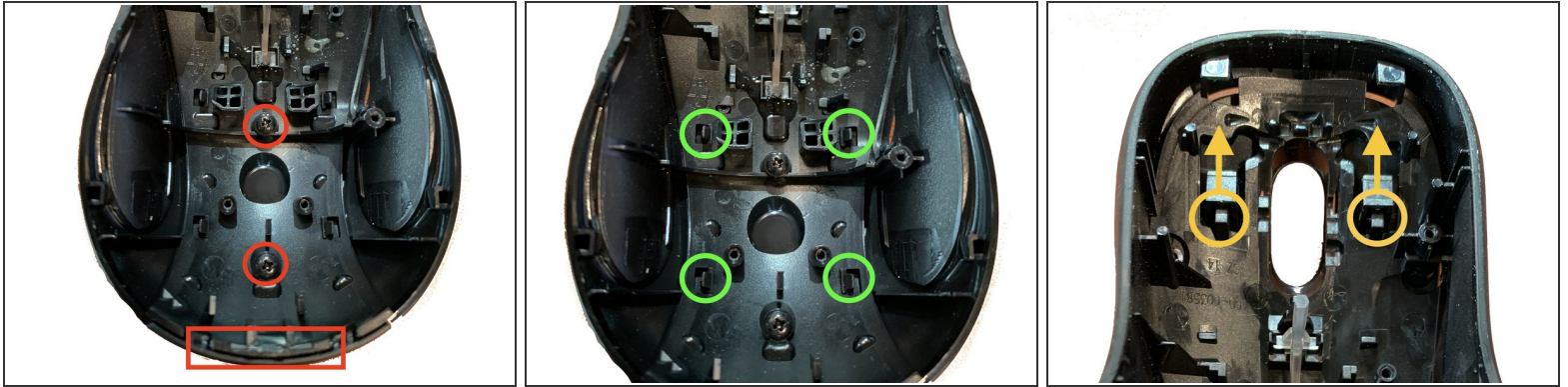
## Step 4 — Remove the Forward/Back Buttons



- Using tweezers or your hands, *carefully* remove the plastic buttons by following the direction of movement in each image.
- You need to make sure not to bend or pull too hard to remove the buttons.



## Step 5 — Remove the Left/Right click Buttons



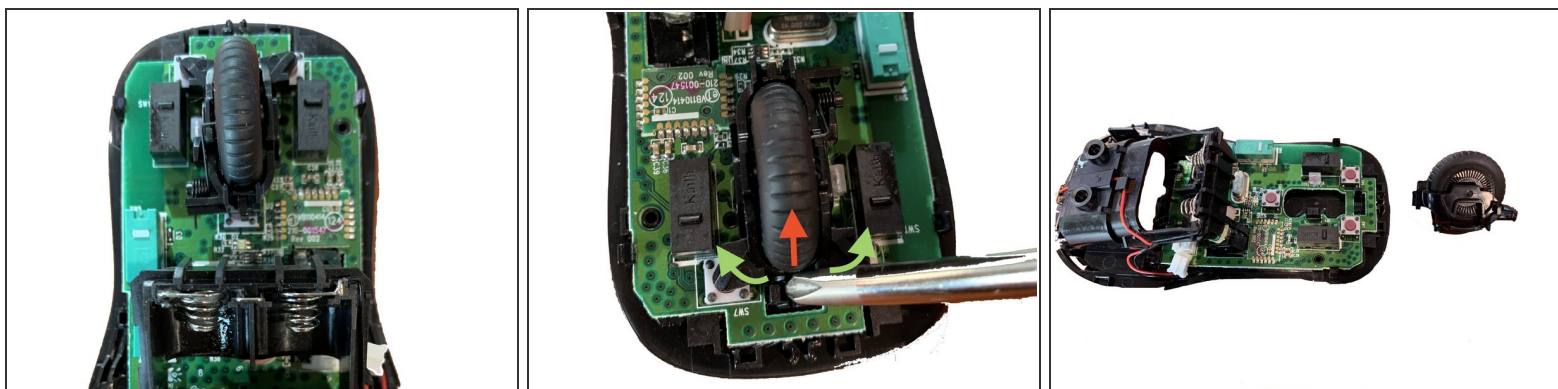
- Use a Philips screwdriver to remove the two remaining screws from the grip.
- Then, gently pry the mouse button cover from the grip using a flat-edge screwdriver. There is just enough space to get a fine driver wedged in place.
- Use your fingernails or a spudger tool to push each plastic tab back (green)
- Lastly, slide the button check clips down and then up in the direction indicated by the arrows to remove the button cover from the grip.

## Step 6 — Remove the Button Cover



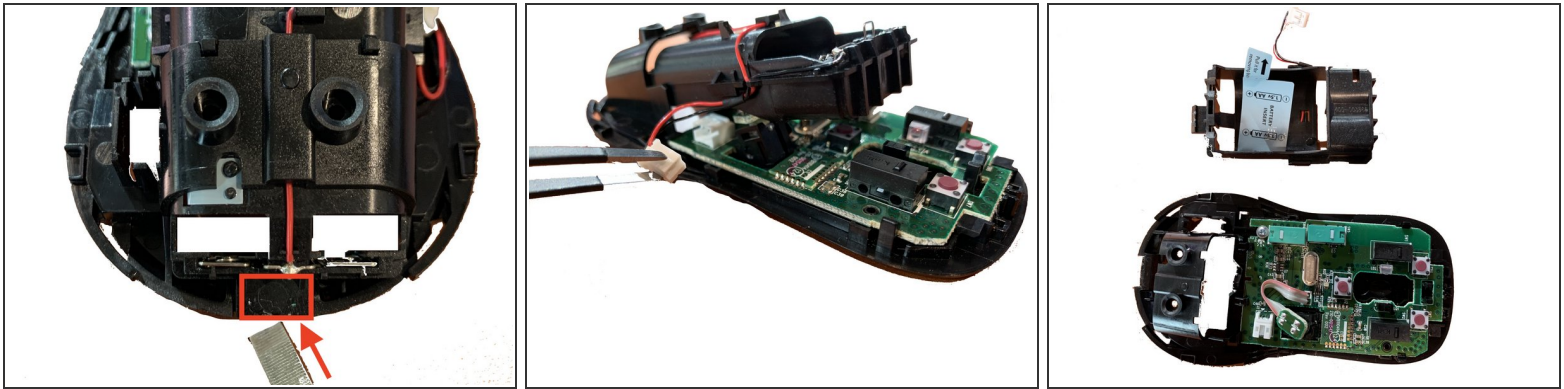
- The grip and cover should be completely separated at this point
- This is a good time to do some cleaning. You can wash all of the plastic components and scrub off any dirt.

## Step 7 — Remove the Scroll Wheel



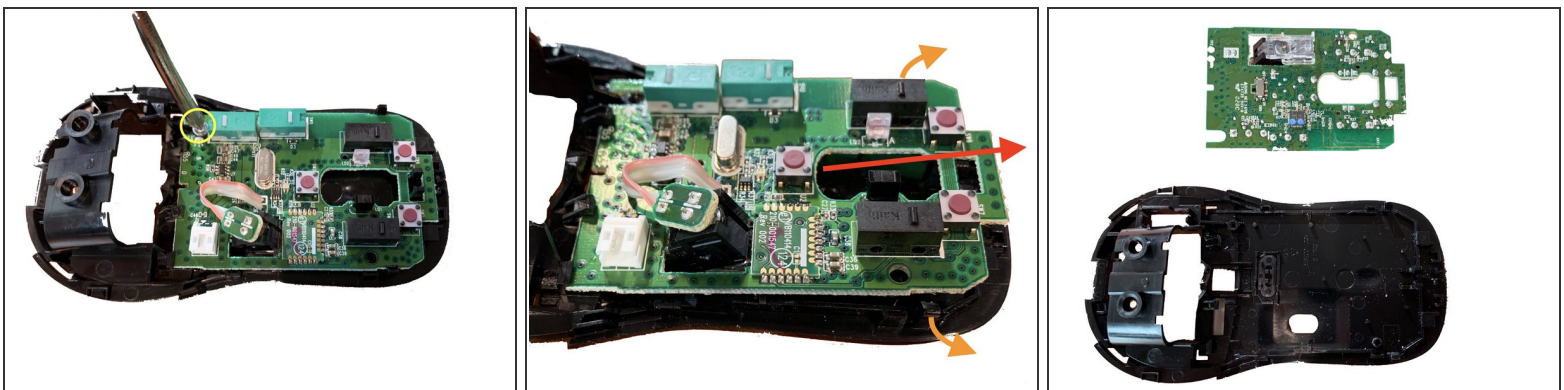
- Use a Philips screwdriver to lift the tip of the scrollwheel up and away from the top of base of the mouse
- The clips holding it in place should click when you remove the wheel and should make a similar noise if you replace them

## Step 8 — Remove the Battery Bay



- Insert a flathead screwdriver into the narrow gap between the clasp of the battery bay and the base of the mouse
- Apply a fair amount of upward force to release the battery bay from the base
- Next, remove the battery cable and slide the whole battery bay from the base of the mouse

## Step 9 — Remove the Logic Board



- Use a Philips screw to remove the only screw securing the board to the base
- Push the retaining clasps outwards and slide the whole logic board out at a 20 degree angle. It should not require any force and come free



## Step 10 — Disassembly Complete



- Follow these steps in reverse to rebuild the mouse.