



# Logitech M185 Wireless Mouse Disassembly

This guide will perform the basic disassembly of this Logitech mouse.

Written By: Karmanyaah Malhotra





## TOOLS:

- [Phillips #0 Screwdriver](#) (1)
-

## Step 1 — Remove the Battery Cover and Battery



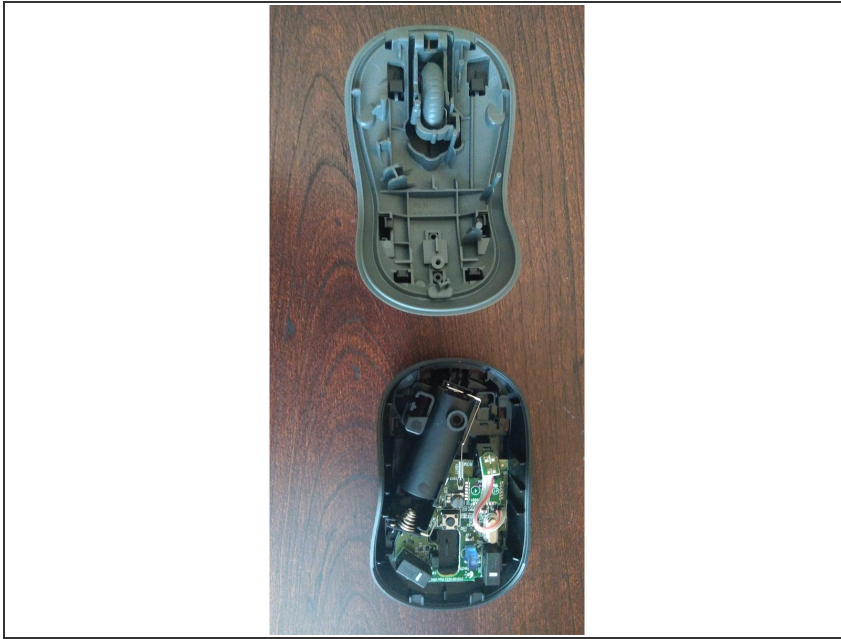
- Remove battery cover by sliding it off.

## Step 2 — Unscrew



- Unscrew the screw under the battery

### Step 3 — Remove the top cover



- ⓘ There is no need to remove it's rubber feet since it is held together by only one screw.
- Wiggle the grey part of the top to remove it by pulling it towards you(away from the scroll wheel).
- ⚠ Do **not** pull the grey cover towards the top and do **not** pull the part near the keys.
- ⓘ The image is what your mouse should look like in the end.

To reassemble your device, follow these instructions in reverse order.