



Logitech M215 Button Plate Replacement

If the buttons brake or become dirty, use this guide to replace the button face plate.

Written By: Hannah Pate



INTRODUCTION

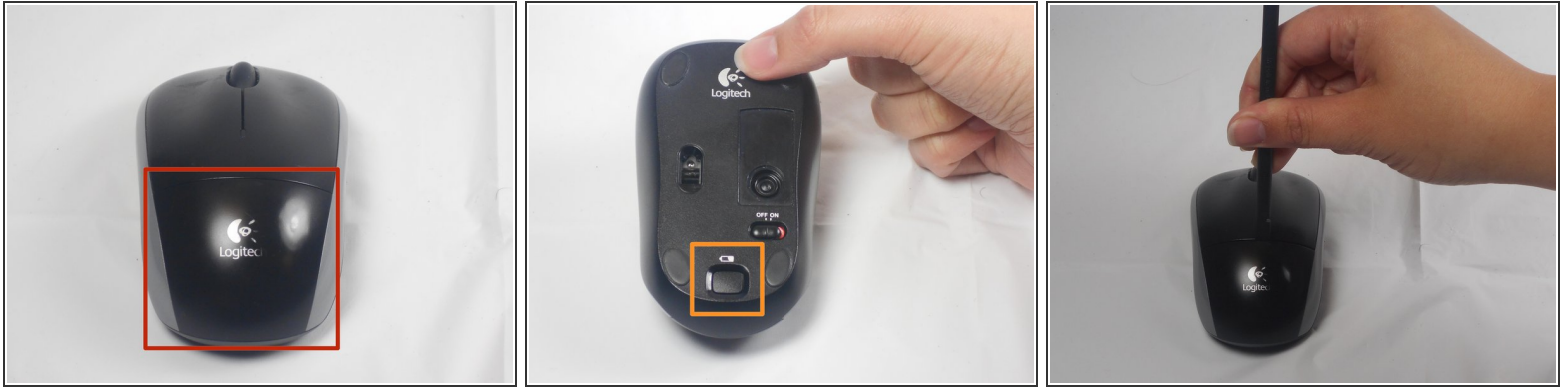
You will need a screw driver and prying tool for this guide. Some of the parts are hard to remove at first and have some force applied to them.

TOOLS:

- [Phillips #0 Screwdriver](#) (1)
- [iFixit Opening Picks set of 6](#) (1)
- [Plastic Cards](#) (1)

Optional

Step 1 — Remove the battery cover



- The battery compartment cover is located on the top of the mouse. The seam running horizontally across the mouse is the top of the cover.
- There is a button to pop off the cover. It is located on the bottom of the mouse. you may need to press hard on this button to pop the cover.
- If the button does not work, you will need to pry off the cover. You can use your fingernails or a prying tool in order to do this, as seen in the third image.

Step 2 — Remove old battery



- Remember to insert the new battery in the same orientation as the old one. The positive (plus) end should be facing away from the buttons.

Step 3 — Top Cover



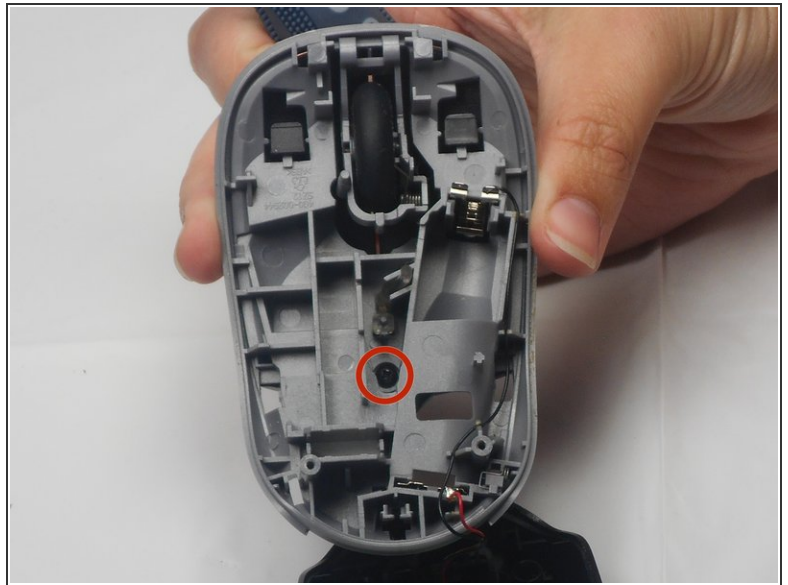
- The pads on the underside of the mouse hide the screws. Remove these first. You may need to use your fingernails or a prying tool.
- There will be two 0.5mm phillips head screws. Both will be underneath the bottom two pads.

Step 4



- Pry the top cover off. You may need to use a pry tool to help.

Step 5 — Button Plate



- Use your fingernail to carefully remove the two skid stickers from the fat (non-button) end of the bottom of the mouse to reveal two Philips head screws. Remove these, then unclip the bottom cover. Don't get the sticky dusty. Now remove buttons; they're both attached by one 0.5mm Phillips head screw. It is located in the center of the top cover.

Step 6 — Pry off buttons



- The button are now only attached by a small overhang near the front. You will need to use the pry tool to push the button plate off of this overhang as shown.
- The button plate should be able to be completely removed at this point.

To reassemble your device, follow these instructions in reverse order.