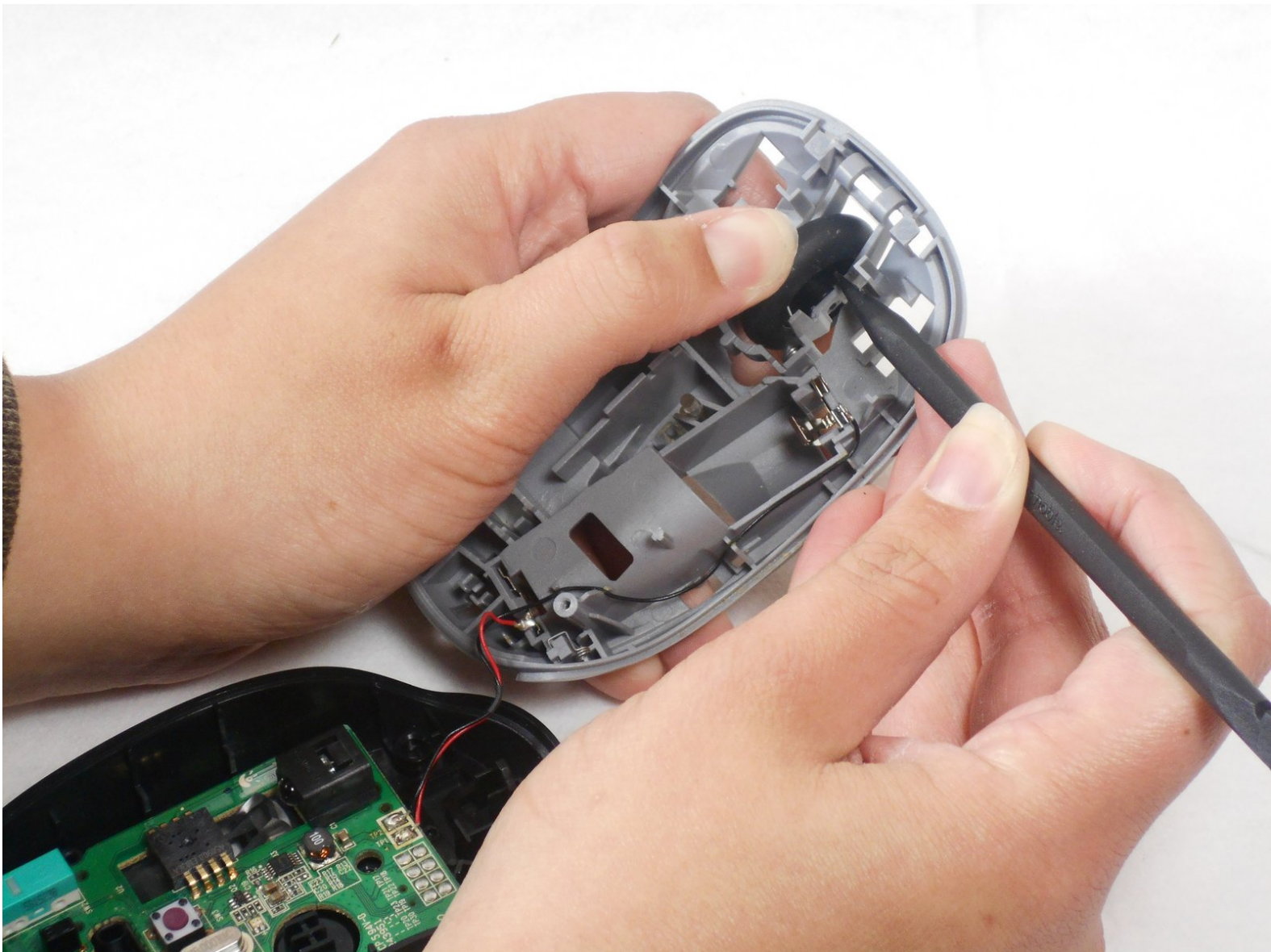




# Logitech M215 Scroll Wheel Replacement

Replace the scroll wheel in the event that the wheel does not respond.

Written By: Hannah Pate



# INTRODUCTION

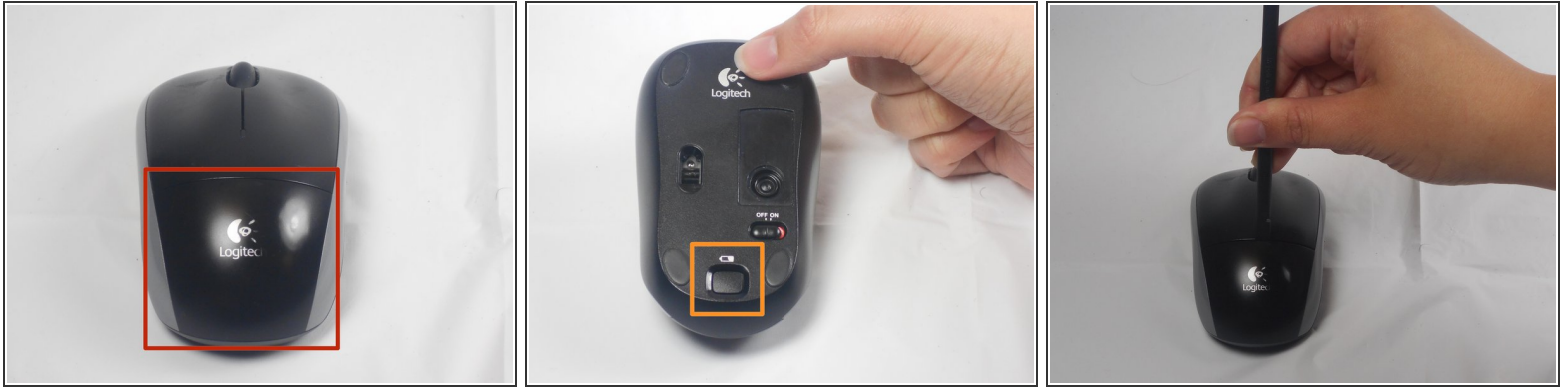
Make sure the power is off and the battery removed before attempting this replacement.



## TOOLS:

- [Phillips #0 Screwdriver](#) (1)
  - [iFixit Opening Picks set of 6](#) (1)
  - [Plastic Cards](#) (1)
-

## Step 1 — Remove the battery cover



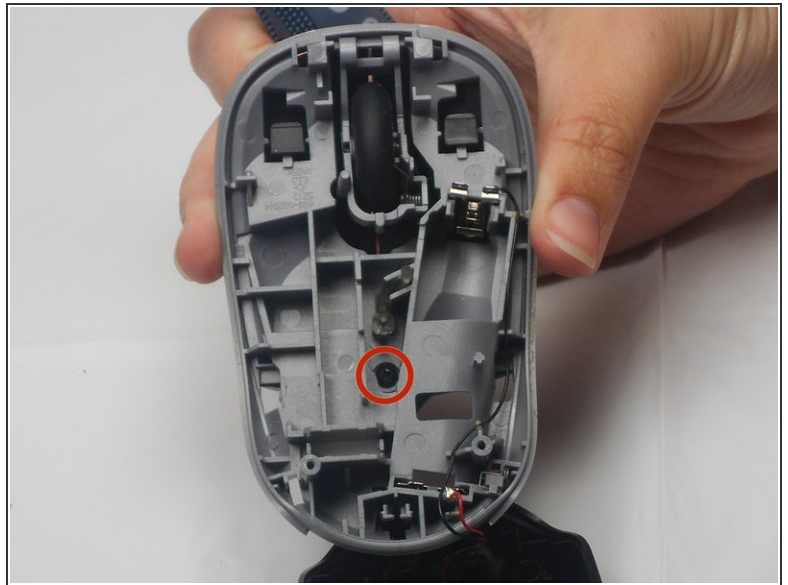
- The battery compartment cover is located on the top of the mouse. The seam running horizontally across the mouse is the top of the cover.
- There is a button to pop off the cover. It is located on the bottom of the mouse. you may need to press hard on this button to pop the cover.
- If the button does not work, you will need to pry off the cover. You can use your fingernails or a prying tool in order to do this, as seen in the third image.

## Step 2 — Remove old battery



- Remember to insert the new battery in the same orientation as the old one. The positive (plus) end should be facing away from the buttons.

## Step 3 — Button Plate



- Use your fingernail to carefully remove the two skid stickers from the fat (non-button) end of the bottom of the mouse to reveal two Philips head screws. Remove these, then unclip the bottom cover. Don't get the sticky dusty. Now remove buttons; they're both attached by one 0.5mm Phillips head screw. It is located in the center of the top cover.

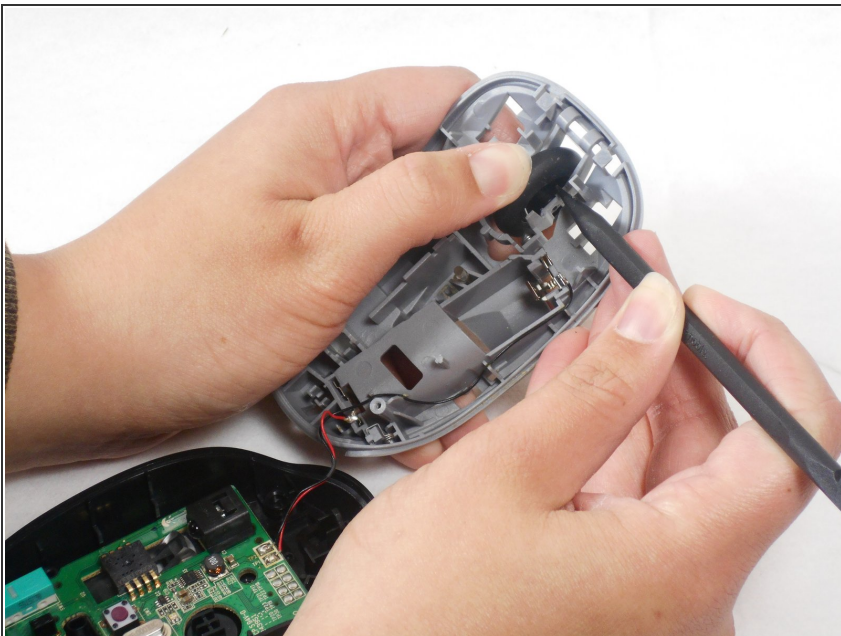


## Step 4 — Pry off buttons



- The button are now only attached by a small overhang near the front. You will need to use the pry tool to push the button plate off of this overhang as shown.
- The button plate should be able to be completely removed at this point.

## Step 5 — Scroll Wheel



- Use the prying tool to remove the scroll wheel. The wheel is held in place by two pegs which stick into the plastic holder.

To reassemble your device, follow these instructions in reverse order.