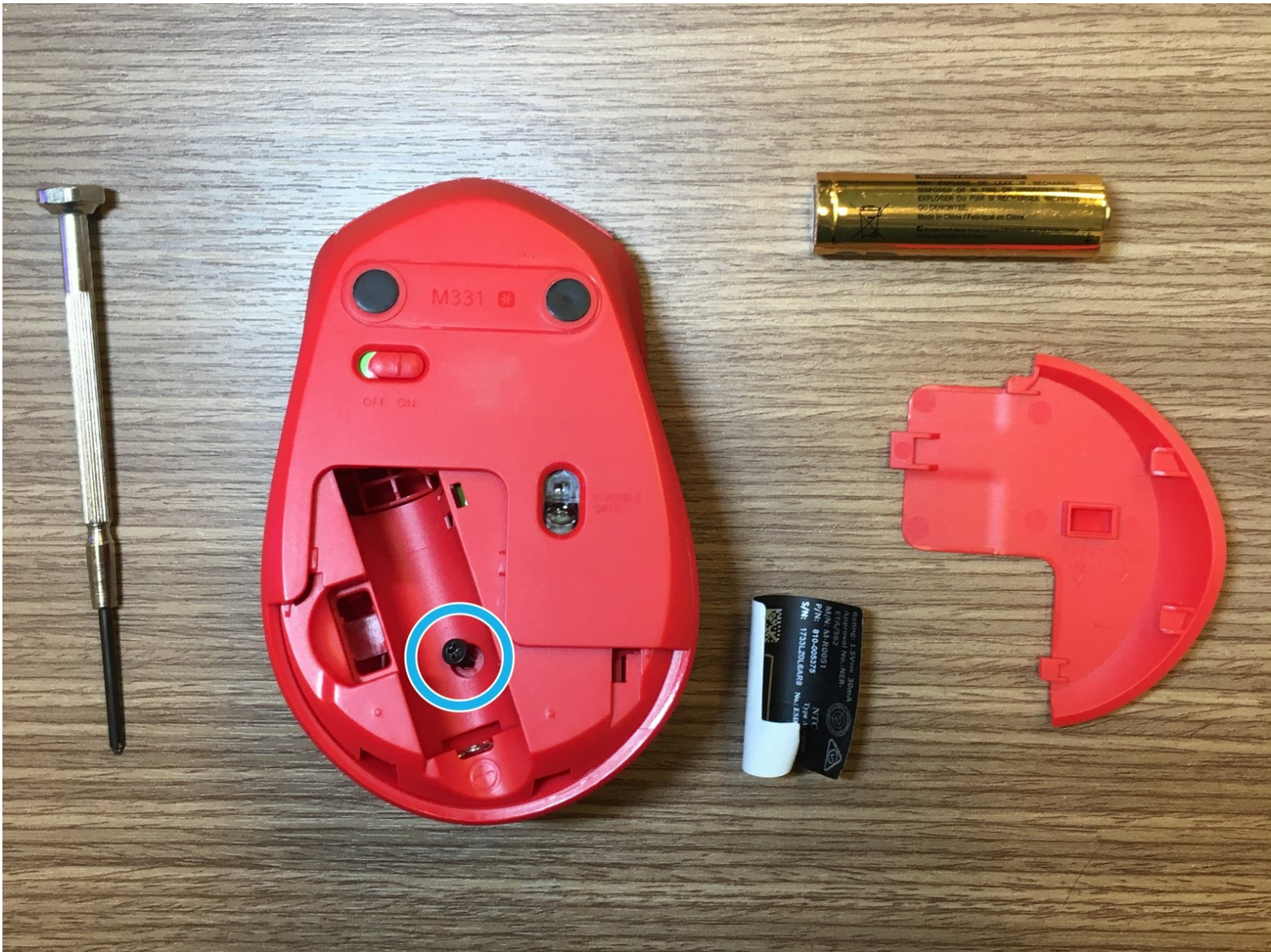




Logitech M331 Disassembly

Written By: garfieldknight



INTRODUCTION

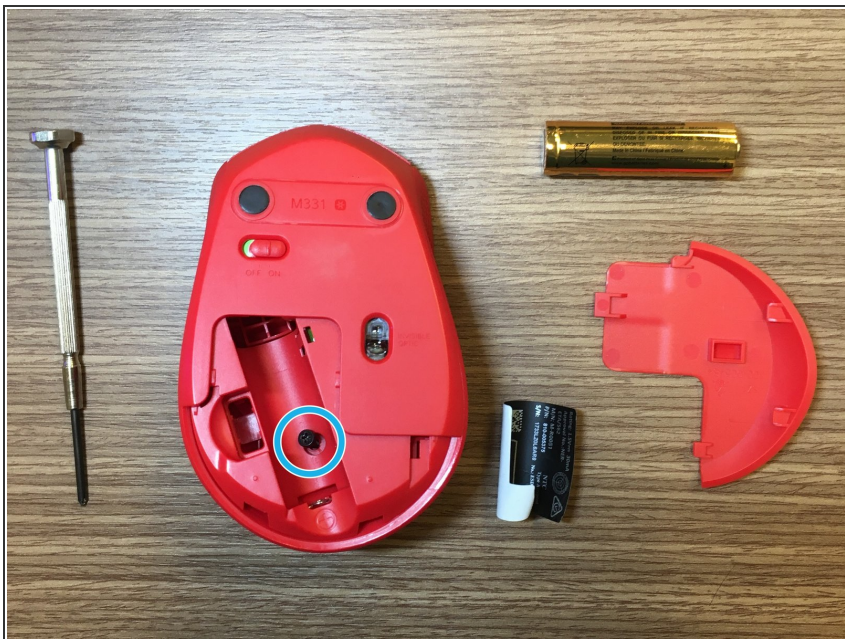
This guide is to help you disassemble Logitech M331/M330 mouse and clean the mouse wheel.



TOOLS:

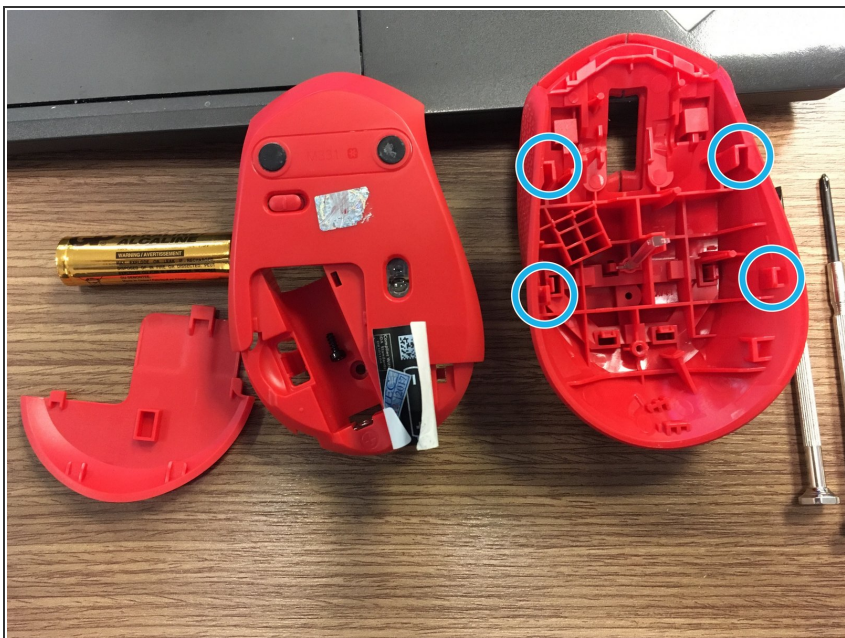
- [Essential Electronics Toolkit](#) (1)
-

Step 1 — Logitech M331 Disassembly



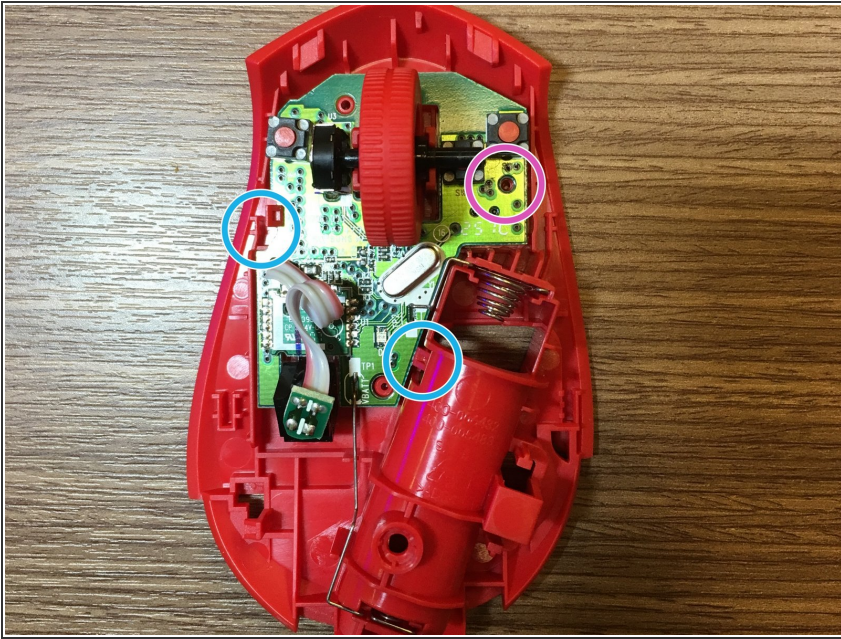
- Carefully detach the upper case and the lower case of the mouse by holding the lower case and lifting the upper case up and then pulling it backward.

Step 2



- Carefully detach the upper case and the lower case of the mouse by holding the lower case and sliding the upper case forward.

Step 3



- Unscrew the screw in the purple circle and unfasten the plastic pins in blue circles to remove the board from the plastic cover.

Step 4



- To disassemble the upper case of the mouse, detach the plastic pins located in the blue circles. The two pins located in purple circles will be automatically unfastened once the four blue pins are detached.
- To disassemble the light propagator, detach the small plastic pin at the bottom of the mouse case and light propagator connection.

To reassemble your device, follow these instructions in reverse order.