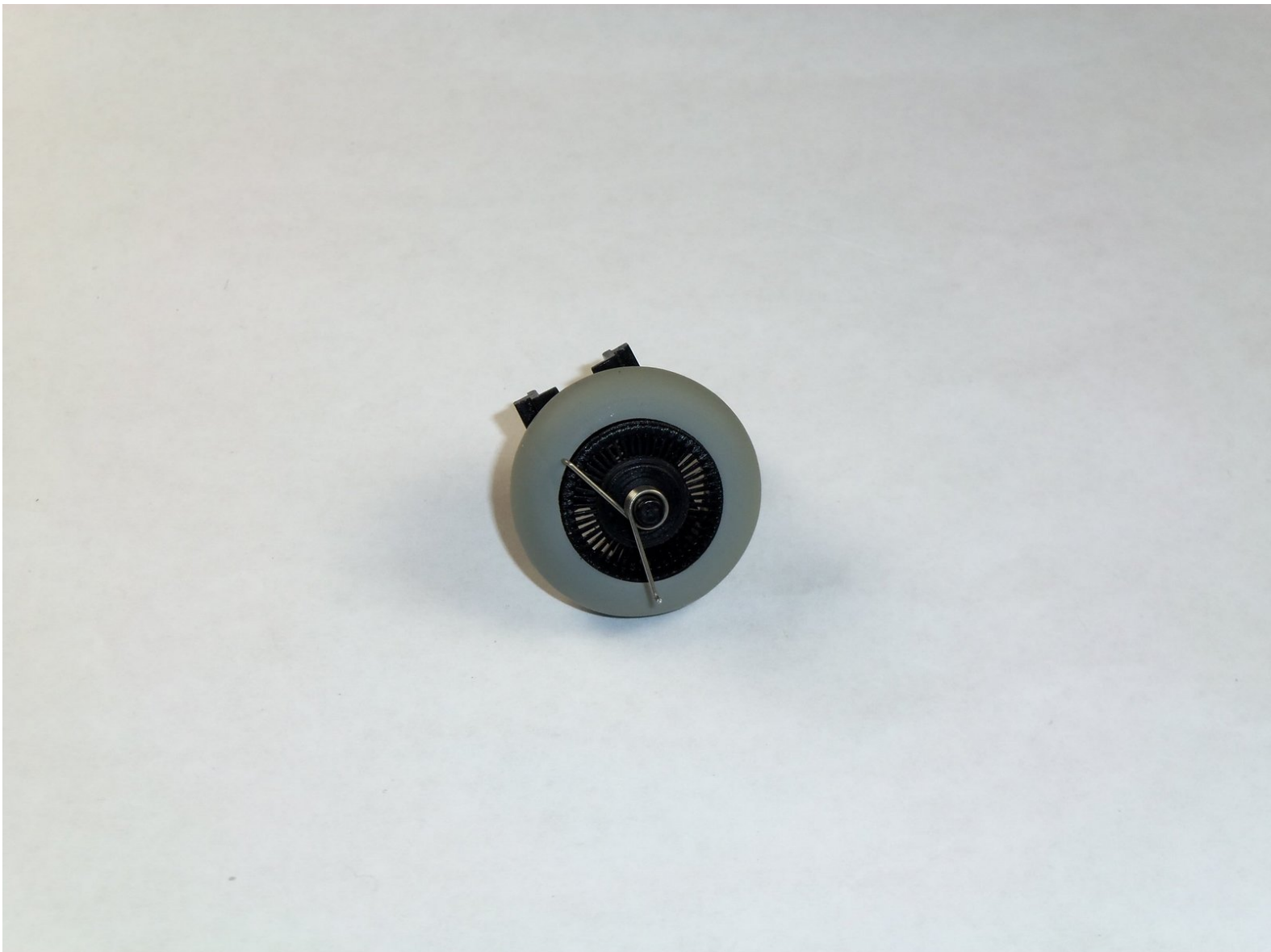




Logitech MBJ58 Mouse Support Spring Replacement

This guide demonstrates how to replace a missing or broken scroll wheel support spring in the Logitech MBJ58 Mouse.

Written By: Conor Whatley



INTRODUCTION

You will learn how to remove and install the support spring.



TOOLS:

- [Phillips #1 Screwdriver](#) (1)
-

Step 1 — Top cover



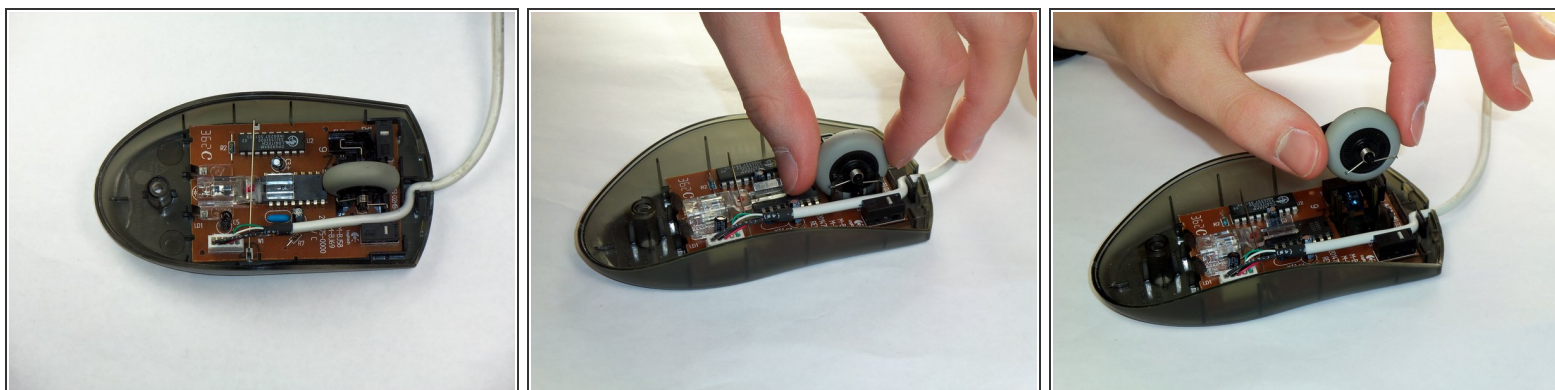
- Hold the mouse so that the bottom is facing up.
- Remove the Phillips #1 screw from the bottom half of the mouse.

Step 2



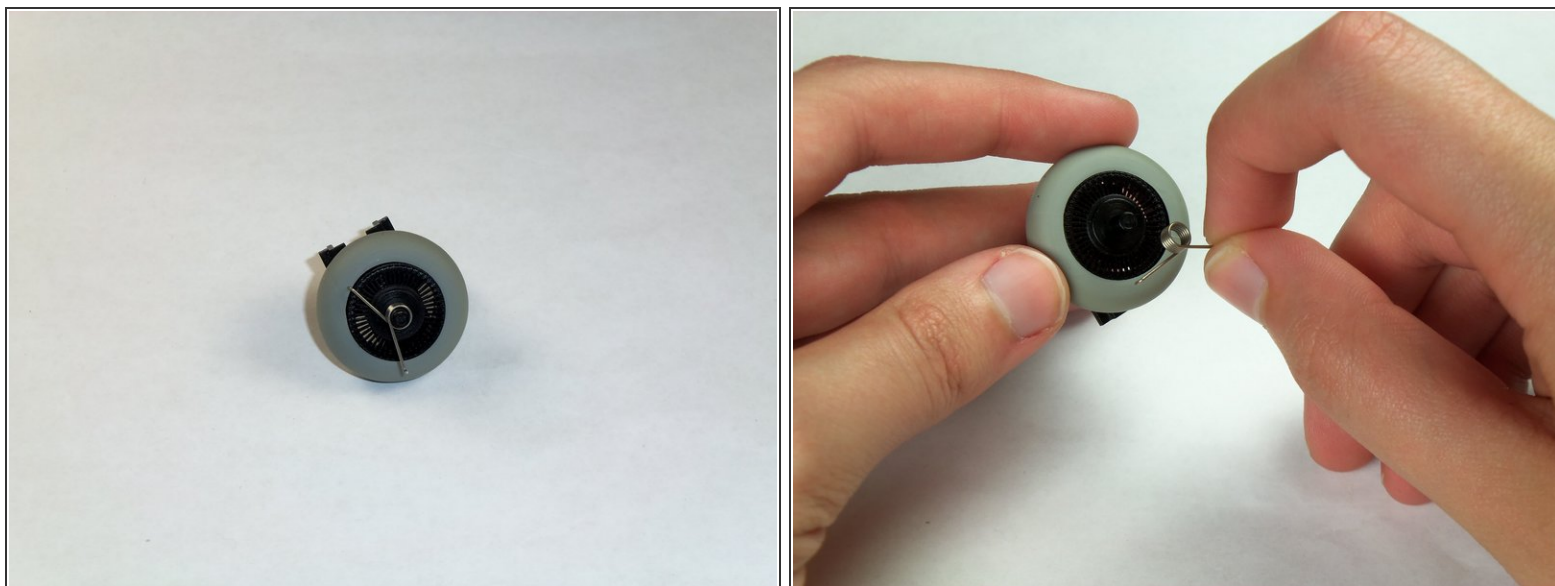
- Place the mouse so that the bottom is resting against a hard surface.
- Gently lift the top cover of the mouse and remove it.

Step 3 — Removing the Logitech MBJ58 Mouse Scroll Wheel



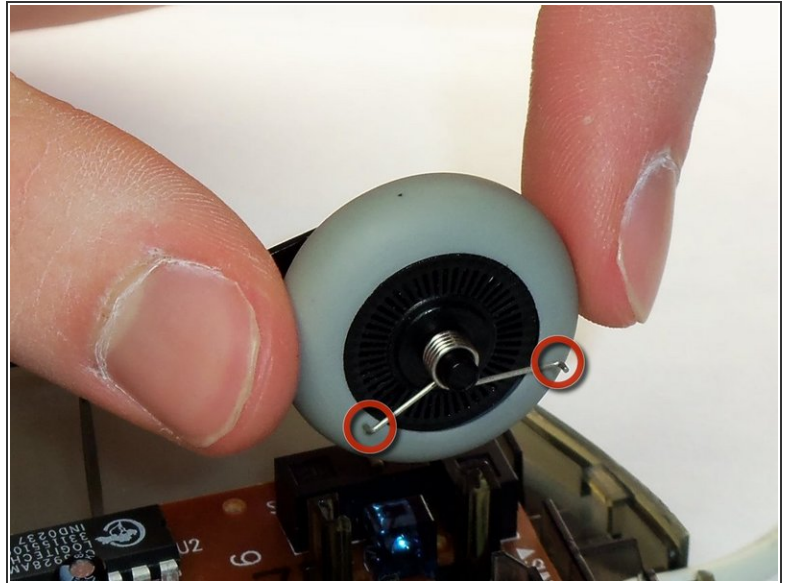
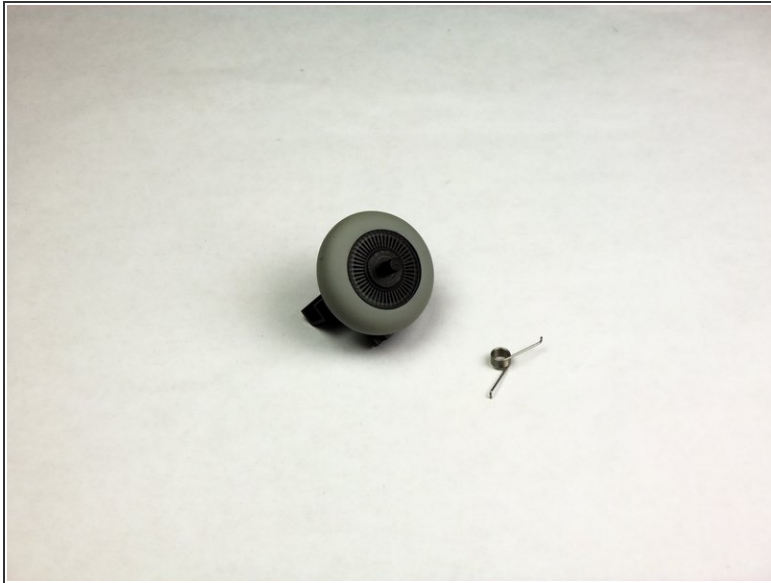
- Locate the scroll wheel on the mouse.
- Grab the scroll wheel with your thumb and index finger.
- Gently lift up, to remove the scroll wheel from the mouse.

Step 4 — Support Spring



- Locate the spring on the scroll wheel, and carefully remove the spring.

Step 5 — Attaching the New Spring



- Place the replacement spring on the correct side of the wheel (shown in the images) with the prongs pointing down.

To reassemble your device, follow these instructions in reverse order.