



Logitech MX Revolution battery Replacement

Logitech MX Revolution has two types of batteries: Li-ion battery L-LY11 (old model) or L-LL11 (new model). You need to disassemble the mouse before purchasing the new battery otherwise you will end up with the wrong battery.

Written By: tommy



INTRODUCTION

This page will guide you to the following steps:

- Removing 4 screws which hold the mouse shield together
- Replacing the Li-ion battery

Also you can watch a video of [Logitech MX Revolution being disassembled](#).

Credit: [BlaisePhoto.fr](#) and [Logi Nu](#)



TOOLS:

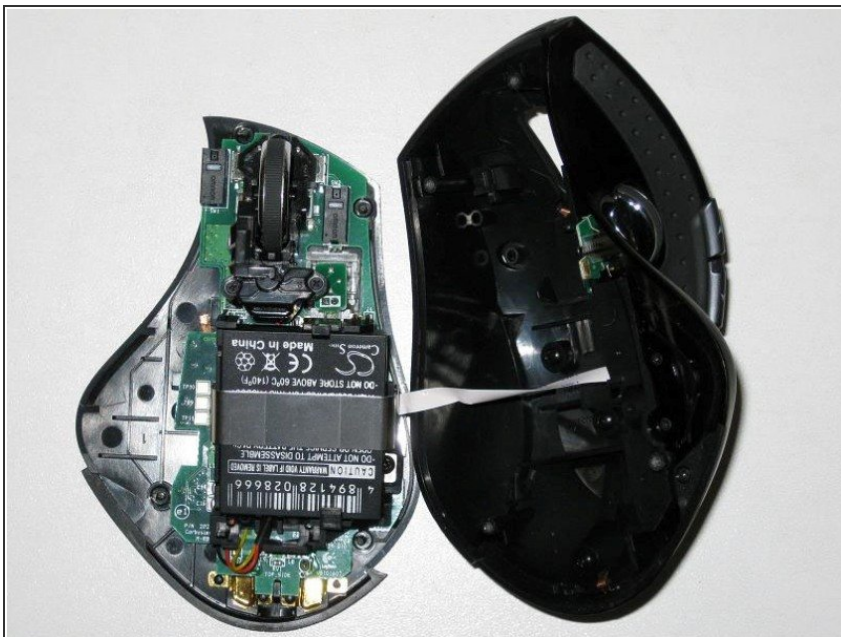
- Flathead 3/32" or 2.5 mm Screwdriver (1)
 - Li-ion battery L-LY11 (old mouse) or L-LL11 (new mouse) (1)
 - Phillips #00 Screwdriver (1)
 - Spudger (1)
-

Step 1 — battery



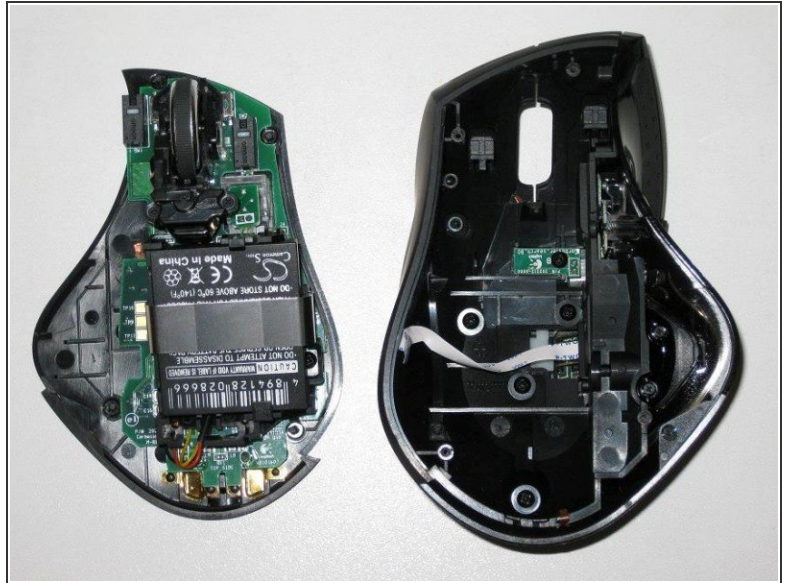
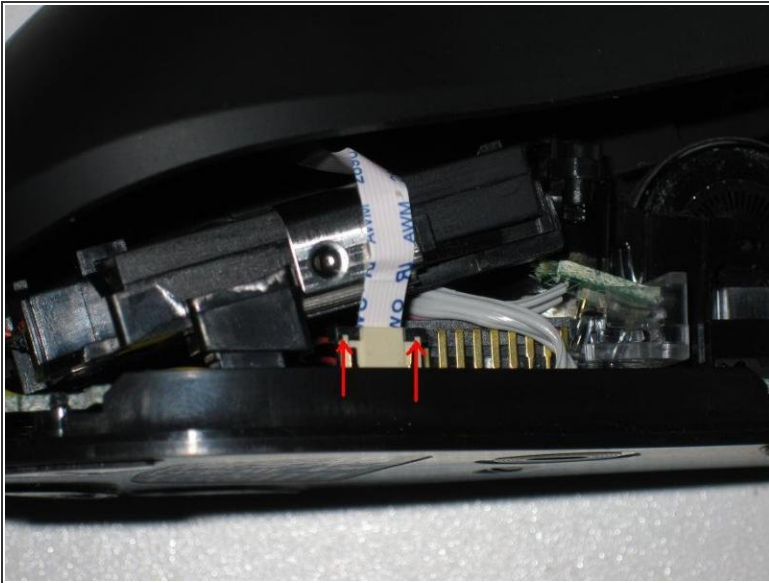
- Remove the mouse feet carefully with a flathead screw driver.
- Also you can buy new mouse feet on ebay if you break them.
- Unscrew each screw a little at a time alternating between all 4 so that the base comes off all at once.

Step 2



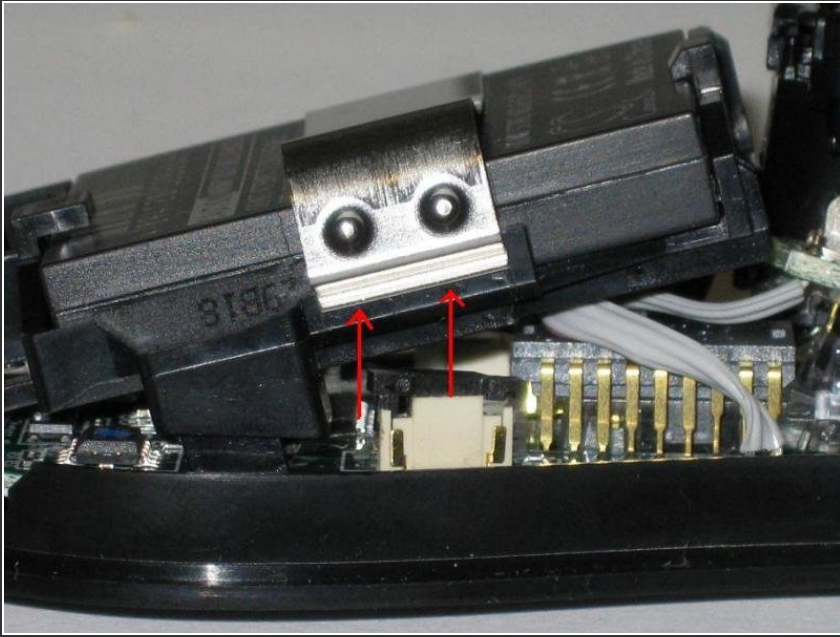
- Gently lift off the top of the mouse as the bottom and top are connected with a ribbon cable.

Step 3



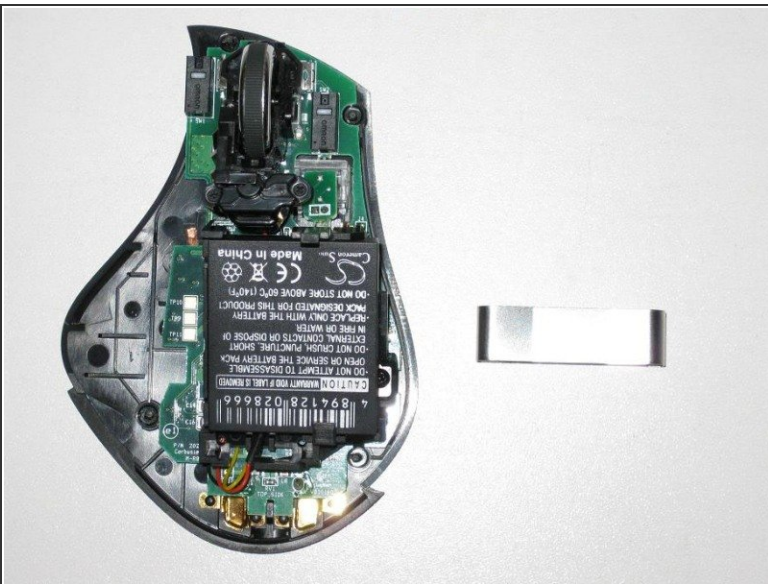
- Remove the ribbon cable GENTLY use your flat head screwdriver to pry up each side of the black clip evenly until the ribbon releases.
- At this point, the mouse shield should be free from the mouse board.
 - If you have an older model mouse, follow steps 4 to 7.
 - If you have a newer model mouse, jump to steps 8.

Step 4



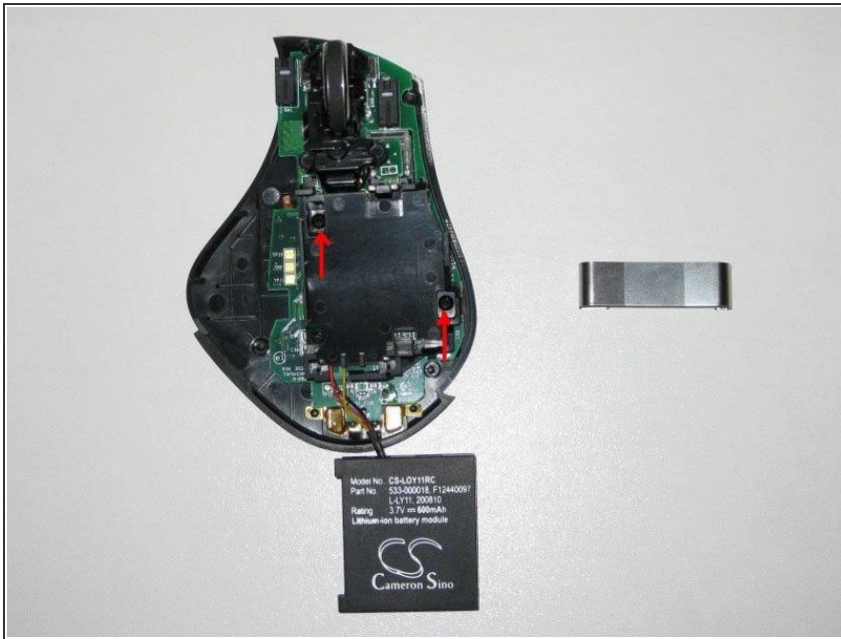
- Remove the battery retainer. Use your flat head screw driver to pry up the metal tab as it is quite flexible.

Step 5



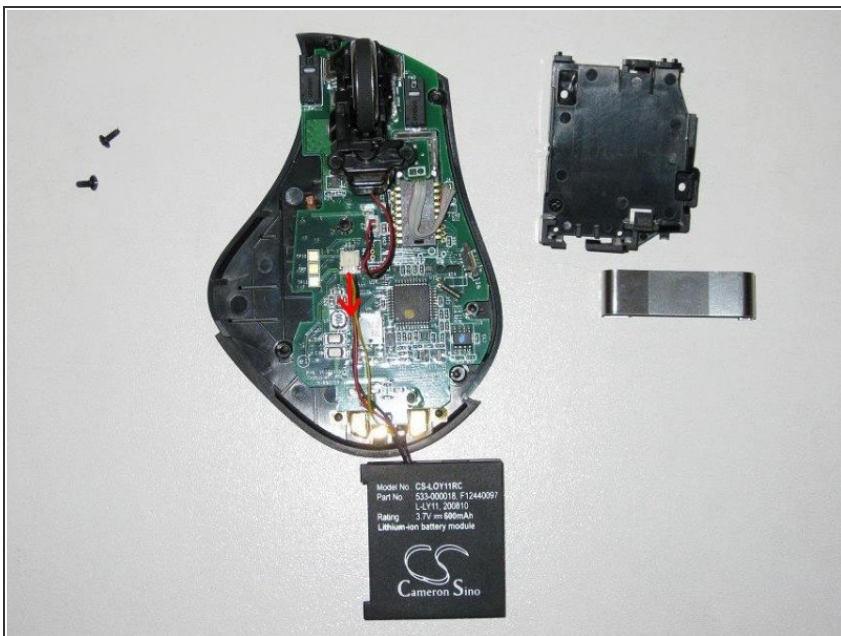
- Remove the battery by pushing the tab forward and lifting the battery at the same time.
- You can see the part number for the battery.

Step 6



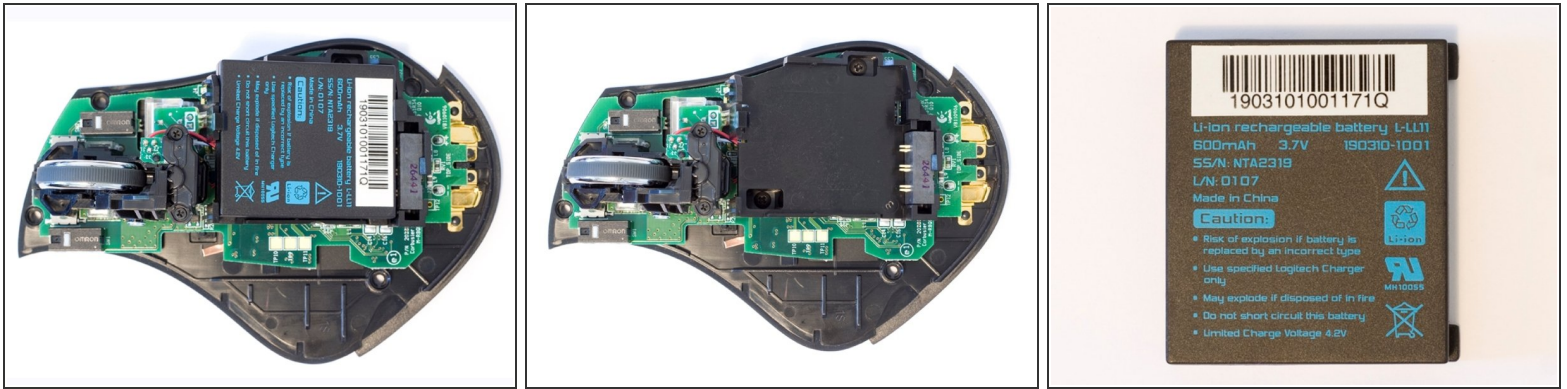
- Remove the battery cage with your Philip's screw driver.

Step 7



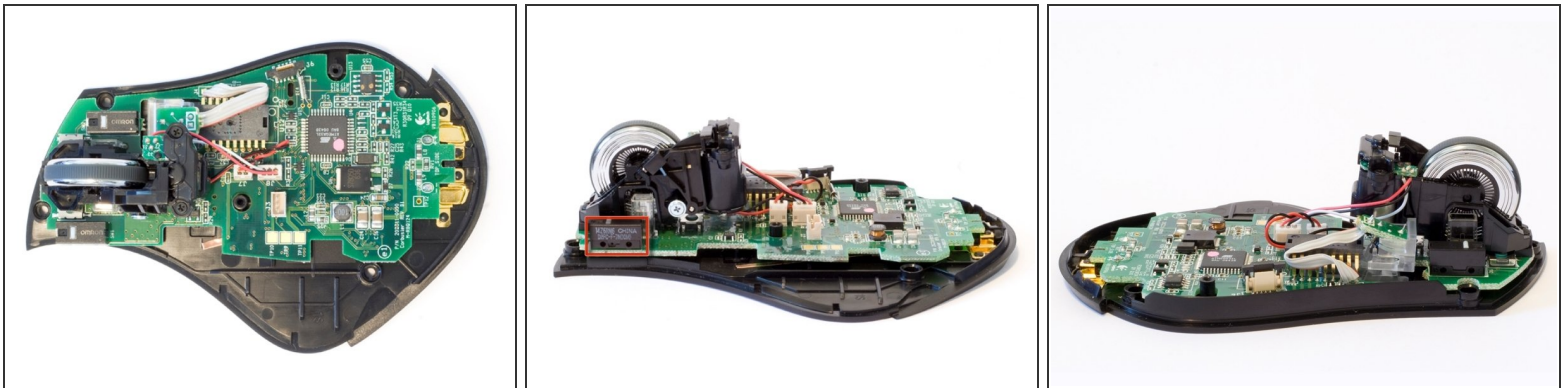
- Using your flat head screwdriver, wiggle the connector until it comes off.
- Insert the new Li-ion battery L-LY11 and you are done.

Step 8



- This step is for the newer model mouse.
- Remove the battery by pushing the tab forward and lifting the battery at the same time.
- Insert the new Li-ion battery L-LL11 and you are done.

Step 9



- Extra pictures from Logitech Revolution MX.
- The mouse use Omron D2FC-F-7N micro switch.

To reassemble your device, follow these instructions in reverse order.