



Logitech MX518 Gaming Mouse Scroll wheel replacement for cleaning

How to disassemble the Logitech MX518 Gaming Mouse for the purpose of cleaning the scroll wheel. A potential fix if you are having issues with unresponsiveness or a sticking wheel.

Written By: Ben



INTRODUCTION

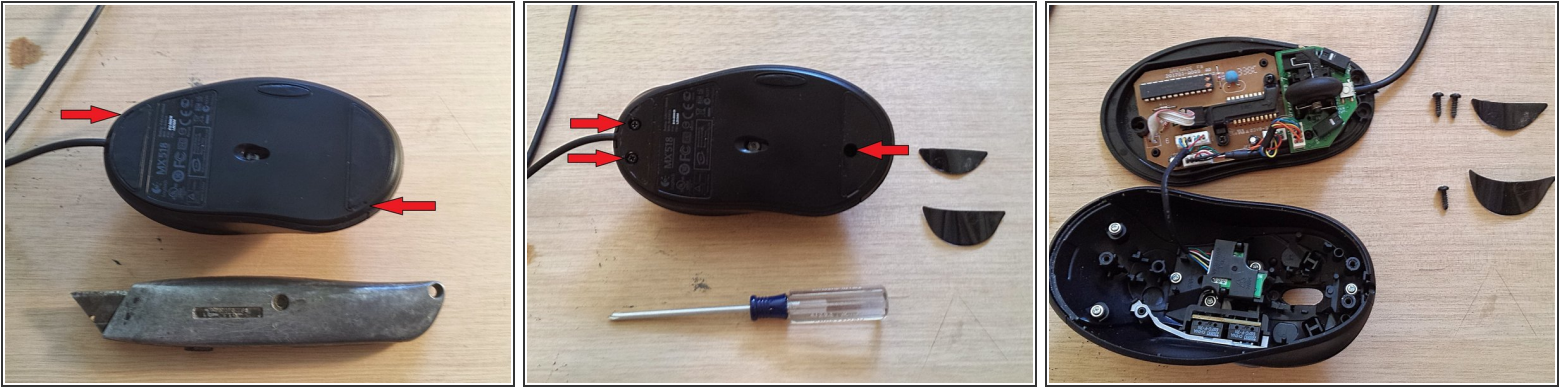
The scroll wheel on this gaming mouse has holes in it that the optical sensor uses to detect when the wheel is turning. If dirt or other foreign material covers the sensor or the holes, the scroll wheel will stop working or may only work intermittently. This guide will demonstrate how to open the mouse and take the wheel assembly apart for cleaning.



TOOLS:

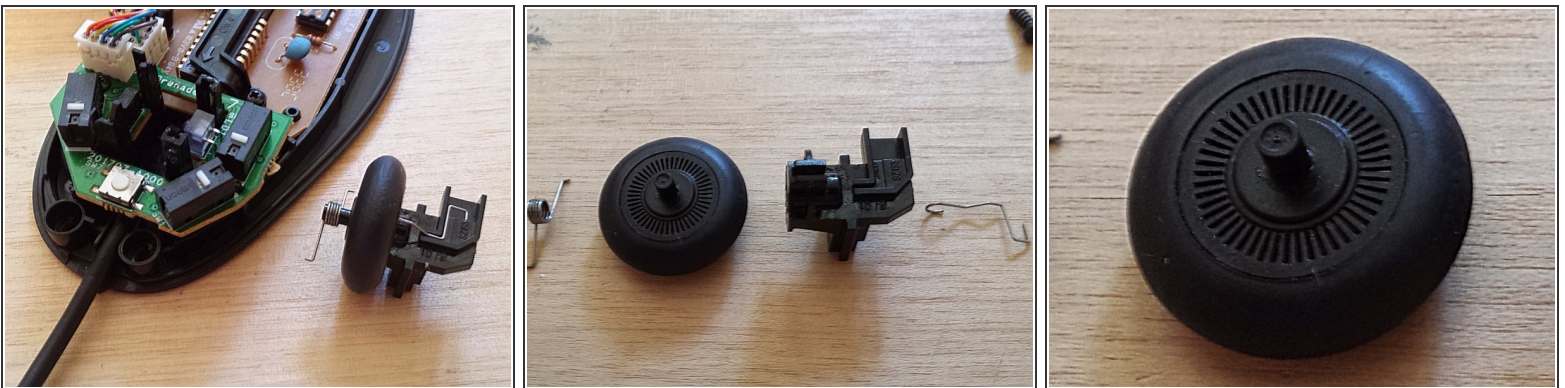
- [Phillips #0 Screwdriver](#) (1)
- [Tweezers](#) (1)
- [Cleaning stuff \(Q-tips and IPA, sandpaper,...\)](#) (1)
- [Compressed Air](#) (1)
- [Utility Knife](#) (1)

Step 1 — Scroll wheel



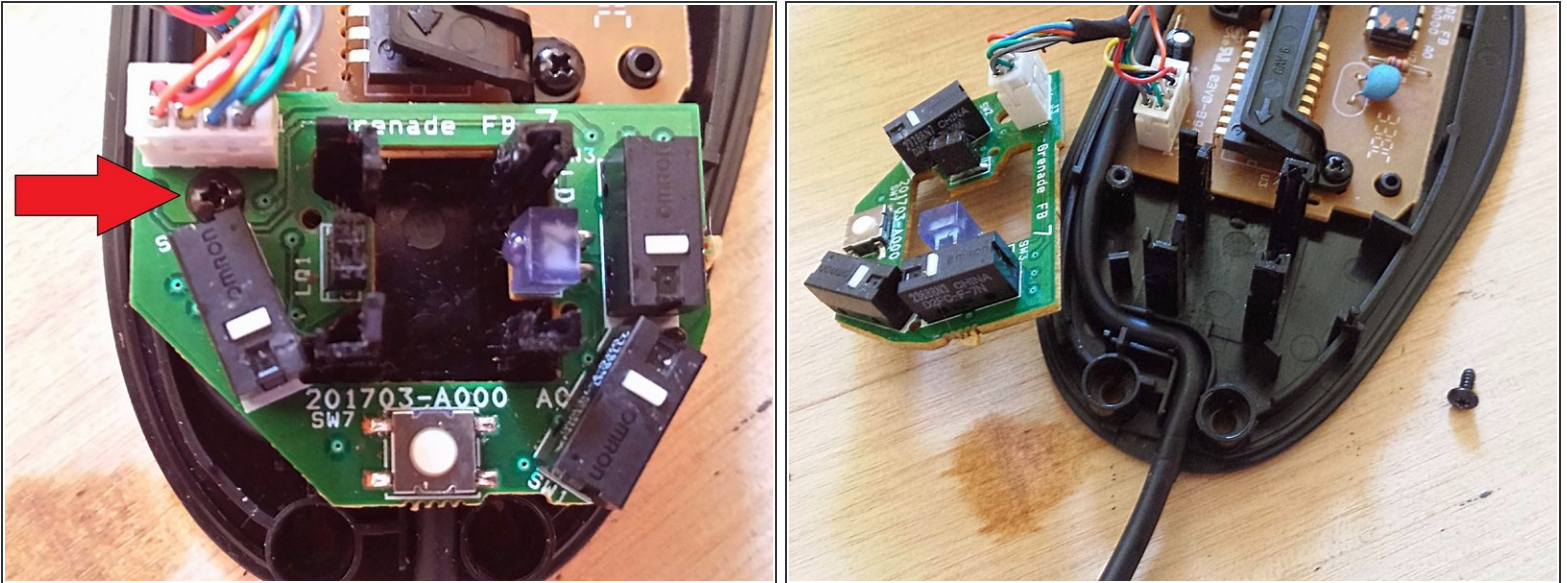
- Use a thin blade to peel up the corners and remove the mouse feet. They re-adhere very well, so be careful to not damage them or get the sticky side dirty.
- Unscrew the three screws that are now visible.
- Gently pull apart the top and bottom halves of the mouse. They will be connected by a wire.

Step 2



- Slide the scroll wheel up and out of the housing.
- Take the scroll wheel assembly apart and clean off any obvious debris.
- Look through each of the holes in the scroll wheel to check for debris that could be obstructing the optical sensor. Use a needle to clean out any obstructions.

Step 3



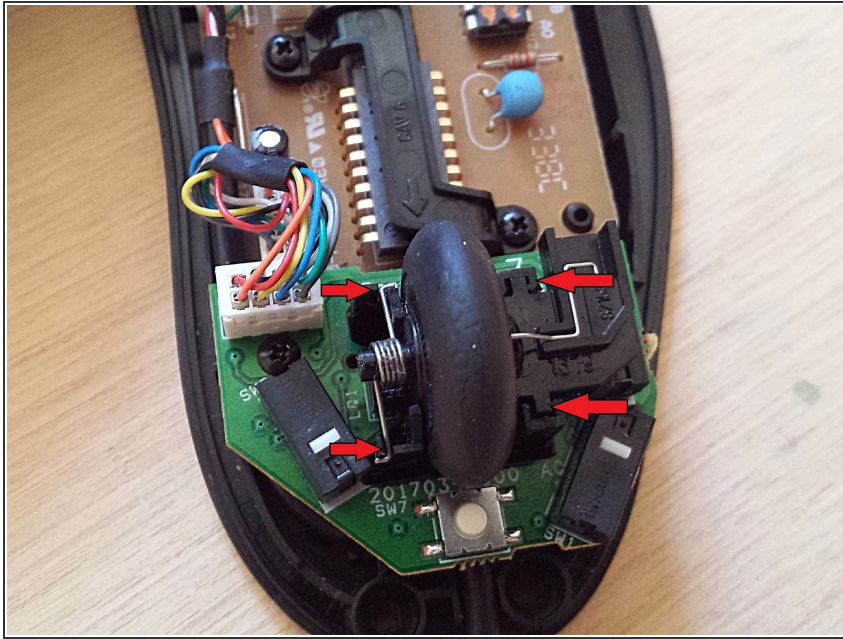
- Optional: If there is any material near the base of the mouse, under the scroll wheel, the sensor chip can be unscrewed and removed.
- Use a gas duster to remove any remaining dust from inside the mouse.

Step 4



- Reassemble the scroll wheel.
- If done correctly, the wheel should click while scrolling. The wheel should not spin freely.
- Optional: Before reinserting the scroll wheel peg, apply lubricant if needed.

Step 5



- Slide the scroll wheel back down into its housing.
- Make sure that the spring is aligned correctly.
- Place the top half of the mouse back on to the bottom half and screw the mouse together.
- Stick the mouse feet back on to their respective locations.

Plug the mouse back in to a computer and test for responsiveness. If the mouse wheel is clean but still does not function, contact Logitech support.