



Logitech Pure-Fi Anywhere 2 Battery Replacement

Replace the battery in your Logitech Pure-Fi Anywhere 2

Written By: EricV



INTRODUCTION

So your Logitech Pure-Fi Anywhere 2 will not recharge it's battery anymore but otherwise still works fine when using the AC adapter? This guide will show you how to replace that faulty battery so that once again you can listen to the music from your trusted iPod without earphones at the beach or wherever.



TOOLS:

- [Phillips #1 Screwdriver](#) (1)
- [iFixit Opening Tools](#) (1)
- [Metal Spudger](#) (1)



PARTS:

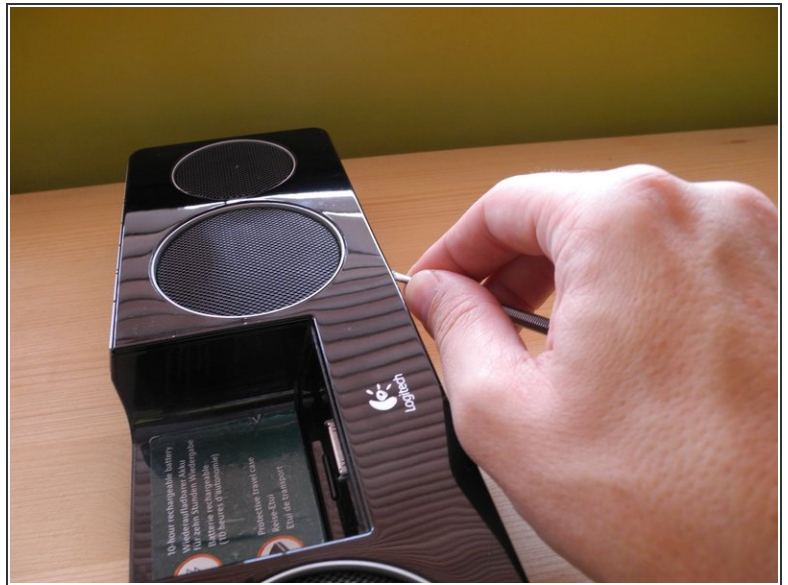
- [nta2479](#) (1)

Step 1 — Loosening cosmetic plastic cover



- To avoid damage to the outside of the casing create a first opening with a plastic opening tool.
- Insert the metal spudger in the opening you just created.

Step 2



- Now work your way along all sides, cutting through the glue with the spudger. The glue is all over so make make sure to go deep enough under the cover with the spudger.

Step 3 — Removing cosmetic cover



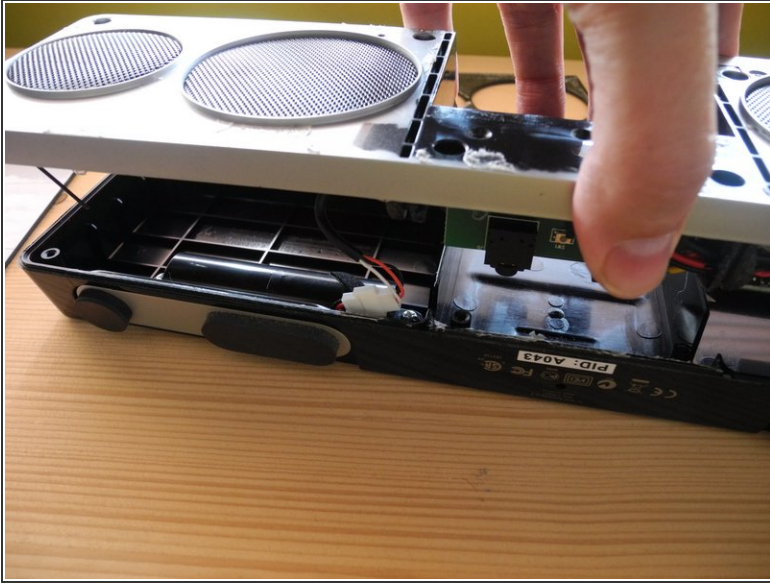
- Remove the plastic cover to get access to the screws.
- *The glue will still stick when reassembling the Pure-Fi Anywhere.*

Step 4 — Unscrew front cover



- Remove the eight Phillips screws securing the front cover to the back cover.

Step 5 — Open the device



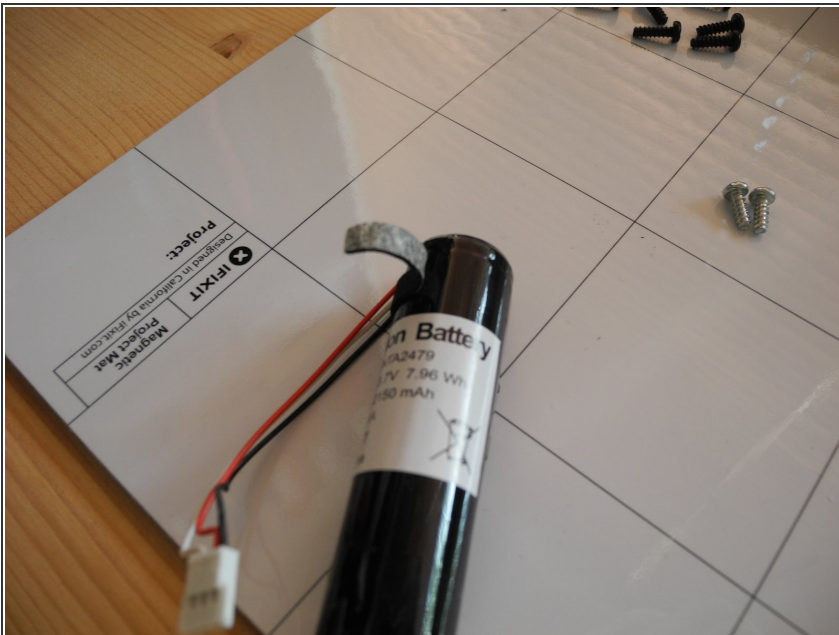
- Lift the front cover up away from the back cover. Do not pull them apart too far though as the battery is secured to the back cover while everything else is secured to the front cover.
- Chances are that the wires running from the battery itself to the connector are firmly tucked behind the battery making it hard to get a grip on the connector so just leave it connected for now.

Step 6 — Remove battery cover



- Remove the two Phillips screws securing the battery cover.
- Remove the battery cover to finally get access to the battery.
- Now you can get a good grip on the battery connector to disconnect it.
- Replace with new battery!

Step 7



- Chances are your replacement battery doesn't have foam tape taped around it. If you don't have a roll of foam tape lying around at home just gently peel off the tape from the old battery and apply it to the new battery. This will ensure that the battery will firmly be secured under the battery cover.

To reassemble your device, follow these instructions in reverse order.