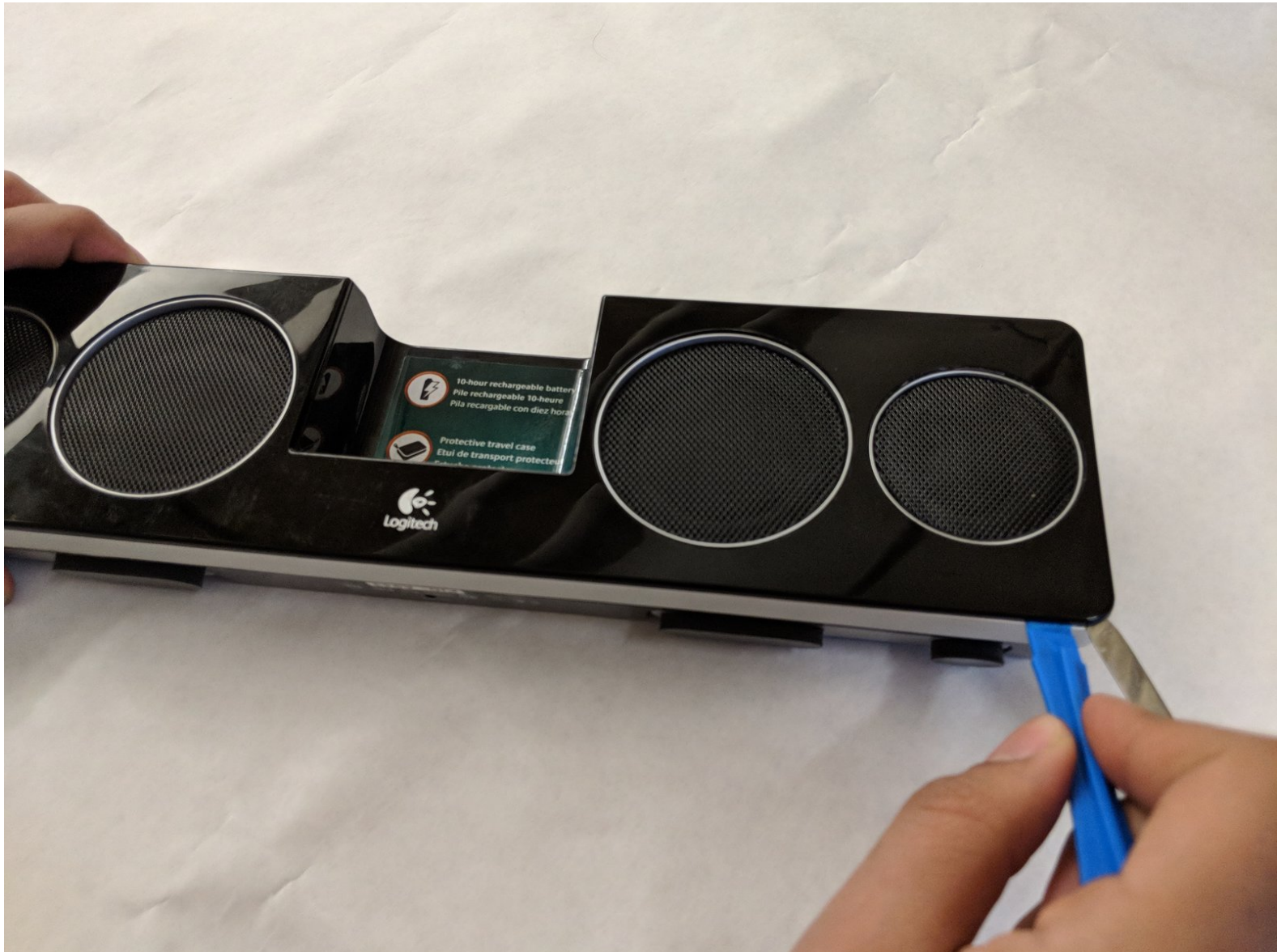




Logitech Pure-Fi Anywhere 2 Dock Adapter Cover Replacement

This guide will show you how to replace the dock adapter cover.

Written By: ali alhashim





TOOLS:

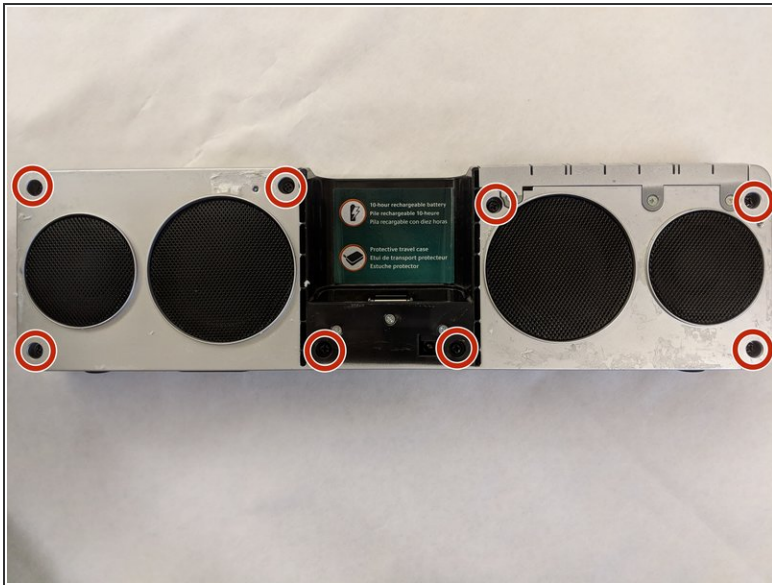
- [54 Bit Driver Kit](#) (1)
- [Metal Spudger](#) (1)
- [iFixit Opening Tools](#) (1)

Step 1 — Dock Adapter Cover



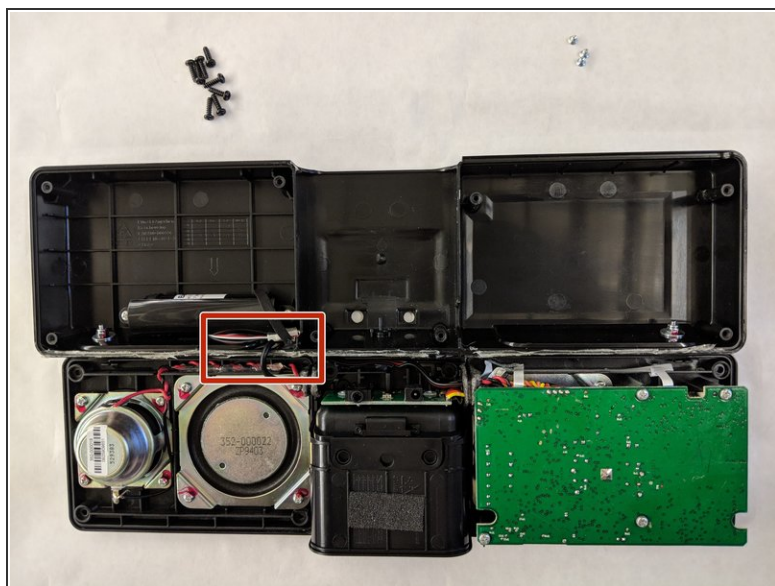
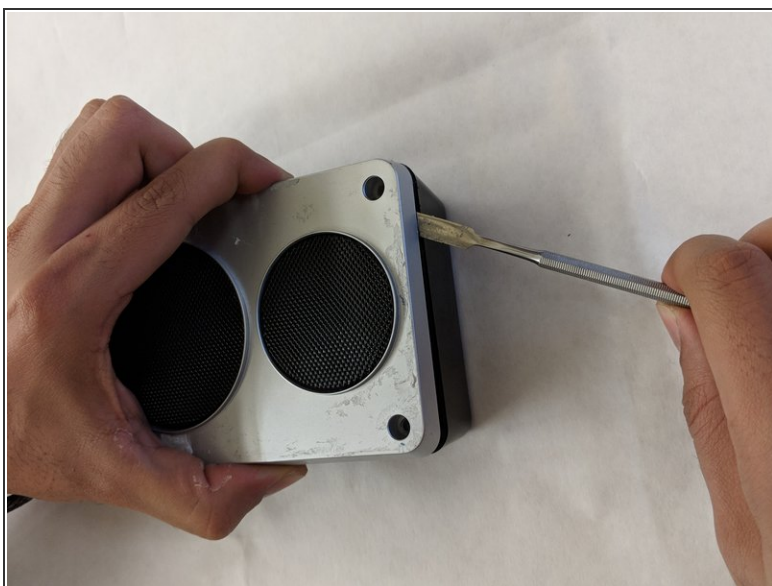
- To remove the plastic cover, use the plastic opening tool at the corner of the device.
- Then insert the metal spudger in the opening and slowly move the metal spudger along all sides of the cover.
 - ⚠ **Caution:** Metal spudger can damage the internal components of the device such as the motherboard. Make sure to use the metal spudger carefully to avoid any unnecessary damages.
- Make sure the metal spudger is inserted deep enough as the cover is glued to the device.
 - ⚠ **Caution:** Carefully remove the cover as it is easy to break.

Step 2



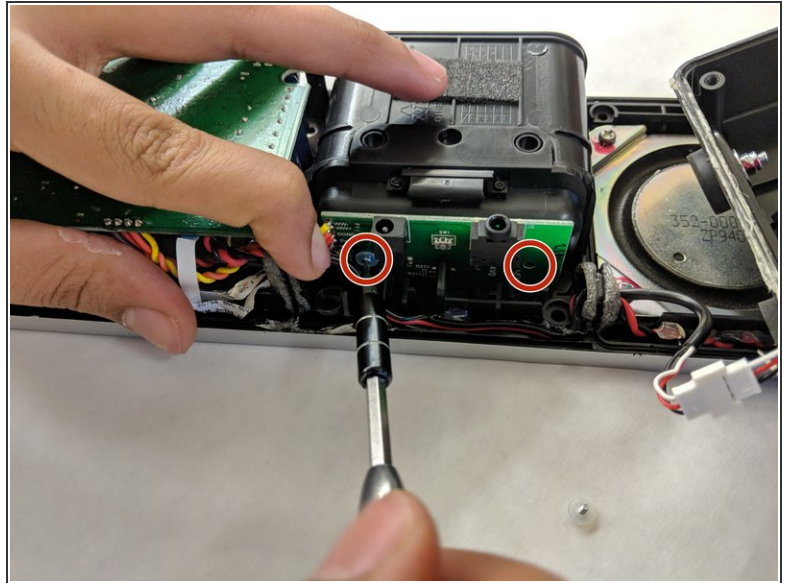
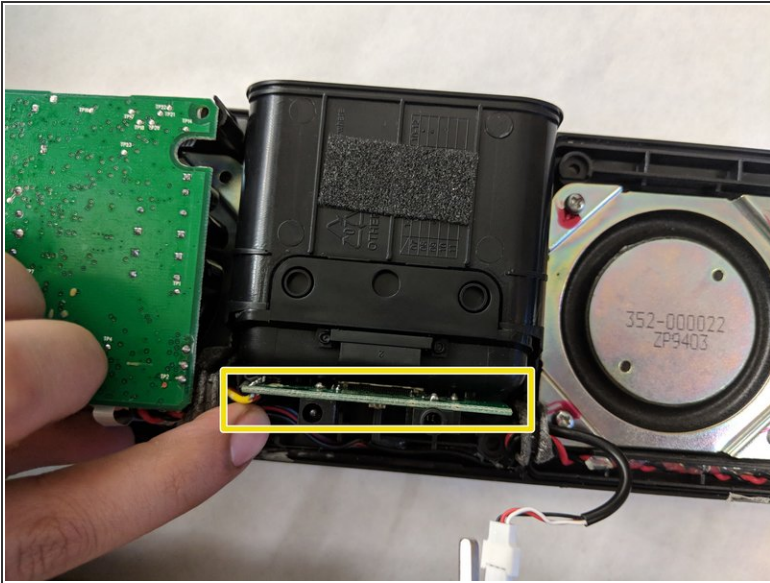
- Remove the eight 10.5 mm Phillips #1 screws securing the cover.
- Remove three 5.2 mm Philips #1 screws securing the dock.

Step 3



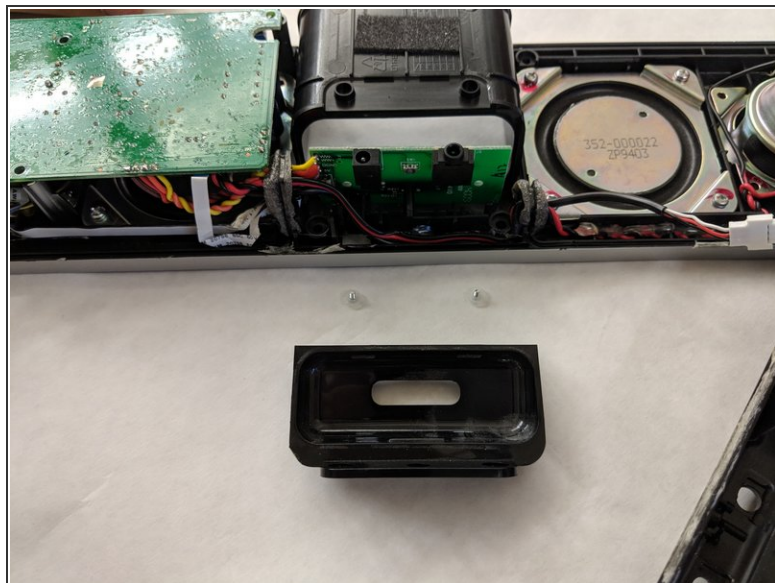
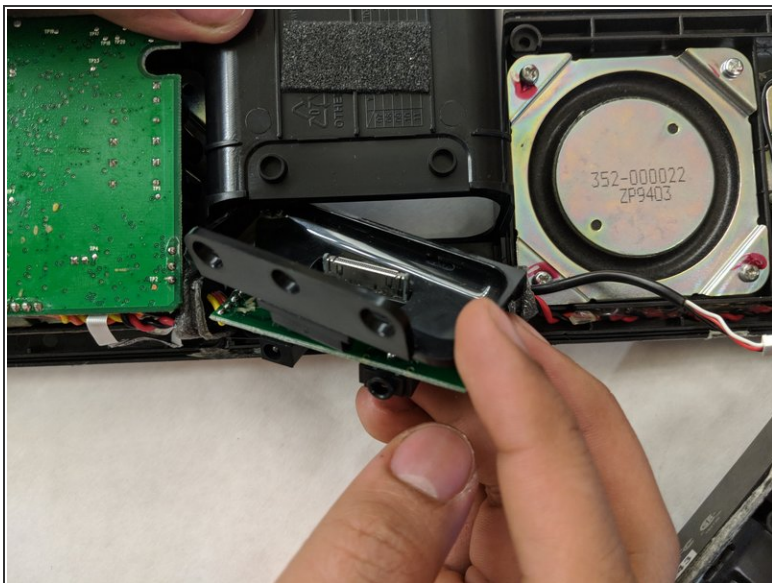
- Use the metal spudger to loosen the front cover to get into the inner part of the device.
 - ⚠ Metal spudger can damage the internal components of the device such as the motherboard. Make sure to use the metal spudger carefully to avoid any unnecessary damages.
- Make sure to carefully lift up the front cover from the back cover.
 - ⓘ There are wires connecting to between battery and the cover.

Step 4



- Identify the small circuit board attached to the dock adapter cover.
- remove two 2.5 mm Phillips #1 screws at the circuit board.

Step 5



- Carefully take out the dock adapter cover from the device.
- ⓘ It might need a few tries to pull out the small circuit board.
- Take out the broken dock adapter cover and replace with the new one.

To reassemble your device, follow these instructions in reverse order.