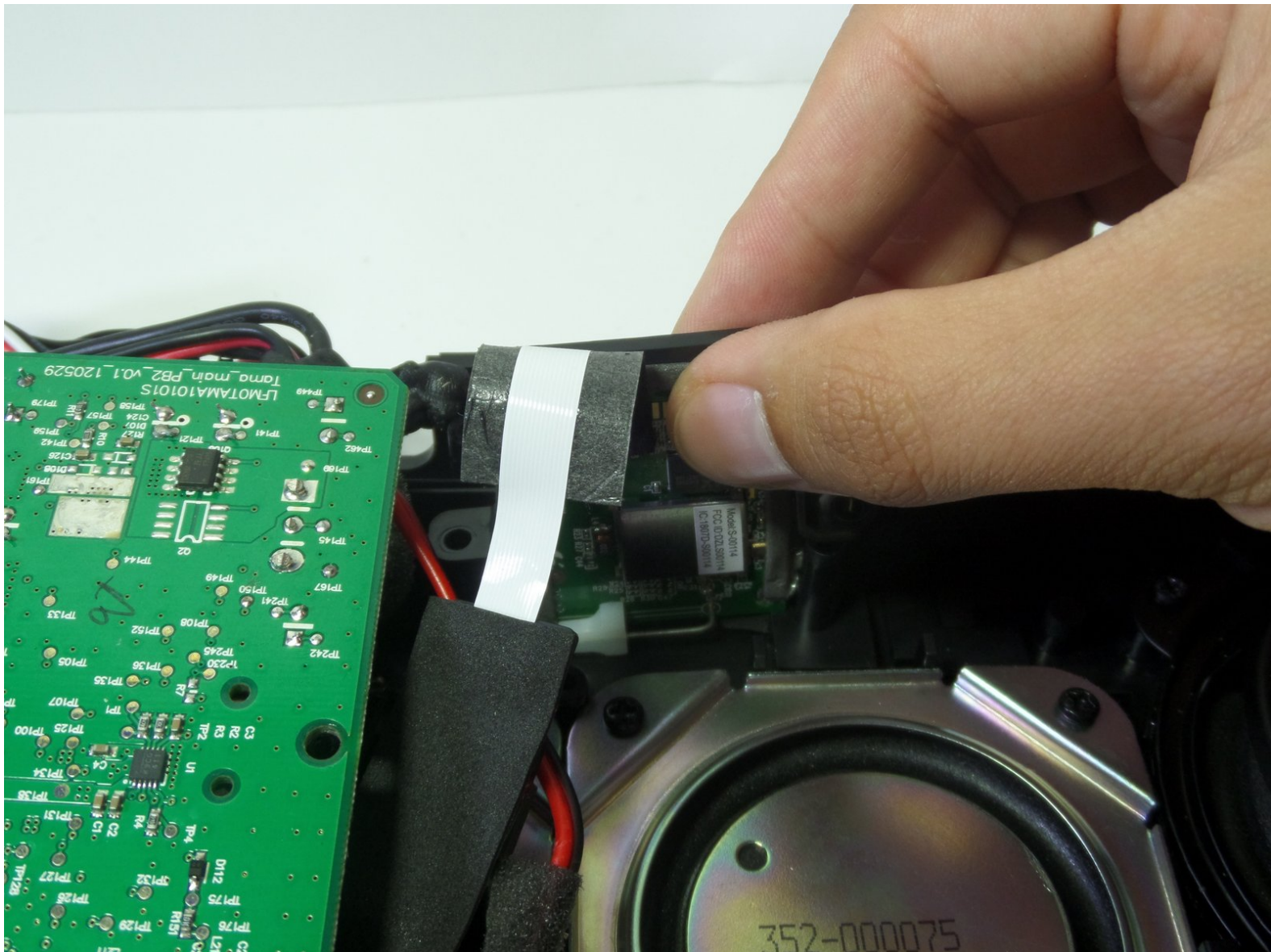




Logitech UE Boombox Bluetooth Adapter Replacement

This guide will show you how to replace the Bluetooth adapter in the Logitech UE Boombox.

Written By: teresa ahmadyar



INTRODUCTION

This guide will show you how to replace the Bluetooth adapter in the Logitech UE Boombox.



TOOLS:

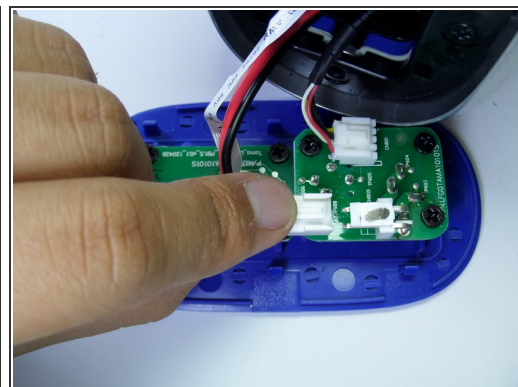
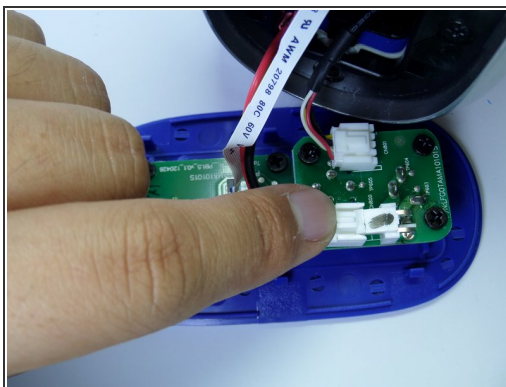
- [Metal Spudger](#) (1)
 - [Phillips #2 Screwdriver](#) (1)
-

Step 1 — Speaker Grille



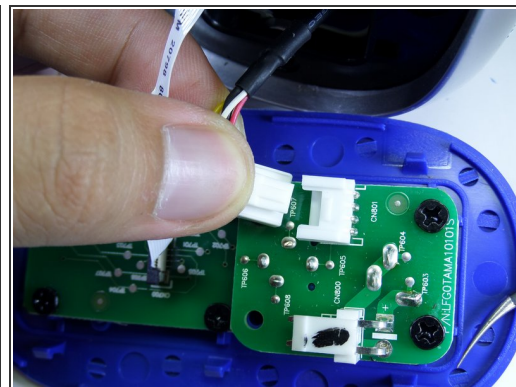
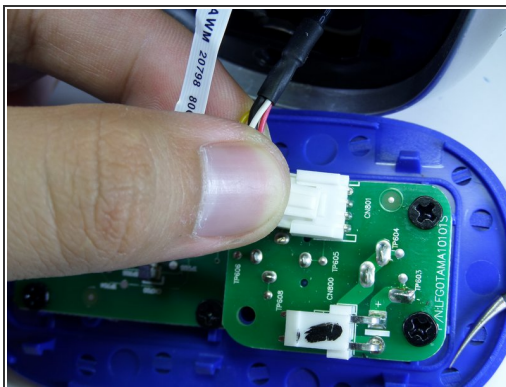
- Use a metal spudger to pry open the power button cover.
- Once the power button cover is slightly opened, use your fingers to remove the power button cover.

Step 2



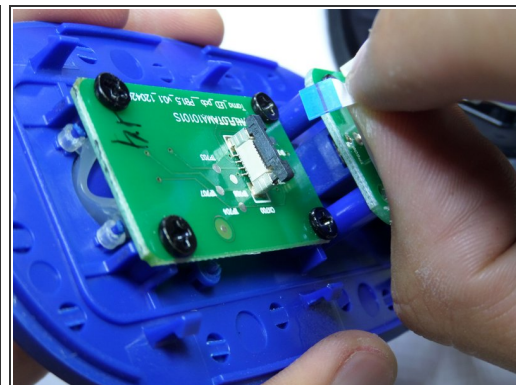
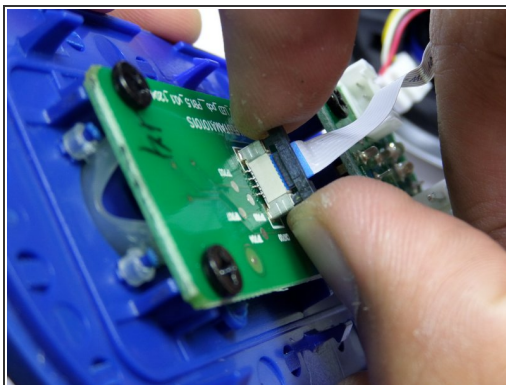
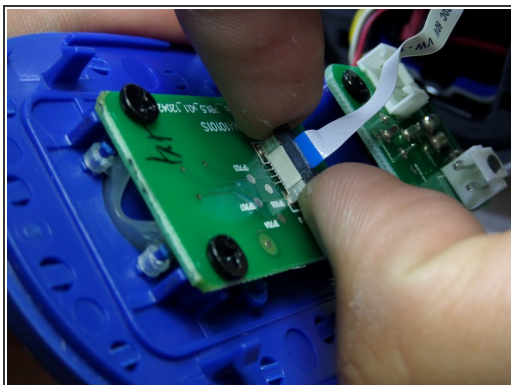
- Press firmly on the end of the latch and pull the two-wire connector away from the base to separate.

Step 3



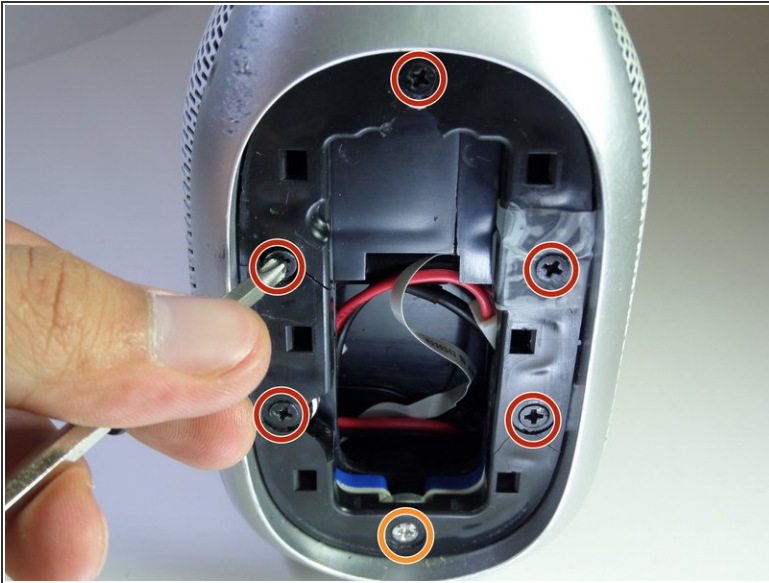
- Firmly press on the end of the latch and pull the four-wire connector away from the base to separate.

Step 4



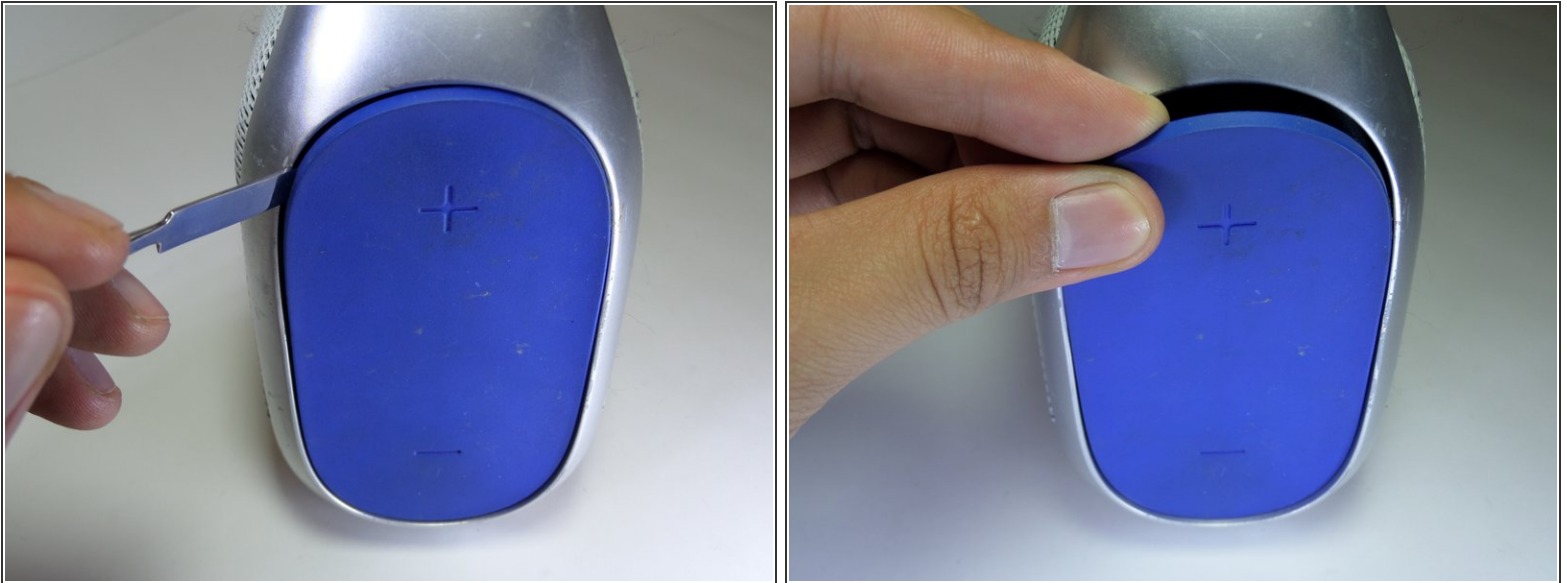
- Lightly, pry up on each side of the black band connector lock using your fingertips.
- Once unlocked, pull straight up on the connector to remove.

Step 5



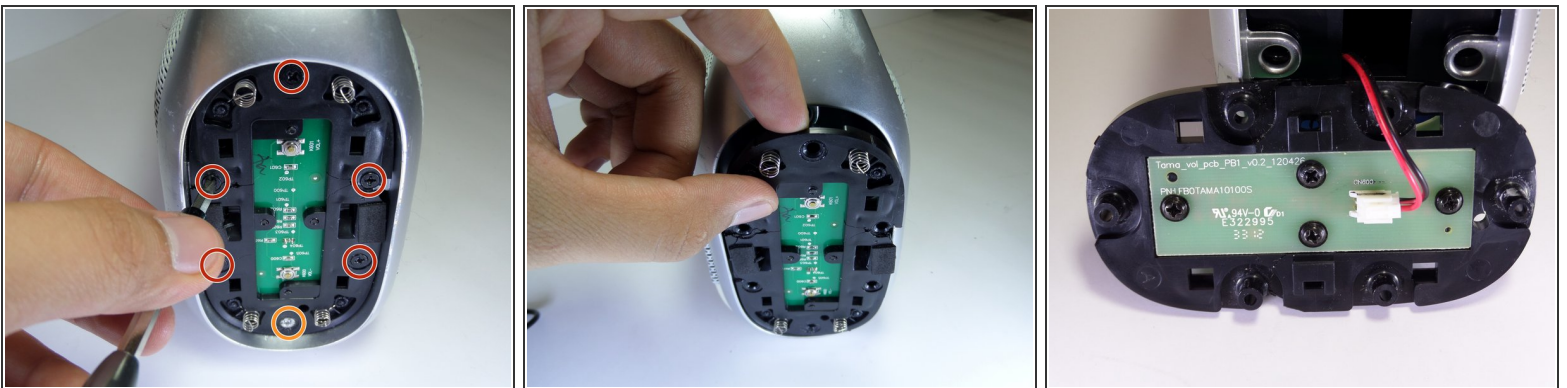
- Remove the five black 14mm Phillips #2 screws from the black plastic side panel.
- Remove the one silver 16mm Phillips #2 screws from the black plastic side panel.
- Remove the black plastic screw panel from the boombox.

Step 6



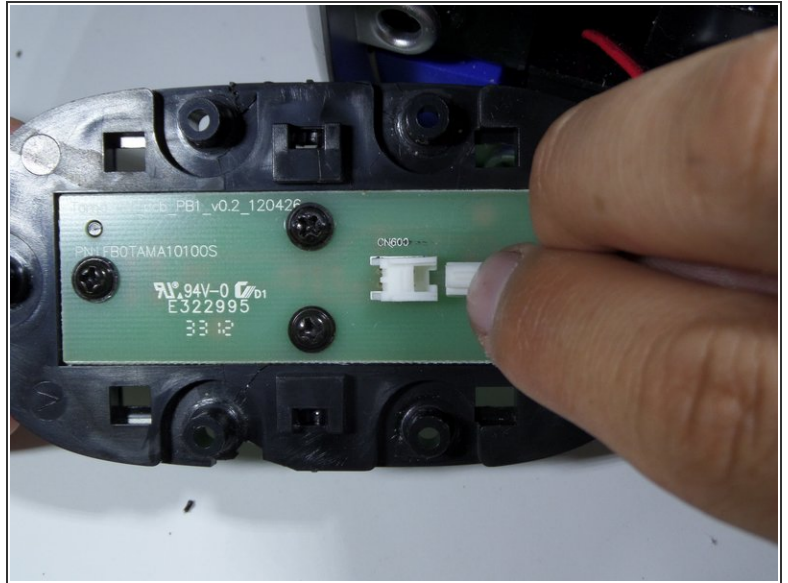
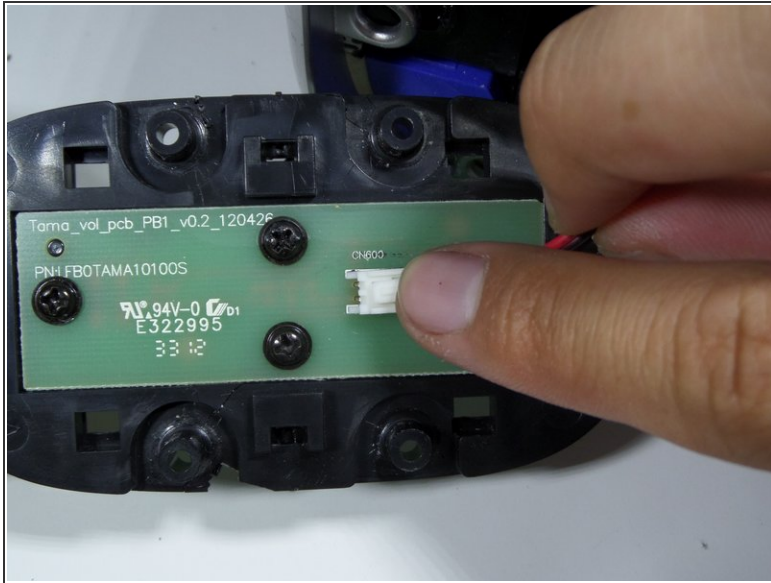
- On the opposite side of the device, pry open the volume rocker with a metal spudger.
- Remove the panel with your fingers once the volume rocker is slightly opened.

Step 7



- Remove the five black 14mm Phillips #2 screws from the black plastic side panel.
- Remove the one silver 16 mm Phillips #2 screw from the black plastic side panel.
- Once all screws are removed, take the screw panel out of the device to gain access to the back of the panel.

Step 8



- Firmly press on the end of the latch and pull the two-wire connector away from the base.

Step 9



- Pull up on the aluminum boombox handle to remove.

Step 10



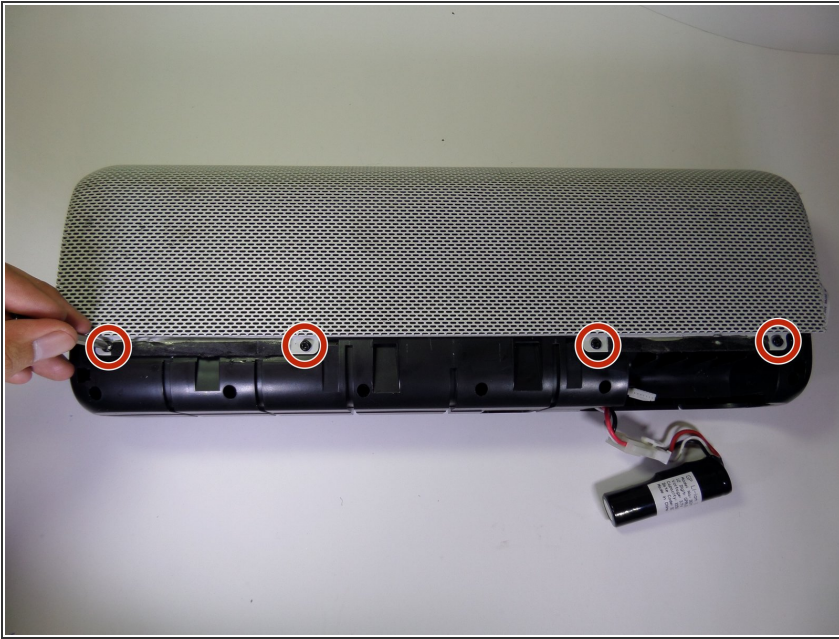
- Use a metal spudger to pry the rubber base apart from the aluminum grille.

Step 11



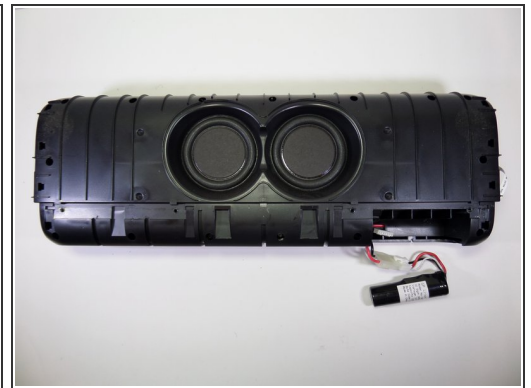
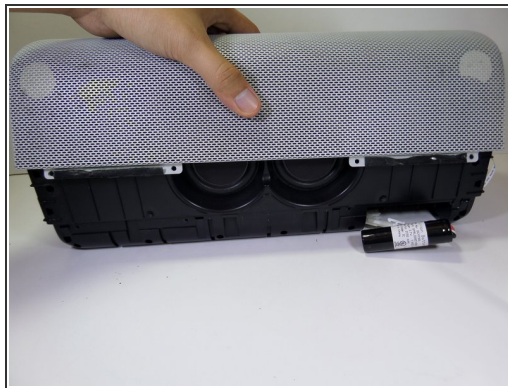
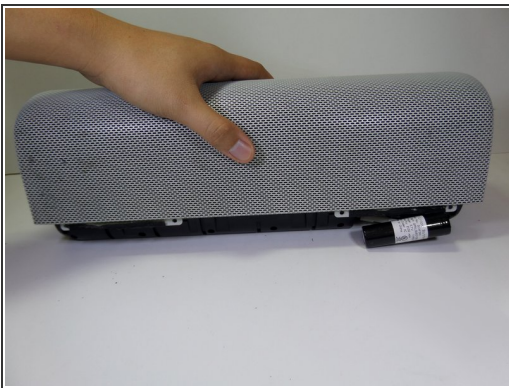
- Pull the rubber base away from the boombox.

Step 12



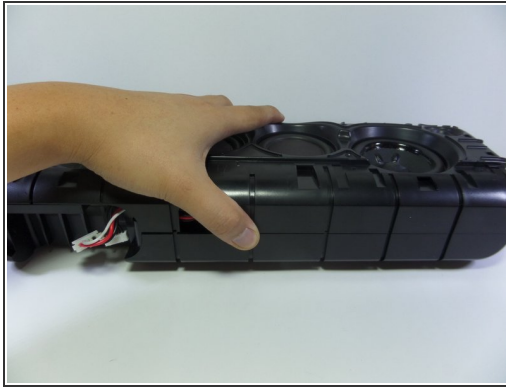
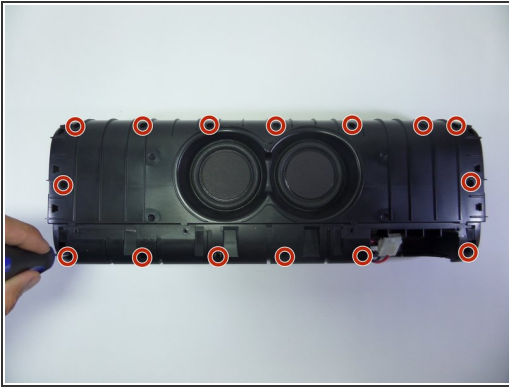
- Remove the four black 7.5mm Phillips #2 screws on each side of the device.
- ⓘ There should be a total of eight screws removed in this step.

Step 13



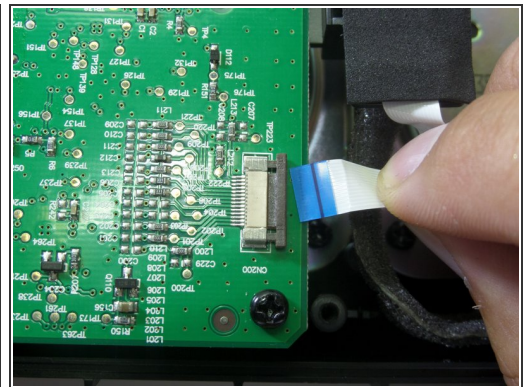
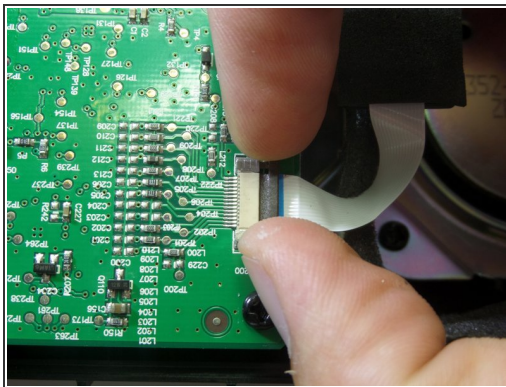
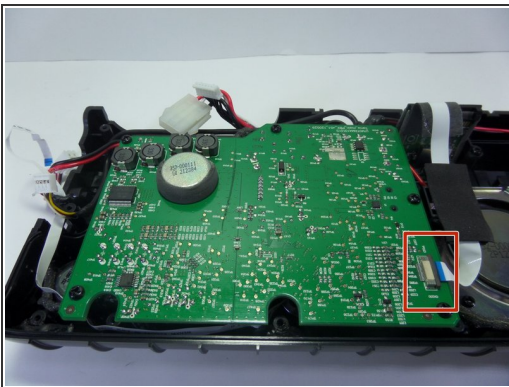
- Pull vertically on the speaker grille to remove it from the boombox.

Step 14 — Bluetooth Adapter



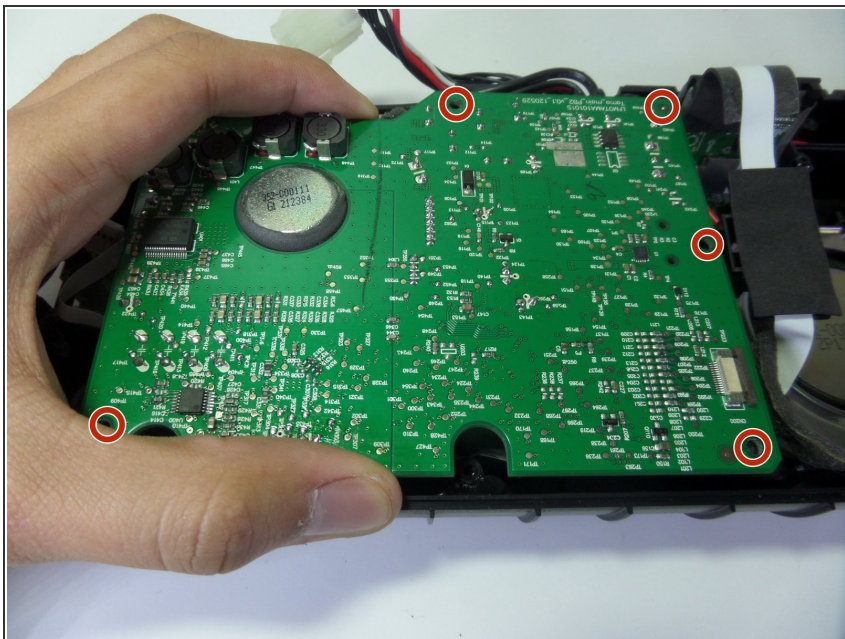
- Remove the fifteen 13.0mm Phillips #2 screws from the side of the device containing two speakers.
 - Separate the two halves by gently pulling them apart.
- i** The screws at this step are embedded deep within the device so make sure your screwdriver is long.

Step 15



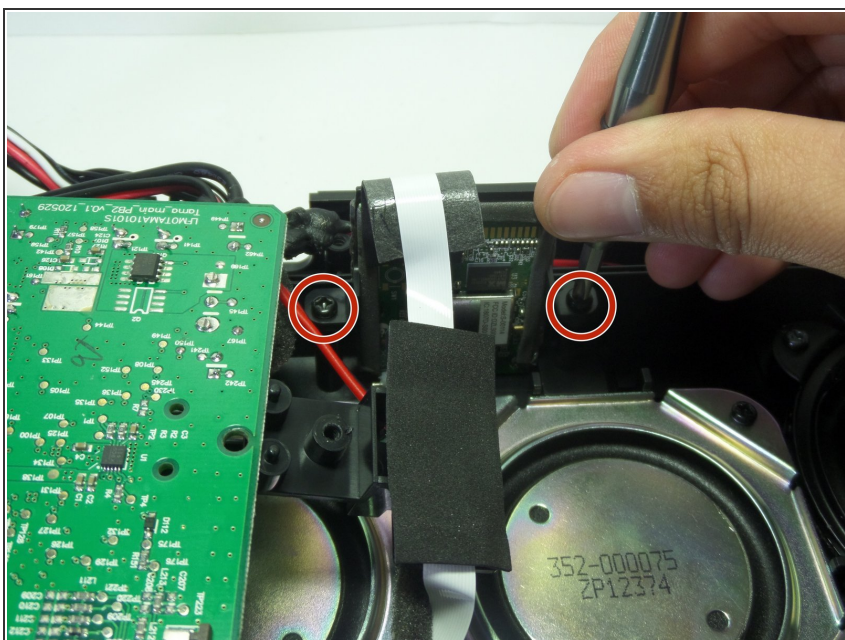
- Pull up on the lock connecting the band connector to the motherboard with your finger tips.
- Detach the band connector gently from the motherboard.

Step 16



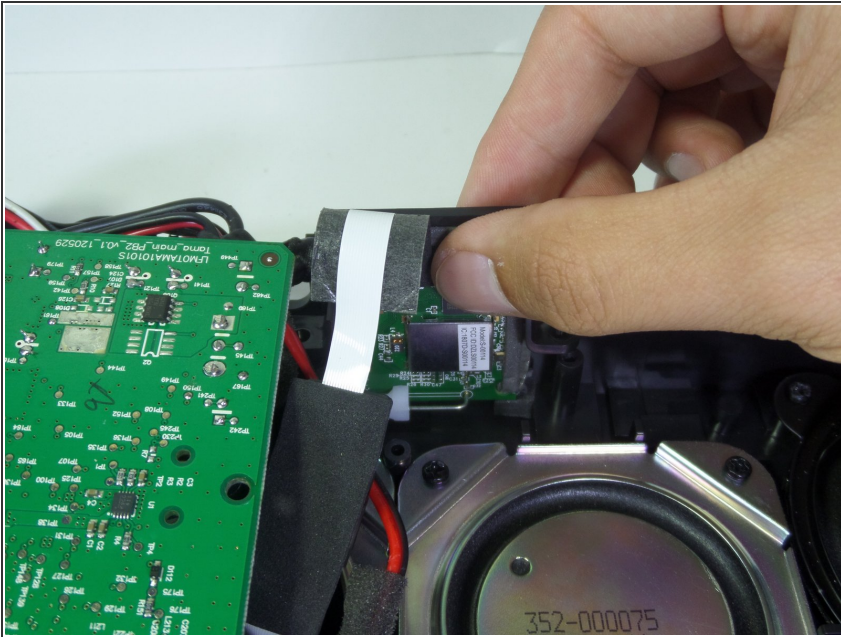
- Remove the five black 7.0mm Phillips #2 screws.

Step 17



- Move the motherboard away from bluetooth adapter gently.
- Remove two 7.0mm Phillips #2 screws.
- ⓘ Motherboard will still be attached to device.

Step 18



- Remove the bluetooth adapter from the boombox.

To reassemble your device, follow these instructions in reverse order.