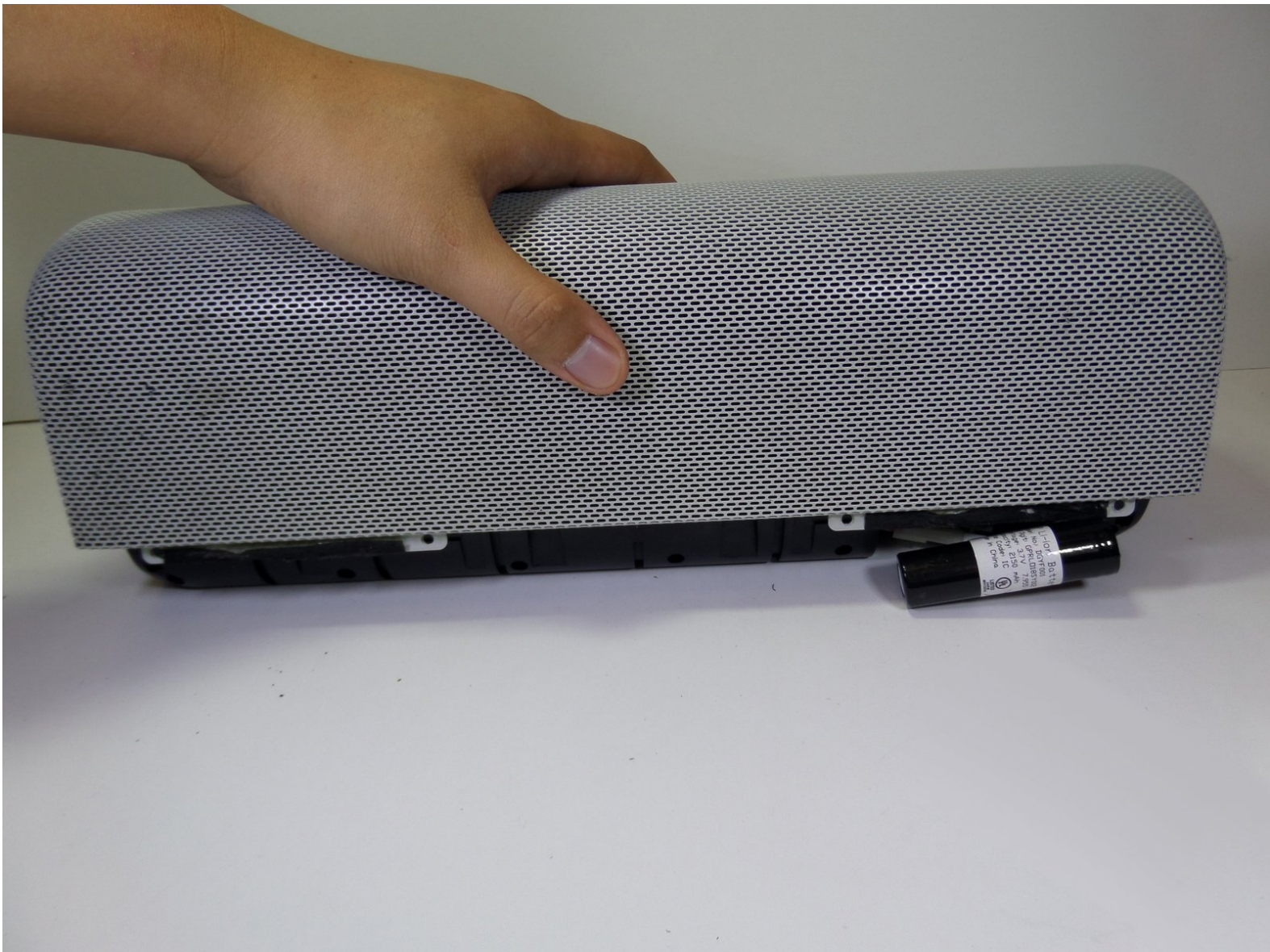




# Logitech UE Boombox Speaker Grille Replacement

Removing the speaker grille will allow you to gain access to the inside of the device in order to carry out other repairs and replacements.

Written By: tyler hua



---

## INTRODUCTION

This guide will walk you through the procedure of removing the speaker grille.

---



### TOOLS:

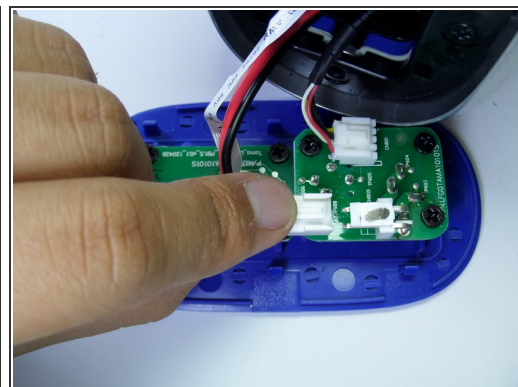
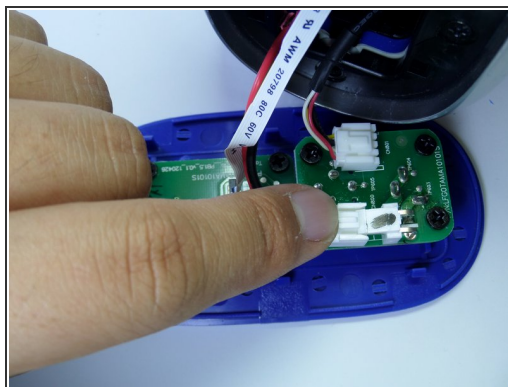
- [Metal Spudger](#) (1)
  - [Phillips #2 Screwdriver](#) (1)
-

## Step 1 — Speaker Grille



- Use a metal spudger to pry open the power button cover.
- Once the power button cover is slightly opened, use your fingers to remove the power button cover.

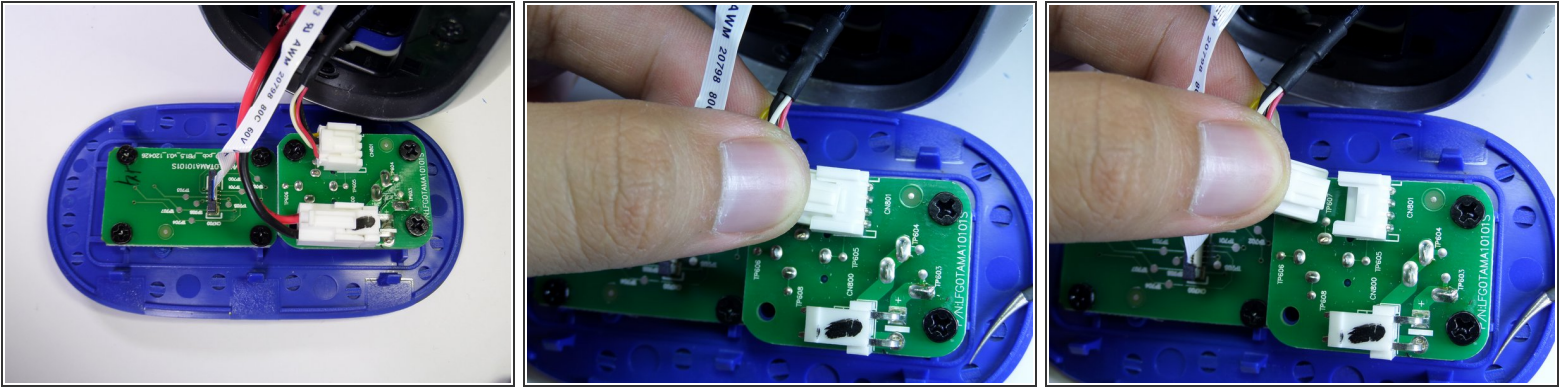
## Step 2



- Press firmly on the end of the latch and pull the two-wire connector away from the base to separate.

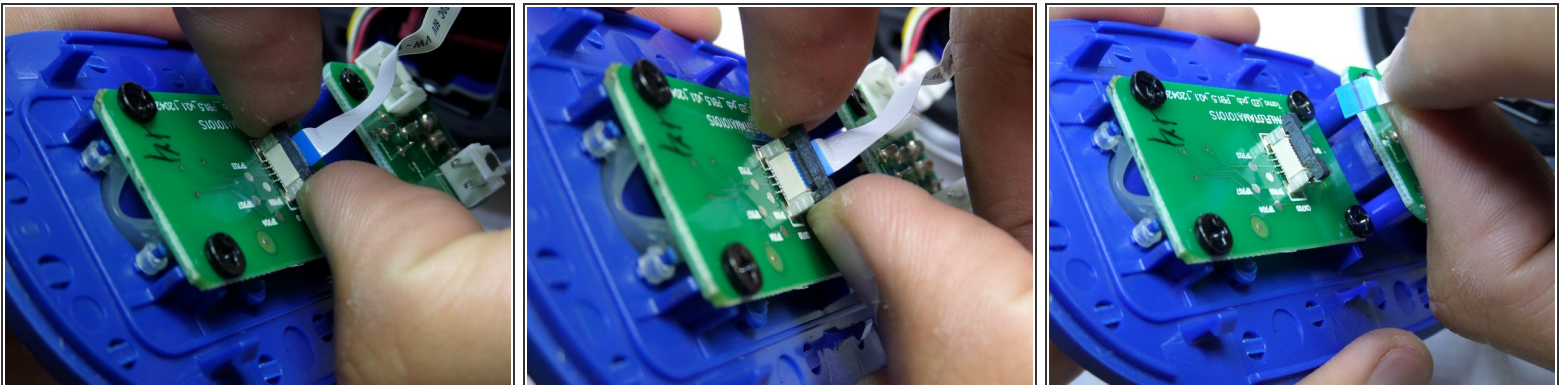


## Step 3



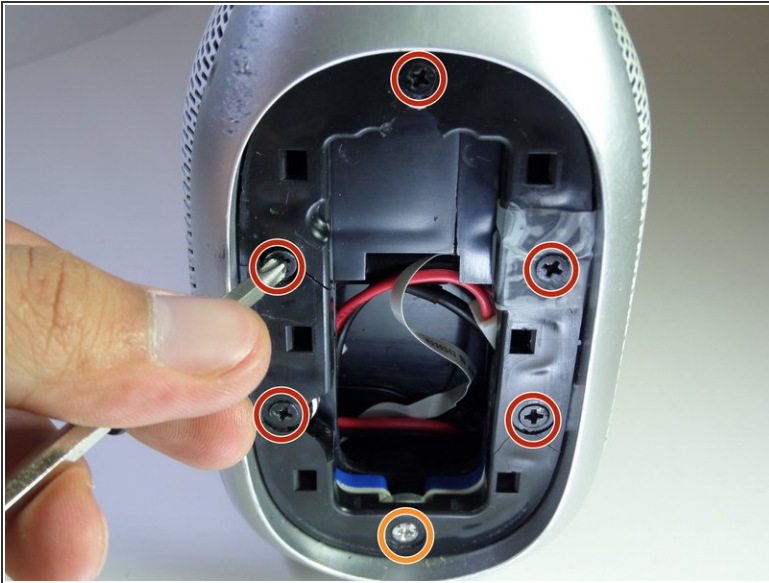
- Firmly press on the end of the latch and pull the four-wire connector away from the base to separate.

## Step 4



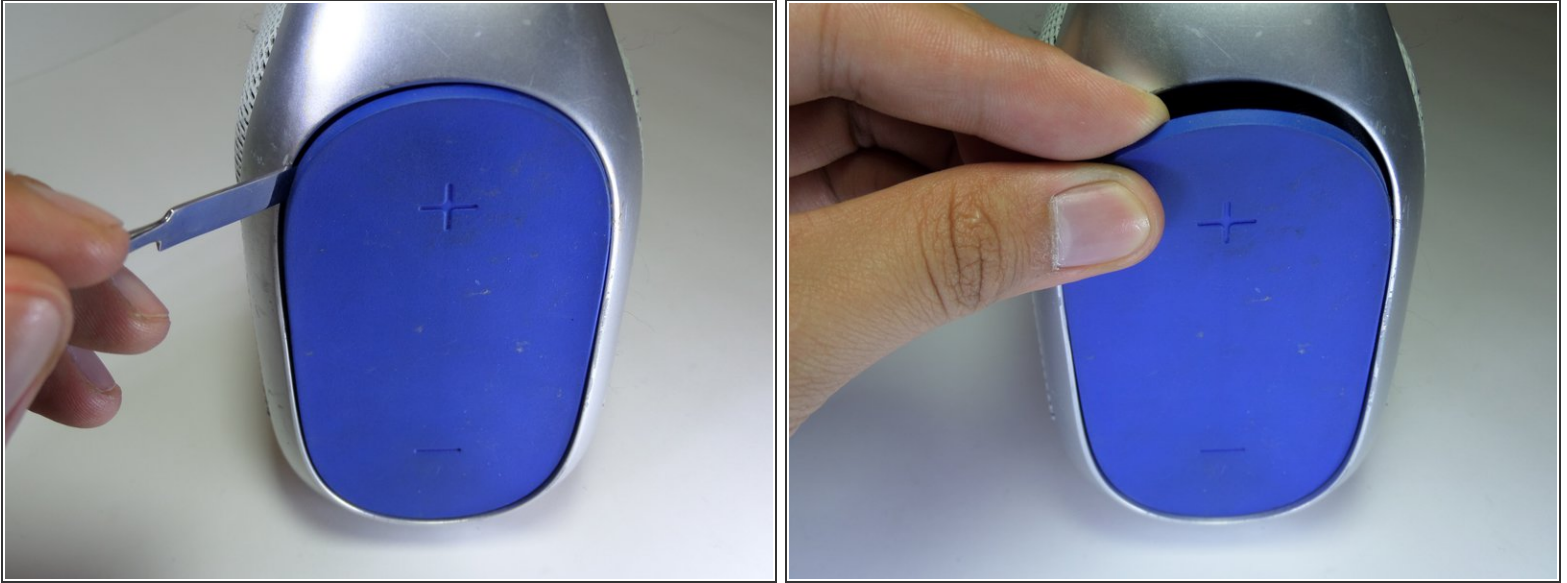
- Lightly, pry up on each side of the black band connector lock using your fingertips.
- Once unlocked, pull straight up on the connector to remove.

## Step 5



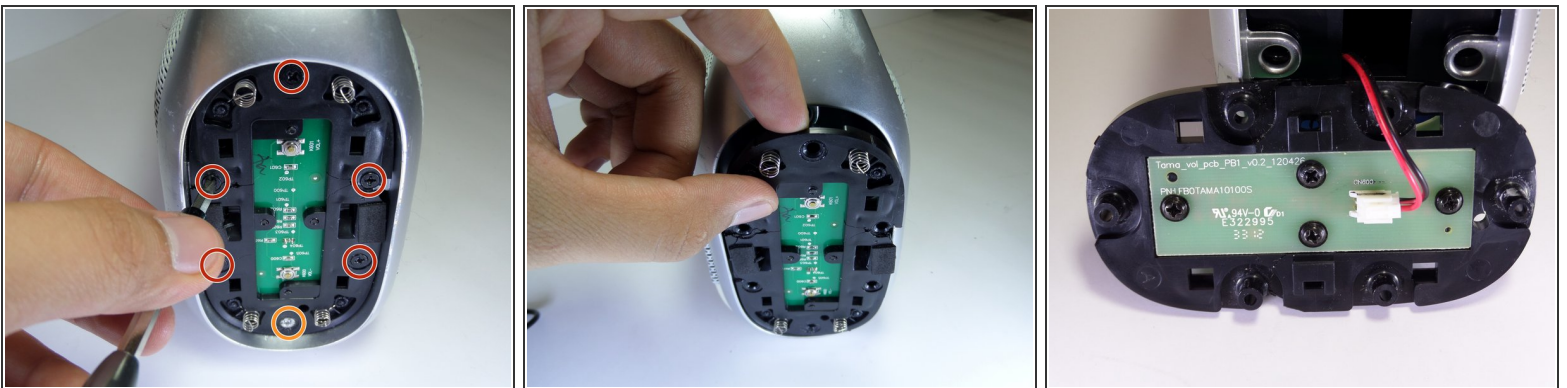
- Remove the five black 14mm Phillips #2 screws from the black plastic side panel.
- Remove the one silver 16mm Phillips #2 screws from the black plastic side panel.
- Remove the black plastic screw panel from the boombox.

## Step 6



- On the opposite side of the device, pry open the volume rocker with a metal spudger.
- Remove the panel with your fingers once the volume rocker is slightly opened.

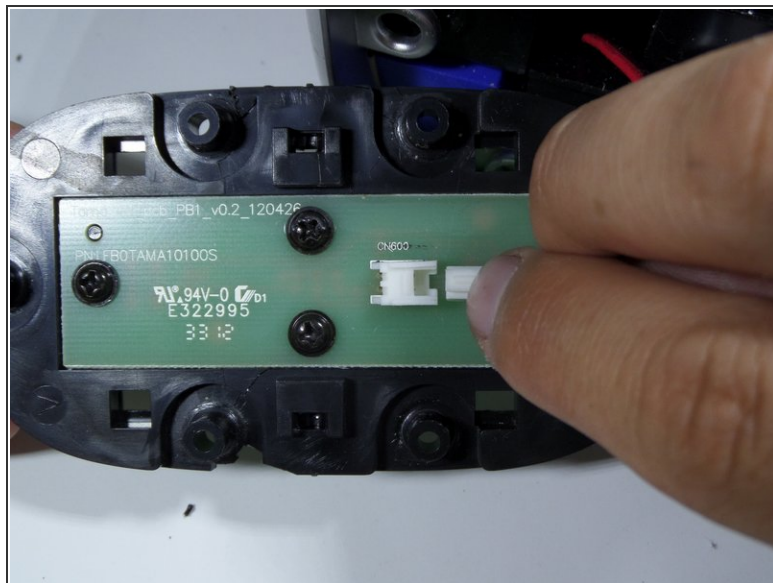
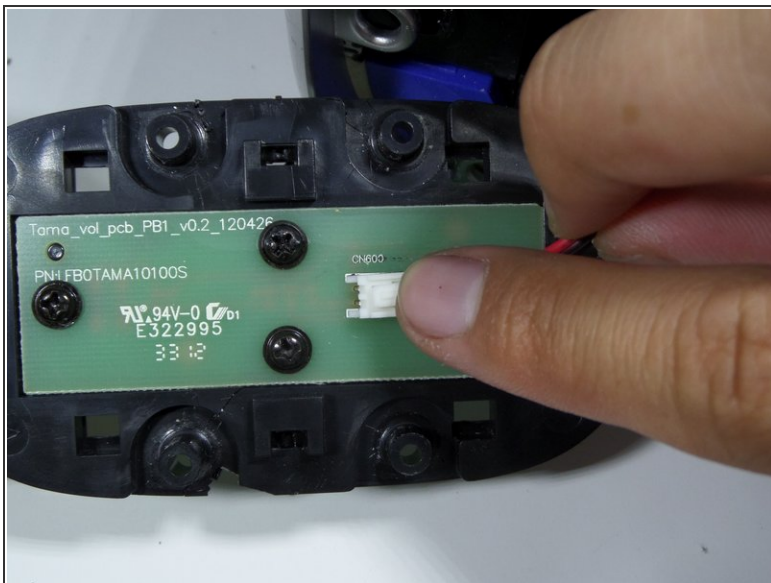
## Step 7



- Remove the five black 14mm Phillips #2 screws from the black plastic side panel.
- Remove the one silver 16 mm Phillips #2 screw from the black plastic side panel.
- Once all screws are removed, take the screw panel out of the device to gain access to the back of the panel.



## Step 8



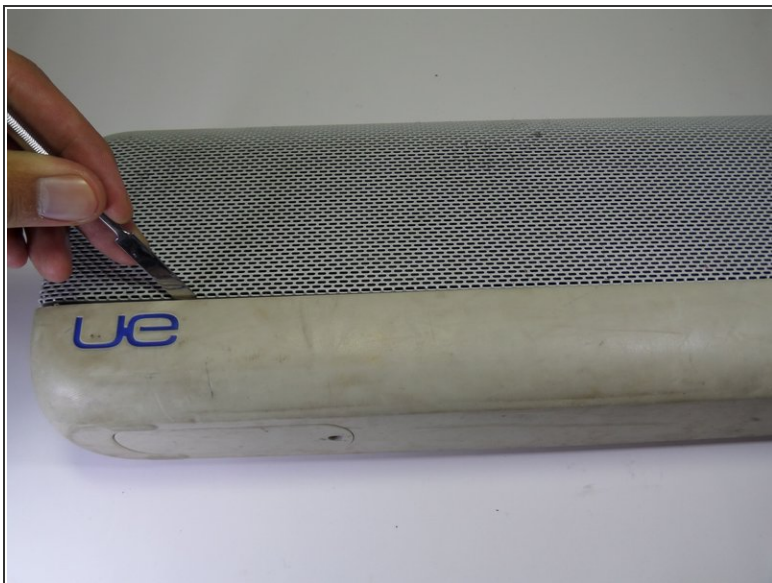
- Firmly press on the end of the latch and pull the two-wire connector away from the base.

## Step 9



- Pull up on the aluminum boombox handle to remove.

## Step 10



- Use a metal spudger to pry the rubber base apart from the aluminum grille.

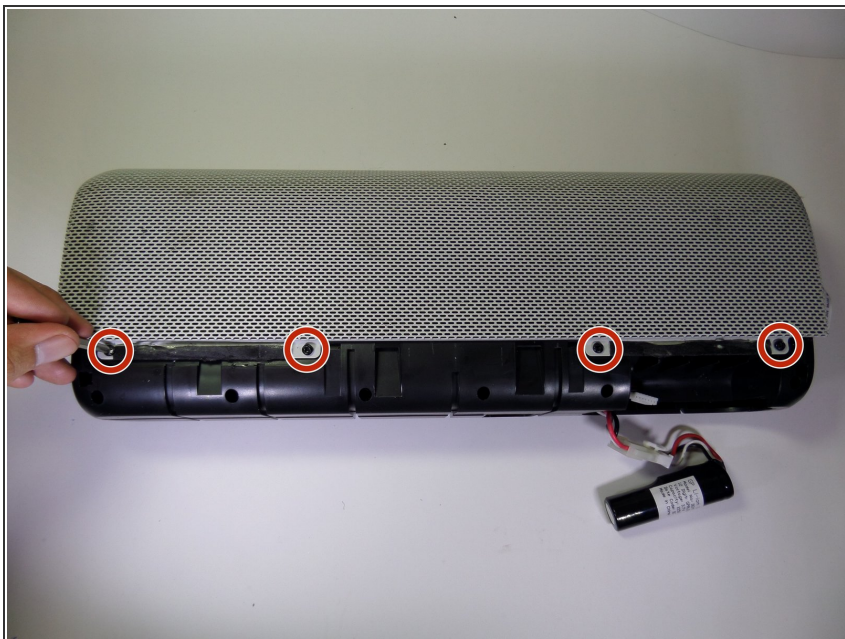
## Step 11



- Pull the rubber base away from the boombox.



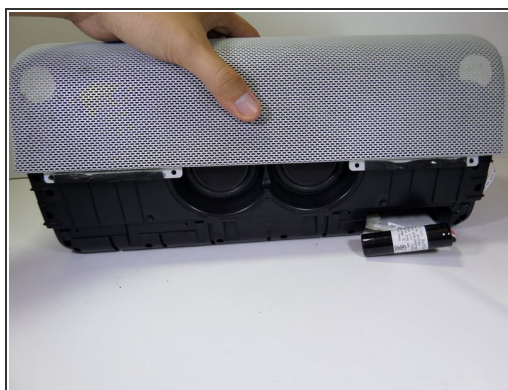
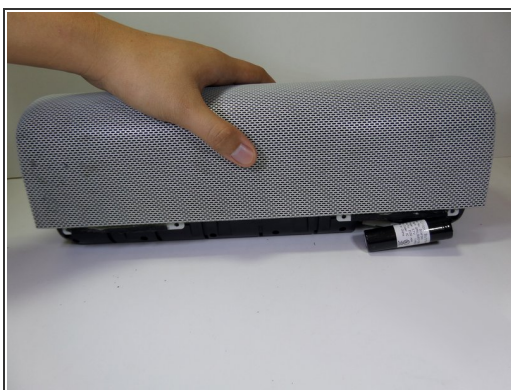
## Step 12



- Remove the four black 7.5mm Phillips #2 screws on each side of the device.

**i** There should be a total of eight screws removed in this step.

## Step 13



- Pull vertically on the speaker grille to remove it from the boombox.

To reassemble your device, follow these instructions in reverse order.