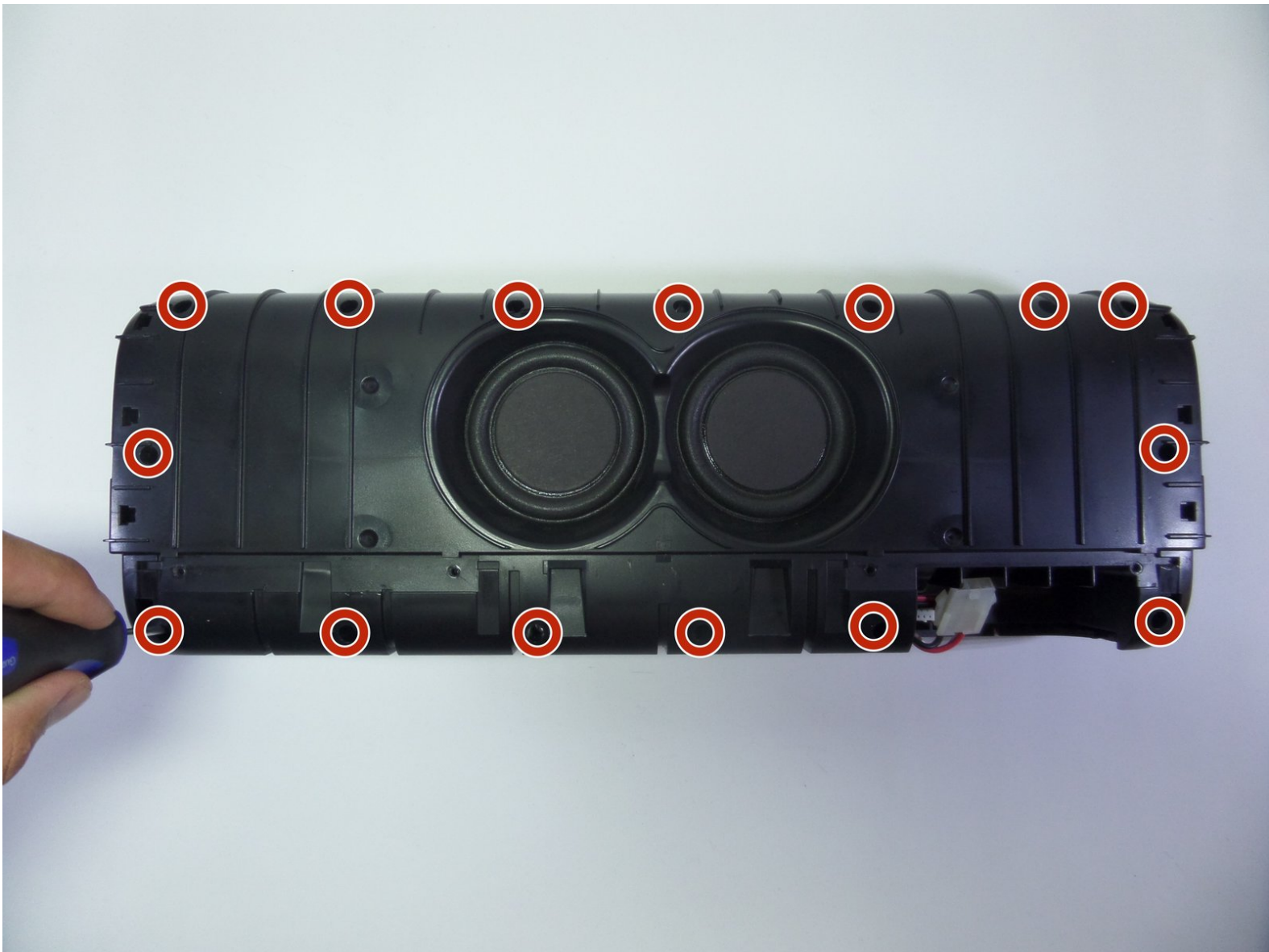




Logitech UE Boombox Speaker Replacement

We are going to guide people through the replacement of the speakers that are located inside the Logitech UE Boombox.

Written By: Breean Mokede





TOOLS:

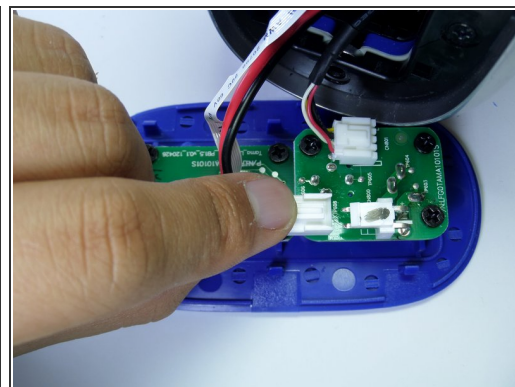
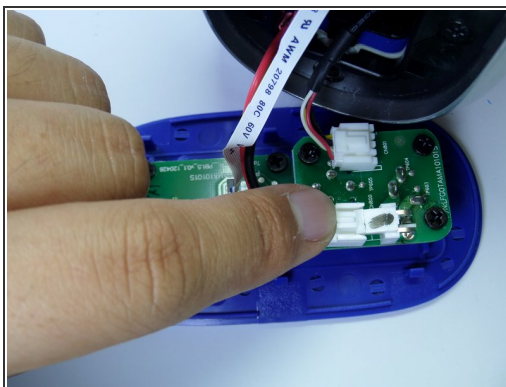
- [Metal Spudger](#) (1)
- [Phillips #2 Screwdriver](#) (1)
- [Soldering Iron](#) (1)

Step 1 — Speaker Grille



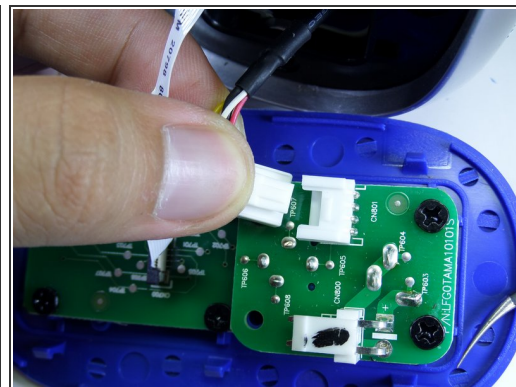
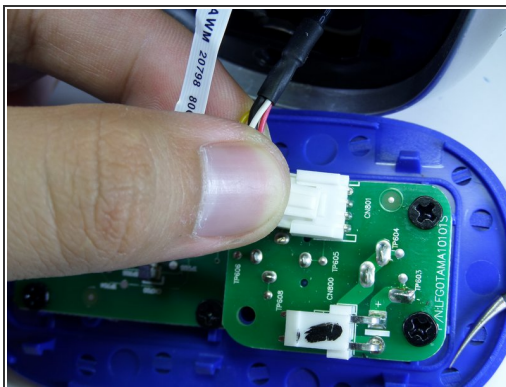
- Use a metal spudger to pry open the power button cover.
- Once the power button cover is slightly opened, use your fingers to remove the power button cover.

Step 2



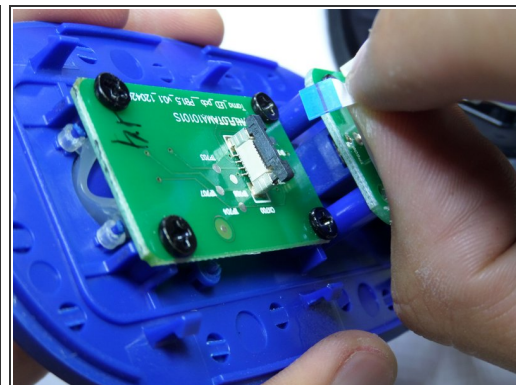
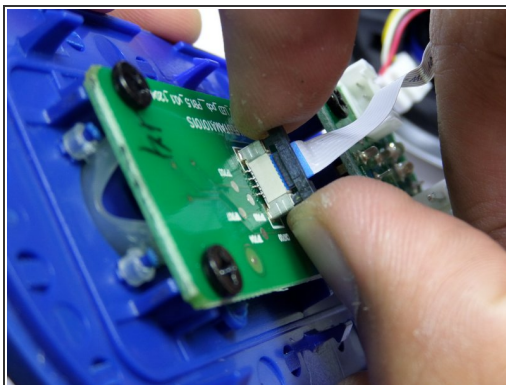
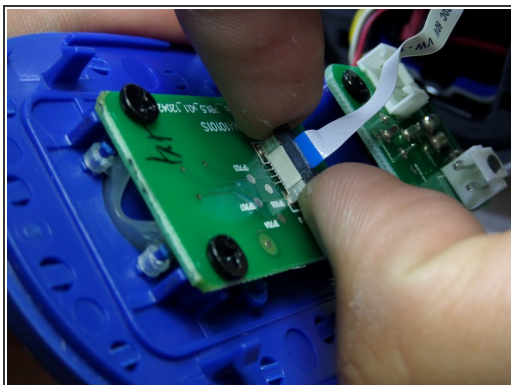
- Press firmly on the end of the latch and pull the two-wire connector away from the base to separate.

Step 3



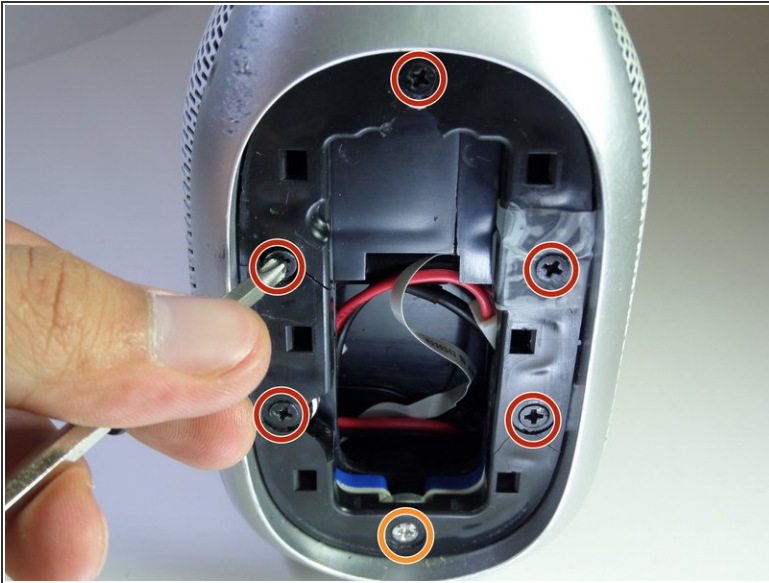
- Firmly press on the end of the latch and pull the four-wire connector away from the base to separate.

Step 4



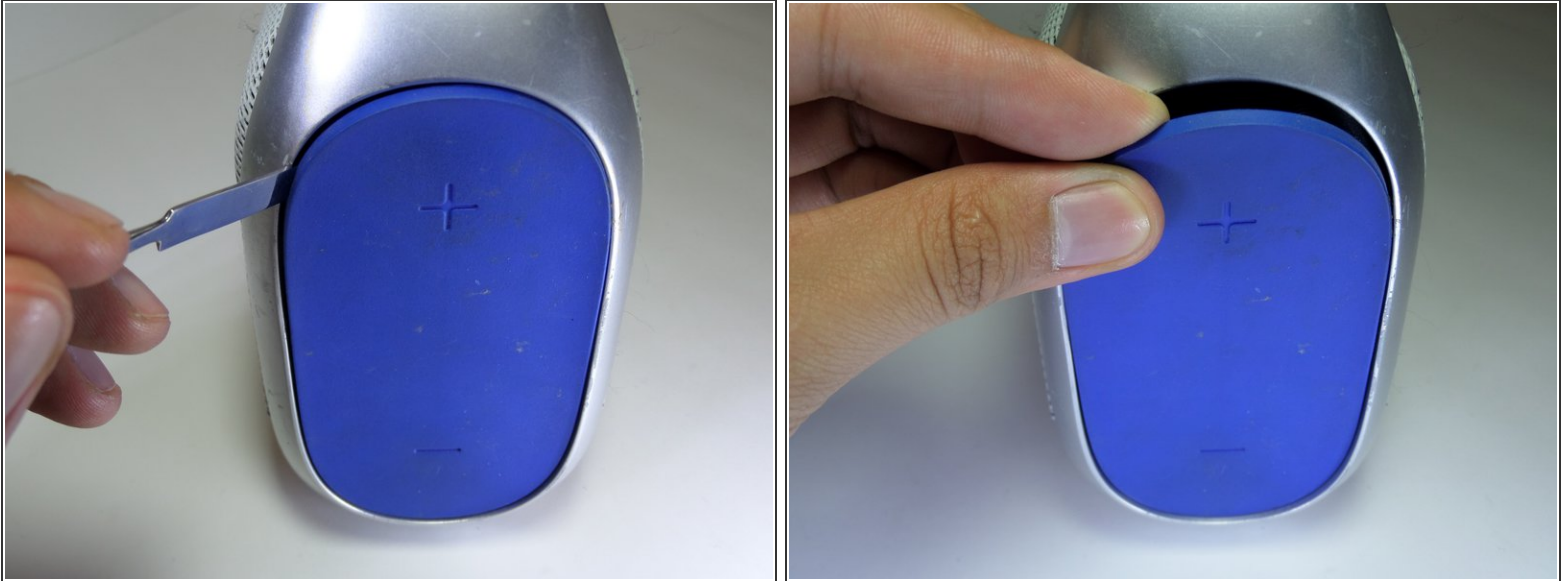
- Lightly, pry up on each side of the black band connector lock using your fingertips.
- Once unlocked, pull straight up on the connector to remove.

Step 5



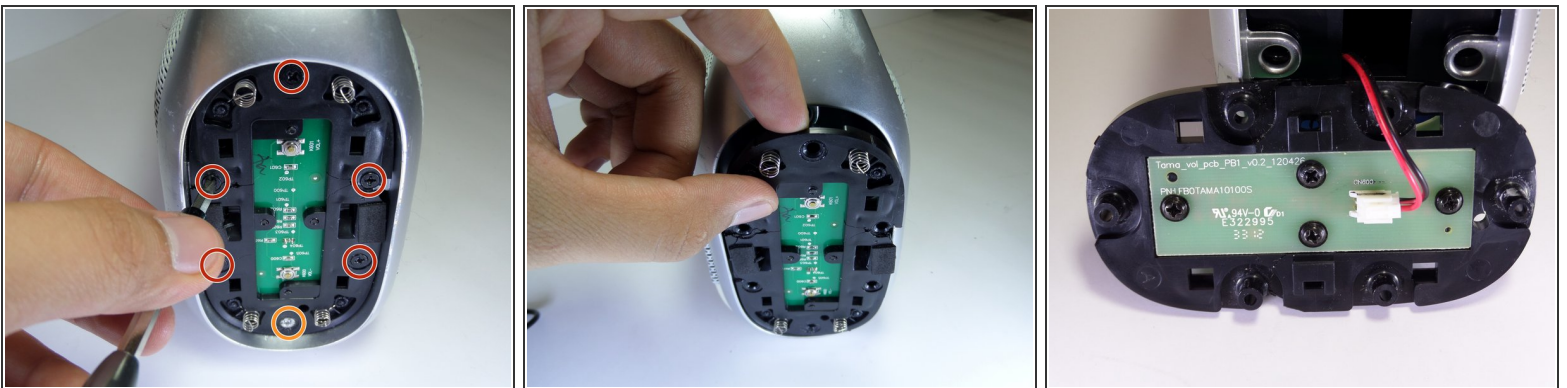
- Remove the five black 14mm Phillips #2 screws from the black plastic side panel.
- Remove the one silver 16mm Phillips #2 screws from the black plastic side panel.
- Remove the black plastic screw panel from the boombox.

Step 6



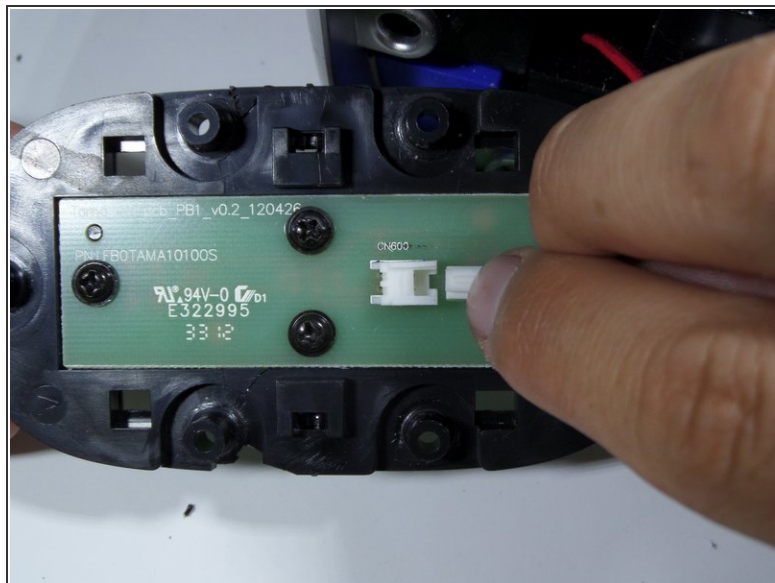
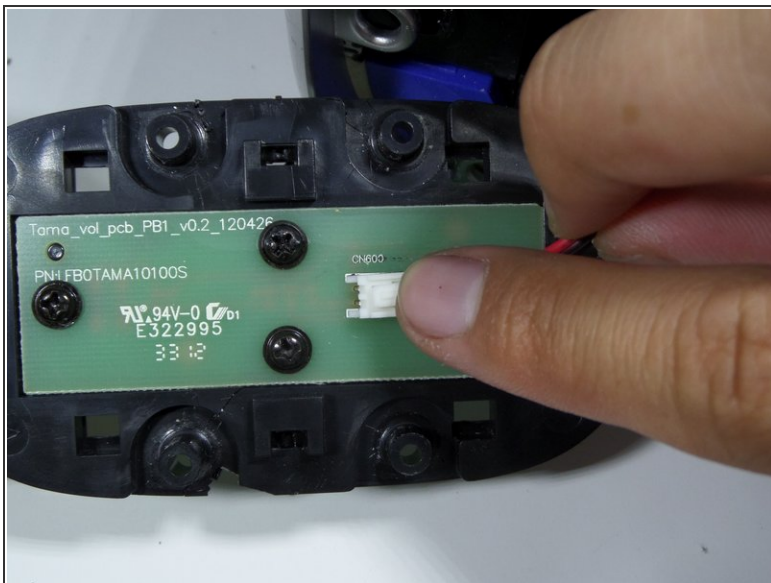
- On the opposite side of the device, pry open the volume rocker with a metal spudger.
- Remove the panel with your fingers once the volume rocker is slightly opened.

Step 7



- Remove the five black 14mm Phillips #2 screws from the black plastic side panel.
- Remove the one silver 16 mm Phillips #2 screw from the black plastic side panel.
- Once all screws are removed, take the screw panel out of the device to gain access to the back of the panel.

Step 8



- Firmly press on the end of the latch and pull the two-wire connector away from the base.

Step 9



- Pull up on the aluminum boombox handle to remove.

Step 10



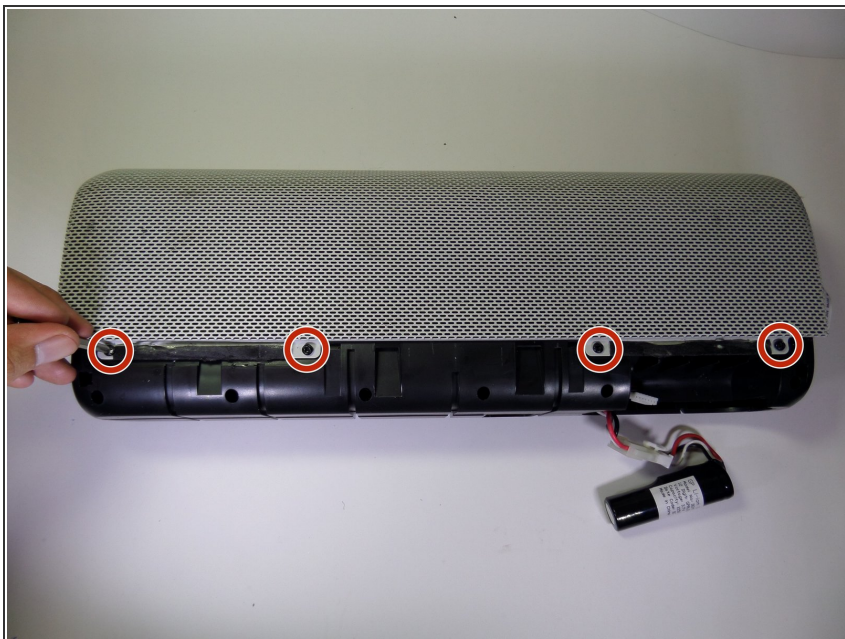
- Use a metal spudger to pry the rubber base apart from the aluminum grille.

Step 11



- Pull the rubber base away from the boombox.

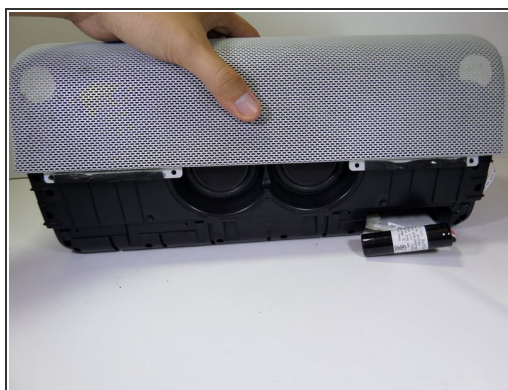
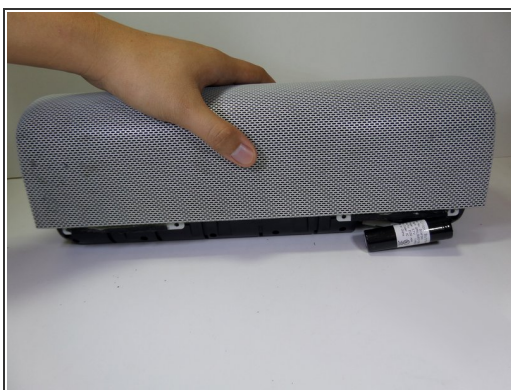
Step 12



- Remove the four black 7.5mm Phillips #2 screws on each side of the device.

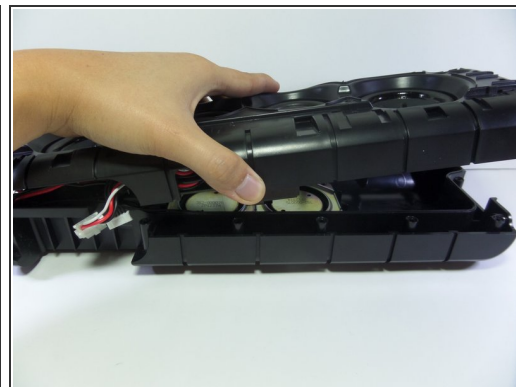
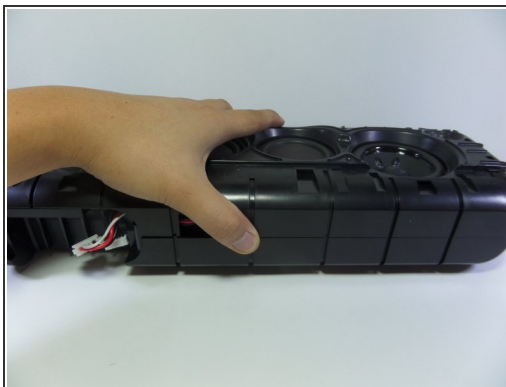
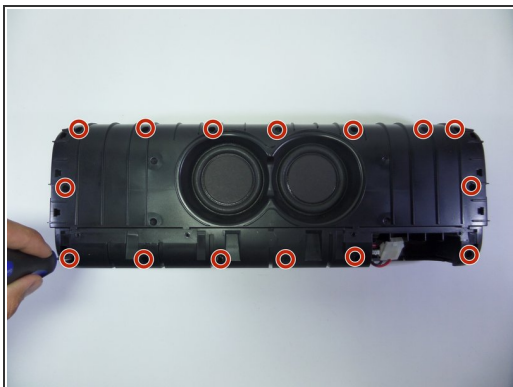
i There should be a total of eight screws removed in this step.

Step 13



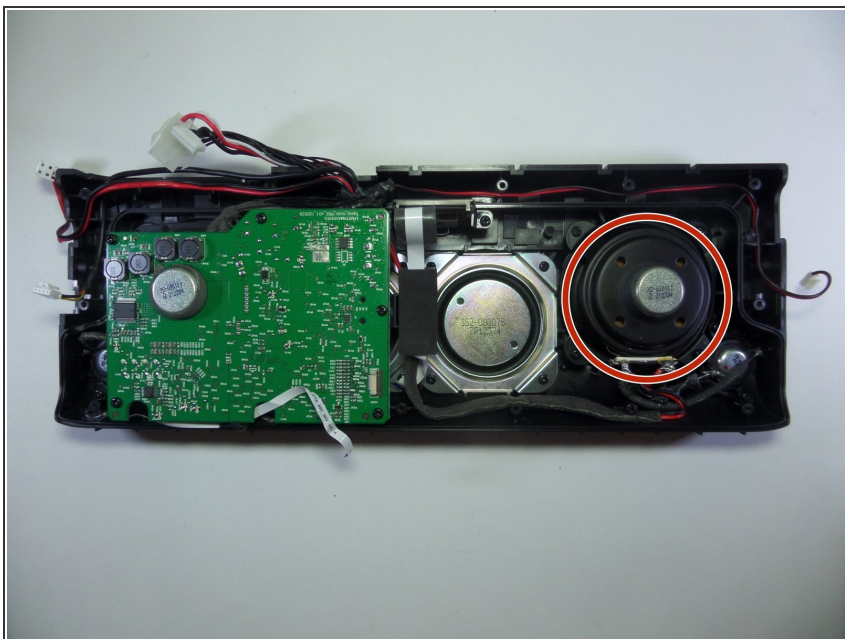
- Pull vertically on the speaker grille to remove it from the boombox.

Step 14 — Speaker



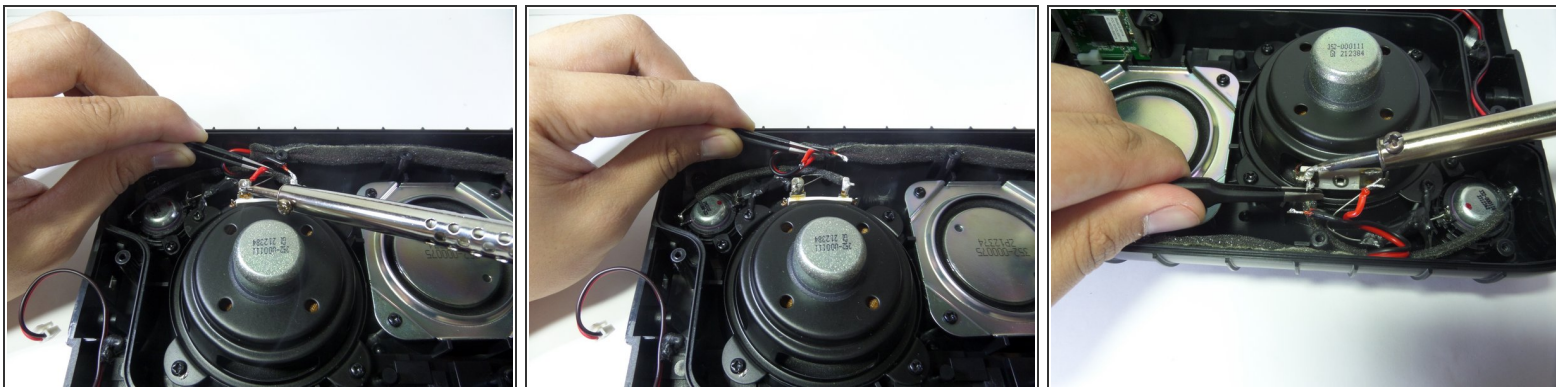
- Remove the fifteen 13.0 mm screws with a #0 Phillips from the side of the device containing two speakers.
- Separate the two halves by gently pulling them apart.
- ⓘ The screws at this step are embedded deep within the device so make sure your screw driver is long.

Step 15



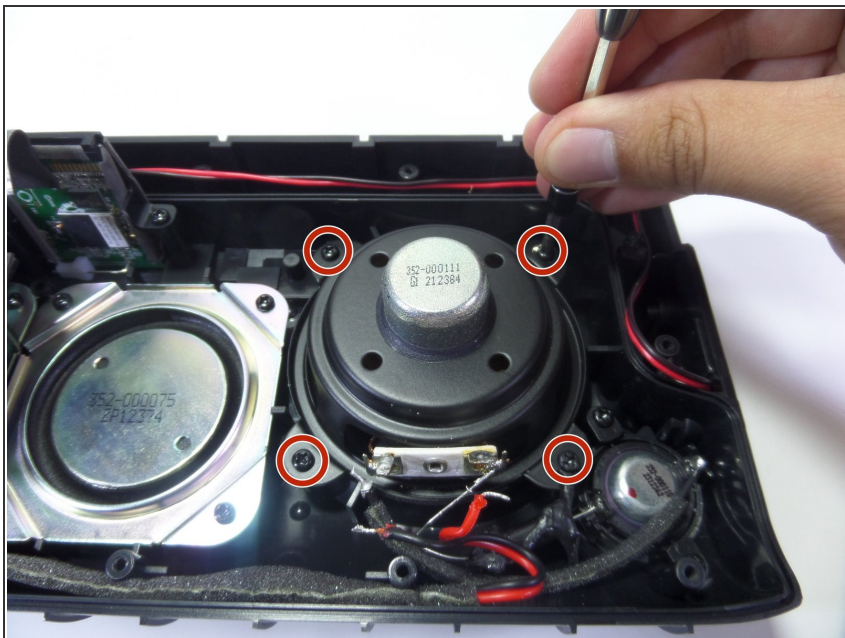
- Locate the speaker adjacent to the motherboard.

Step 16



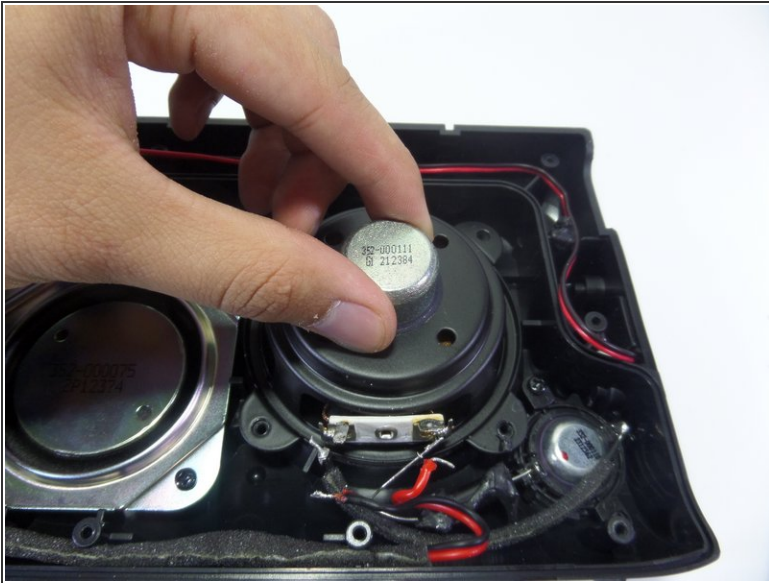
- Desolder all four wires connecting the speaker.
- ⓘ One red and one black wire are located on each side of speaker.
- ⓘ Check out the [How to Solder and Desolder Connections guide](#) for soldering help.

Step 17



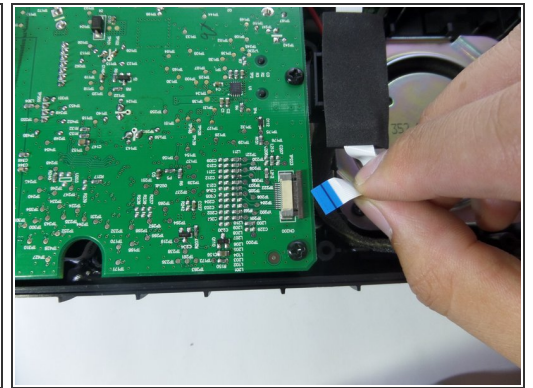
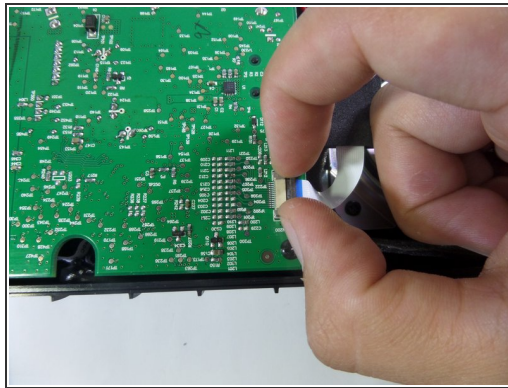
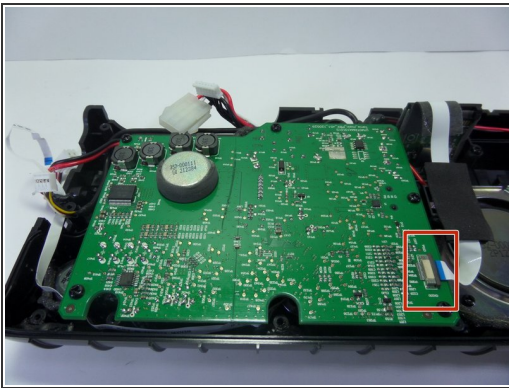
- Remove the four 7.0 mm screws with a Phillips #2.

Step 18



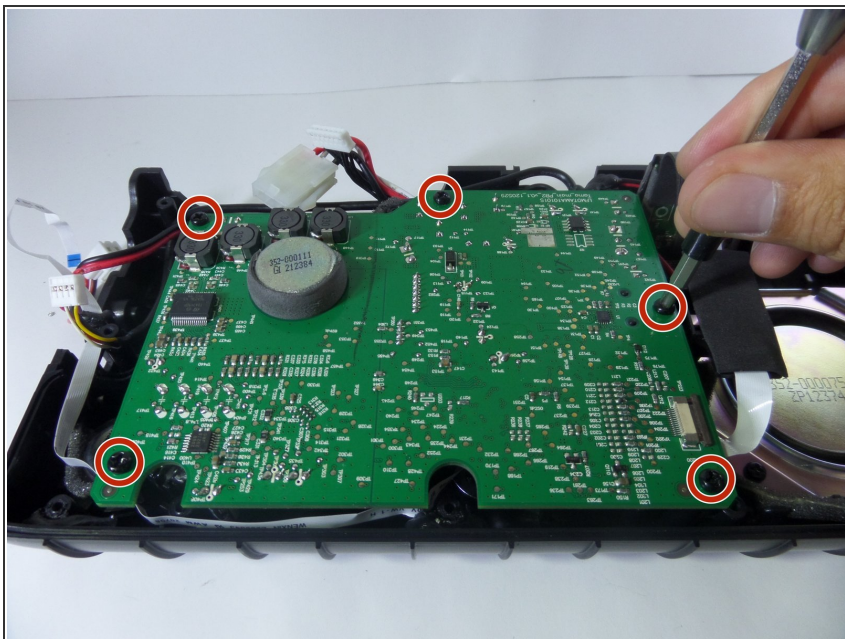
- Lift the speaker out of the device using your fingers.

Step 19



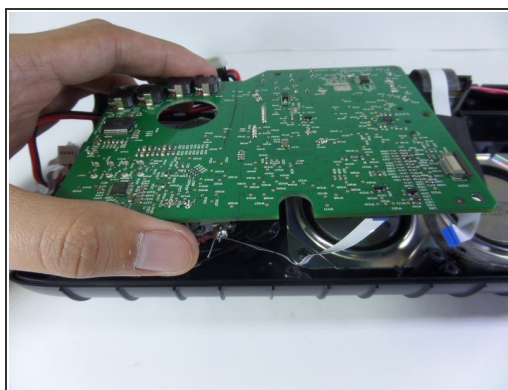
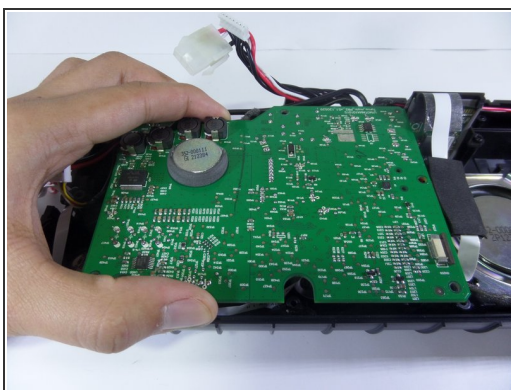
- Pull up on the lock to detach the band connector from the motherboard.

Step 20



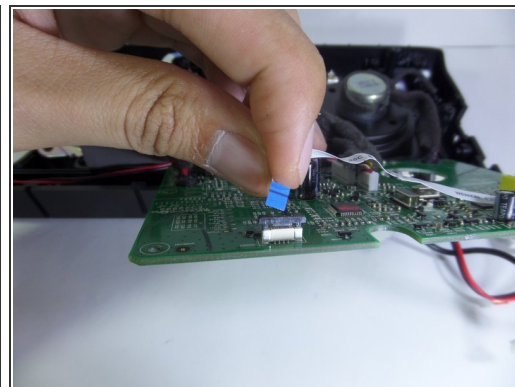
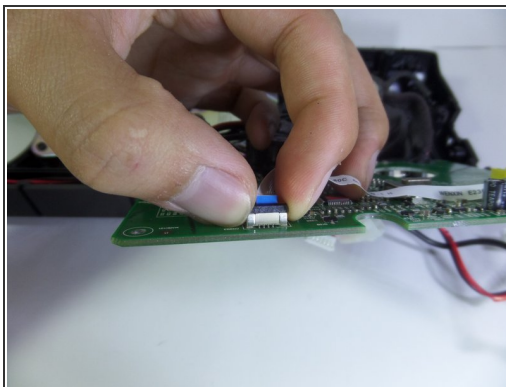
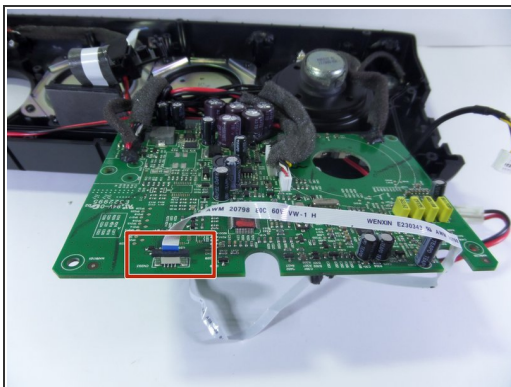
- Remove five 7.0 mm screws on the motherboard with a Phillips #2.

Step 21



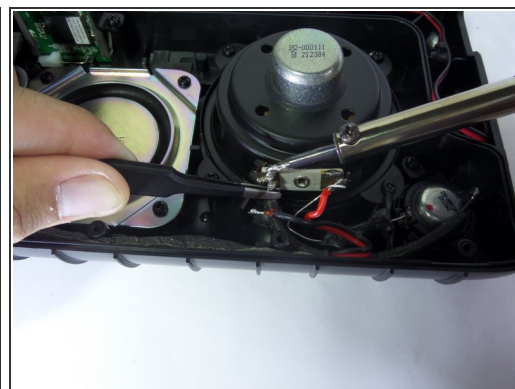
- Lift the motherboard with your fingers.
 - Flip over to reveal the underside.
- i** Motherboard will still be attached to the device.

Step 22



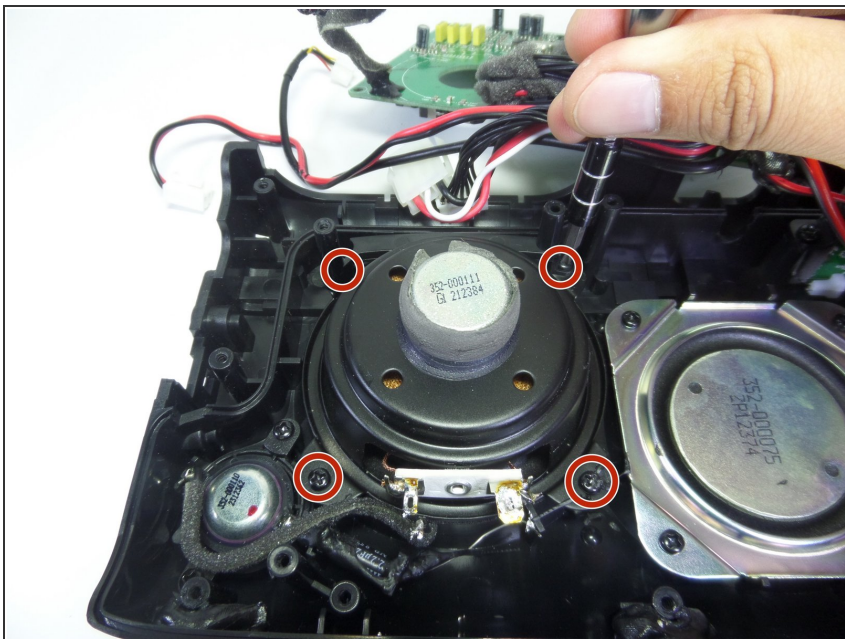
- Pull up on the lock of the band connector to detach it from the motherboard.

Step 23



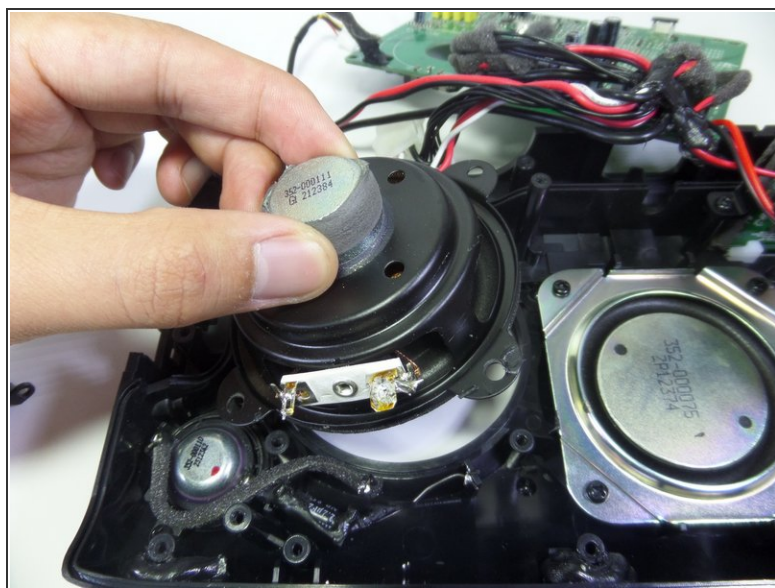
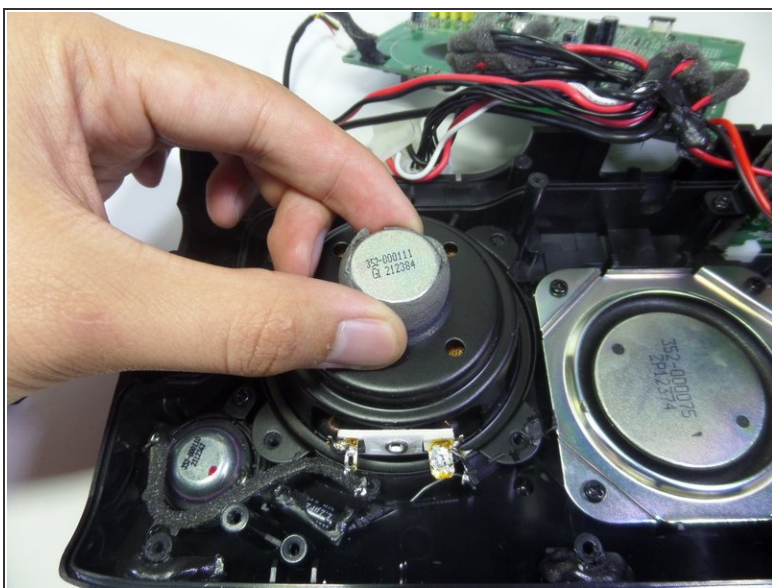
- Desolder all four wires connecting the speaker.
- ⓘ One red and one black wire are located on each side of speaker.

Step 24



- Remove four 7.0 mm screws with a Phillips #2.

Step 25



- Lift the speaker out of the device using your fingers.

To reassemble your device, follow these instructions in reverse order.