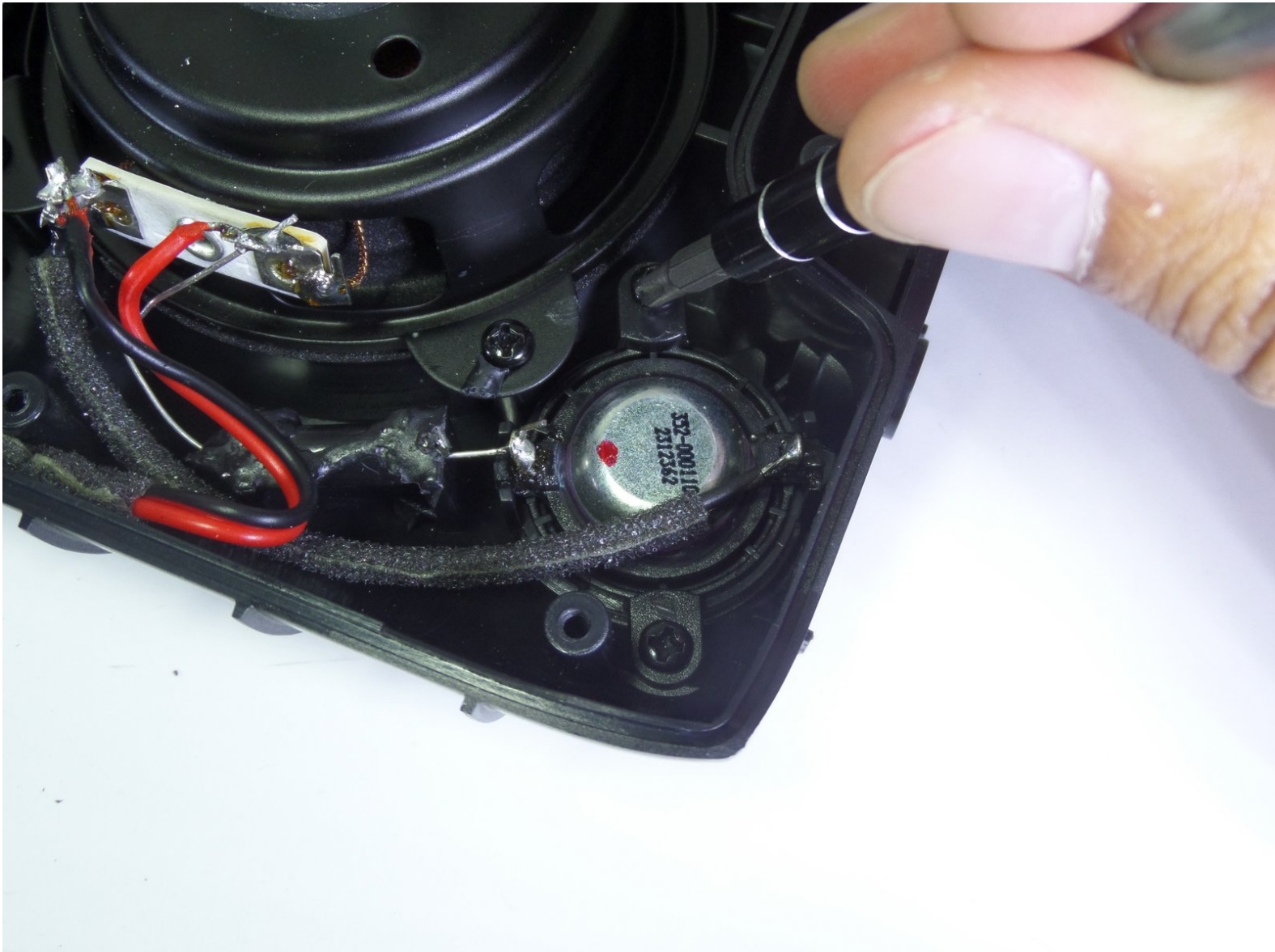




Logitech UE Boombox Tweeter Speaker Replacement

This guide demonstrates how to replace the two tweeter speakers in your Logitech UE Boombox.

Written By: Wesley Kamau



INTRODUCTION

The Logitech UE Boombox has two tweeter speakers that may need replacement due to use over time. They are essential for receiving high quality sound.

TOOLS:

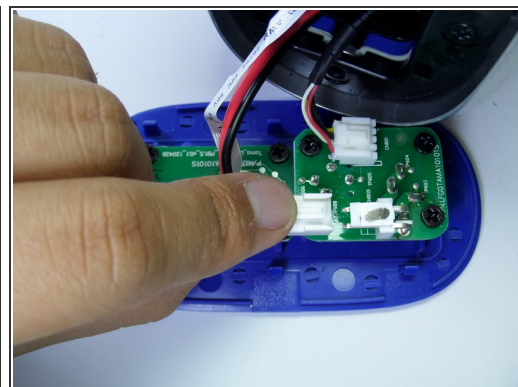
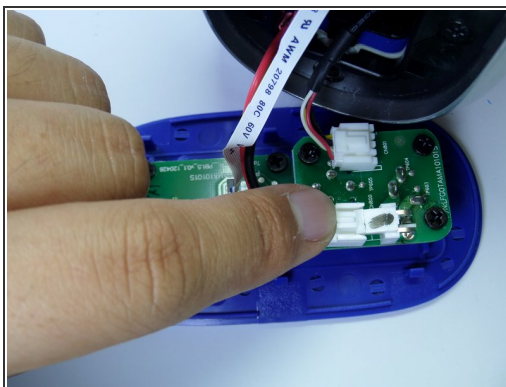
- [Metal Spudger](#) (1)
 - [Tweezers](#) (1)
 - [Phillips #2 Screwdriver](#) (1)
 - [Soldering Iron](#) (1)
-

Step 1 — Speaker Grille



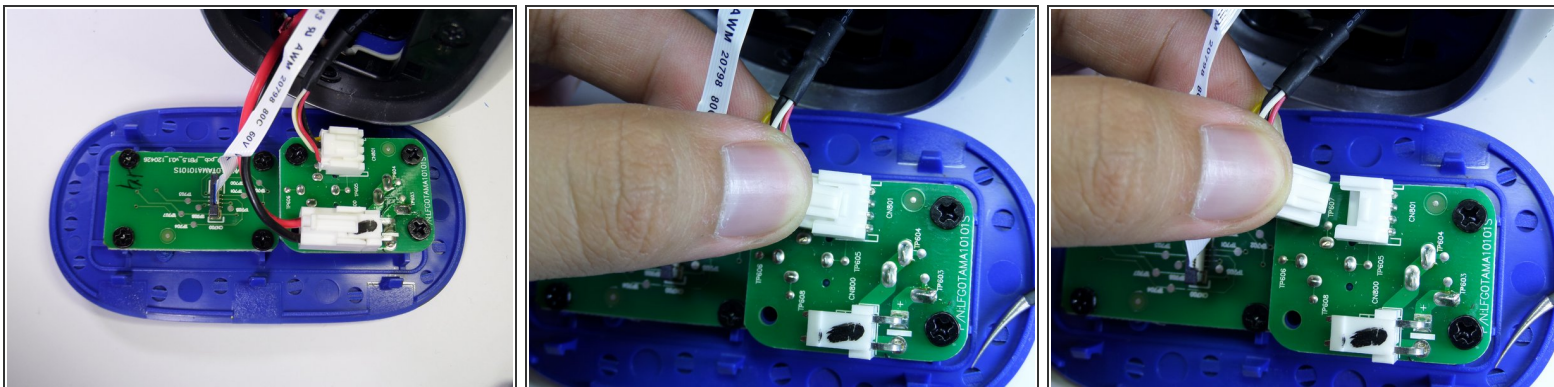
- Use a metal spudger to pry open the power button cover.
- Once the power button cover is slightly opened, use your fingers to remove the power button cover.

Step 2



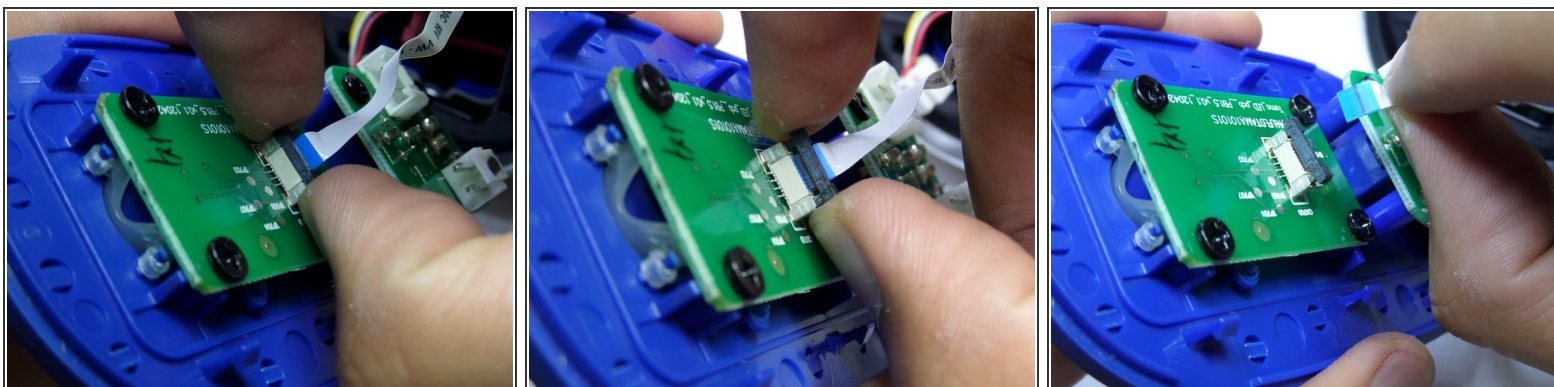
- Press firmly on the end of the latch and pull the two-wire connector away from the base to separate.

Step 3



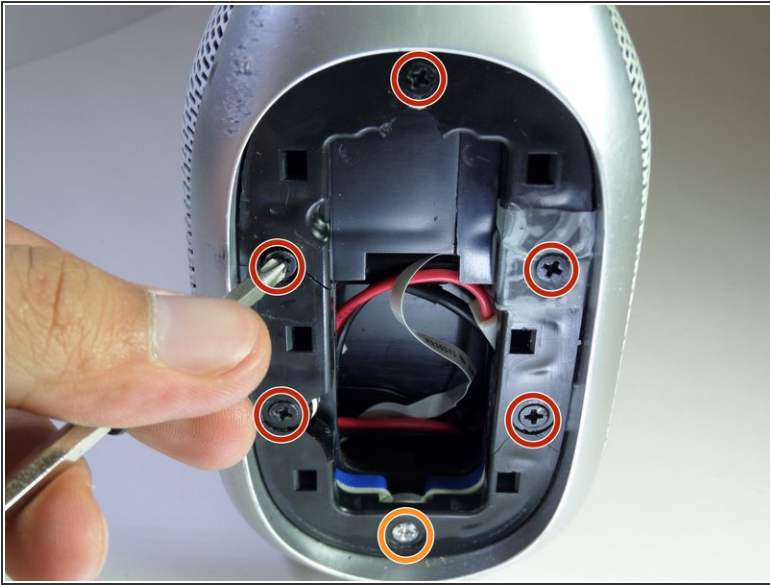
- Firmly press on the end of the latch and pull the four-wire connector away from the base to separate.

Step 4



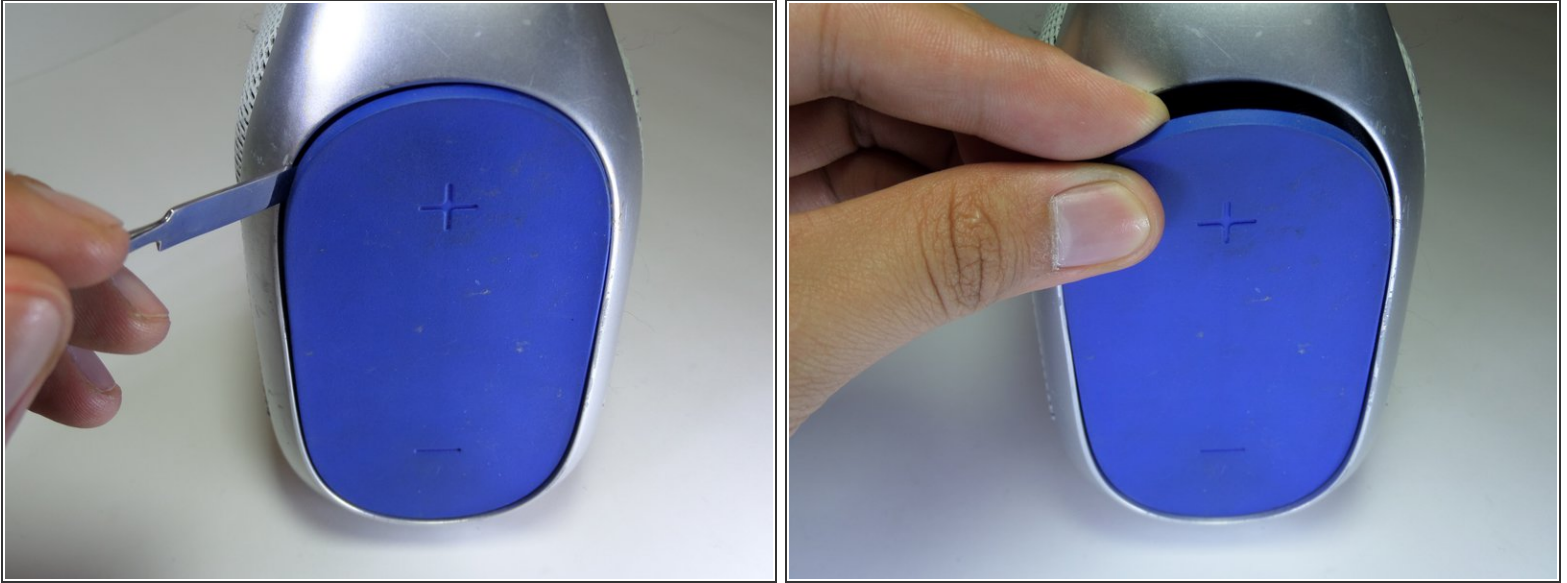
- Lightly, pry up on each side of the black band connector lock using your fingertips.
- Once unlocked, pull straight up on the connector to remove.

Step 5



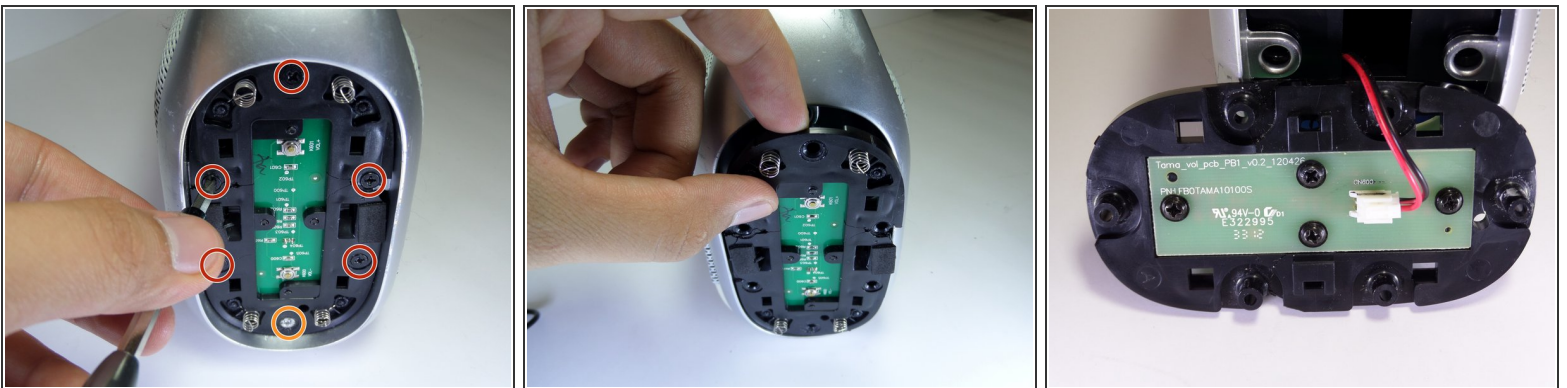
- Remove the five black 14mm Phillips #2 screws from the black plastic side panel.
- Remove the one silver 16mm Phillips #2 screws from the black plastic side panel.
- Remove the black plastic screw panel from the boombox.

Step 6



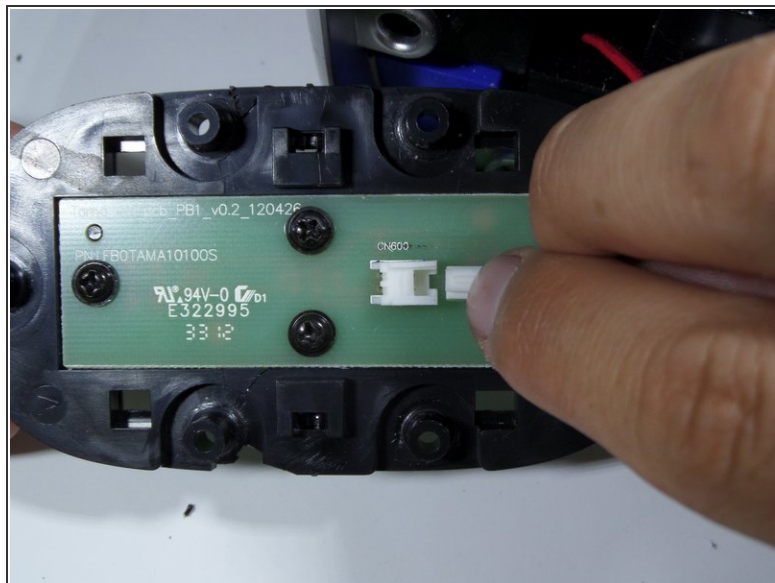
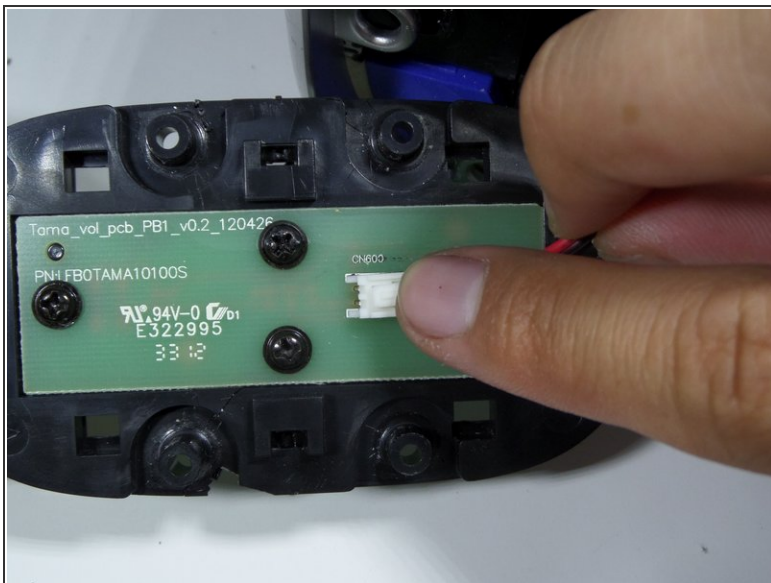
- On the opposite side of the device, pry open the volume rocker with a metal spudger.
- Remove the panel with your fingers once the volume rocker is slightly opened.

Step 7



- Remove the five black 14mm Phillips #2 screws from the black plastic side panel.
- Remove the one silver 16 mm Phillips #2 screw from the black plastic side panel.
- Once all screws are removed, take the screw panel out of the device to gain access to the back of the panel.

Step 8



- Firmly press on the end of the latch and pull the two-wire connector away from the base.

Step 9



- Pull up on the aluminum boombox handle to remove.

Step 10



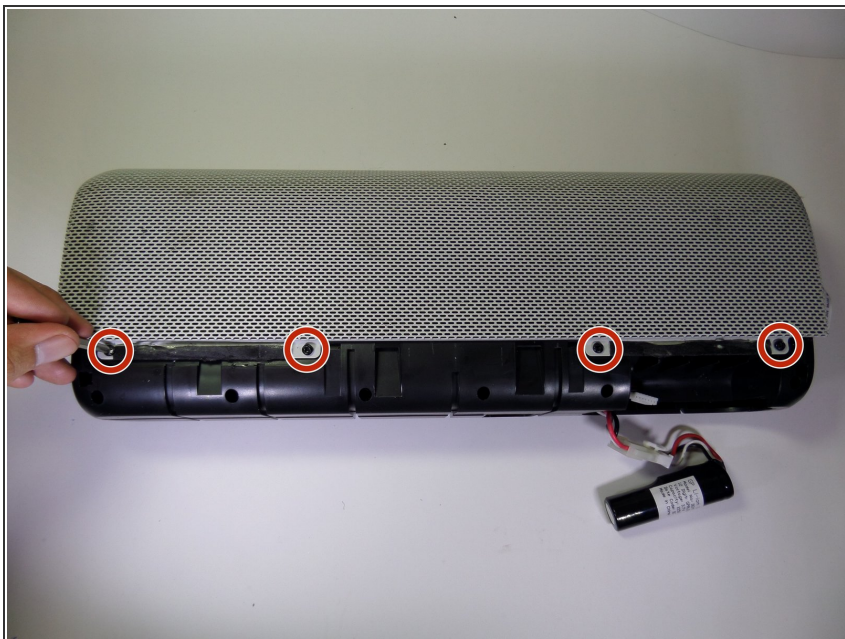
- Use a metal spudger to pry the rubber base apart from the aluminum grille.

Step 11



- Pull the rubber base away from the boombox.

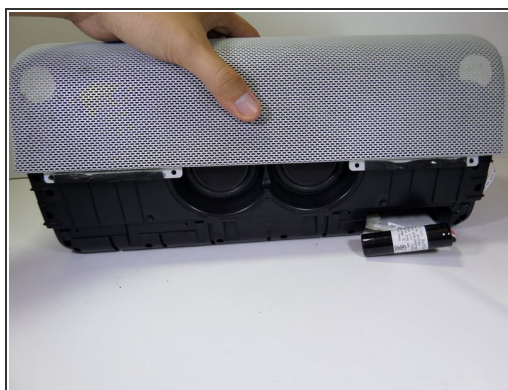
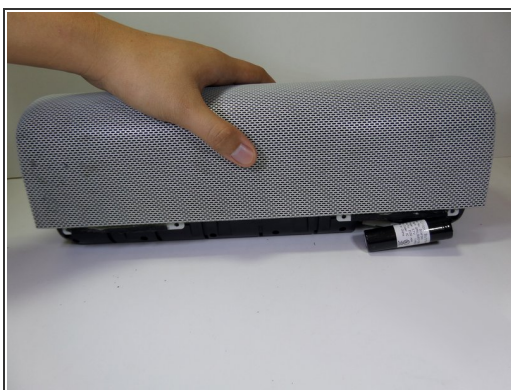
Step 12



- Remove the four black 7.5mm Phillips #2 screws on each side of the device.

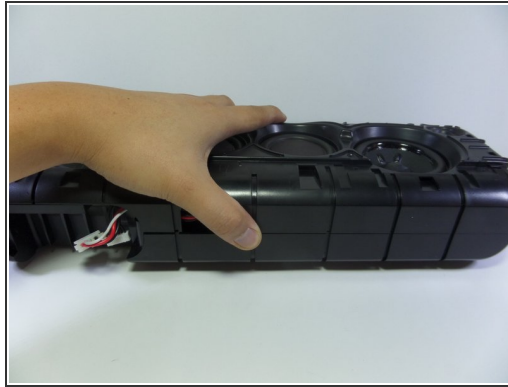
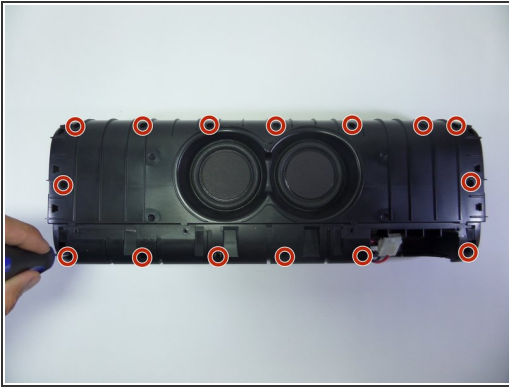
i There should be a total of eight screws removed in this step.

Step 13



- Pull vertically on the speaker grille to remove it from the boombox.

Step 14 — Tweeter Speaker



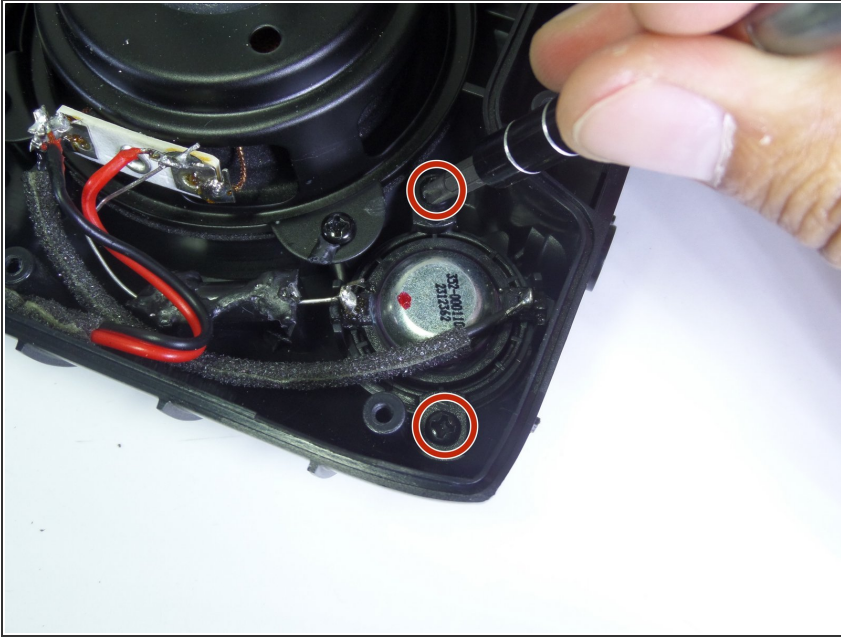
- Remove the fifteen 13.0 mm Phillips #2 screws from the side of the device containing two speakers.
- Separate the two halves by gently pulling them apart.

Step 15



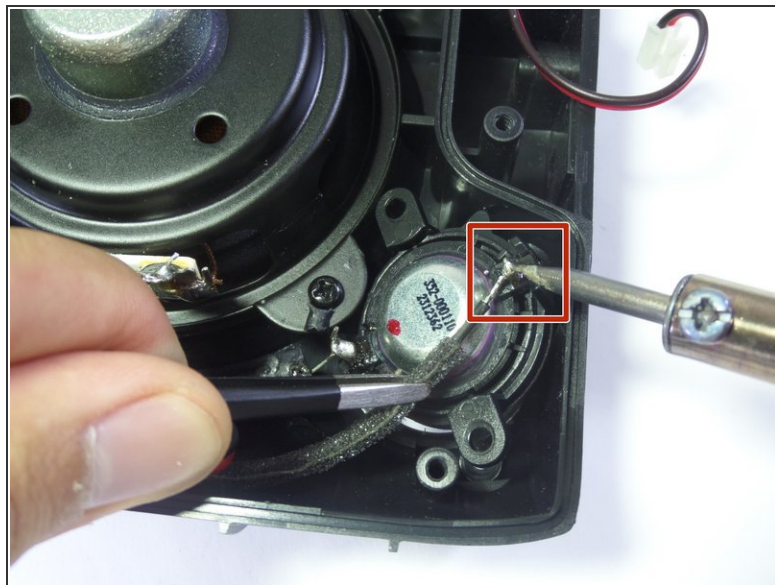
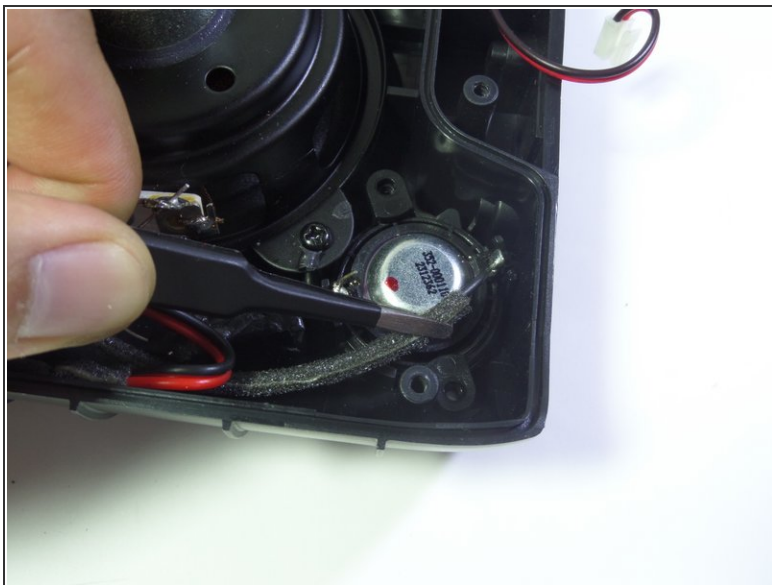
- Locate the two tweeter speakers.
- ⓘ One tweeter speaker is adjacent to primary speaker and the other is below the motherboard.

Step 16



- Remove the two 7.0 mm screws Phillips #2.

Step 17



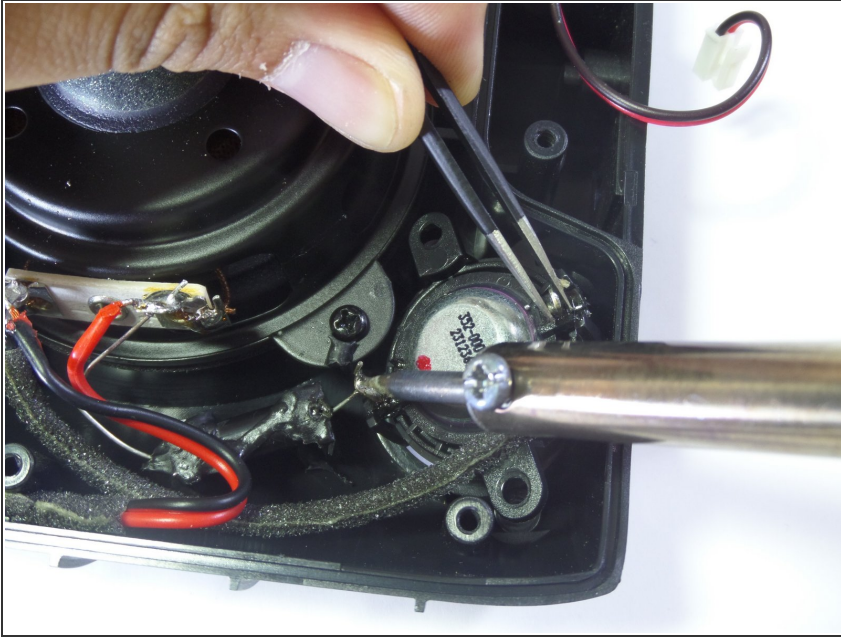
- Using flat-head Tweezers lift tweeter speaker at an angle by the black connecting wire.

- Desolder the black connecting wire using the Soldering Iron.

⚠ Soldering Iron will be hot and surrounding plastic can easily be damaged.

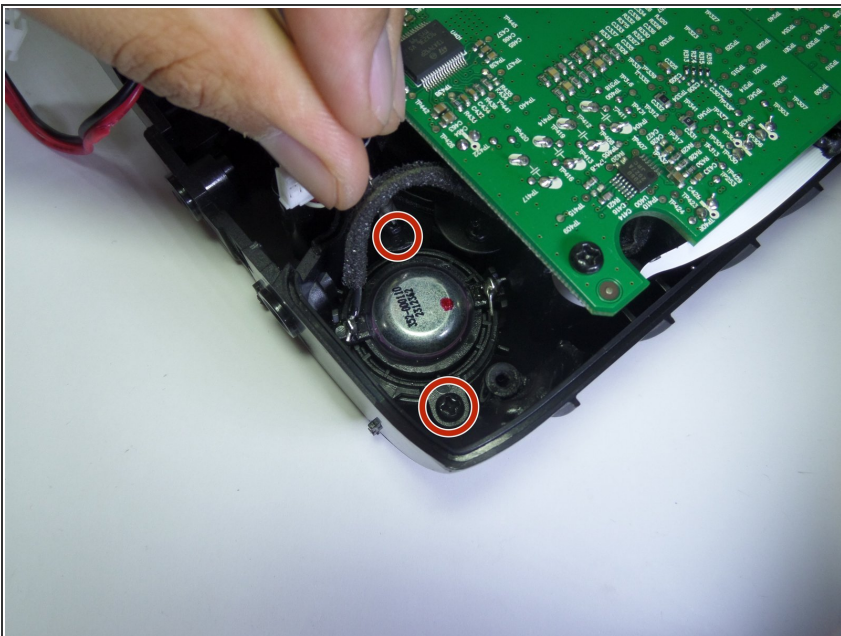
ℹ For soldering help, check out the [How to Solder and Desolder Connections guide](#).

Step 18



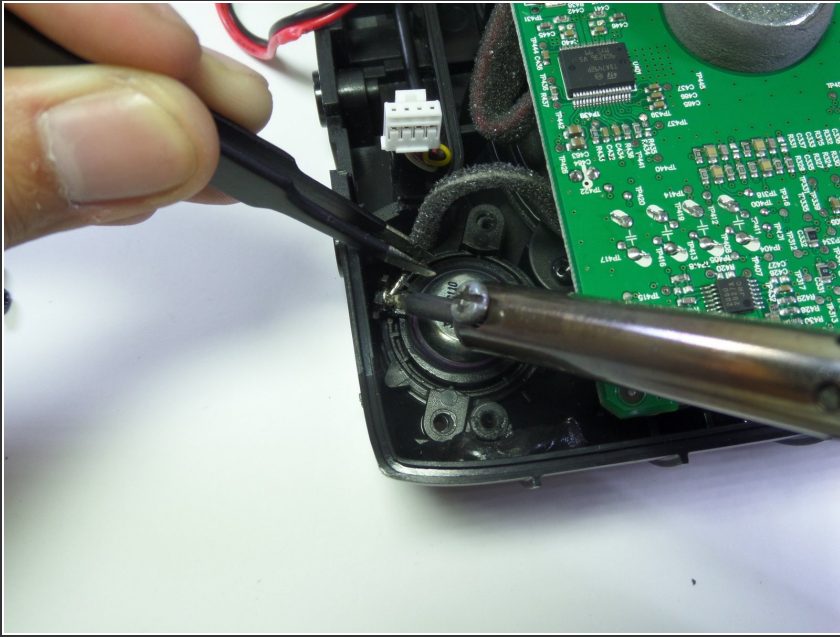
- Hold the tweeter speaker by the newly disconnected end using flat-head Tweezers.
- Simultaneously unsolder the thin silver wire using the Soldering Iron while lifting tweeter speaker away from the device using flat-head Tweezers.

Step 19



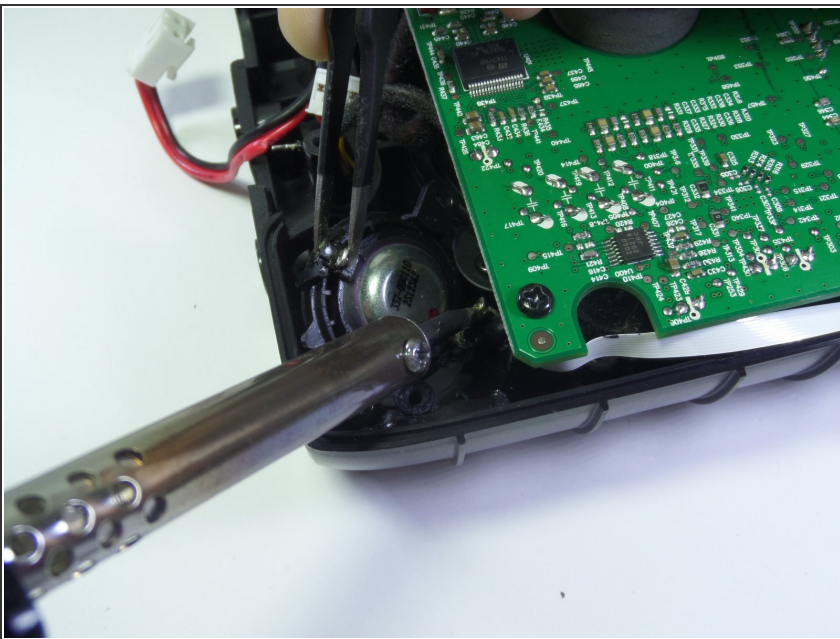
- Remove the two 7.0 mm screws with a Phillips #2.

Step 20



- Unsolder the black connecting wire using Soldering Iron.

Step 21



- Hold tweeter speaker by newly disconnected end using flat-head tweezers.
- Simultaneously unsolder the thin silver connecting wire using soldering iron while lifting tweeter speaker away from device using flat-head tweezers.

To reassemble your device, follow these instructions in reverse order.