



Logitech UE MegaBoom Speaker Replacement

A guide depicting how to remove and replace both speakers from a Logitech UE Megaboom.

Written By: Oscar Ambriz



INTRODUCTION

This a guide designed to assist you in removing and replacing both speakers present in your Logitech UE Megaboom speaker.

TOOLS:

- [Jimmy](#) (1)
 - [iFixit Opening Tools](#) (1)
 - [Tweezers](#) (1)
 - [Large Needle Nose Pliers](#) (1)
-

Step 1 — Outer Mesh



- Locate the ends of the speaker.
- Put a plastic opening tool in-between the rubber end and the mesh.
- Apply a upward force in order to pry open the end.
- Apply this procedure to the other side as well.


 Will take force.

 Using metal tools may permanently mar your device.

Step 2



- Take the Jimmy and pry up the rubber strip that has the volume buttons on it.

 You will hear clicks as it pries up, don't worry.

- Remove all the rubber you pried off.

Step 3



- Use tweezers to lift end of plastic retainer on edge of mesh out of its channel.
- Work the plastic retainer out of the channel all the way around the speaker.

 Be gentle, it is easy to damage the fabric.

- Repeat for other side.

Step 4 — Battery



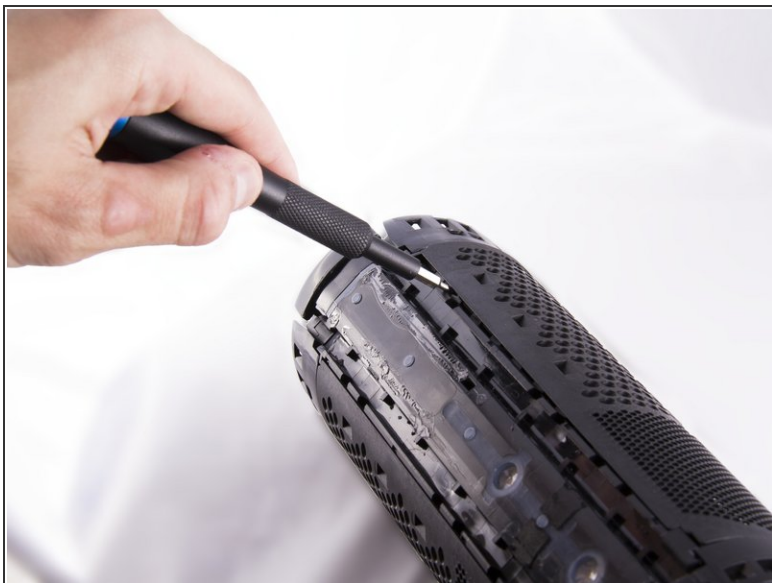
- Pull up on the top cover which contains the auxiliary and USB ports in order to remove it from the base.

Step 5



- Pull on white strip to remove battery.


Step 6 — Speaker



- Insert a opening tool between the grating and the body of the speaker
- Pry up allowing the tabs to pop out of place.
- ⓘ There will be an audible sound when the tabs have begun to pop out of place.
- Apply the same procedure to the grating covering the second speaker.

Step 7



- Use a opening tool to push the thin metal rod located on the side of the speaker out.
 - Using needle nose pliers grasp the rod and pull the rod out of the speaker until fully removed.
 - Remove the remaining three rods.
-  One is located on the same side and two are located on the other speaker.

Step 8



- Insert a opening tool between the speaker and the base
- Pry up allowing the speaker tabs to pop out of place
- Find and disconnect the wire from the motherboard by pulling in an upward motion.
- Apply the same procedure to the second speaker.

To reassemble your device, follow these instructions in reverse order.