



# Logitech V220 - Cordless Optical Mouse Scroll Wheel Replacement

This guide will instruct the reader to replace the scroll wheel spring on the Logitech V220 mouse.

Written By: Tyler Price



# INTRODUCTION

## Scope

The scope of this guide encompasses the Logitech V220 and its owners/users.



### TOOLS:

- [Phillips #0 Screwdriver](#) (1)
- [Tweezers](#) (1)
- [Metal Spudger](#) (1)




### PARTS:

- [Steel Compression Spring](#) (1)


## Step 1 — Removing the USB Wireless Receiver



 Wash your hands before replacing the battery to prevent debris getting into the mouse and damaging its internal components.

- Orient the mouse so you are viewing its base.
- Using your fingers, gently remove the USB wireless receiver by sliding it towards you.

 USB removal will result in the power switch to be in its **ON** position.

 Place the USB to the side for reassembly.

- With your fingertip, engage the power switch to its OFF position to ensure the mouse is not powered.

## Step 2 — Removing the Mouse Pads



- Locate the four mouse pads.
- Use the rectangular end of the metal spudger to get underneath each mouse pad, pry them up, and peel them off.
- ☑ Set the peeled mouse pads to the side sticky-side up to maintain its stickiness.

## Step 3 — Unscrewing the Mouse Housing Screws



- Locate the four #0 Phillips screws where the mouse pads previously were.
- Unscrew the four #0 Phillips screws with the Phillips #0 screwdriver.
- ☑ Set the screws to the side for reassembly.

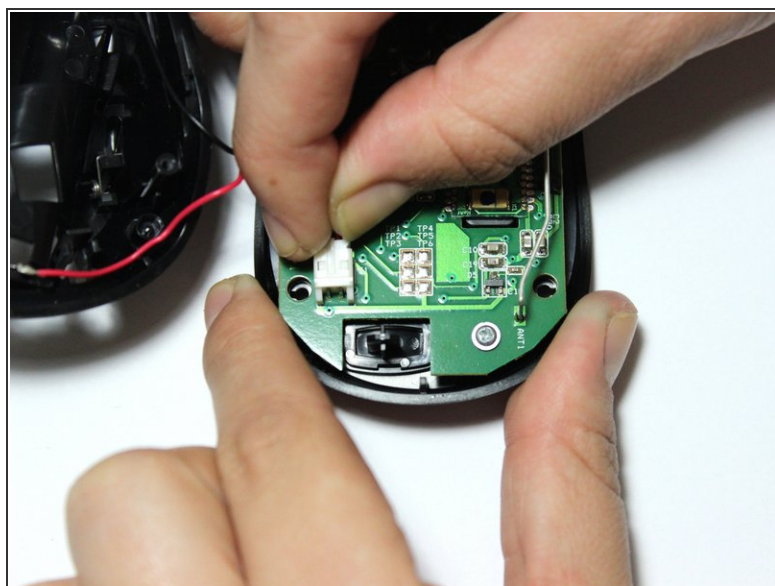
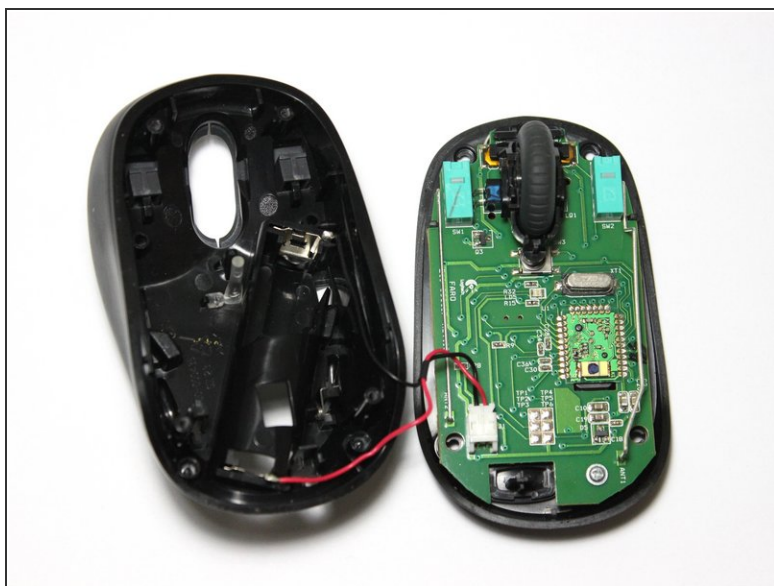
## Step 4 — Separating the Mouse Housing



- Once the housing screws are fully removed, slowly (and carefully) separate the top and bottom halves of the housing.
  - ⚠ Rapid separation of the housing halves may result in damaging the power cables (red and black wires) and molex (white plug).



## Step 5 — Detaching the Top Mouse Housing



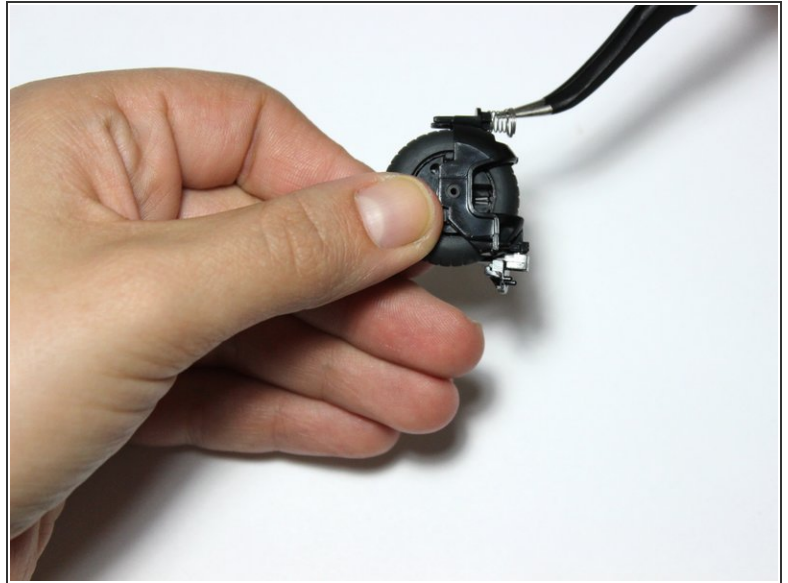
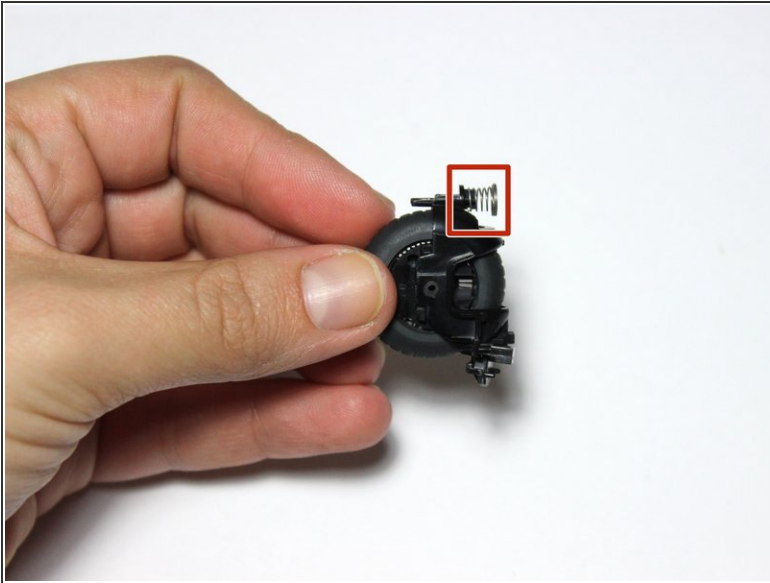
- Gently set the mouse halves down on a flat surface.
- Secure the base half with one hand.
- With thumb and forefinger, grab the end of the molex and pull it away from you until the molex is unplugged.
- ☑ Set the top mold half to the side for reassembly.

## Step 6 — Removing the Scroll Wheel



- Locate the one, scroll wheel, #0 Phillips screw near the very front edge of the mouse.
- Turn the mouse 90 degrees clockwise.
- While supporting the rear of the mouse base, unscrew the #0 Phillips scroll wheel screw.
  - ☑ Set the screw to the side for reassembly.
- Once the scroll wheel screw is fully removed, manually extract the scroll wheel and spring assembly.
  - ☑ Set the remains of the base of the mouse to the side.

## Step 7 — Removing and Replacing the Scroll Wheel Spring



- Locate the scroll wheel spring.
- Use the tweezers to gently remove the spring by slowly tugging the spring away from the scroll wheel assembly.
  - ☑ Set the spring aside for [proper disposal](#).
- Grab a new spring with the tweezers.
- Place the new spring on the peg extrusion of the assembly.
- Now you have a new scroll wheel spring!

To reassemble your device, follow these instructions in reverse order.