



# Logitech VX Nano Scroll Wheel Replacement

Learn how to disassemble your Logitech VX Nano wireless mouse to replace a faulty, broken, or dirty scroll wheel.

Written By: Carsten Frauenheim



## INTRODUCTION

The Logitech VX Nano has both smooth and ratcheting scroll wheel settings, and the mechanism that changes between the two can become worn out over time.

The ridges in the scroll wheel texture can also become filled with dust and grime during normal use. Use this guide to remove the scroll wheel to do a proper cleaning!



### TOOLS:

- [Phillips #00 Screwdriver](#) (1)
- [Spudger](#) (1)
- [Pick Tool](#) (1)



### PARTS:

- [Logitech VX Nano Replacement Scroll Wheel Assembly](#) (1)
- [Logitech VX Nano Replacement Feet](#) (1)

## Step 1 — Rear Battery Cover



- Remove the rear battery cover by pulling down on the provided slide tab. The cover will pop loose.
- Set cover aside.

## Step 2 — Batteries and Nano Receiver



- Remove the two AA batteries by pulling on the provided plastic tab. Set batteries aside.
- ☑ If the Nano Receiver is currently being stored in the mouse, remove by depressing the orange release button. Set aside.

## Step 3 — Battery Compartment Screws



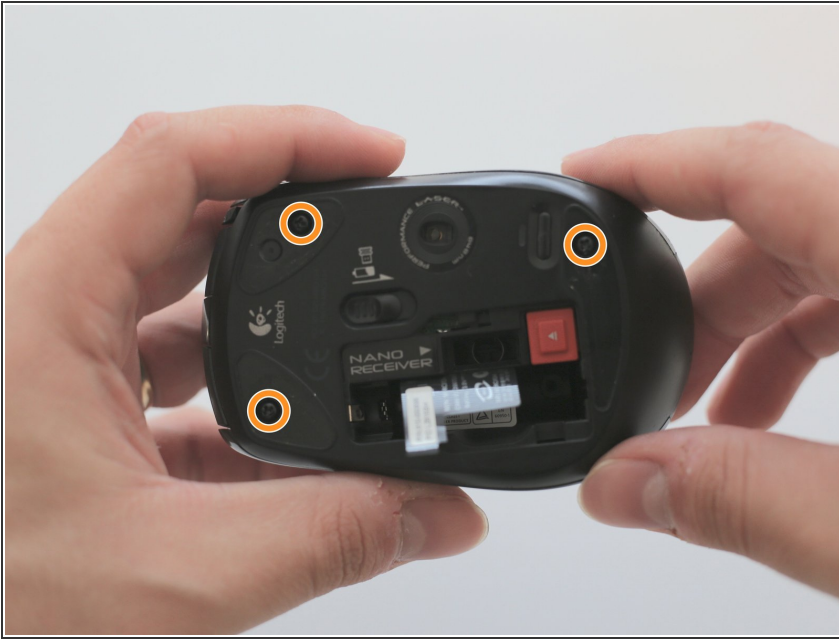
- Locate and remove the following screws from inside the battery compartment:
  - Two 6 mm Phillips #00 screws
- ⓘ When removing these two screws, it can be helpful to hold the plastic battery tab out of the way of your screwdriver.

## Step 4 — Adhesive Mouse Skates



- To access the remaining three retaining screws, the three skates on the bottom of the mouse need to be removed. They are attached to the bottom with adhesive.
- Using either the Pick Tool or the flat side of the Spudger, pry up the edge of one of the adhesive skates.
  - ⚠ Before using the Spudger to remove the entire skate, be sure that the tool is underneath the entire adhesive pad as to not split the adhesive in half during removal.
- Continue by pushing the Spudger between the adhesive back of the skate and the plastic mouse casing, slowly working the adhesive away from the case.
- Repeat this same process for the two additional skates.

## Step 5 — Bottom Case Screws



- Remove the following screws from underneath the now-removed adhesive skates on the back side of the mouse:
  - Three 6 mm Phillips #00 screws
- ⓘ The top and bottom plastic cases are now no longer connected. Keep the mouse on a level surface so you can carefully remove the upper shell in the next step.

## Step 6 — Top Plastic Shell



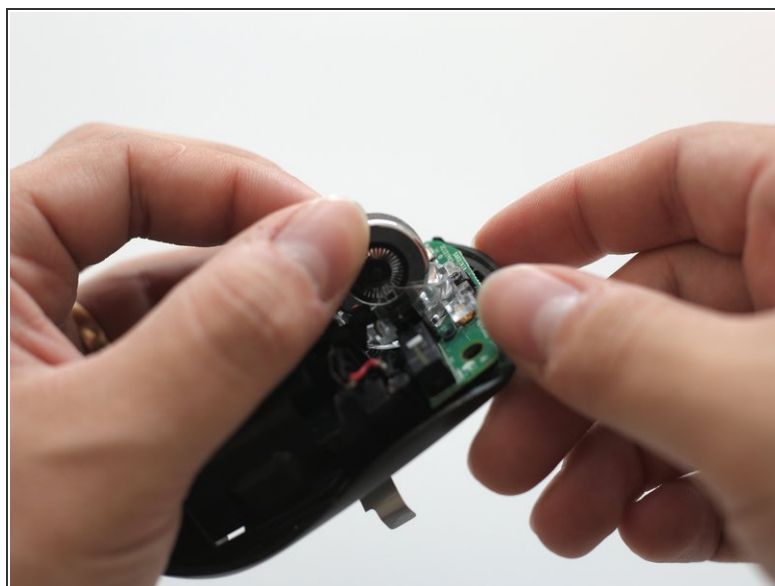
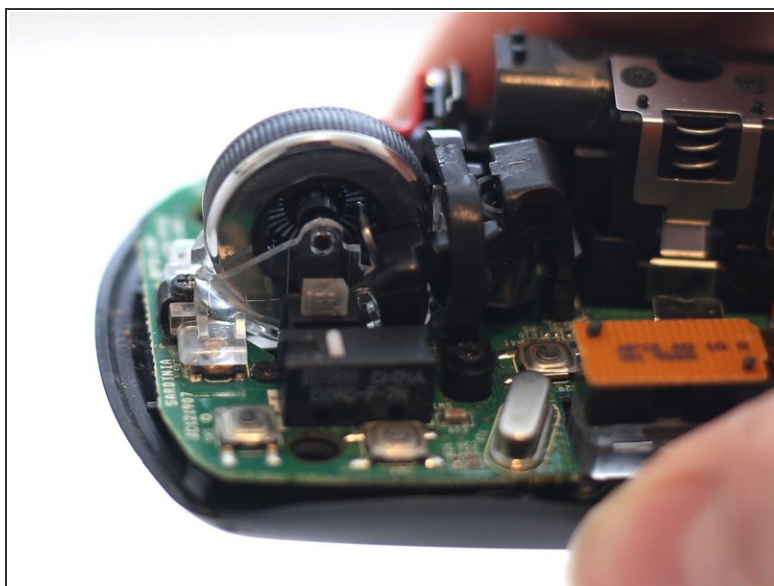
- Carefully separate the top plastic shell from the bottom piece. Set top shell aside.

## Step 7 — The Scroll Wheel Housing




- Using the pointed end of the Spudger, carefully pry the right side of the scroll wheel axle (the side closest to the right click button on the mouse) loose from its clear plastic housing.
- With the right side disconnected, repeat the same process on the left side while pulling upward on the scroll wheel, not letting the right side pop back into place.
- ⓘ This may take multiple tries. Don't lose hope! Use the pointed end of the Spudger to hold the clear plastic away from the scroll wheel as you pull up on it.

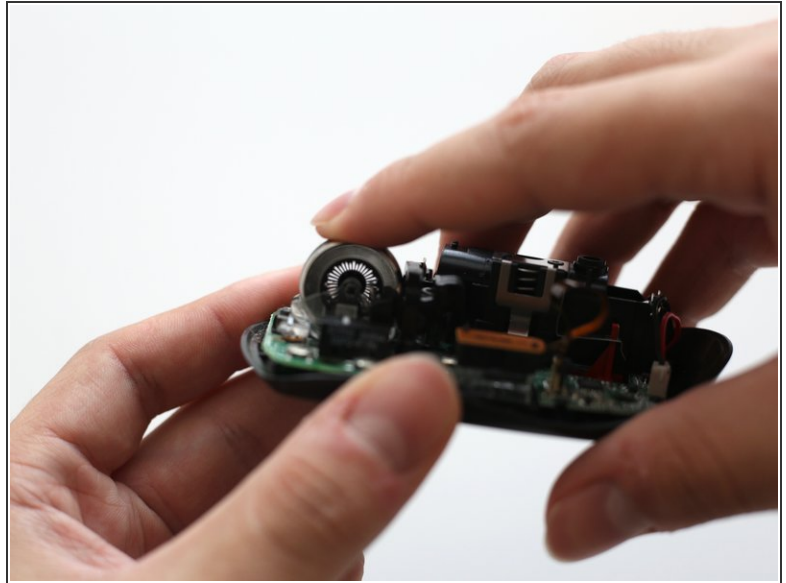
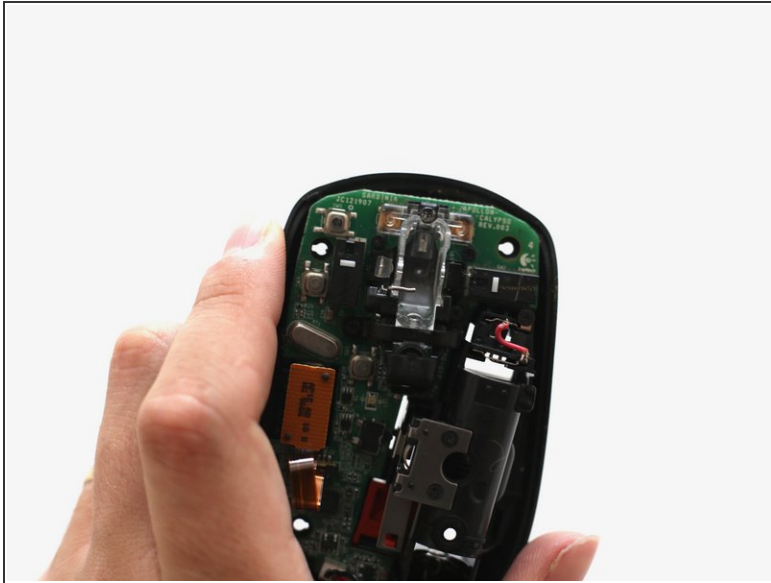
## Step 8 — The Scroll Wheel



- Once both sides of the scroll wheel are free from the clear plastic housing, pull the wheel up and away from the spring holding it still in place.

 These plastic pieces are brittle. Too much force will break the scroll wheel housing. Be careful!



## Step 9 — Final Touches



- Now that the scroll wheel is removed, a replacement can be installed.
- Alternatively, the existing scroll wheel can now be cleaned and reinstalled.
- Before reattaching the top plastic shell, spin the new (or cleaned) scroll wheel to ensure proper operation. Click in the scroll wheel to make sure the spring switches between smooth and ratcheted scrolling.

## Step 10 — Mouse Skates



-  Your Logitech VX Nano mouse skates could have been ruined during removal. If they aren't up to scuff, replacements can be ordered.
-  If your skates are in good condition, reinstall with a small dab of super glue.

To reassemble your device, follow Steps 1-8 in reverse order.