



Logitech Webcam Pro 9000 Camera Replacement

Should you be having difficulties with this camera, refer to this guide.

Written By: nieko



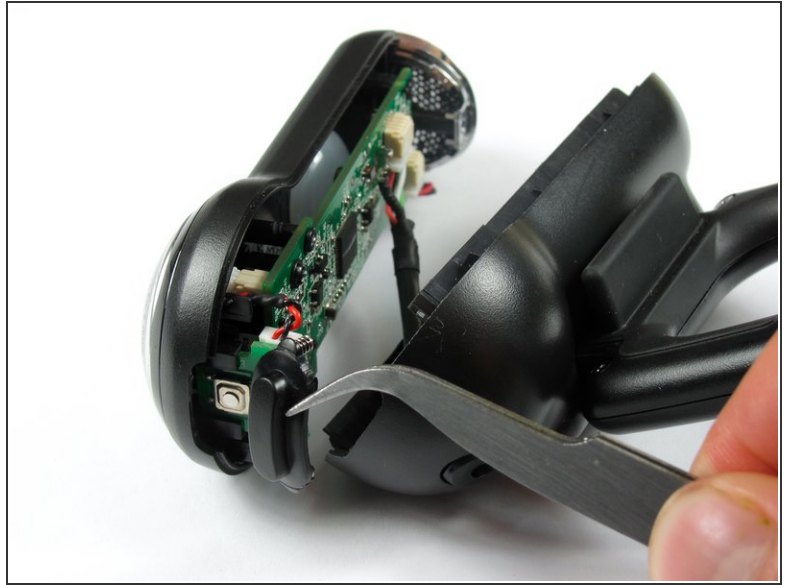
INTRODUCTION

This guide will lead you in desoldering the connections between the camera and the motherboard.

TOOLS:

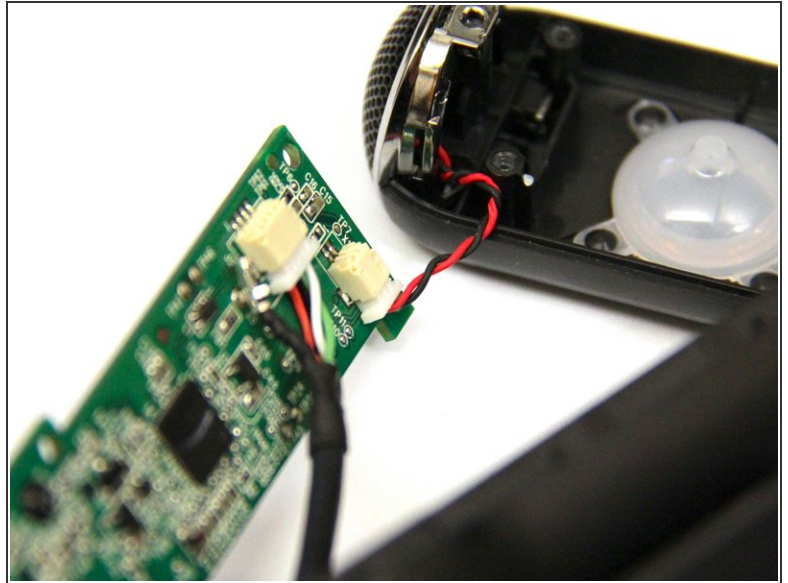
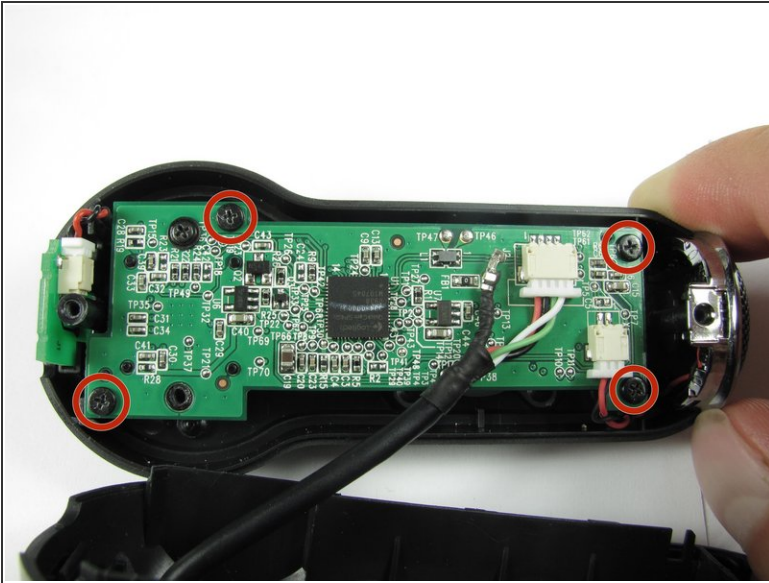
- [Soldering Workstation](#) (1)
 - [Solder](#) (1)
 - [Desoldering Braid](#) (1)
 - [Phillips #0 Screwdriver](#) (1)
-

Step 1 — Front and Back Cover



- Remove the two 8 mm Phillips #0 screws on the back cover.
- ⚠ The motherboard is attaching the two covers together, so don't separate them entirely just yet.
- ⓘ There is a button that loosens as the Phillips screws are removed. Don't be alarmed if it falls out.

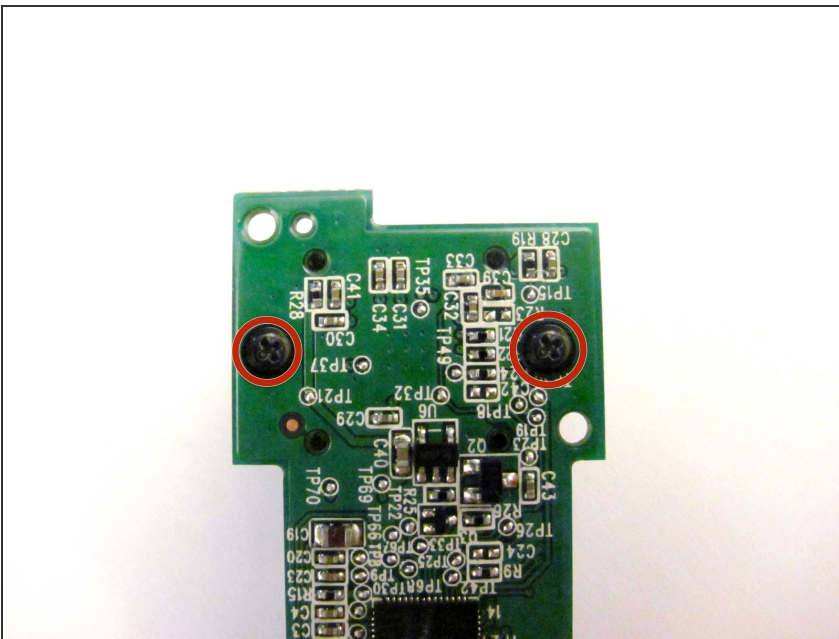
Step 2



- Remove the four 6mm Phillips#0 screws connecting the motherboard and front cover.

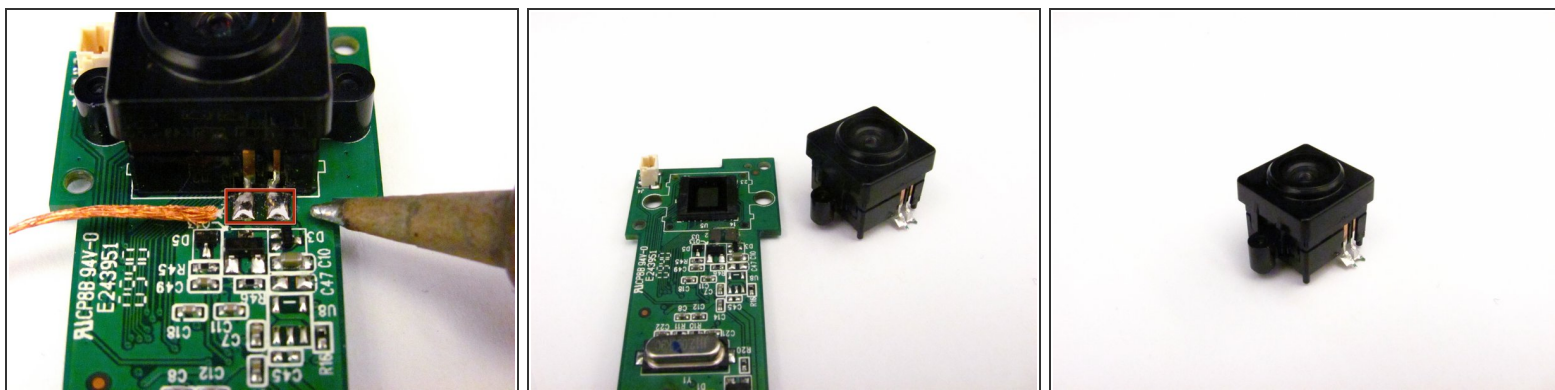
⚠ DO NOT detach the wire connecting the motherboard to the front cover.

Step 3 — Camera



- Remove the two 8mm Phillips#0 screws on the back of the motherboard.

Step 4



- Remove the camera from the motherboard by desoldering the two connections as shown.
- ⓘ Follow this [link](#) to learn how to properly solder and desolder your parts.

To reassemble your device, follow these instructions in reverse order.