



Logitech Webcam Pro 9000 USB Cable Replacement

Replace your broken USB cable to connect your webcam to your computer.

Written By: Cory Davis



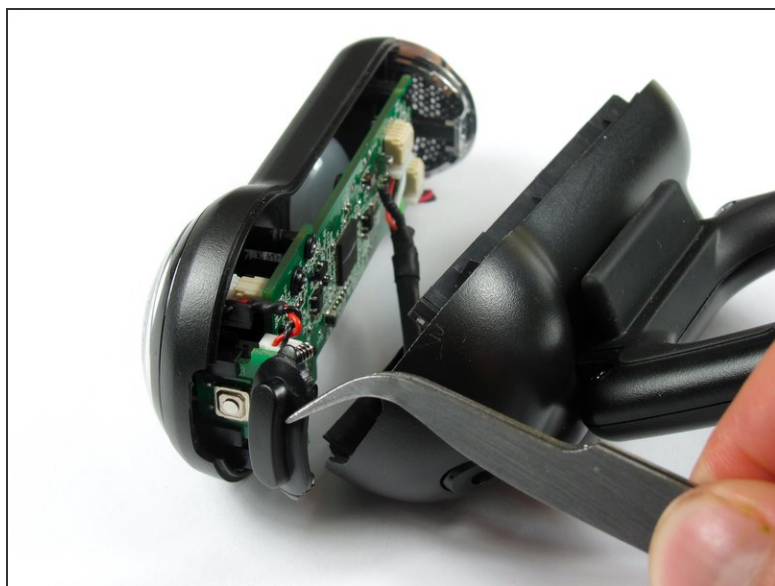
INTRODUCTION

Follow this guide to remove and replace the USB cable of your webcam. Knowledge of soldering is necessary in order to install a new cable.

TOOLS:

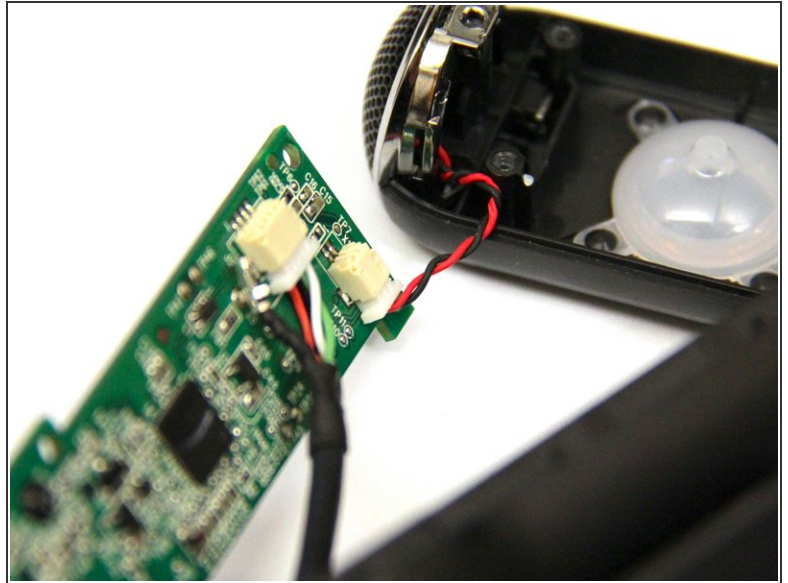
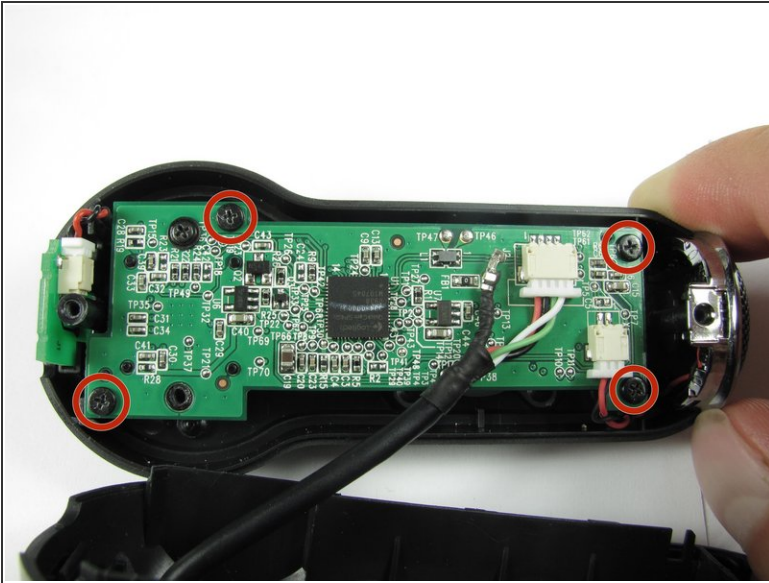
- [Spudger](#) (1)
 - [Soldering Workstation](#) (1)
 - [Solder](#) (1)
 - [Desoldering Braid](#) (1)
 - [Tweezers](#) (1)
 - [Phillips #0 Screwdriver](#) (1)
-

Step 1 — Front and Back Cover



- Remove the two 8 mm Phillips #0 screws on the back cover.
- ⚠ The motherboard is attaching the two covers together, so don't separate them entirely just yet.
- ⓘ There is a button that loosens as the Phillips screws are removed. Don't be alarmed if it falls out.

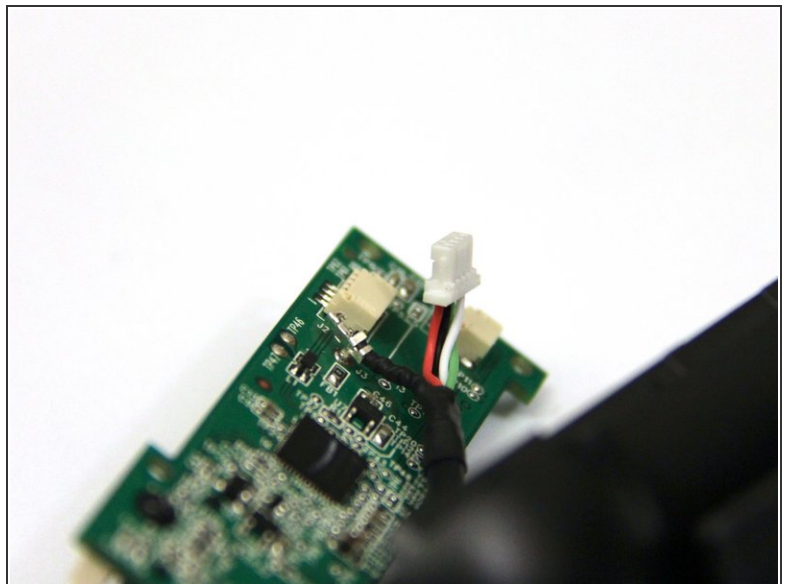
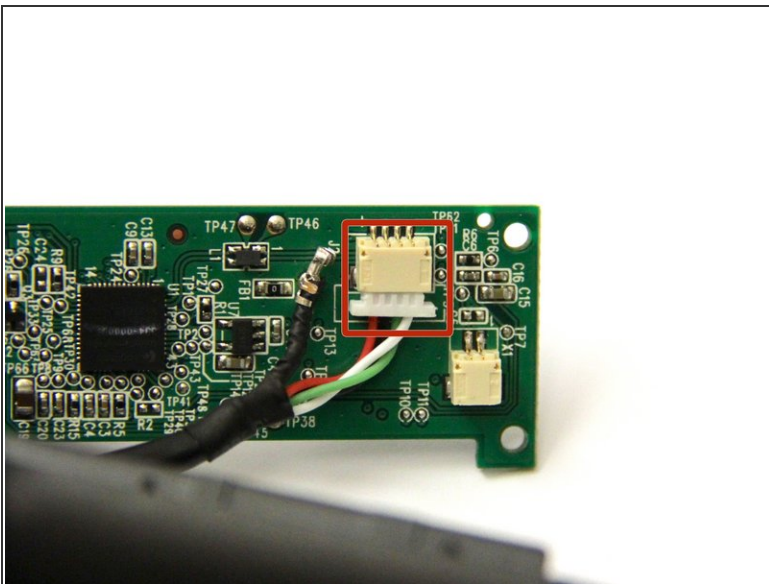
Step 2



- Remove the four 6mm Phillips#0 screws connecting the motherboard and front cover.

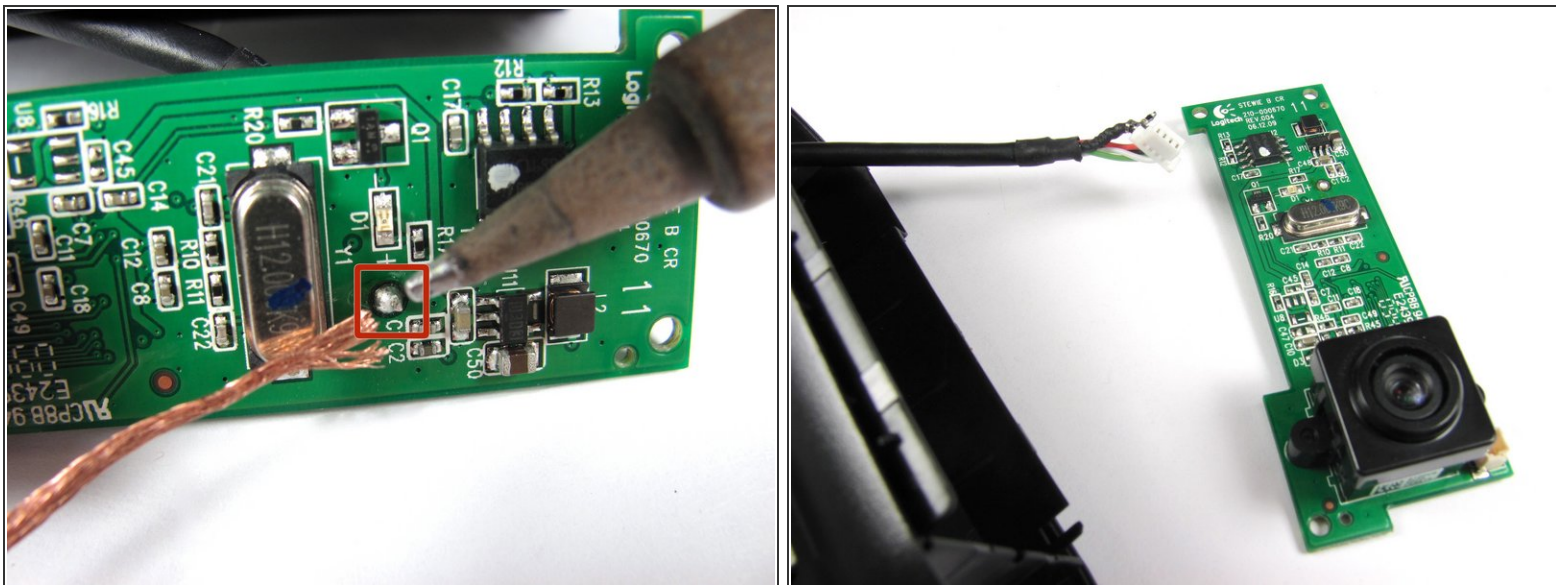
⚠ DO NOT detach the wire connecting the motherboard to the front cover.

Step 3 — USB Connection



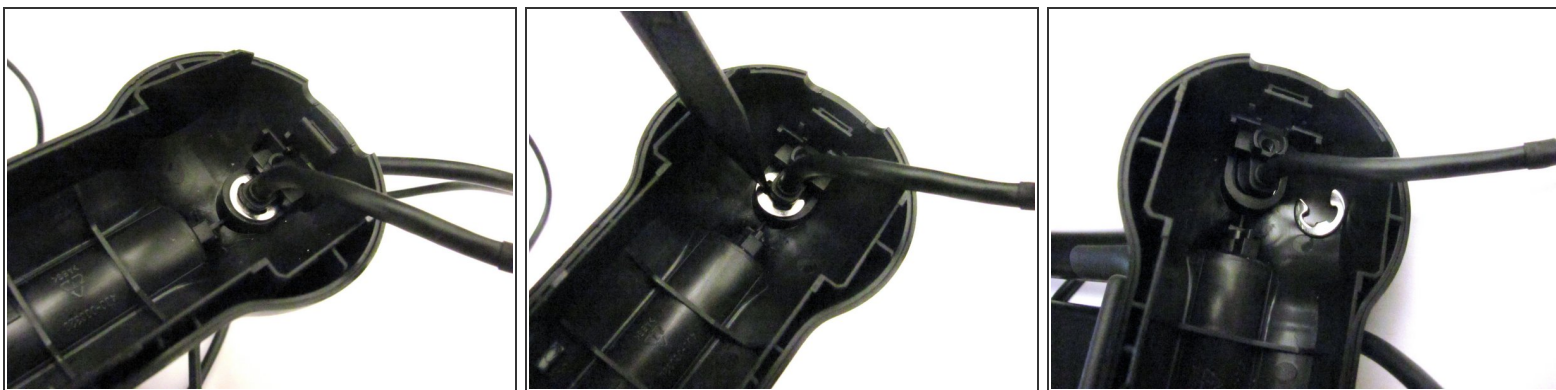
- Grasp the white wire connector on the back of the motherboard to remove the USB cable.
- Wiggle the connector back and forth to remove it from the socket.

Step 4



- Follow this [link](#) to learn how to properly solder and desolder your parts.

Step 5 — USB Cable



- Wedge the pointy end of the spudger between the sliver E-ring and USB attachment base to extract the E-ring.

Step 6



- Feed the now free end of the USB cable through the back cover.

To reassemble your device, follow these instructions in reverse order.