



# Longboard or Skateboard Truck Maintenance

This guide will teach the basics of how to clean, and maintain longboard/skateboard trucks.

Written By: Dominic Turano



## INTRODUCTION

Replacing the trucks of your skateboard is simple, and you only need the ability to use simple tools! Follow this easy step-by-step instruction to get new trucks on your board. For this installation you will need a phillips or flathead screwdriver. Be sure when you are removing and reinstalling hardware that you pay close attention to individual components. Missing or improperly installed parts could lead to injury of yourself or others. This installation guide will have you ripping up the roads in 20 minutes or less!

---

### TOOLS:

- [Phillips #2 Screwdriver](#) (1)
  - [Slip Joint Pliers](#) (1)
-



## Step 1 — Longboard or Skateboard Truck Maintenance



- Use a Phillips/flat head screw driver, along with a skate tool or set of pliers, to loosen the nuts which fasten the trucks to the deck.

## Step 2



- Use your fingers to fully loosen and remove the nuts from the bolts.
- ⓘ Nuts are small and easy to lose track of.

### Step 3



- Use your hands to remove the trucks from the deck.
- ☑ Make sure the kingpin is facing outward, If the kingpin is not properly reinstalled, the trucks will fail to perform properly.

### Step 4



- Remove the truck raiser if applicable.



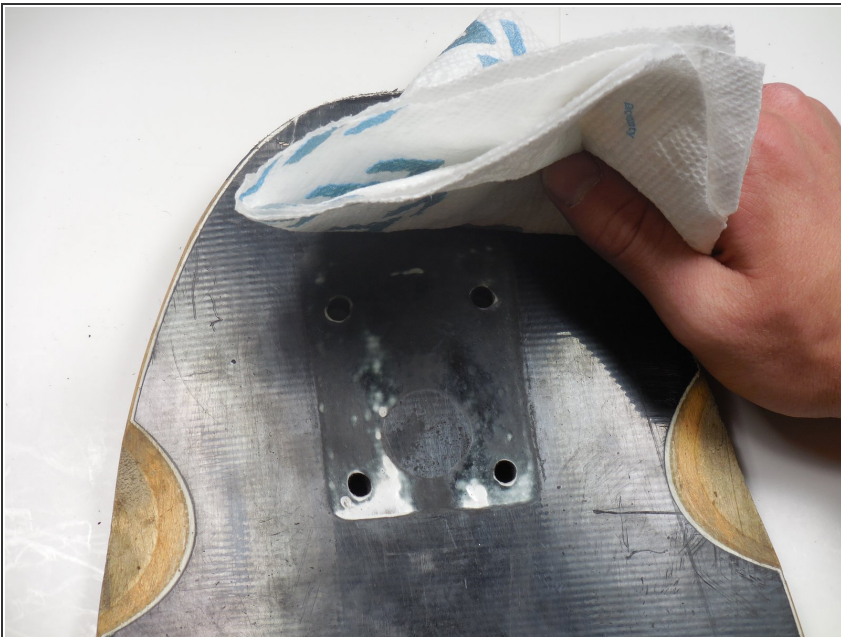
## Step 5



- Remove the bolts from the factory drilled holes on the deck.

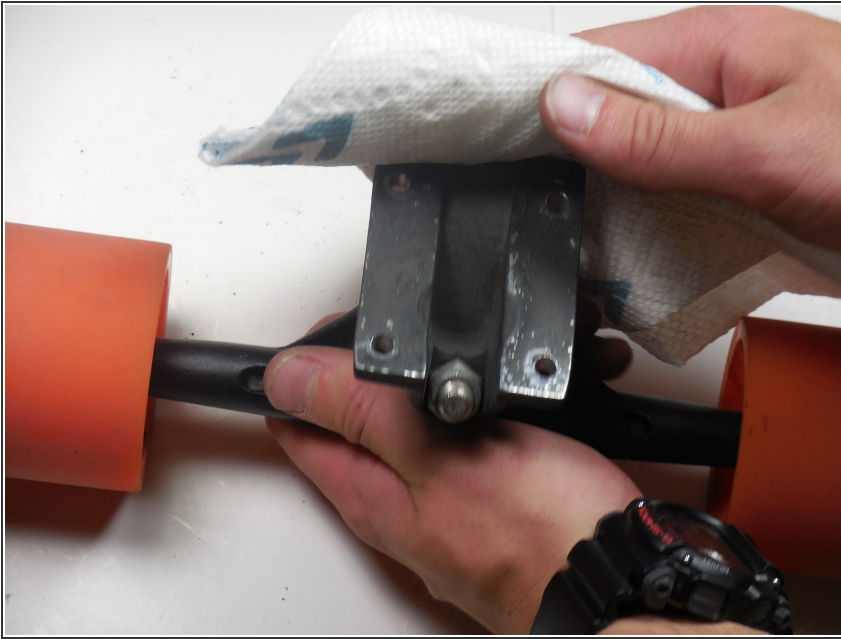
**i** Note that the bolts are small and easy to lose track of.

## Step 6



- Clean the deck with a moist cloth or cleaning solution.

## Step 7



- Clean the trucks with a moist cloth or cleaning solution.

## Step 8



- Clean the hardware by either soaking it in cleaning solution, or by manually cleaning it with a moist cloth.

## Step 9



- Repeat steps 1-7 with the second truck.



## Step 10



- After re-installation, check and confirm that all the bolts and nuts are tight. The bolts should be slightly submerged in the wood of the deck
- ⚠ Over tightening the bolts can cause them to strip.
- ⚠ Failure to tighten the bolts and nuts properly may lead to improper performance.

## Step 11



- After re-installing the trucks, check and confirm the kingpin is facing outward.
- ⚠ Failure to do this will cause the longboard's functions to be inverted, which may lead to personal injury.



Now you've completed the guide 'How to clean and maintain skate/longboard trucks. Your longboard should look like the picture. Before riding, as a final precaution, make sure every piece is securely fastened and the trucks are facing the correct way. Have fun and always wear a helmet!