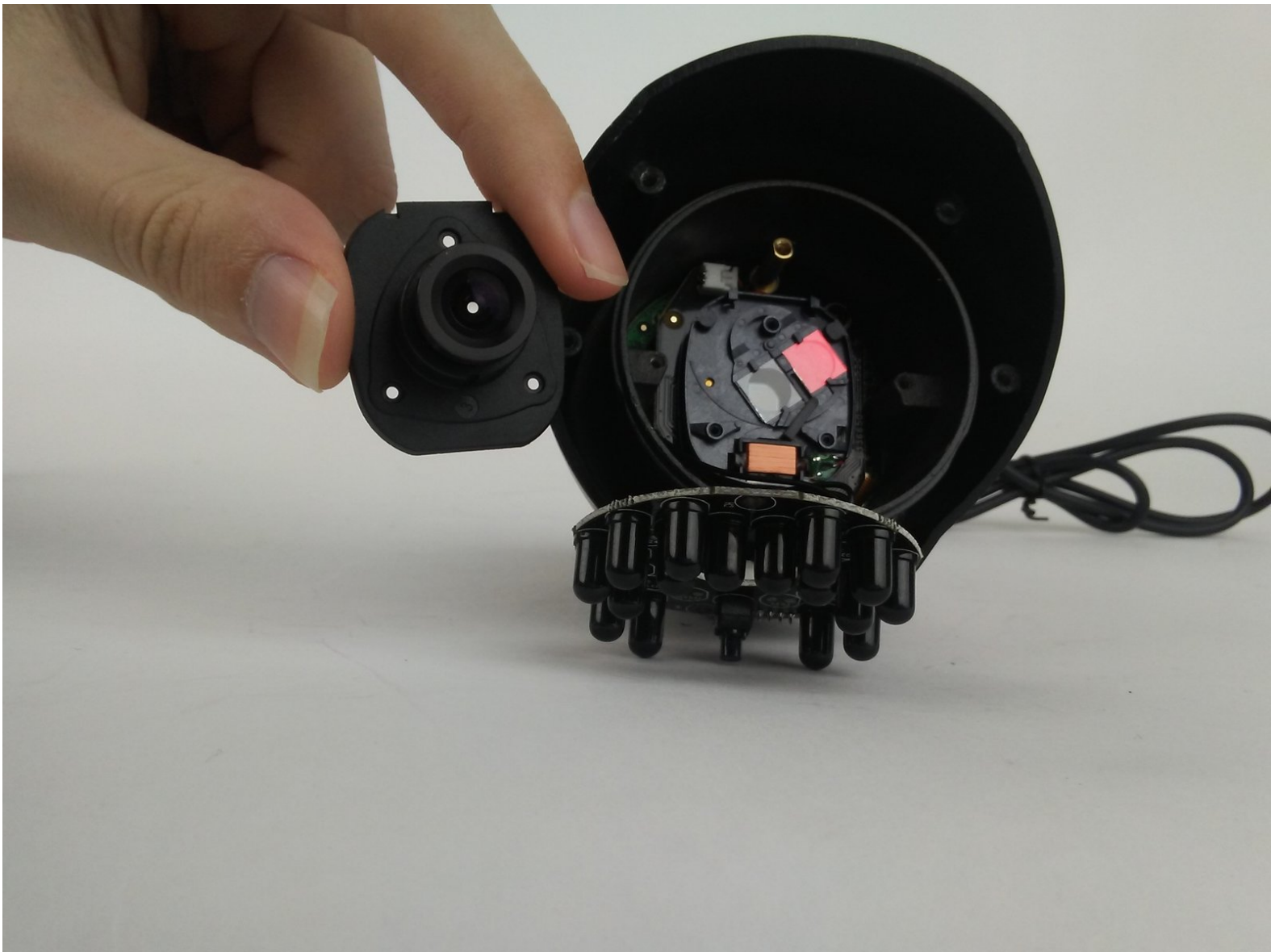




Lorex LW2742 Lens Replacement

Replacing the lens on your Lorex LW2742 security camera.

Written By: Alex Kusmierz



INTRODUCTION

Is there a scratch, chip, or crack in your lens causing your image to be blurry? Replacing the lens may solve this problem.

TOOLS:

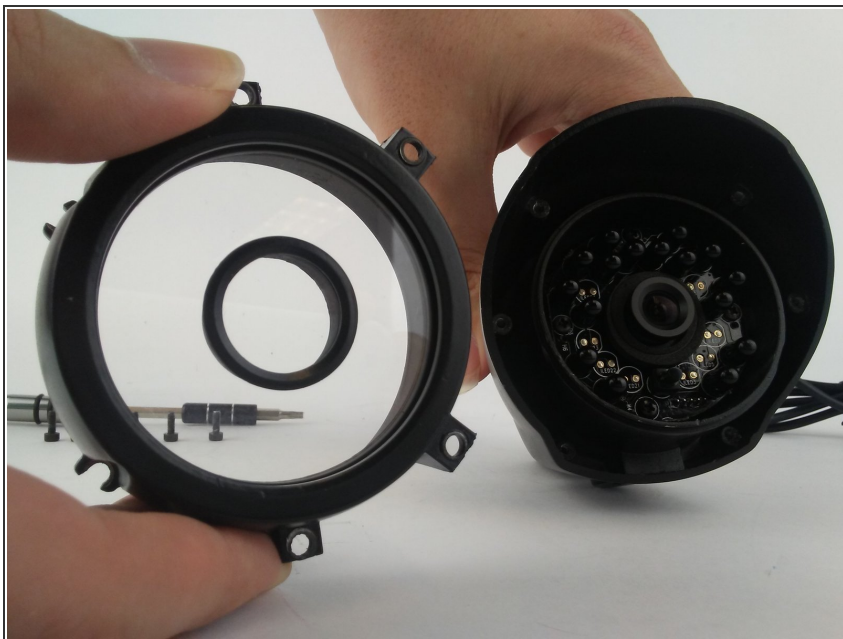
- [Tweezers](#) (1)
 - [T10 Torx Screwdriver](#) (1)
 - [Phillips #000 Screwdriver](#) (1)
 - [Phillips #0 Screwdriver](#) (1)
 - [Phillips #1 Screwdriver](#) (1)
-

Step 1 — Lens



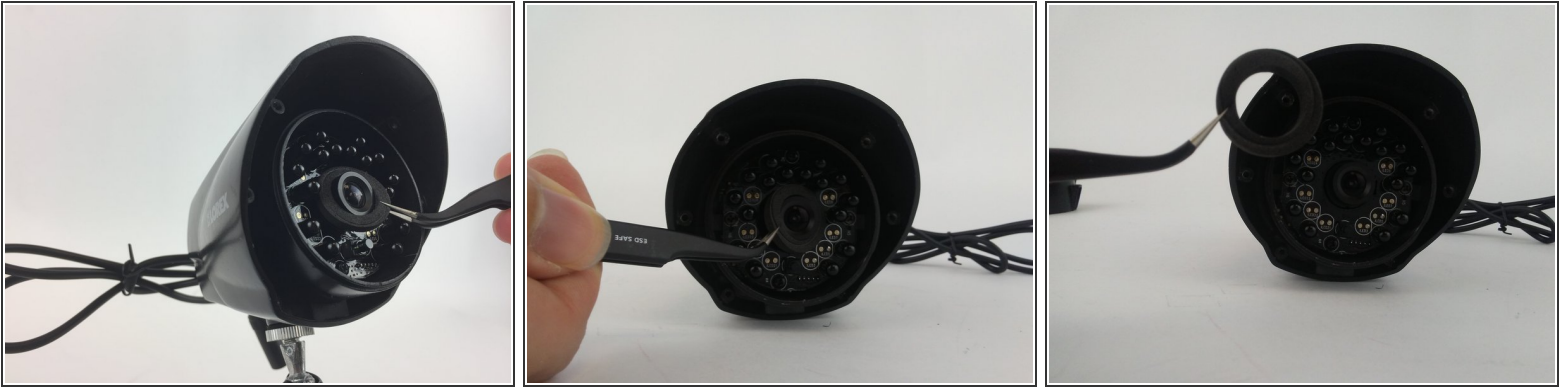
- Remove the six 10mm Torx T10 screws on the camera face.

Step 2




- Remove the exterior lens cover.

Step 3




- Remove the foam ring around the lens with tweezers.

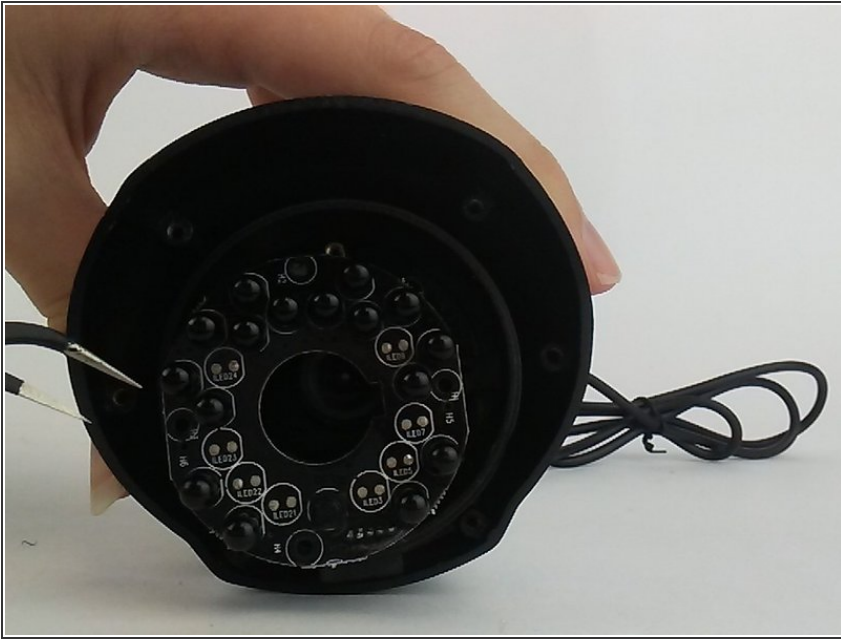
 Be aware, the electronic components of the LED board may be compromised if you use your fingers instead of tweezers for this step.

Step 4



- Remove the two 5mm Phillips #1 screws.
- Remove the two 8mm Phillips #0 screws.
-  When reassembling, tighten the top and bottom 5mm screws first, followed by the left and right 8mm screws.

Step 5



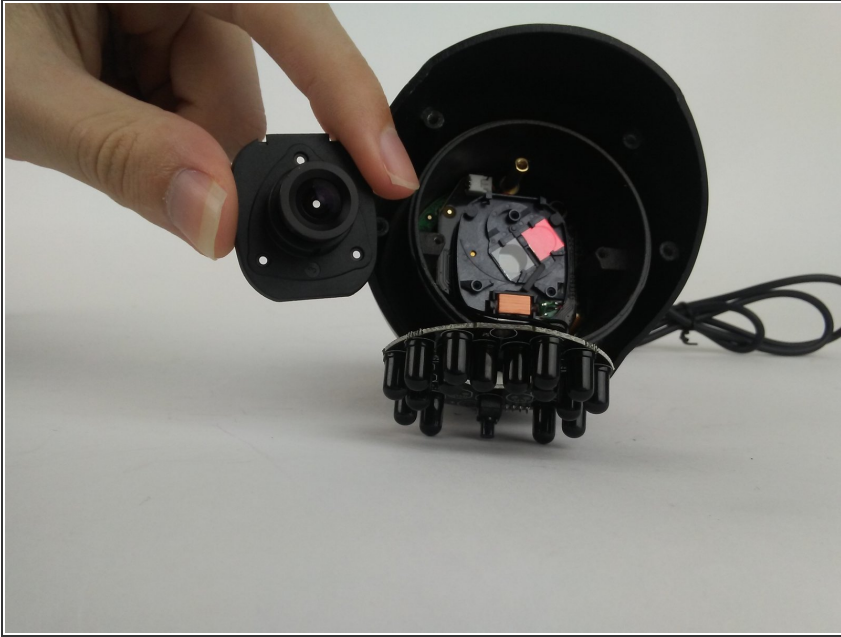
- Remove the LED board with tweezers.
- ⓘ It is unnecessary to unplug the LED board from internal components for lens replacement.

Step 6



- Use the Phillips #000 to remove the three 3mm screws on the face of the camera lens

Step 7



- Remove the camera lens.
- ⓘ After replacing camera lens and before reassembly it is encouraged to clean new lens surface with a microfiber lens cleaning cloth

To reassemble your device, follow these instructions in reverse order.