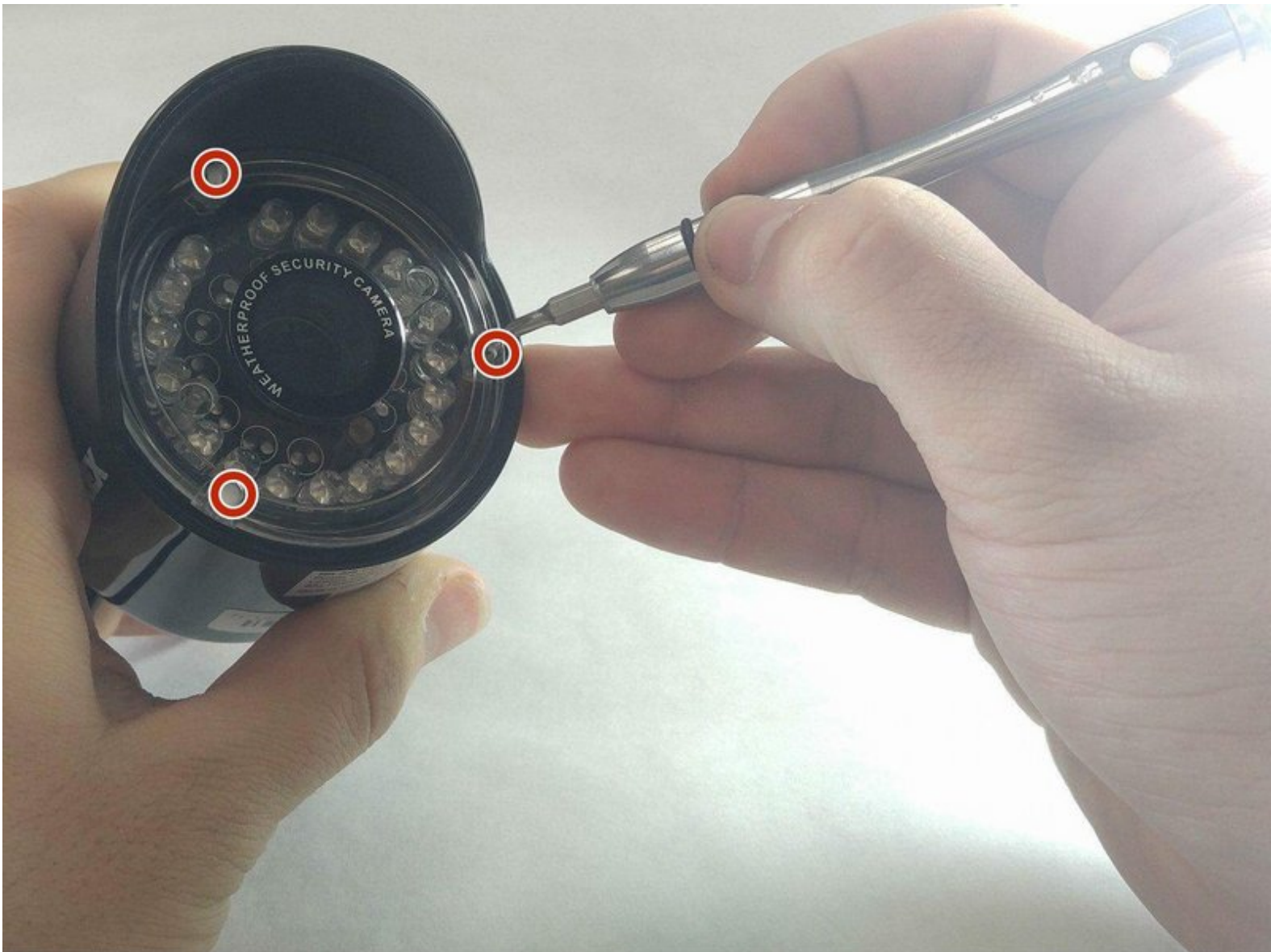




Lorex MC6950 Camera Lens Replacement

This guide shows how to replace the camera lens on the Lorex MC6950.

Written By: Elijah Conlin



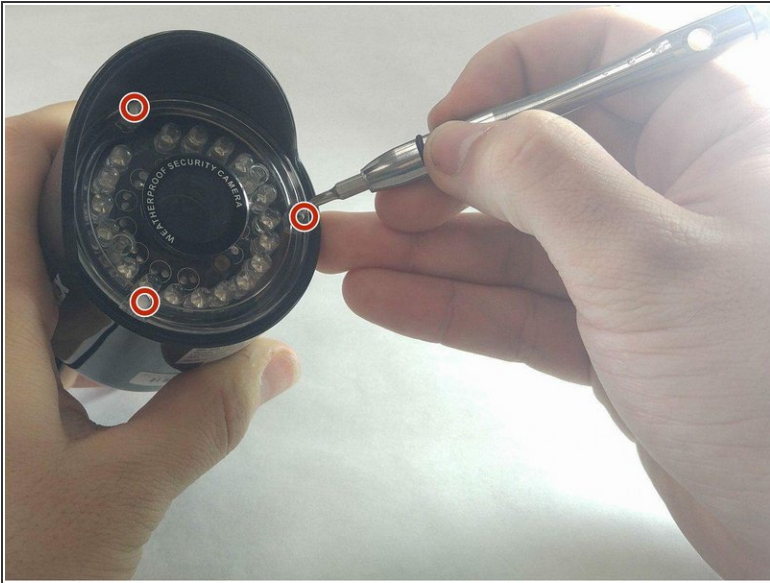
INTRODUCTION

The lens of the Lorex MC 6950 is to be replaced. This will require taking the camera apart and removing the circuit board from it's LED containment. To do this, a metal spudger and a #J0 screwdriver will be needed.

TOOLS:

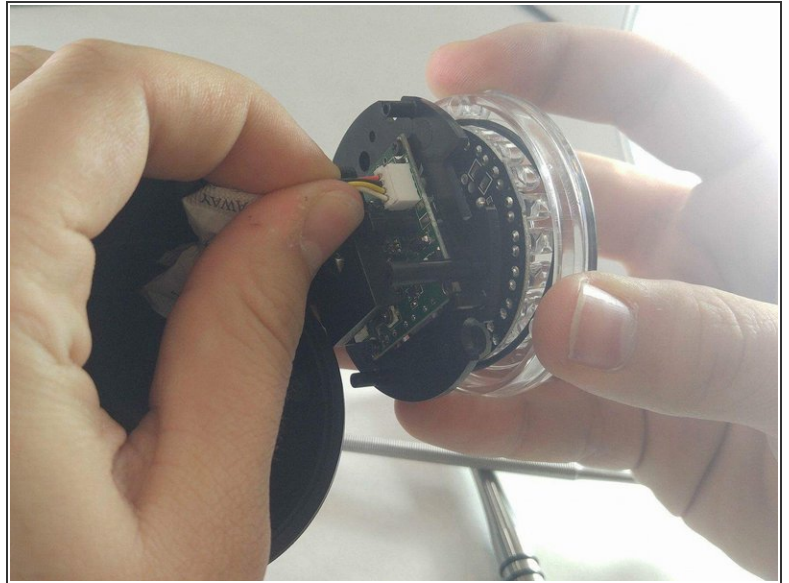
- [Metal Spudger](#) (1)
 - [JIS #0 Screwdriver](#) (1)
-

Step 1 — Camera Lens



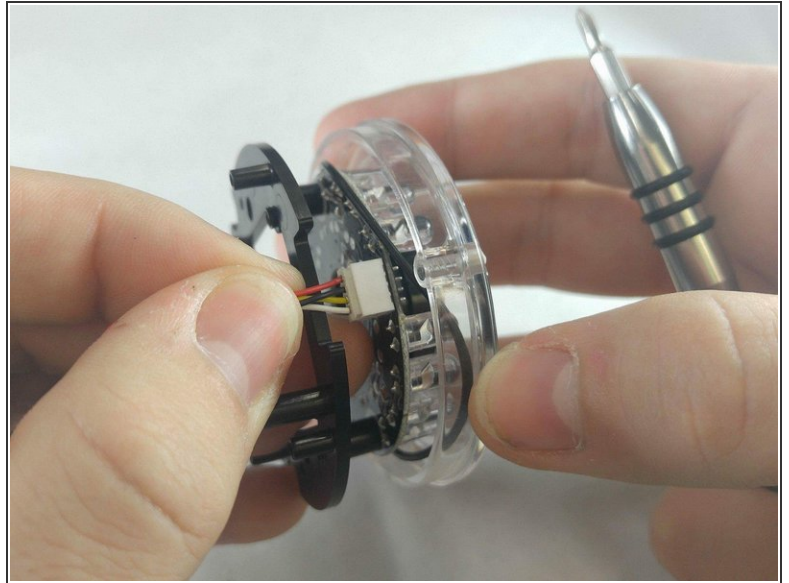
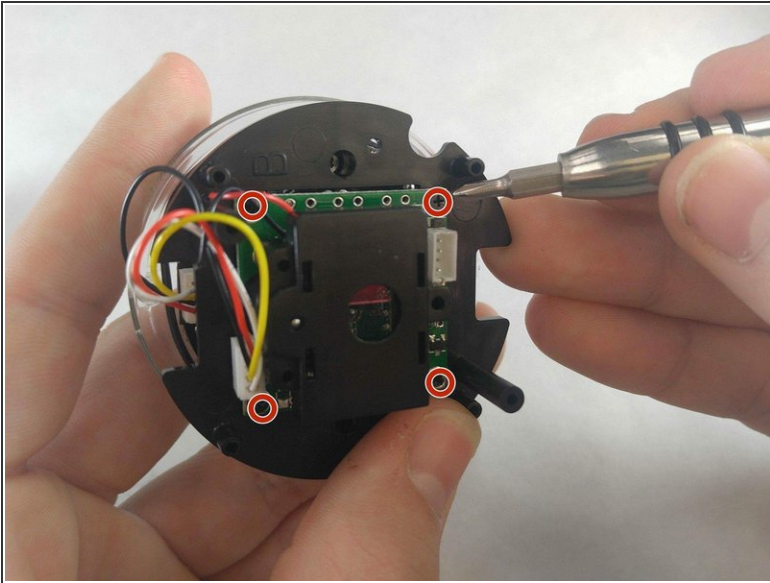
- To remove a bad lens, you must begin by removing the three screw caps and the 15mm JIS 0 screws associated with them located on the plastic containment shell that the camera is in.

Step 2



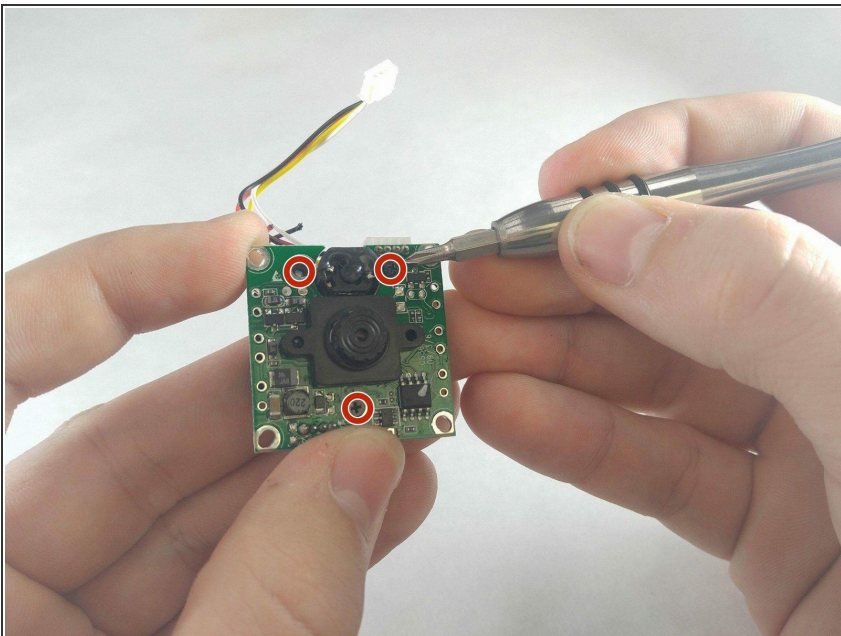
- Next, the camera must be removed. A metal spudger will be useful to pry this out as it is sealed inside the outer containment shell.
- Once the camera is removed, remove the wires from the outer containment shell.
- Be careful. The metal spudger could damage the camera if not handled with care.

Step 3



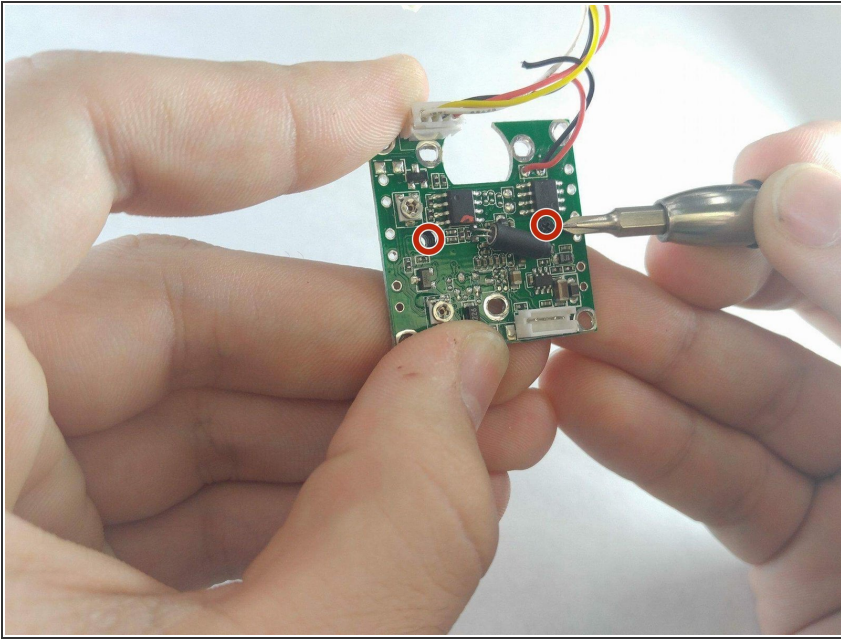
- With the camera in hand, the circuit board must be separated from the LED containment shell. There is a 5mm JIS 0 screw at every corner of the circuit board.
- The wires attaching the circuit board to the shell should be removed as well.

Step 4



- Now the motor housing must be removed from the circuit board first as it is in the way of the screws associated with the lens. There are three 5mm JIS 0 screws located on the lens side of the circuit board to remove the motor.

Step 5



- The lens has two 5 mm JIS 0 screws located under the motor's previous location. Once these are removed, the lens can be replaced.

To reassemble your device, follow these instructions in reverse order.