



Lumen Projector Bulb Replacement

This guide will provide a step-by-step procedure to replace a projector light bulb and clean the surrounding area.

Written By: Desiree Benitez



INTRODUCTION

This guide will provide a step-by-step process on how to safely remove and replace a light bulb for a Ben-Q projector. In the process of this removal, it will be demonstrated how to clean the area of any dust and how to recycle the waste material- old light bulb.



TOOLS:

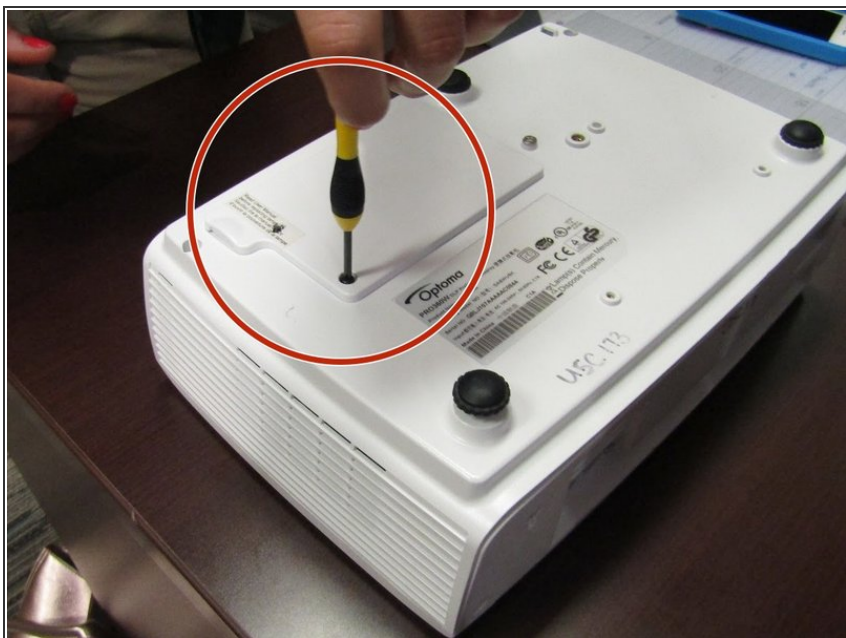
- [Phillips #0 Screwdriver](#) (1)
-

Step 1 — Unplug projector



- Unplug the projector from the wall outlet to allow for the light bulb to cool for at least 30 minutes.

Step 2



- On the bottom side of the projector, locate and unscrew the back cover using a Philip's head screwdriver.

Step 3



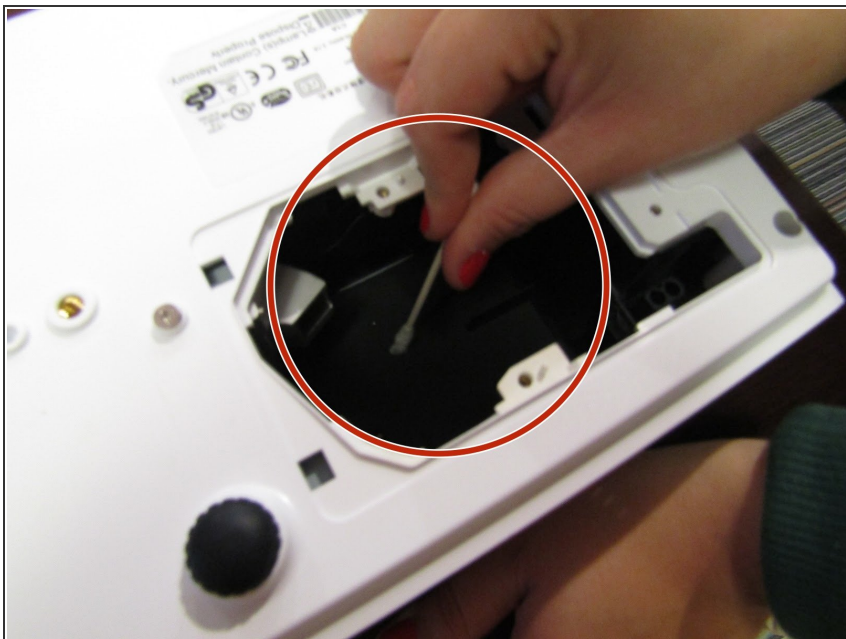
- Unscrew the bulb screws on either side of the silver plate.

Step 4



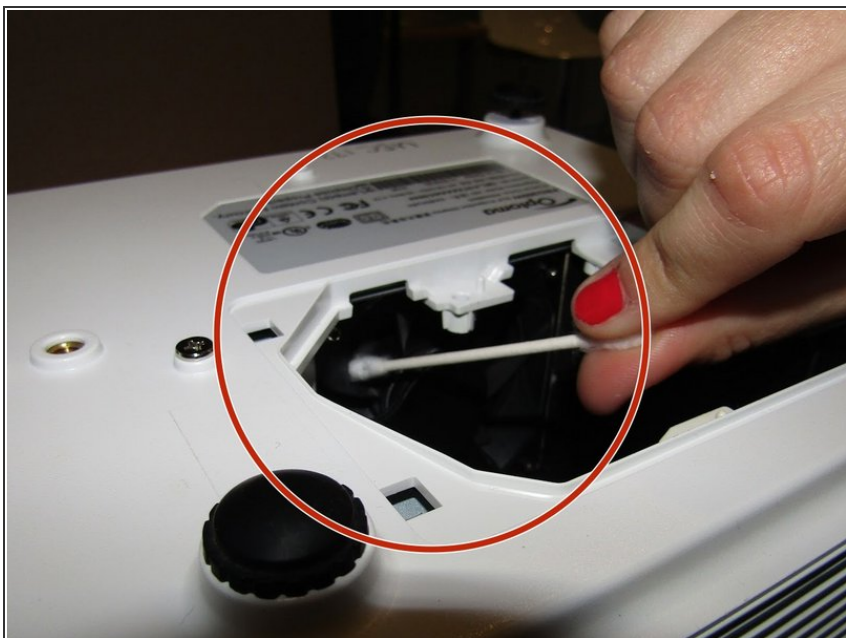
- Remove the light bulb from the projector by lifting the silver handle and pulling up.

Step 5



- Clean the now vacant area where the light bulb once belonged of dust and particles using a Q-tip.

Step 6



- Use a new Q-tip to clean the fan blades and hole in which the light enters.

Step 7



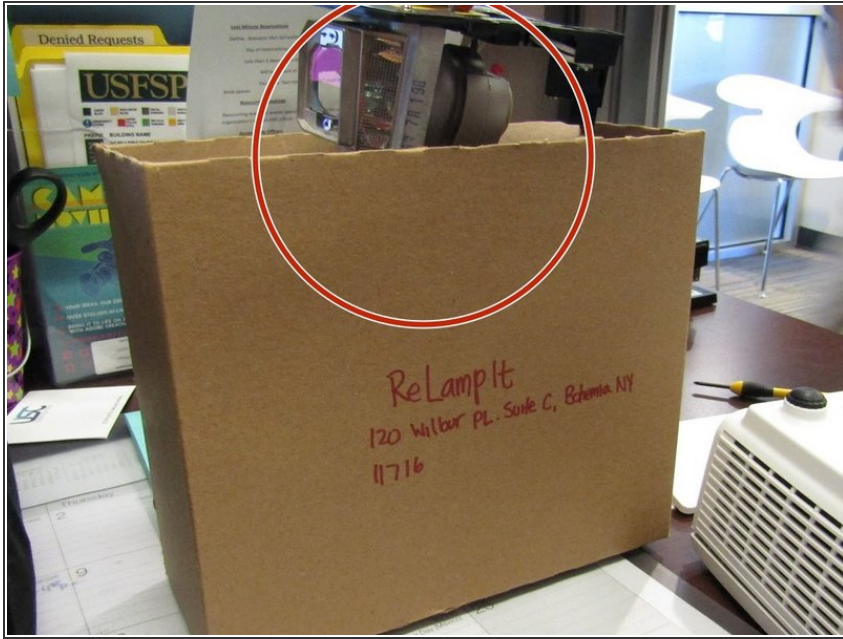
- Open and remove the new light bulb from its box with clean hands to prevent from getting the bulb dirty.

Step 8



- Place the new bulb inside making sure to align the bulb towards the light hole and the wire connector towards the wire receiver.

Step 9



- Dispose of the bulb by sending it to a recycling center.

To reassemble your device, follow these instructions in reverse order.