



Lytro Camera First Generation Repair

We will be taking a Lytro Camera apart until we get the the lense cap. We will be replacing the lense cap and creating a guide to help you through it.

Written By: Jeremiah Killam-Hull



INTRODUCTION

Hey, we are a group of students from Central Coast New Tech High working on our iFixit project.



TOOLS:

- [Phillips #0 Screwdriver](#) (1)
- [iFixit Opening Tools](#) (1)
- [Metal Spudger](#) (1)
- [Socket Set](#) (1)
- [Tweezers](#) (1)



PARTS:

- [New Camera Lense](#) (1)

Step 1 — Lytro Camera First Generation Lens



- Pull the top off using your hands or the plastic opening tool.

Step 2



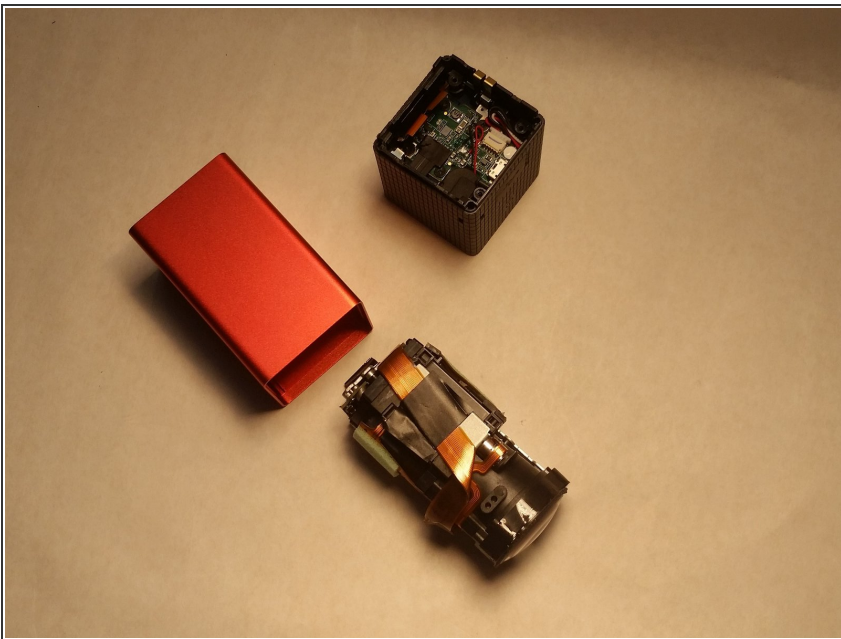
- Unscrew the four screws(7.1cm) seen after taking the top off.

Step 3



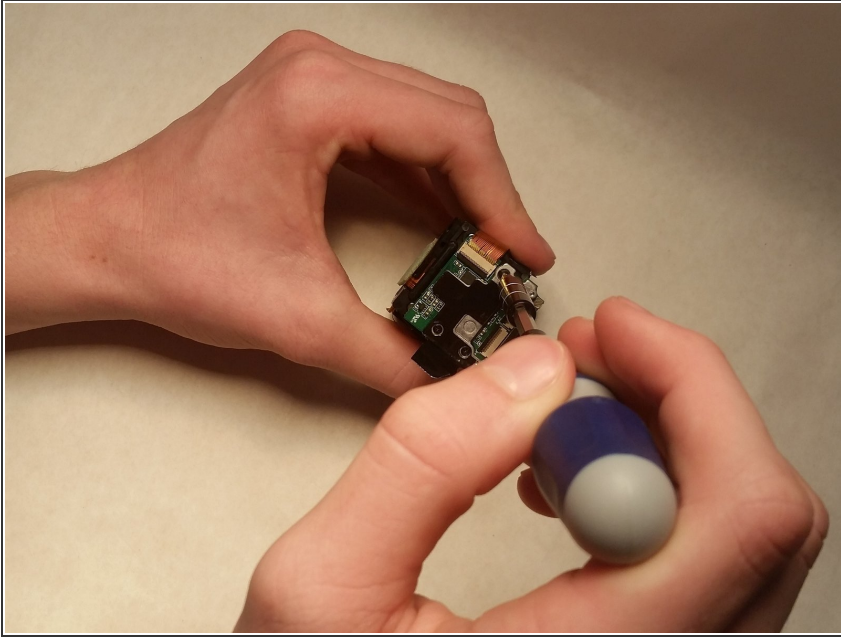
- Pry that silver piece off that you just took the four screws out of.

Step 4



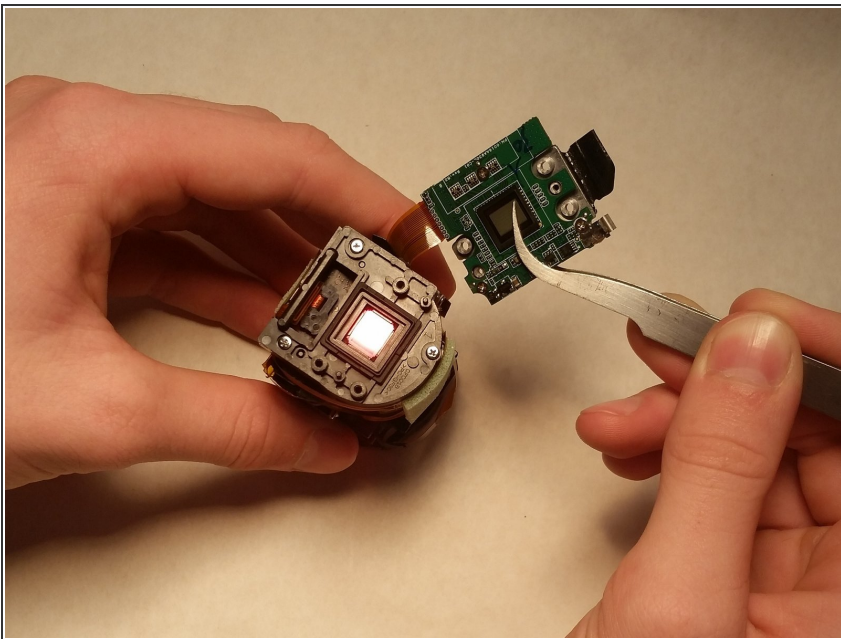
- Take the camera out of the red part. You should have 3 piece not including the top.

Step 5



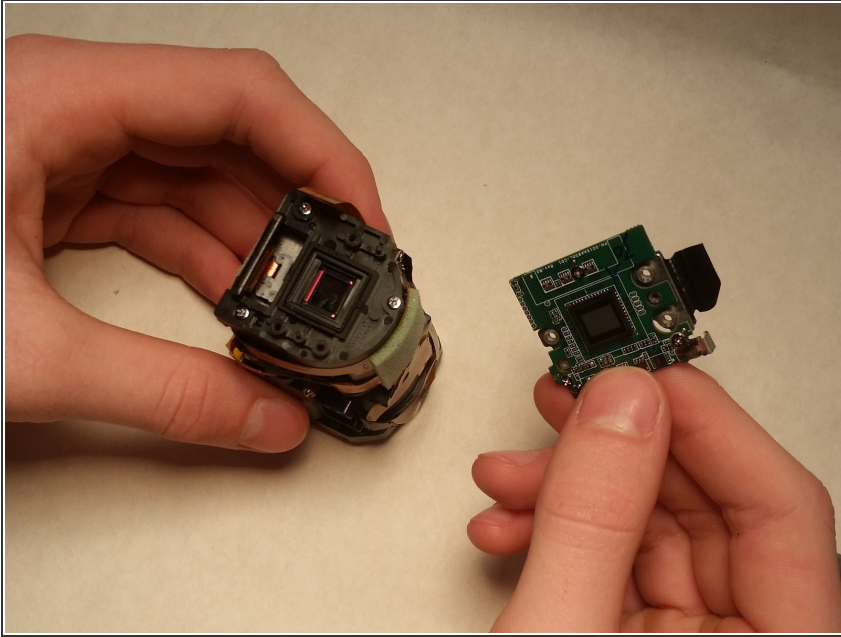
- Take the 3 screws(.5) out of the middle piece.

Step 6



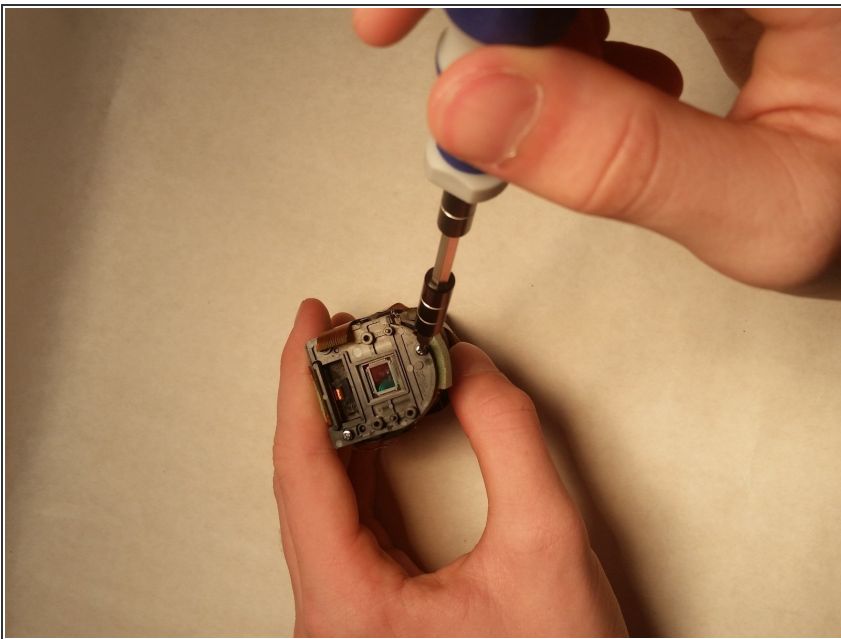
- After taking that off you will see the camera lens.

Step 7



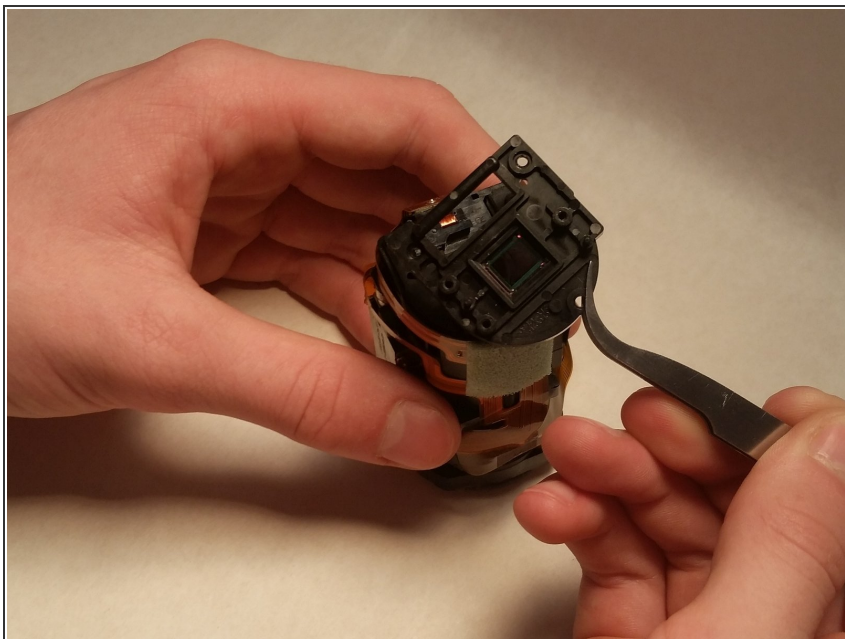
- Pry the piece hanging off with tweezers.

Step 8



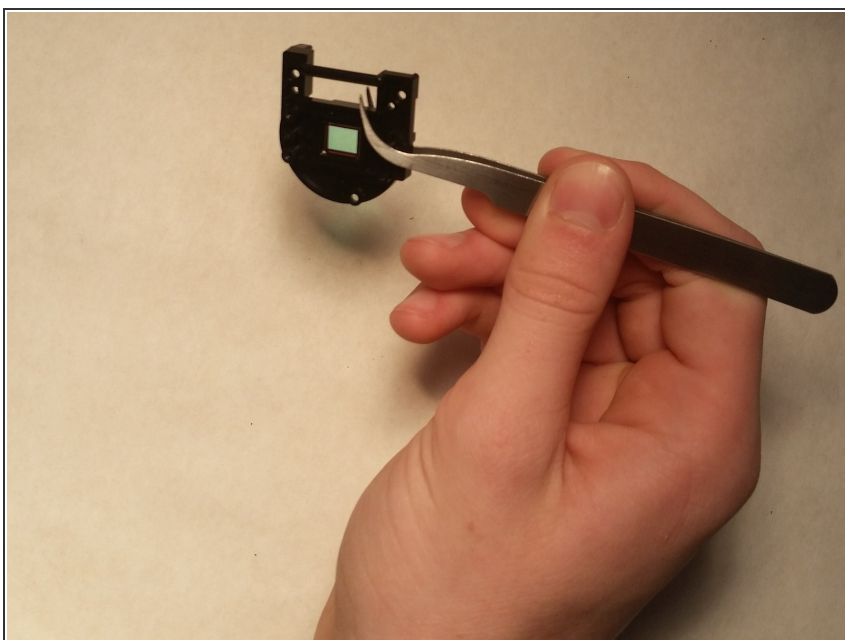
- Now you can unscrew the three screws(.5) seen releasing the camera lense from the camera.

Step 9



- After that you can pull it off with the tweezers.

Step 10



- Now that you have it off you can replace it and reverse the steps getting it back together.

To reassemble your device, follow these instructions in reverse order.