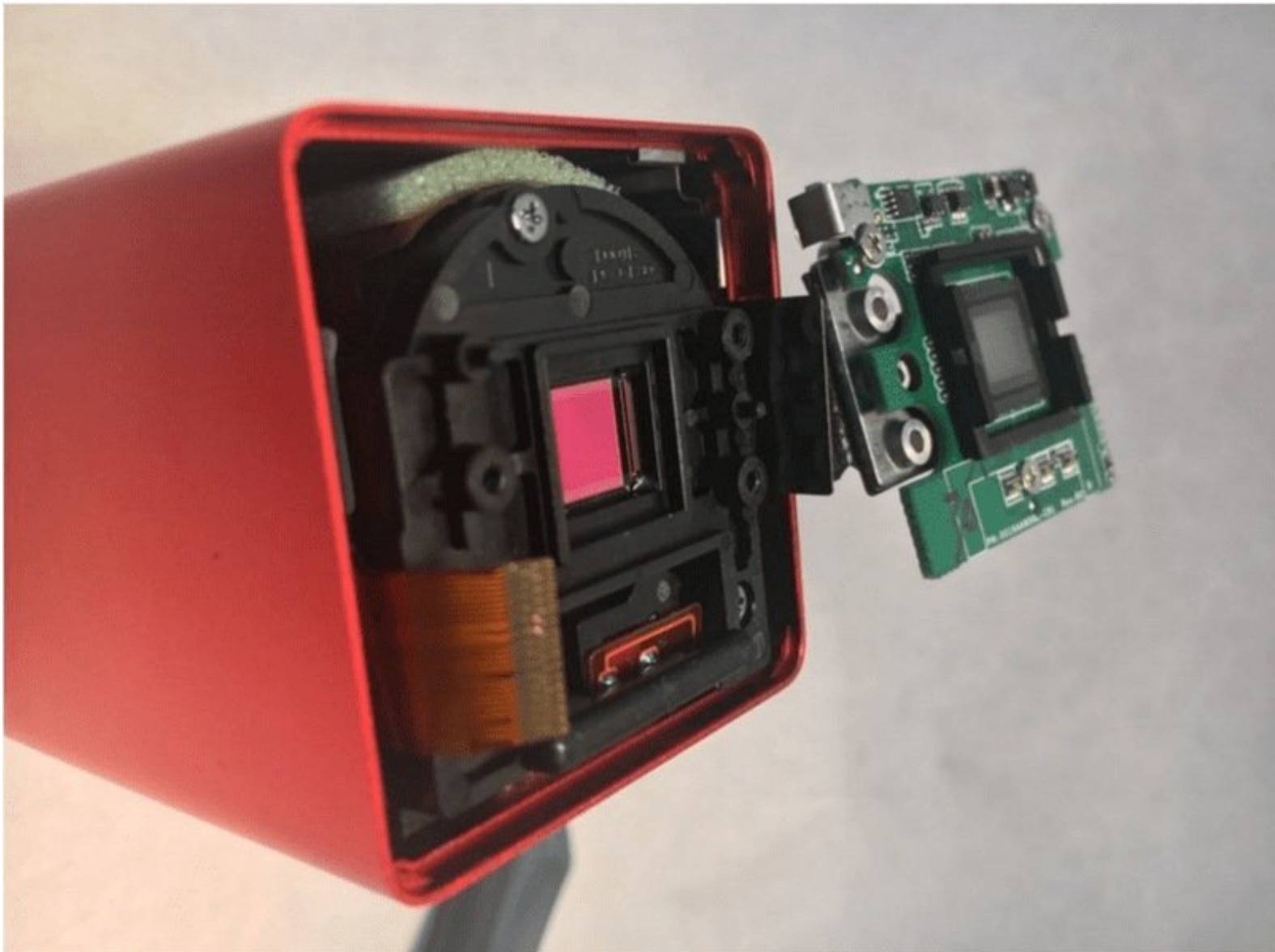




Lytro First Generation Light Sensor Replacement

Replace a light sensor on your first generation Lytro light field camera.

Written By: Mira Green



INTRODUCTION

This guide will demonstrate how to remove and replace a light sensor in the Lytro First Generation light field camera.



TOOLS:

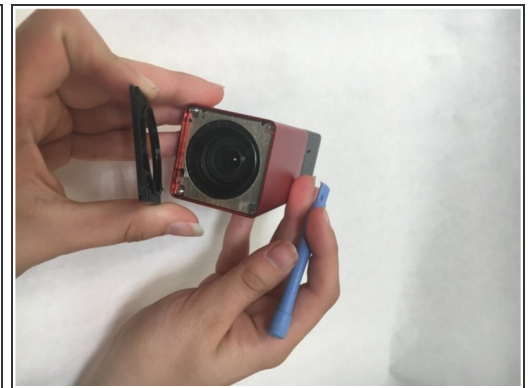
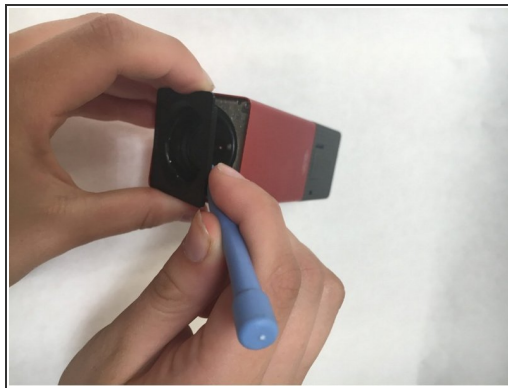
- [Essential Electronics Toolkit](#) (1)
-

Step 1 — Light Sensor

The Lytro logo is displayed in a large, stylized font. The letters 'LYTRO' are in black, and the 'O' is a red circle. The background is a soft, out-of-focus gradient of orange and yellow.

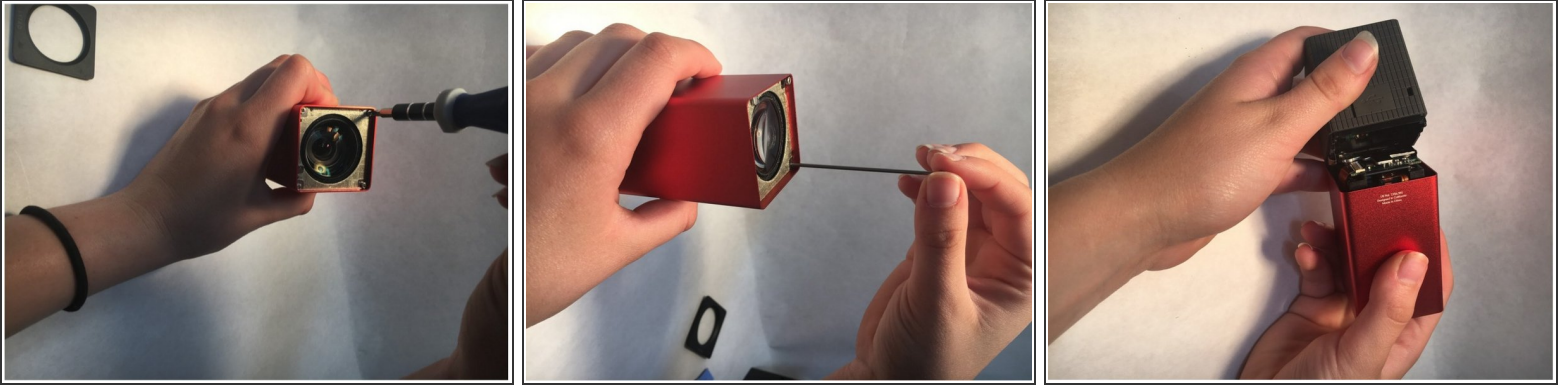
i Lytro has closed its doors, and can no longer service your camera if you break it further during this repair. They also cannot provide replacement parts to other camera repair shops.

Step 2



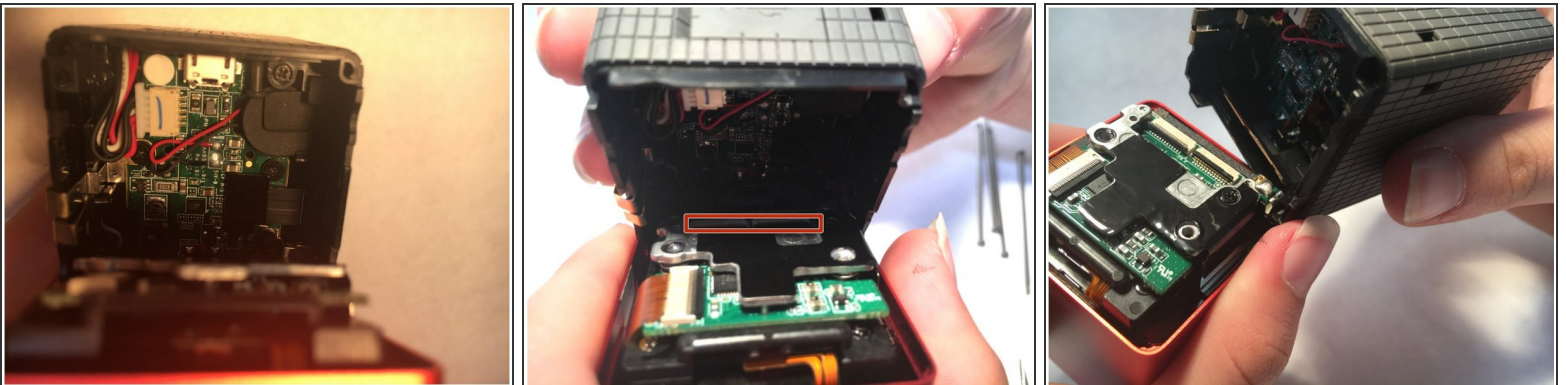
- Remove the lens covering by using the plastic opening tool to pry it away from the camera. There are strong magnets attached to the bottom so some force is required.

Step 3



- Remove the four screws surrounding the lens using a screwdriver.
- The screws hold the lens and screen assemblies together.

Step 4

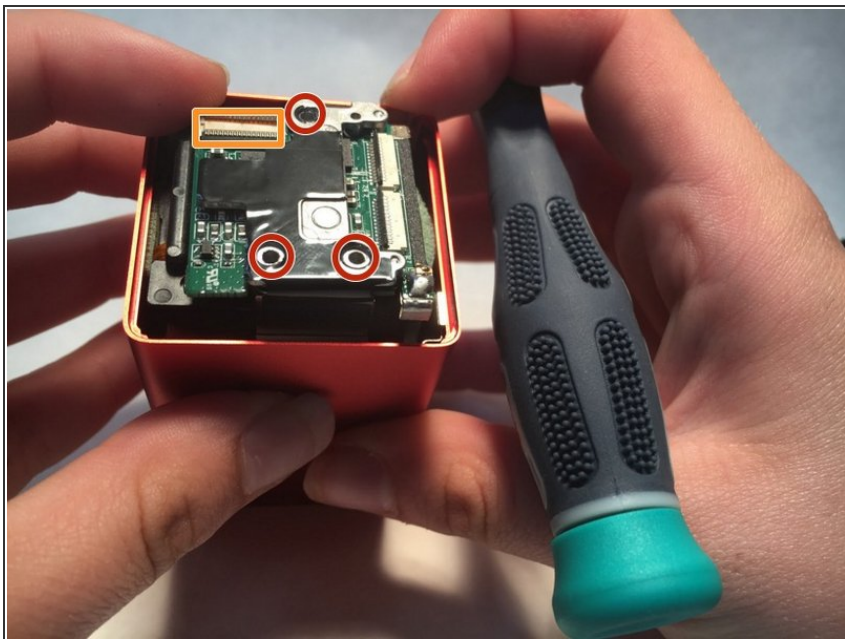


- The separation of the lens assembly and the screen assembly allows access to the motherboard
- gently disconnect the two ribbon cables (indicated in red on the second image) that connect the motherboard to the lens assembly by lifting up the black pieces of the bracket and pulling gently.

⚠ The ribbon cables are extremely difficult to reattach. Disconnect at your own risk.

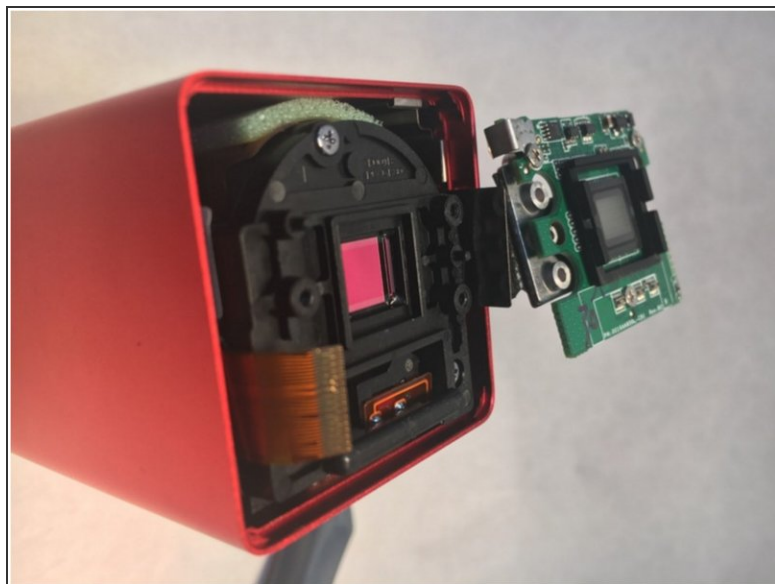
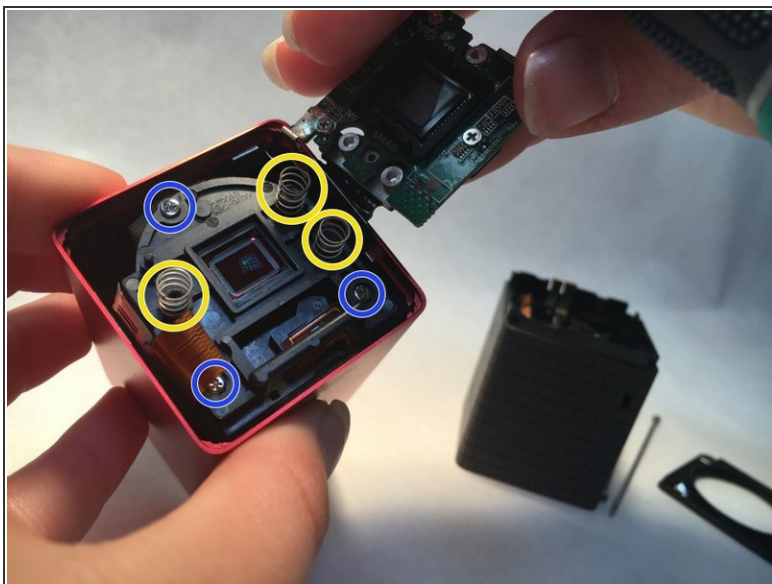
- There will be a slight bit of glue connecting the two portions that can be removed with a little force.

Step 5



- Remove the three black screws indicated in red
- Repeat the same process done to the first two ribbon cables with this one, indicated in orange.

Step 6



- Remove the three springs (yellow) and unscrew the three screws (blue).
- Replace the light sensor.

To reassemble your device, follow these instructions in reverse order.