



Lyve Home Teardown

This guide is to help teardown the soon to be EOL Lyve Home Device. This is also in hopes someone could find a way to develop new software for it to keep it alive.

Written By: Adonis Sardinas





TOOLS:

- [Essential Electronics Toolkit](#) (1)
-

Step 1 — Turn Lyve Home upside down



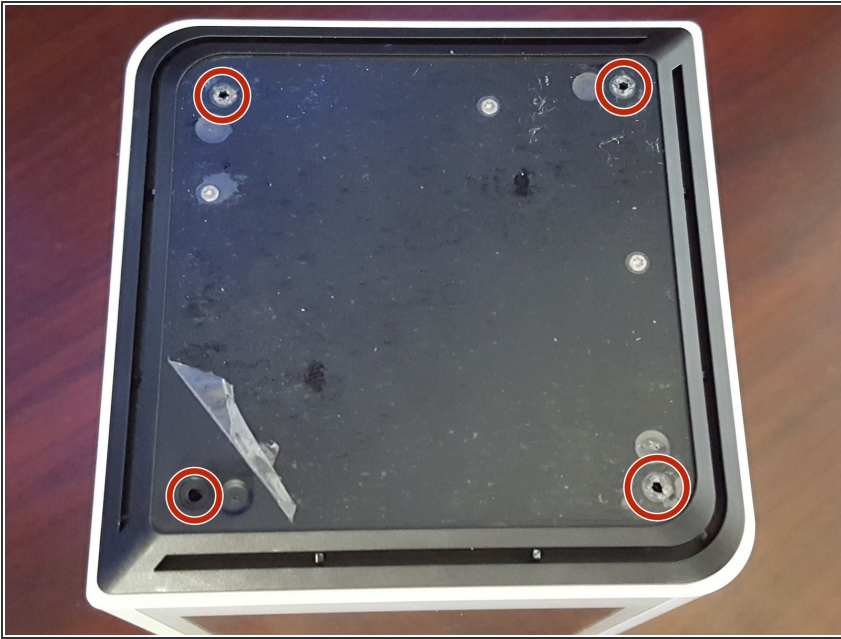
- Insert wisdom here.

Step 2 — Remove rubber pad



- This should be easy to remove

Step 3 — Remove 4x hex case screws



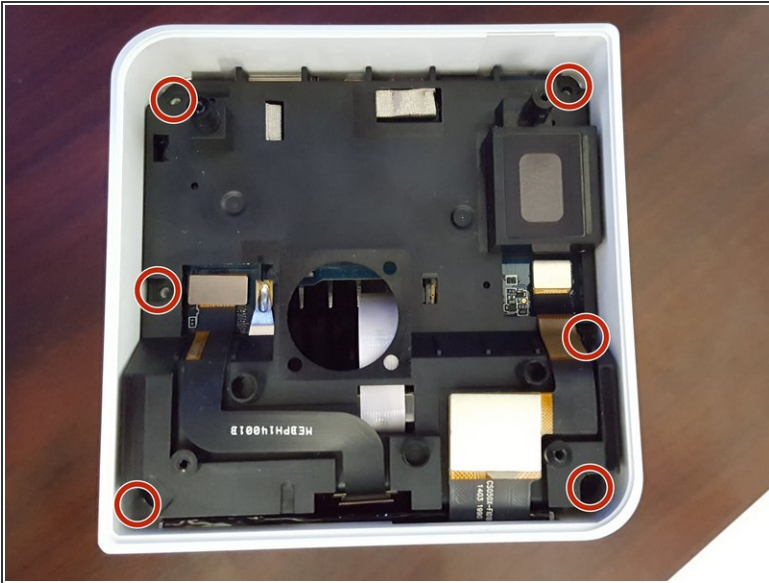
- In my case the sticky membrane that glues the rubber to the plastic stayed on the plastic.
- Remove the 4 hex screws that hold the bottom cover to the case

Step 4 — Remove bottom cover



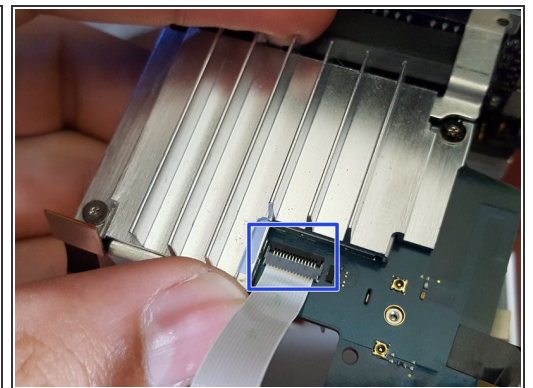
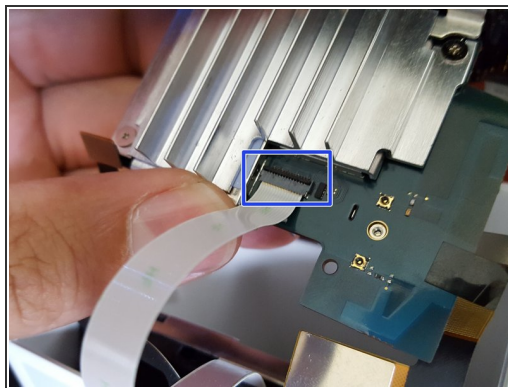
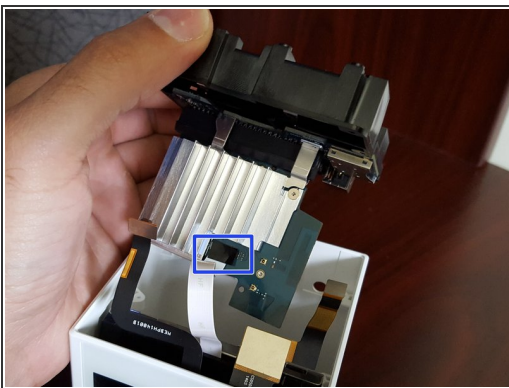
- Remove the bottom cover carefully. it should pop right out.

Step 5 — Remove main board enclosure



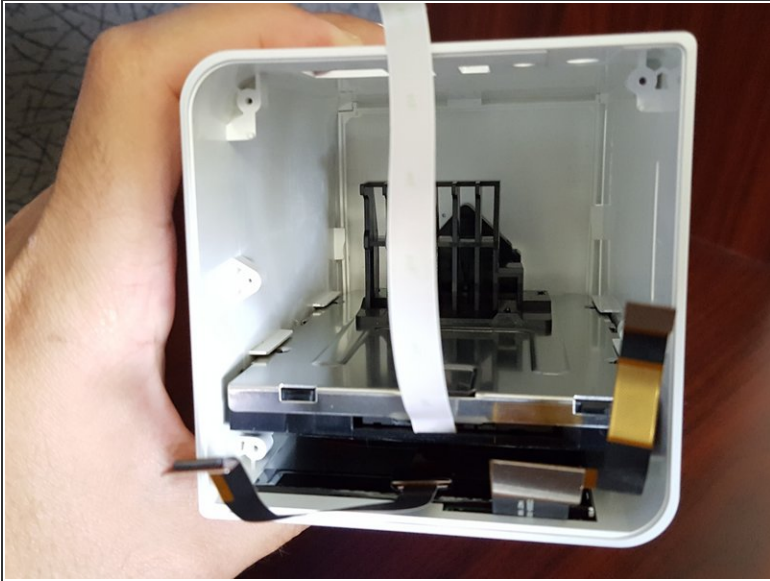
- Remove the 6 hex screws attaching the main board enclosure to case
- Remove connection ribbons that connect to the front LCD screen

Step 6 — Remove Mainboard enclosure



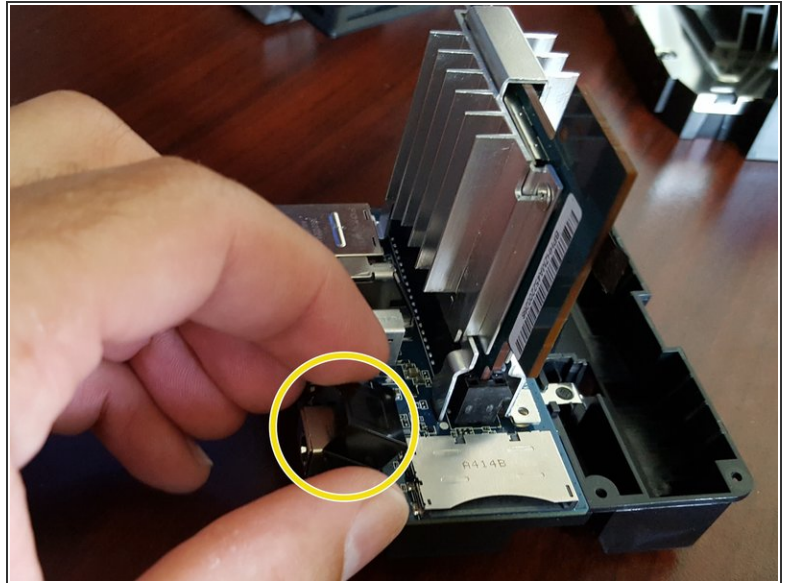
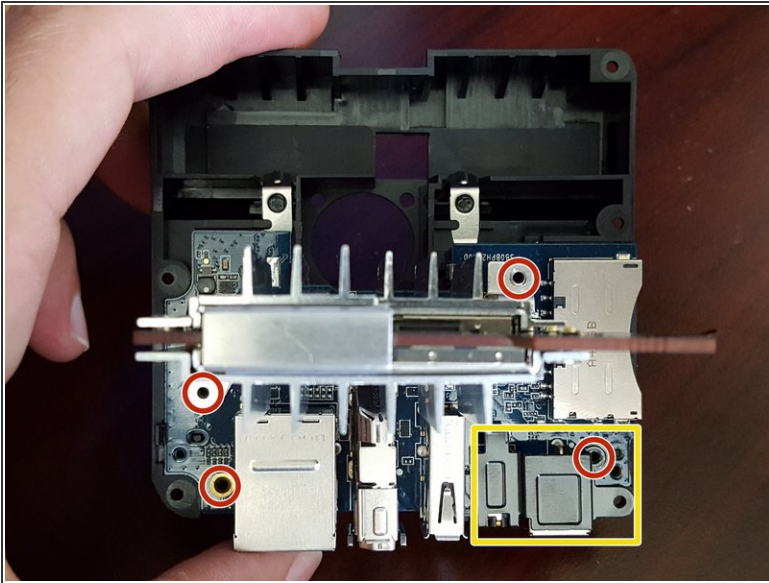
- Remove the mainboard enclosure from the case by placing your finger in the middle hole and removing it carefully from the case
- Remove the tape on top of the ribbon connector. this connects to the harddrive
- Unlock the connector by flipping the lock back to front. this flap is located closets to the heatsink
- pull the ribbon cable away from the mailboard

Step 7 — Remove the harddrive



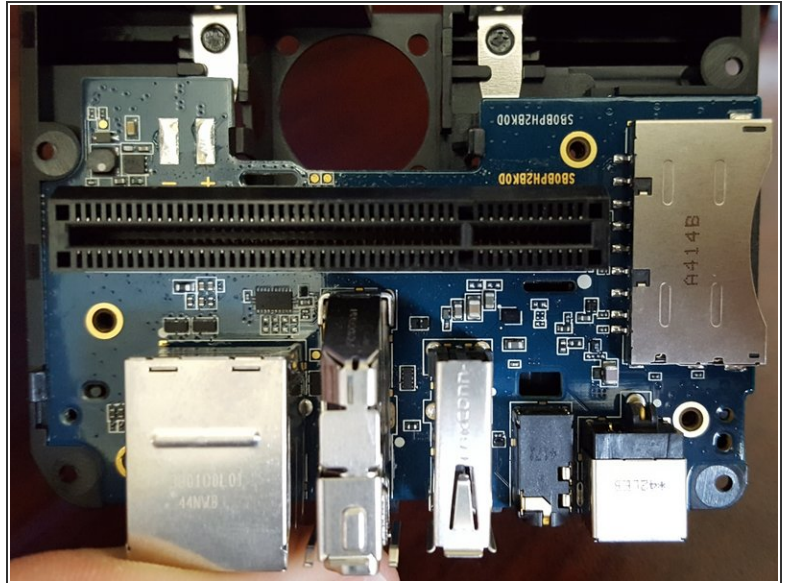
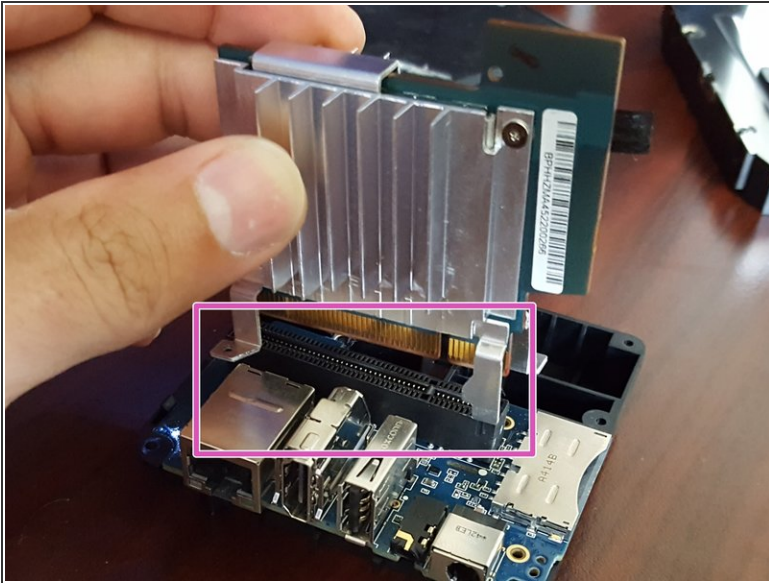
- Remove the hard drive by pulling it out

Step 8 — Remove Main board enclosure



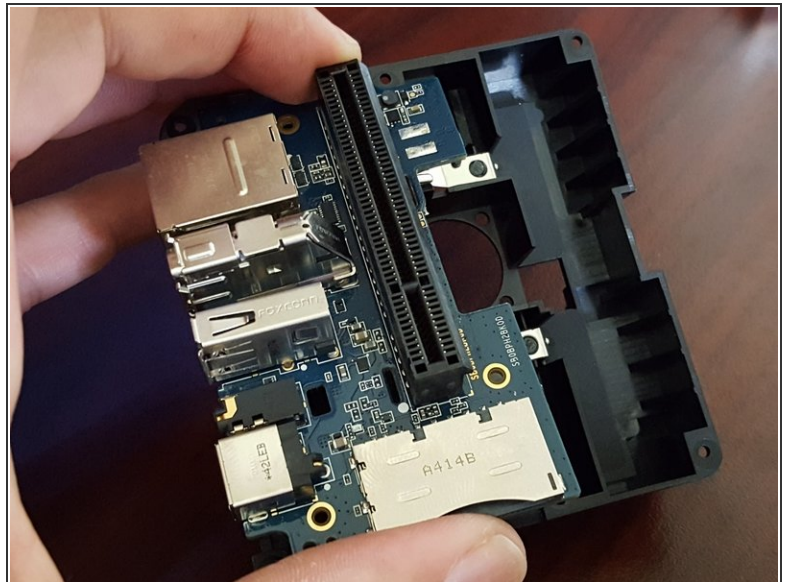
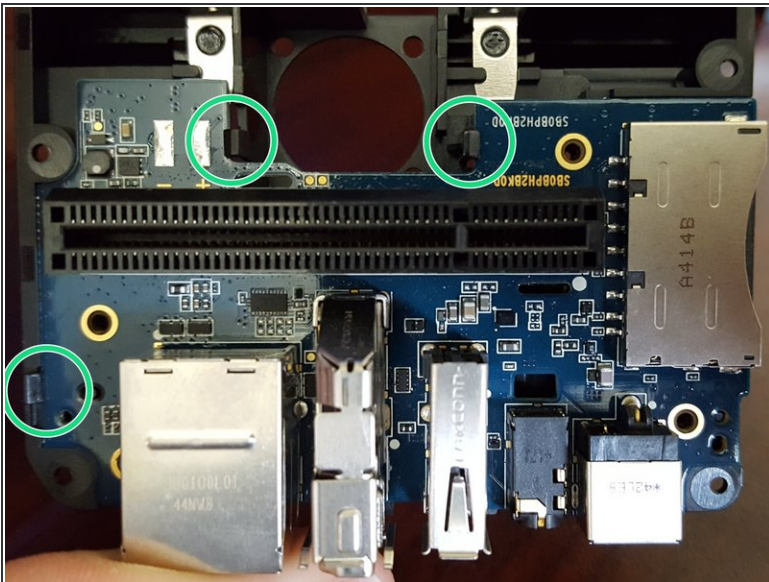
- Remove the 4 hex screws, 2x are holding the main board from the expansion board. 1x is holding the sound and power metal shield and 1 is left holding the expansion board from the enclosure.
- Remove metal audio/power shield
- Remove main board from the enclosure board.

Step 9 — Remove Main board from Expansion Board



⚠ Remove the main board carefully away from the expansion board.

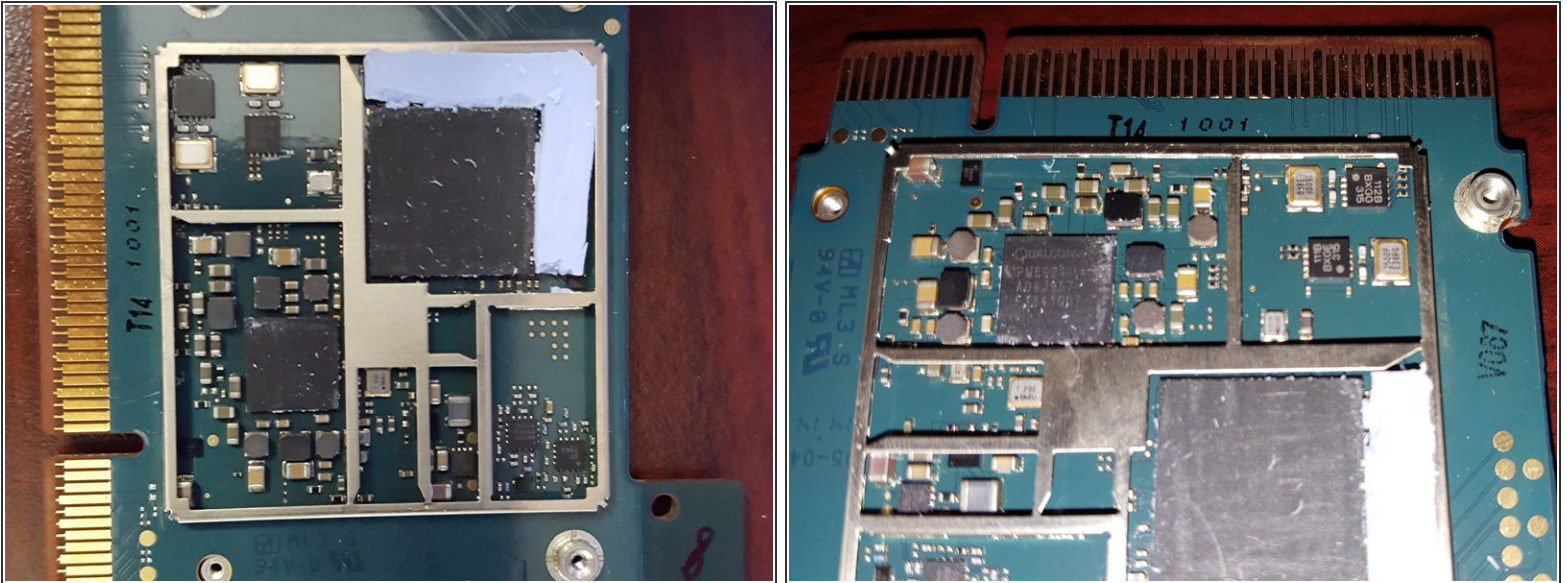
Step 10 — Remove expansion board from enclosure



● Carefully remove the expansion board away from the enclosure but un clipping it.

ⓘ Its recommended to start from the side with the SD card slot.

Step 11 — EXTRA - Board Pictures



- These are pictures of the main board components under the shielding

i Qualcomm | PM8921 | AD4J957

Step 12 — EXTRA - Board Pictures 2



- These are pictures of the main board components under the shielding

i Kingston eMMC 8GB | 240047-002,A00G | 1305 M30231710.10 | KE4CN3H5A

i Gigabit Ethernet | Atheros | AR8151

i Broadcom | BCM4339XXUBG