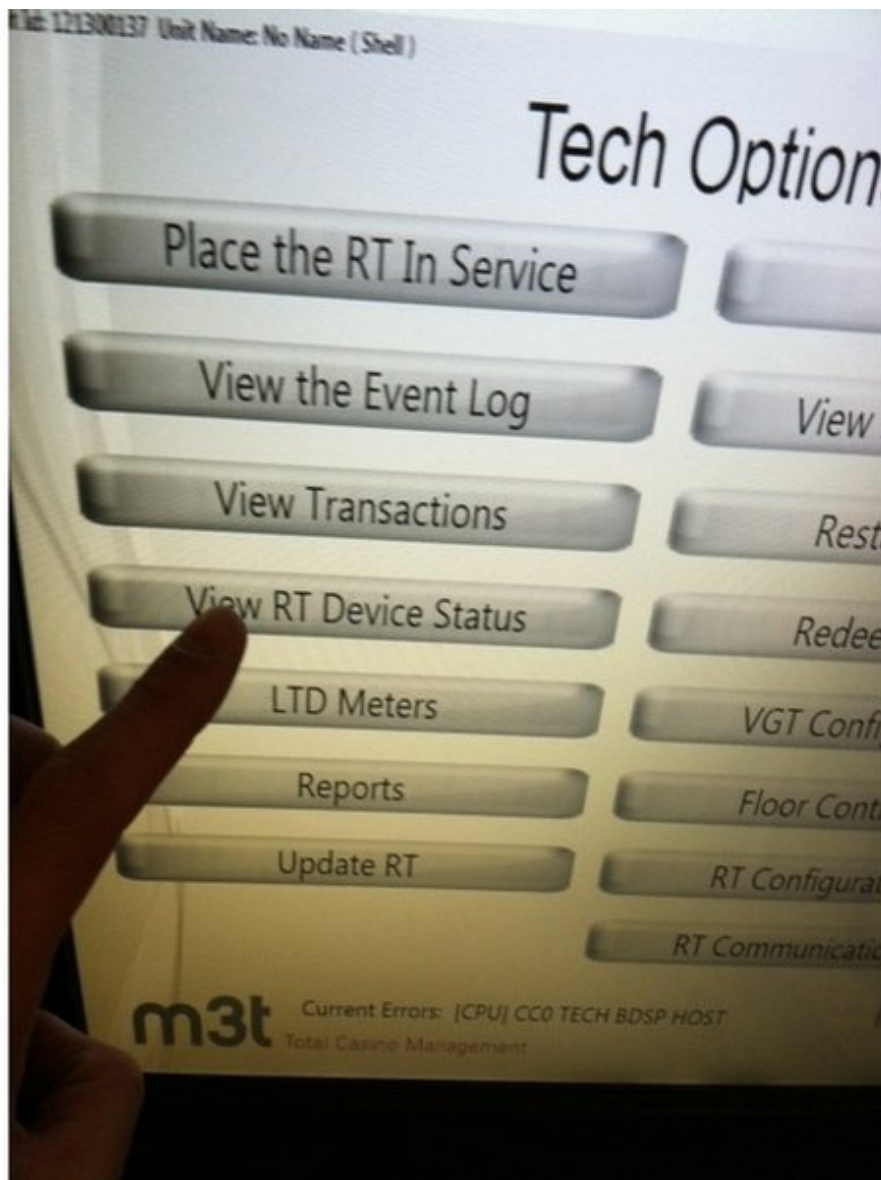




# M3t Bill Dispenser Maintenance

This guide will hopefully show you how to fix a bill dispenser.

Written By: Timothy Morse

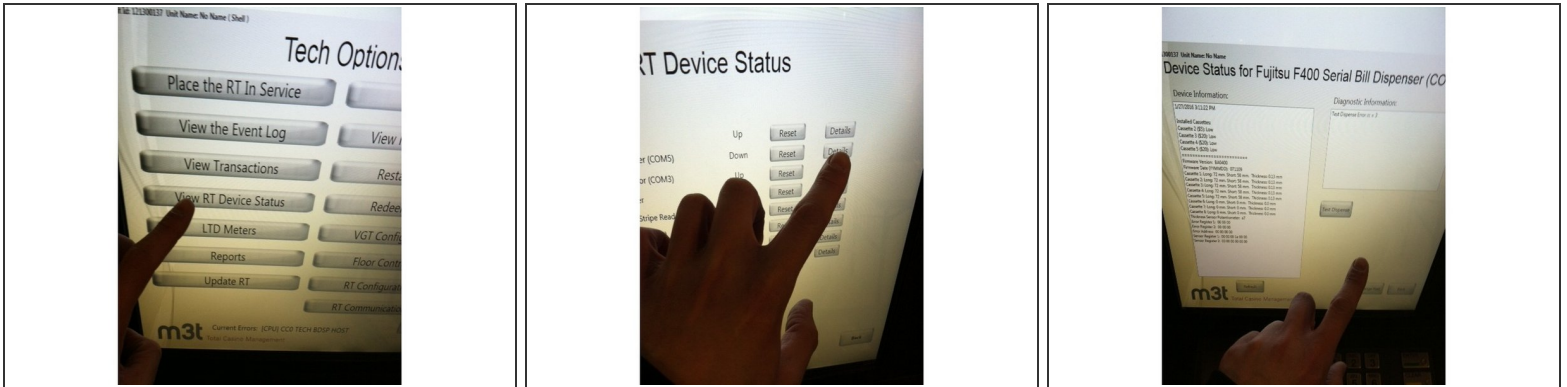




## TOOLS:

- [Phillips #2 Screwdriver](#) (1)
-

## Step 1 — Check Device Config



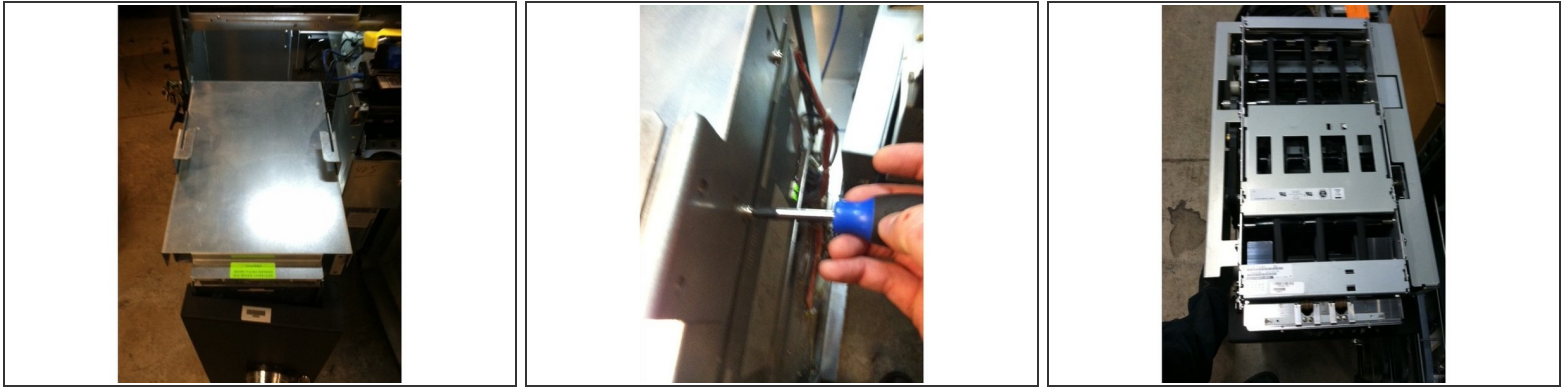
- When you get bill dispenser error the first thing you should check is the Device Config screen to see if it will show you where in the dispenser it is jammed. It shouldn't be taken as the only place it could be but it's a good place to start looking.

## Step 2 — The Front of the Dispenser



- Starting from the first place you see. It's possible that the bills could be stuck in the front of the dispenser but you should notice that when you open it.

### Step 3 — Remove the Cover



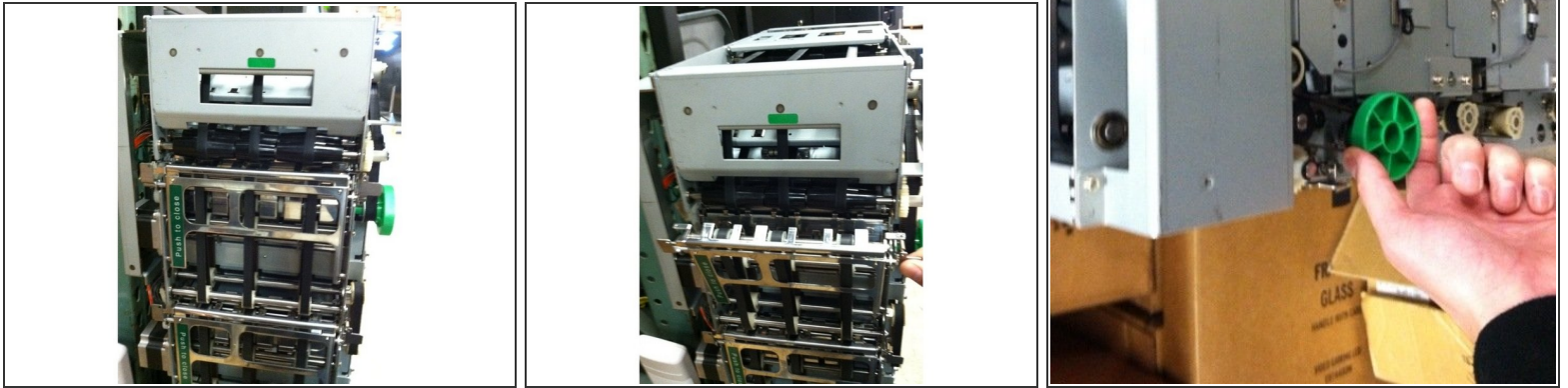
- The next place to check is the top of the dispenser at the head. Sometimes you will need to remove a cover to the dispenser and the two plates that keep it from swaying too much.
- Make sure all the belts are there and intact. If the middle is missing the machine can potentially still function but it won't be reliable. However, if either of the side belts are missing the machine will not function properly at all and the entire head will need replaced.
- If the belts are twisted the best thing to do is to untwist one section and slowly turn the dispenser knob, holding that part of the belt in the correct position, until it's untwisted in its entirety.

### Step 4 — Forked Thingy



- If there is an issue with (the forked thingy) , as sometimes it will come loose and impale money, on the right hand side of it there is a Philips head screw. If you unscrew said screw and rescrew it in making sure it stays level and that should fix the issue.

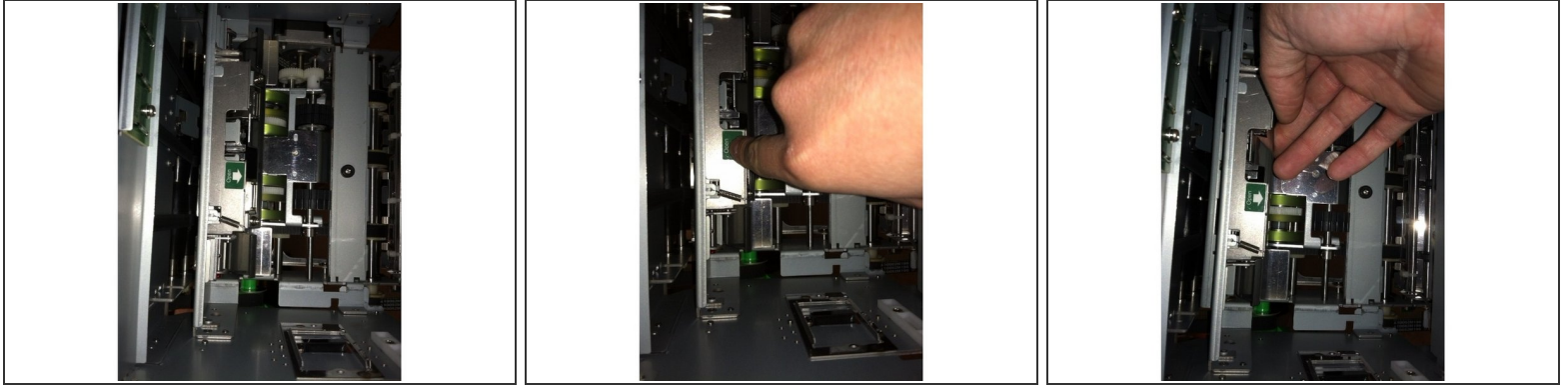
## Step 5



- If you have a Jam at the back of the bill dispenser the first thing to do is to check behind it to see where it is located.
- Depending on which cassette it is and where it is located you may be able to see it from the back of the dispenser. If that is the case you can open the back area and possibly reach the jam.
- After doing so I recommend turning the dispenser knob a few turns to see if anything comes out. If no obstruction is found you may need to open the safe and check the cash can
- **ALWAYS MAKE SURE YOU PUT IT BACK LIKE IT WAS!**

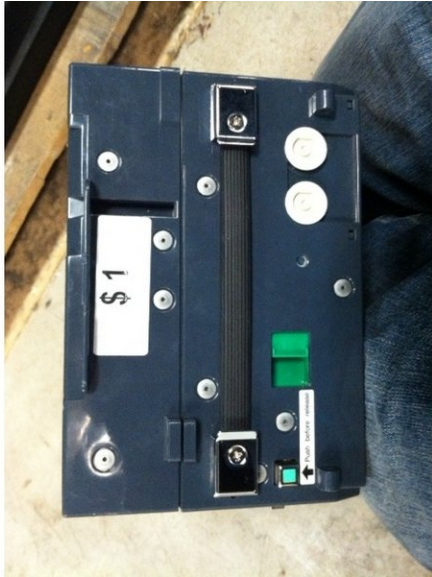


## Step 6 — Behind the Cash Can



- After opening the safe and removing the cash can, look into the shelf where it was. There should be two white arrows with a green background.
- Push down on the bottom arrow and it should release the two and allow for some movement.
- Once you have done this check for obstructions such as rubber bands or ripped dollar bills. If there is nothing wrong in that area, it may be a good idea to check the cash can.

## Step 7 — Cash Can



- There should be a green button on the front of the cash can that needs to be pushed to the side in order to activate it. Push it to the side to open the cash can.
- Once open you need to check the spring to make sure it's working and check to see if the money is sticking together.
- Also check to see if there are any rubber bands or ripped money that may be causing issues.

## Step 8 — Get to the Cash Can Magnets



- To get to the magnets you will find a plate, on what would be considered the top of the cash can, held on by a screw.
- Remove the plate and inside you will find another plate that is held in by two screws. Remove the second plate and you'll find it has magnets all on one side of it.
- If they are correctly configured for their denomination then there should be no issue. Of course, if they are not correct them and see if that fixes it.



## Step 9 — Cash Can Magnets



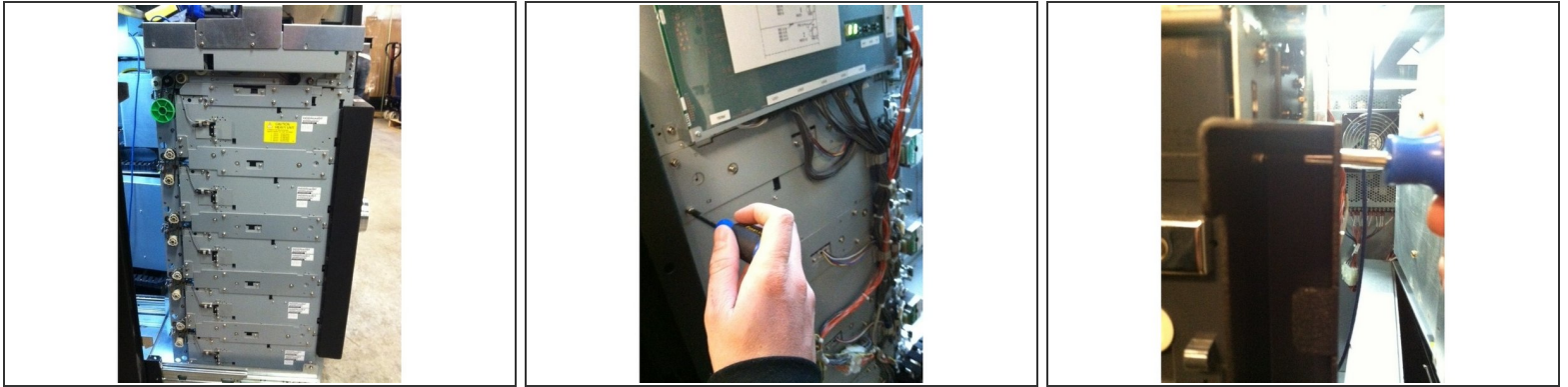
- There is a possibility that the magnets are not properly set. The correct combinations for the different denominations are as follows:
  - \$1- C
  - \$ 5 - B D
  - \$20 - A D
  - \$50 - A C D
  - \$100 - A B D
- You can find the letters across the bottom of the tray the magnets sit on.

## Step 10 — Cleaning the Dispenser



- To clean the belts take a rag with cleaning solution and loosely grab the belt you wish to clean with it. With your other hand slowly turn the dispenser knob until you've cleaned the entire belt. Repeat for the other two belts at the top of the dispenser.
- Using the same solution wet your rag and wipe down the back side of the machine making sure to turn the dispenser after each wipe down until you've gotten all of the belts.
- Compressed Air can be used for the majority of the outside of the dispenser as well as the inside.
- It's important to check the laser eyes to make sure they aren't covered in lint or any other obstruction as this could result in the machine jamming due to thickness errors.

## Step 11



- To swap a Bill dispenser head, your first step is to pull the dispenser out so that you can work with it.
- Then, unplug all of the cords that are plugged into the board. There should be four across the bottom and two on the side.
- Now that it's unplugged, on either side is a plate with four screws which are holding the dispenser head to the rest of the machine. Remove these screws on both sides and take the plates off as well. You will also need to remove the safe door from (at least) the section that you want to remove.
- Once this is accomplished tilt the head to the left which will allow you to remove the belt that is located on the back left had side. Remove the belt and lift the head from the dispenser.

To reassemble your device, follow these instructions in reverse order.