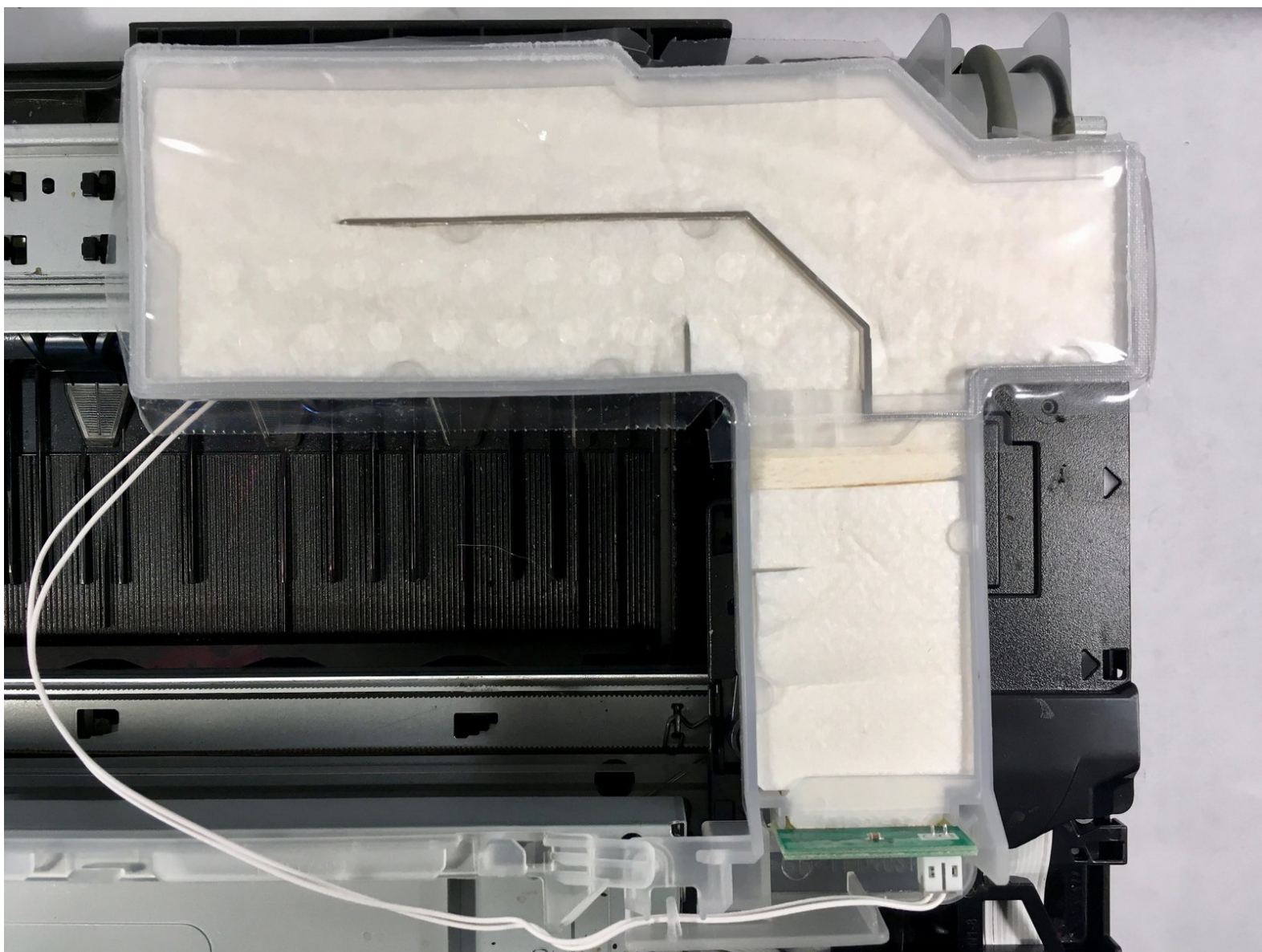




MFC-J4410DW Ink Absorber Box Replacement

This guide will walk you through replacing the ink absorber box, for when you receive an "Ink Absorber Full" or "Near Full" error.

Written By: Calion



INTRODUCTION

When "Ink Absorber Full" or "Ink Absorber Near Full" appears on your printer screen, it's time to replace the Ink Absorber Box (and/or the [Flushing Box](#)).



TOOLS:

- [Protective Part](#) (1)
optional
- [Spudger](#) (1)
- [Phillips #2 Screwdriver](#) (1)
- [Binder Clip](#) (2)

Small




PARTS:

- [Ink absorber box](#) (1)

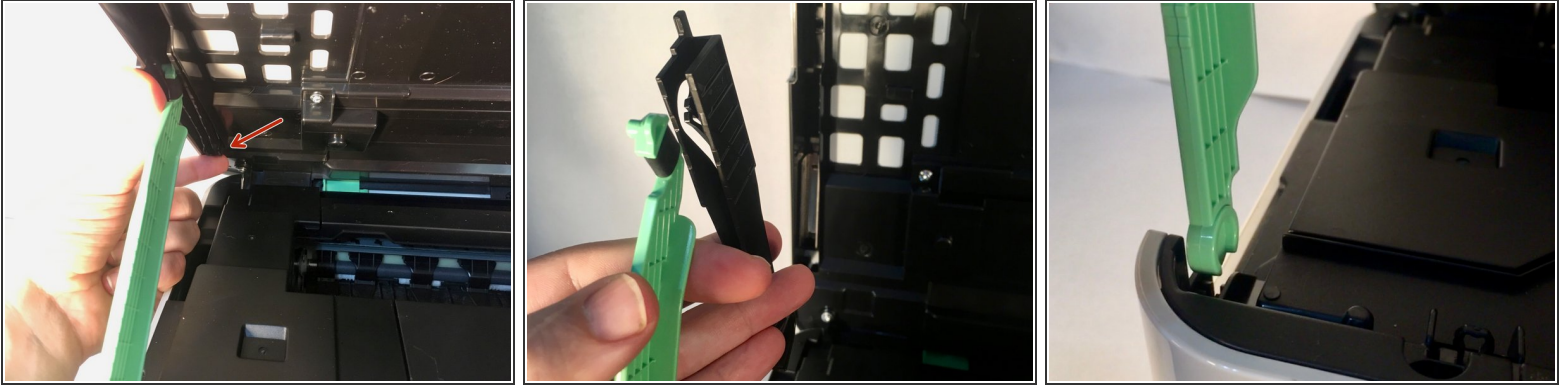
Step 1 — Preparation



 Before beginning disassembly, turn off the printer and unplug the power cord.

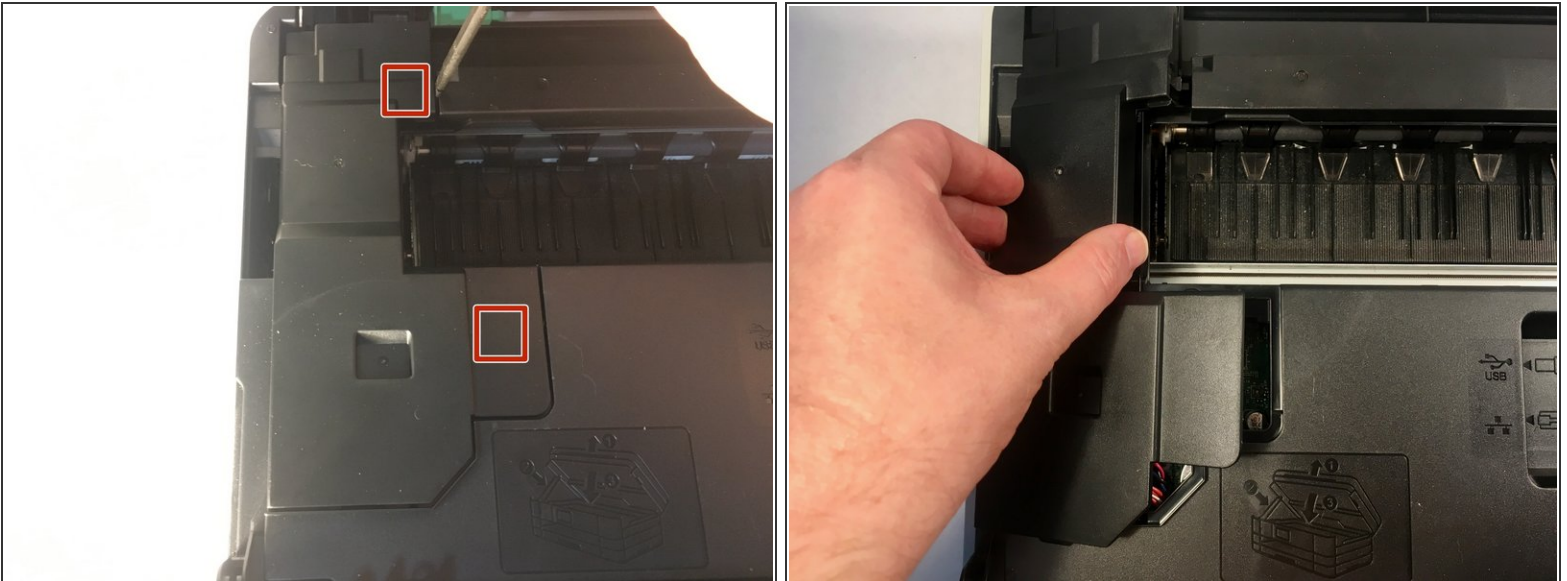
- Open the front access door and remove any cards or cables present. Close the access door.
- Remove the paper tray.
- Remove the ink cartridges.
 - ① You may wish to install the [Protective Part](#) to prevent the ink tubes from drying while the cartridges are removed.
- Open the printer cover using the finger holds on the sides.
- Unplug and remove any cords present under the cover.
- Remove the LAN port and EXT port caps (if present).

Step 2 — Removing the cover support



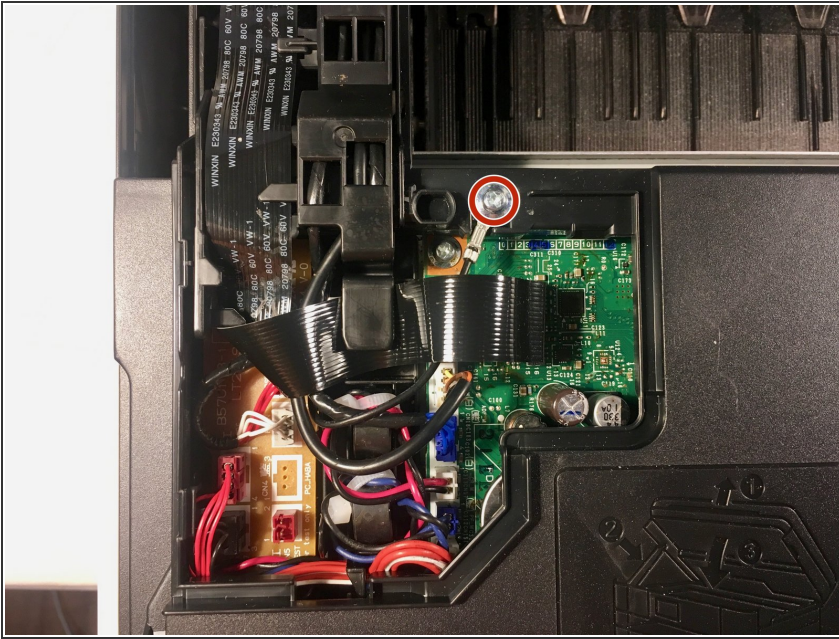
- While holding the cover with one hand, pull the hook on the back of the support damper, then remove the damper from the cover.
- Remove the damper from the support.
- Turn the support upright and pull it straight out of the printer.

Step 3 — Removing the harness cover



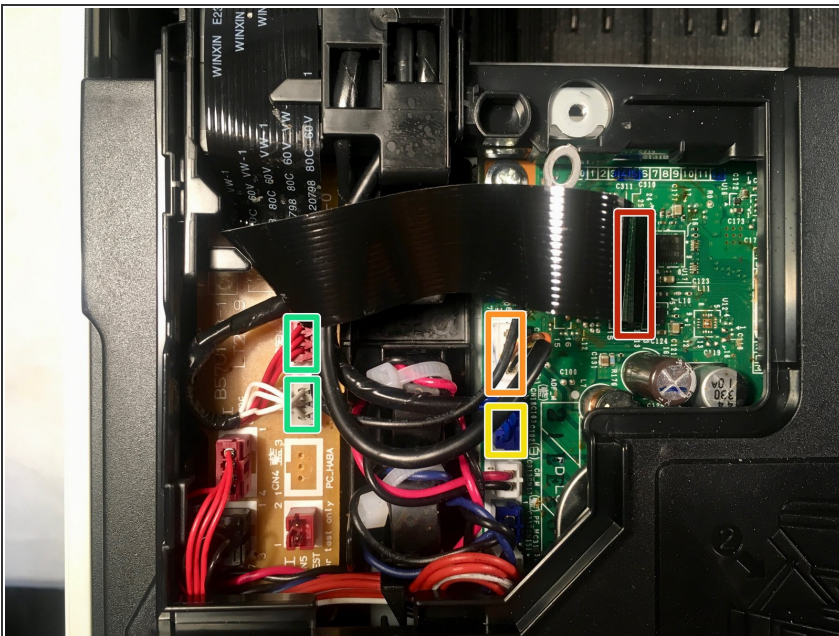
- Use your finger or a spudger to unhook the two tabs on the right side of the harness cover by levering it up.
- Remove the harness cover. There are two tabs on the left side that you have to wiggle free, and one on the front.

Step 4 — Removing the grounding screw



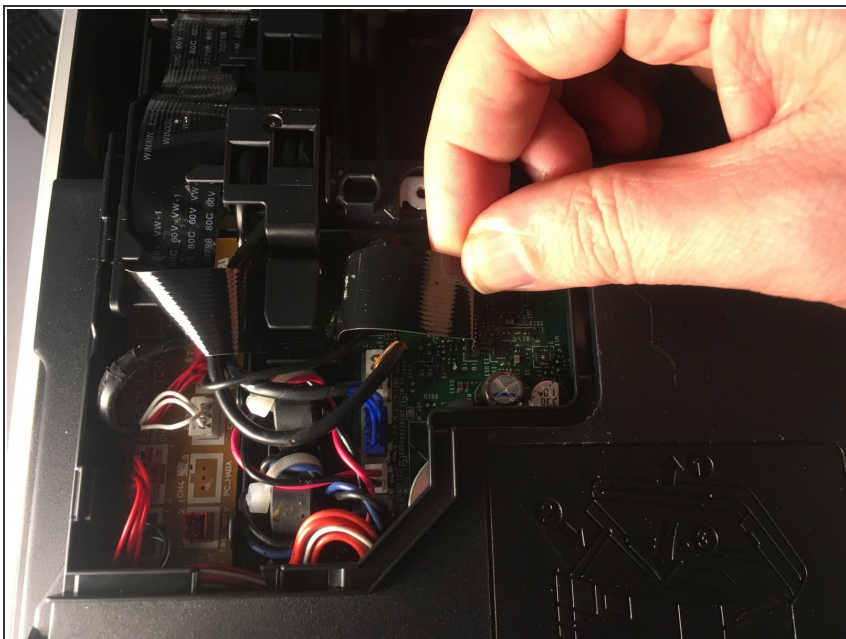
- Remove the 6 mm Phillips #2 screw from the grounding wire of the ADF motor harness.
- ✦ Torque: $0.40 \pm 0.10 \text{ N}\cdot\text{m}$
- ⓘ The Brother service manual lists torques for all screws, but proper torque should not be necessary.

Step 5



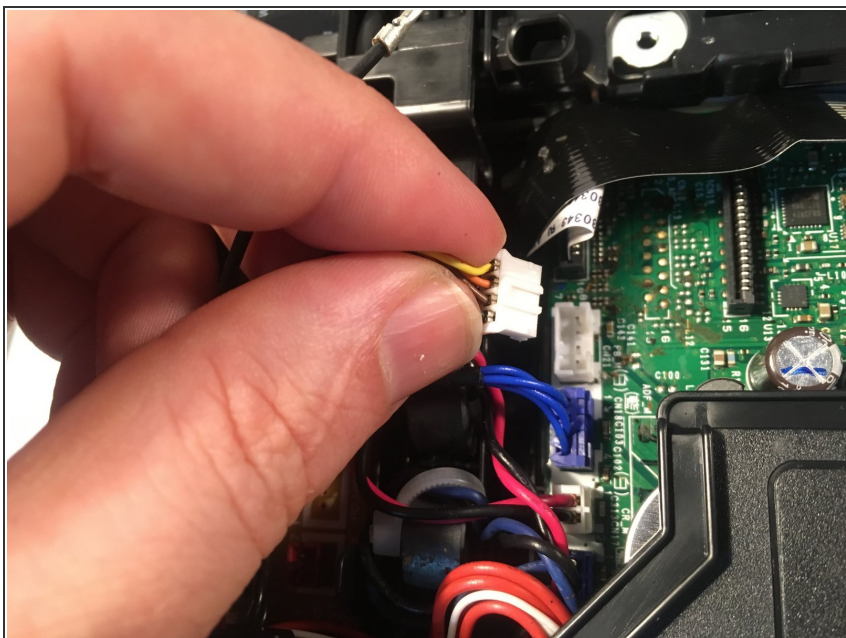
- In the proceeding steps, you will disconnect the following cables:
 - CIS flat cable
 - Scanner motor harness
 - ADF motor harness
 - Document detection/document scanning position sensor harness

Step 6



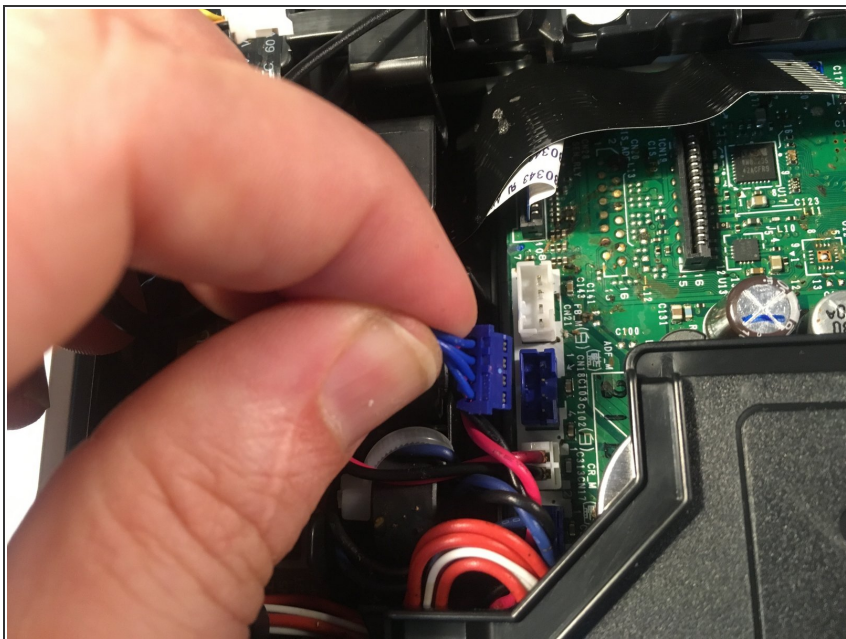
- Pull the CIS flat cable out of its socket.
- ⓘ Pull all flat cables directly up out of their sockets, pulling on the cables themselves at the blue tabs.

Step 7



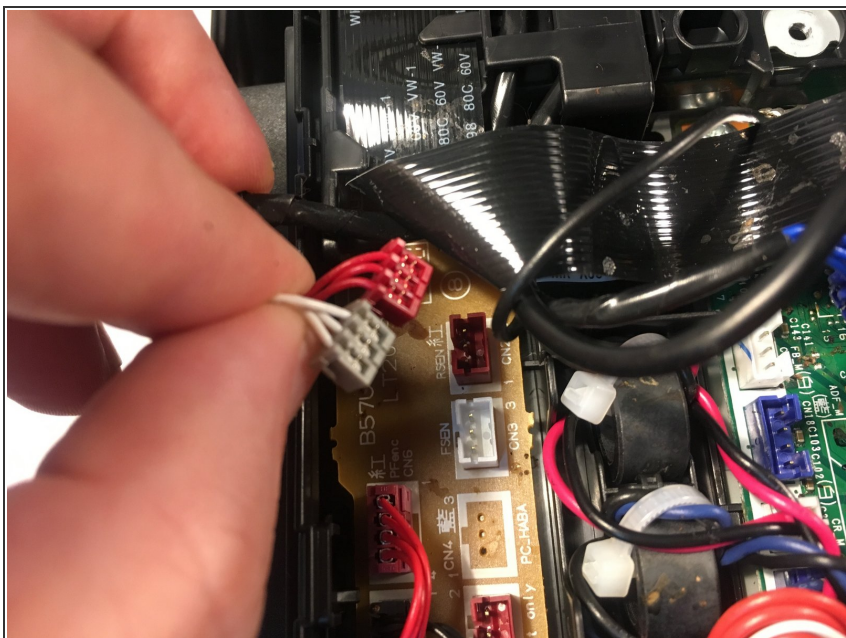
- Pull the scanner motor harness out of its socket.

Step 8



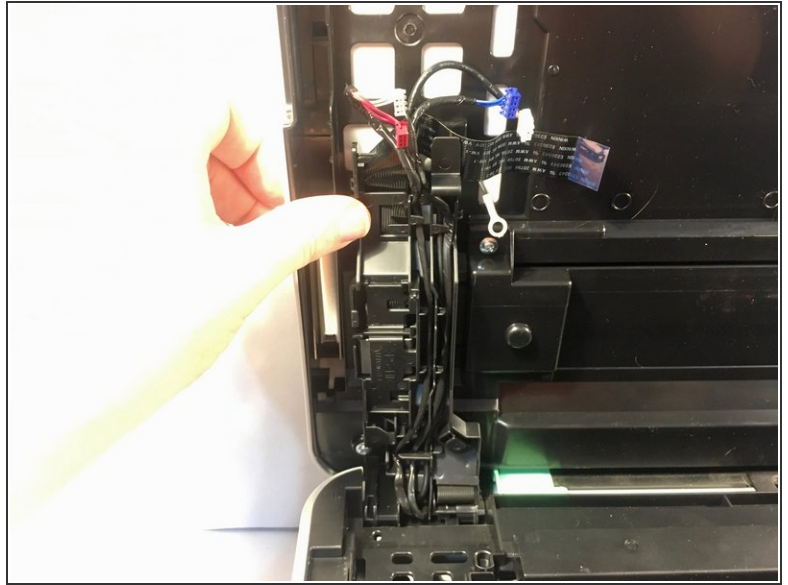
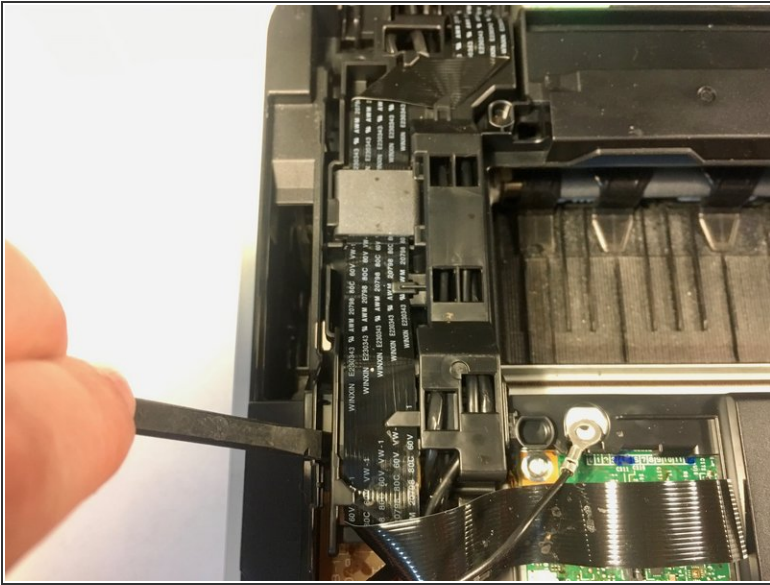
- Pull the ADF motor harness out of its socket.

Step 9



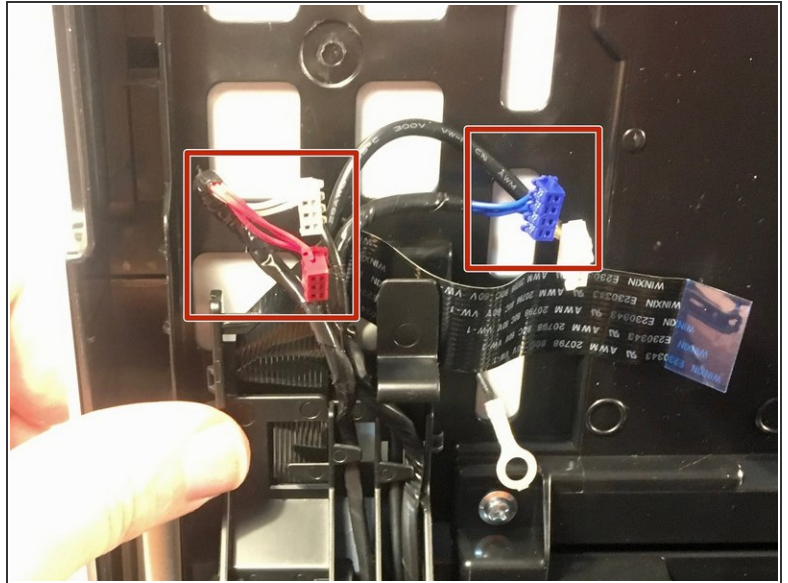
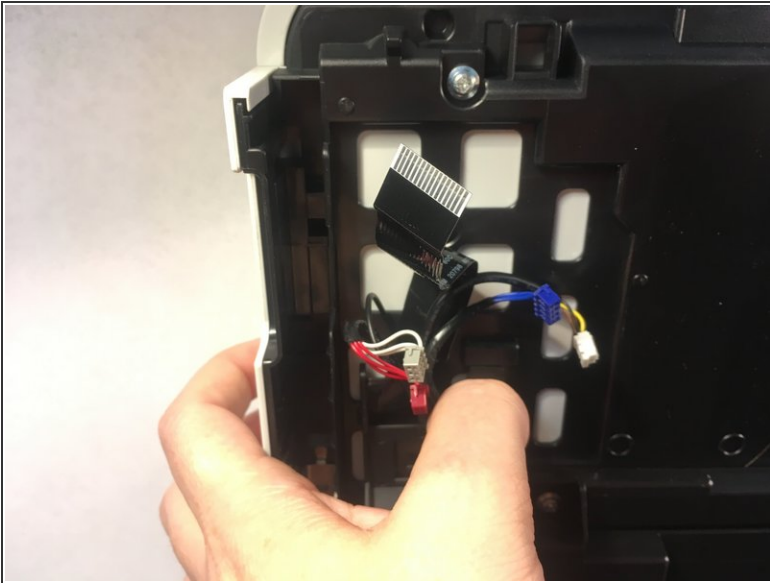
- Pull the document detection/document scanning position sensor harness out of its sockets.

Step 10 — Opening the scanner harness holder



- Insert a spudger between the scanner harness holder and frame to release the tab. There is a second tab on the opposite side.
 - Lift the scanner harness holder out of its frame.
- ✦ **Reassembly Note:** Before reattaching the harness holder, it is advisable to reattach the cover support ([Step 2](#)) to minimize tension on the wiring harnesses.

Step 11 — Securing the scanner harness holder



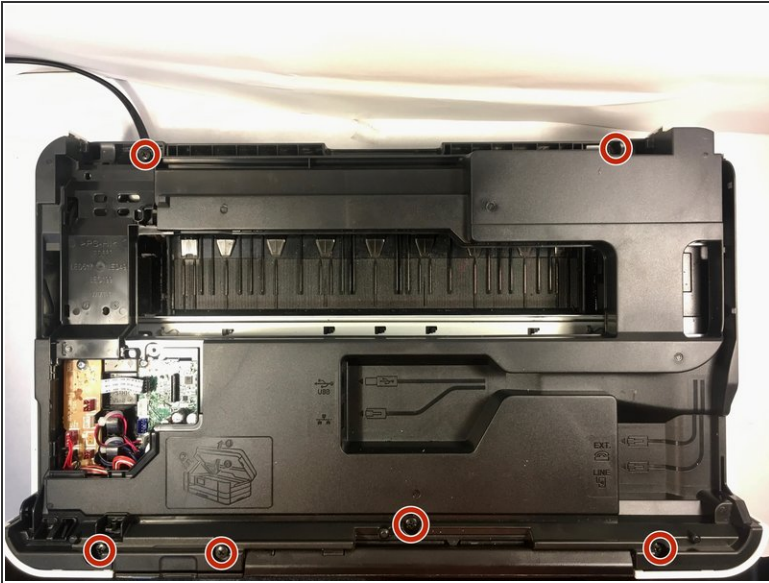
- Push on the tab to secure the scanner harness holder to the scanner cover.
- De-route the document detection/document scanning position sensor harness and the ADF motor harness from the scanner harness holder.
- ☑ During reassembly, put a 20mm-thick pad (book, stack of paper) on the scanner glass, close the scanner cover, then route the document detection/document scanning position sensor harness and the ADF motor harness through the harness holder. This will ensure the proper harness tension to allow scanning of thick books.

Step 12 — Removing the scanner cover



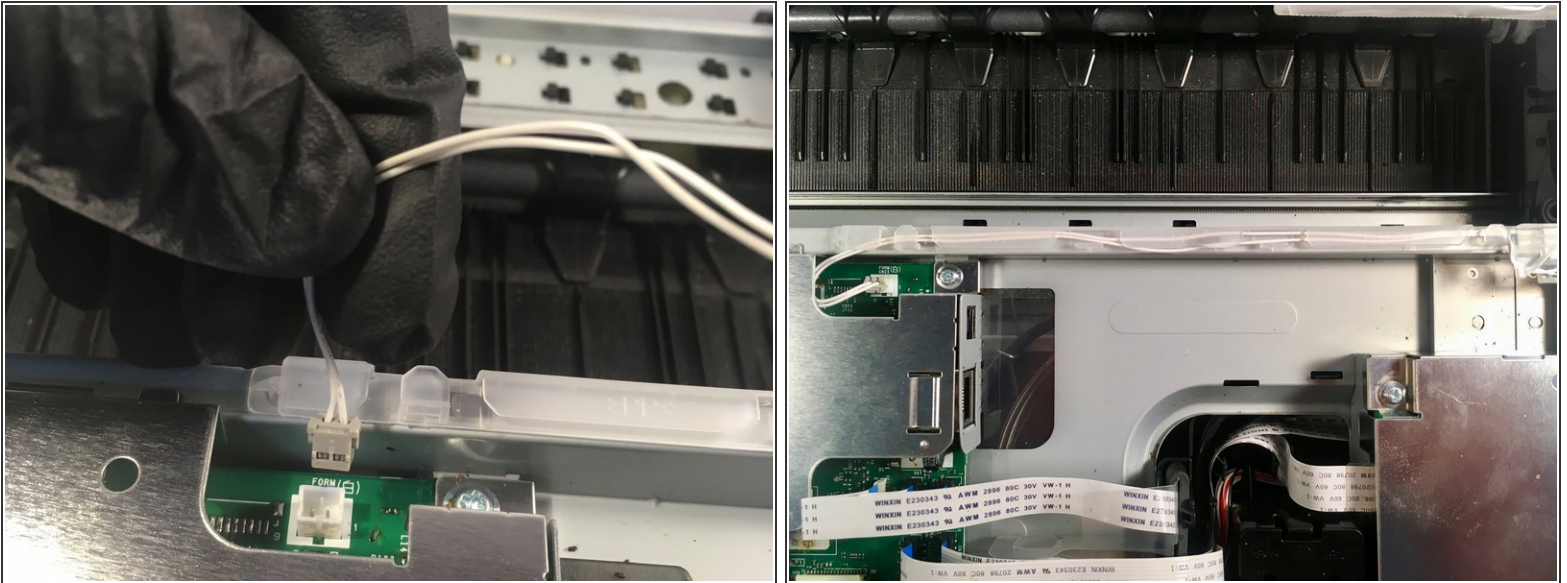
- Using both hands, pull the scanner cover to the rear while holding it vertically, then lift it off of the printer.

Step 13 — Removing the upper cover



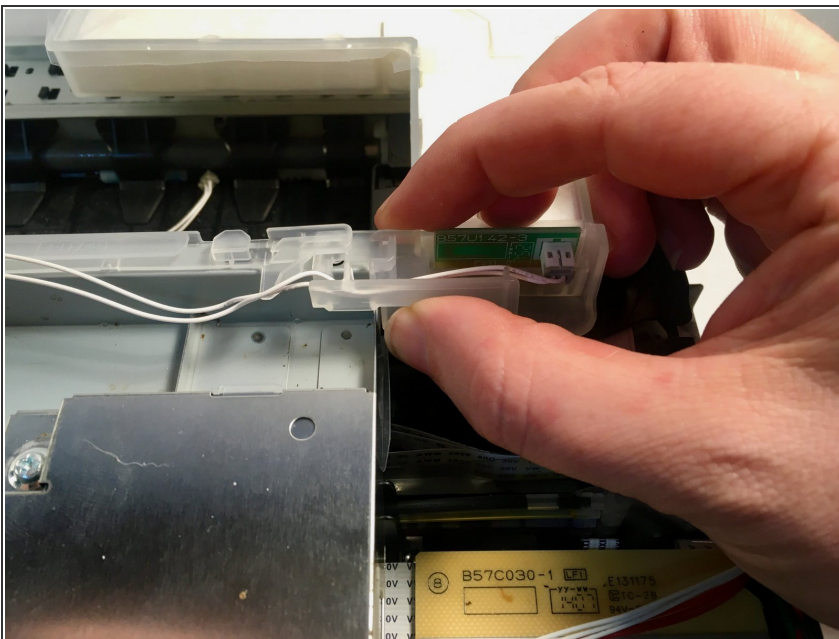
- Remove the six 12 mm Phillips #2 screws securing the upper cover to the printer.
 - ✦ Torque: 0.70 ± 0.10 N•m
- Pull off the upper cover.
 - ✦ When reinstalling, ensure that the control panel wiring holder slides into its slot on the upper cover.

Step 14 — Removing the ink absorber box wiring



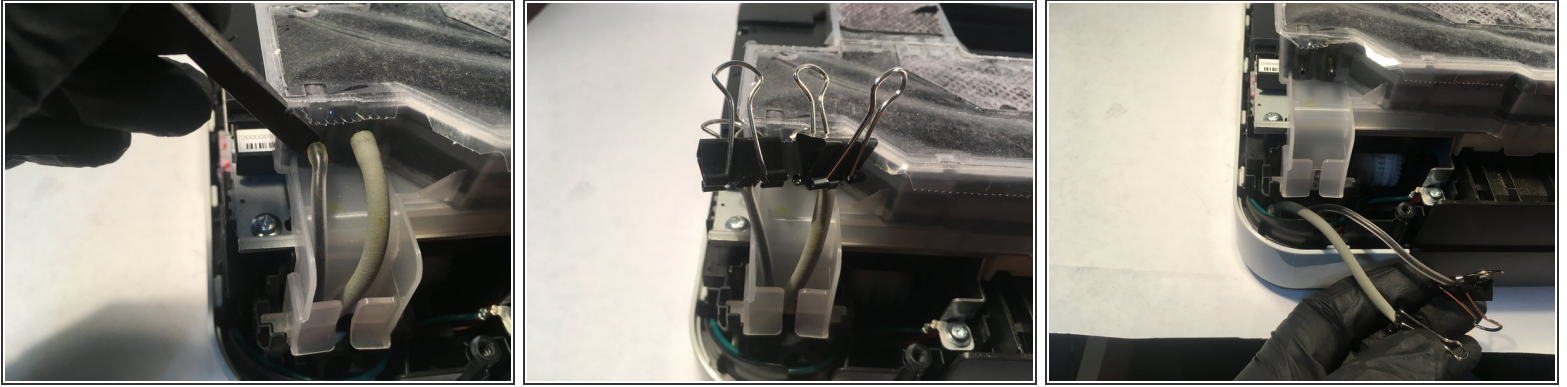
- Remove the ink absorber full sensor from its socket.
- De-route the wiring from its harness.

Step 15 — Unhooking the ink absorber



- Unclip the ink absorber from the harness by pulling it up and to the right.

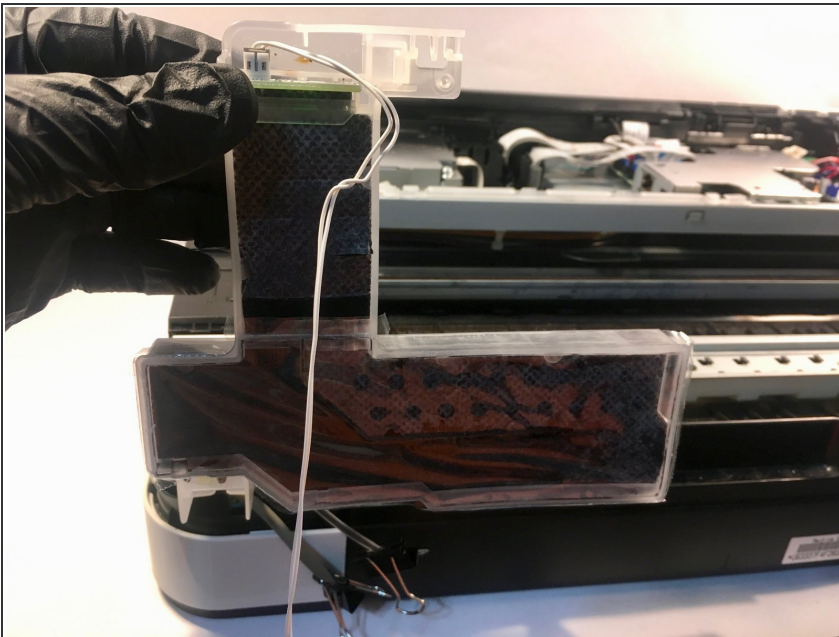
Step 16 — Removing the tubes



i For this step, spin the printer around so the back is toward you.

- Remove the drain tube and the air vent tube from the ink absorber box. A spudger may be helpful.
- Clip the ends of the tubes so they won't leak.
- De-route the tubes from the holder.

Step 17 — Removing the ink absorber box



- Rotate the ink absorber box 90° vertically, and pull it up out of its socket.

To reassemble your device, follow these instructions in reverse order. You may also wish to [replace the flushing box](#) at this time.

Screw torques from the service manual have been included if you happen to have a torque screwdriver, but don't worry about them if you don't.

After reassembly, follow the following steps to reset the purge count in order to clear the "Ink Absorber Full" error:

1. Plug the printer in and turn it on.
2. Press the Home button (the house icon) on the front of the printer until the Maintenance Mode screen appears (approximately five seconds).
3. Hold down the blank button at the bottom of the screen until a number keypad appears on the screen (approximately two seconds).
4. Press *, **2**, **8**, **6** and **4** (you can use the onscreen keypad or the printer's built-in keypad for this). The printer will beep and **MAINTENANCE** will appear on the screen.
5. Press **8** and **0**.
6. Press the down arrow repeatedly until **PURGE:** (or **FLUSHING:**) appears on the screen.
7. Press **2**, **7**, **8** and **3**. The printer will beep and **MAINTENANCE** will again appear on the screen.
8. Press **9** twice to exit maintenance mode and reboot the printer. You can also use this to start over if you make an error.