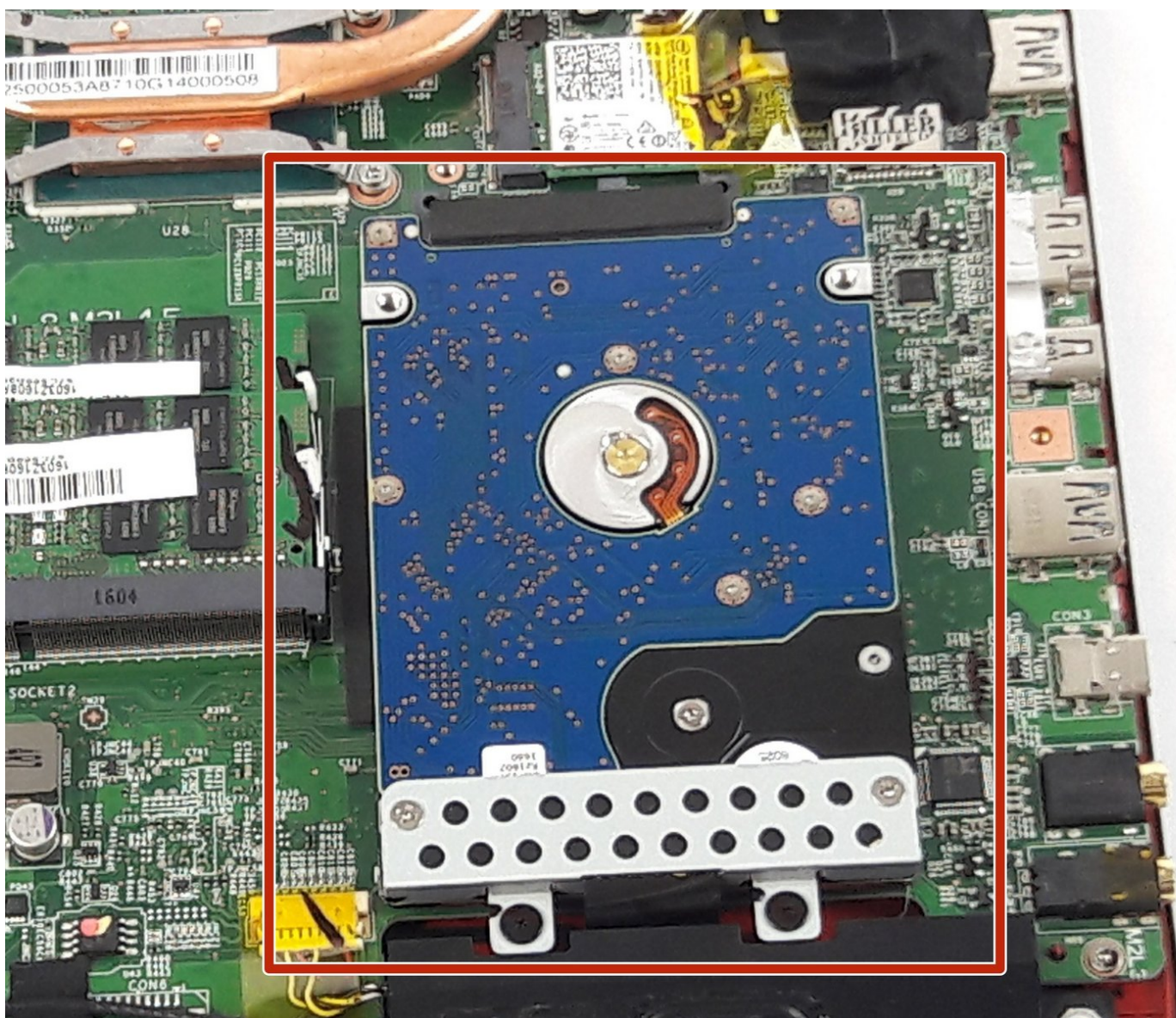




MSI GE62 6QF Apache Pro Hard Drive Replacement

This guide will follow you through replacing the hard drive in the MSI GE62 6QF Apache Pro laptop.

Written By: Justice Owens



INTRODUCTION

Use this guide to remove the hard drive of your device.



TOOLS:

- [Phillips #0 Screwdriver](#) (1)
- [Spudger](#) (1)



PARTS:

- [1 TB SSD / Upgrade Bundle](#) (1)
- [250 GB SSD / Upgrade Bundle](#) (1)
- [500 GB SSD / Upgrade Bundle](#) (1)
- [2 TB SSD / Upgrade Bundle](#) (1)

Step 1 — Optical Drive



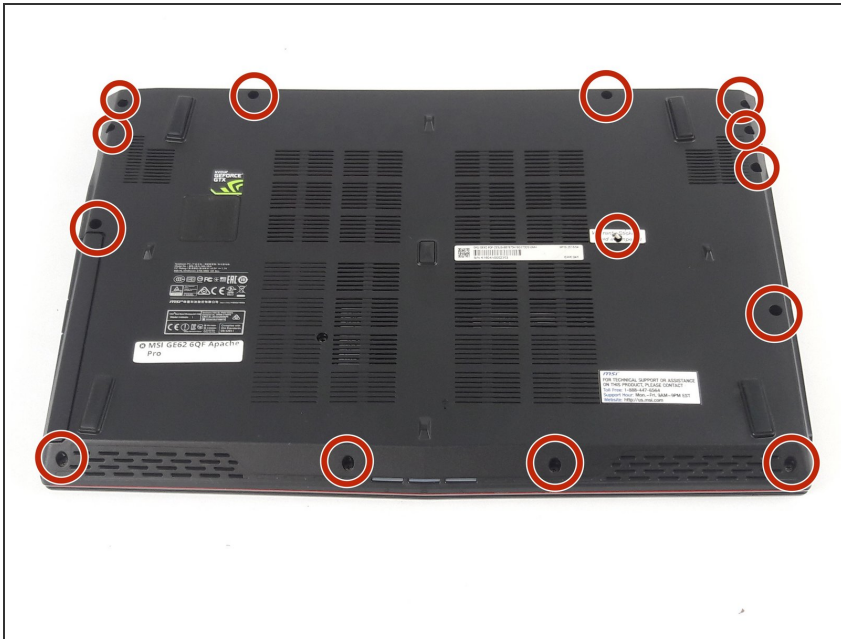
- Remove the Phillips Head (PH) #0 5mm screw securing the optical drive to the bottom case.

Step 2



- Slide Optical Drive out of the computer.

Step 3 — Bottom Case



- Remove the rest of the PH#0 5mm screws on the back of the laptop.

⚠ Removing the screw under the warranty sticker will void any warranty on the device. Be sure to send your laptop in to the appropriate service provider to keep your warranty.

Step 4



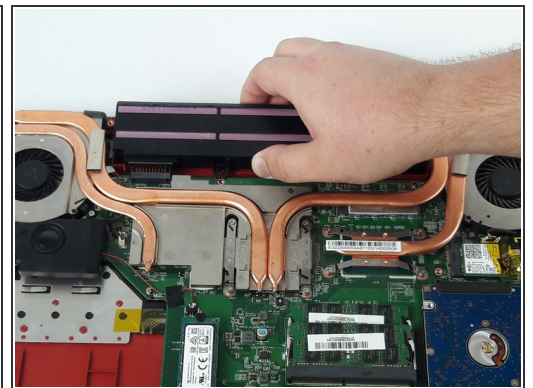
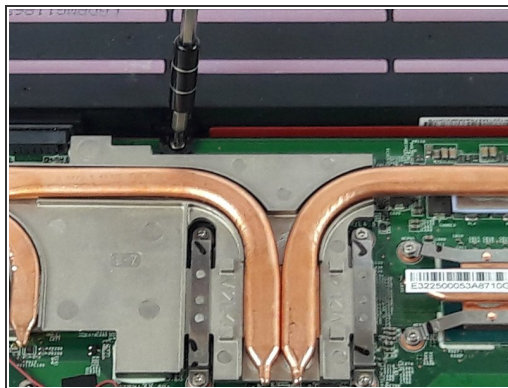
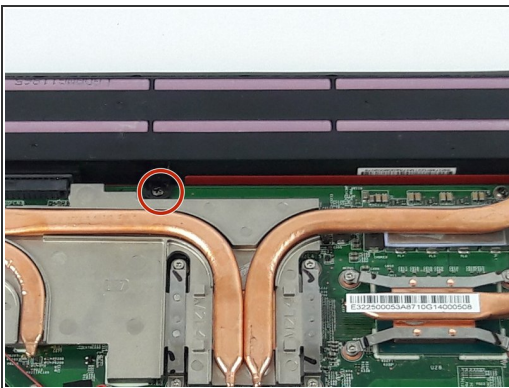
- Remove the three PH #0 2mm screws that were hidden underneath the optical drive.

Step 5



- Use a spudger to run along the seam of the case where the upper and bottom case meet.
- Pry the bottom case and remove from the upper part.

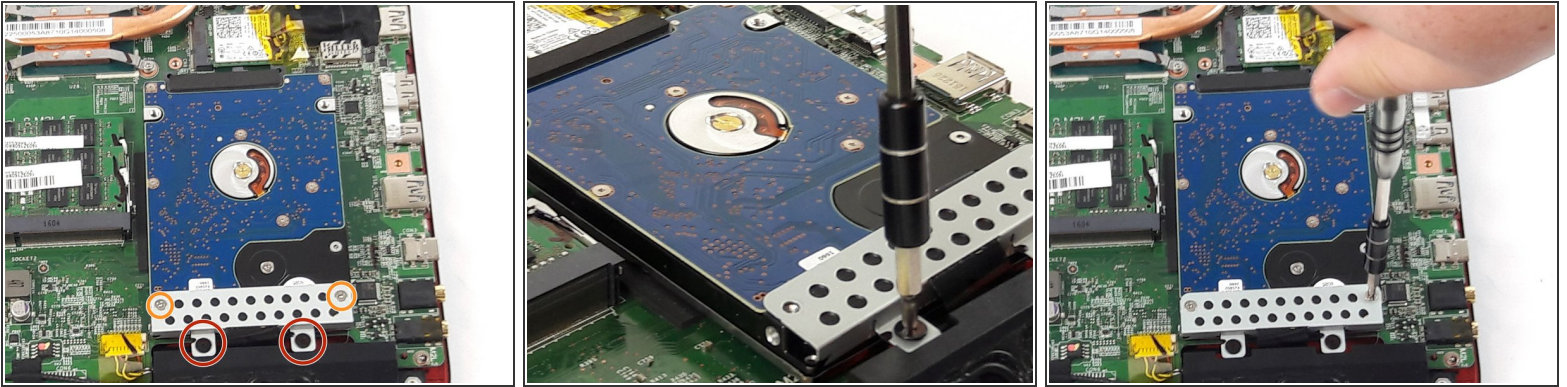
Step 6 — Battery



- Remove the single PH #0 5mm screw holding the battery pack in place.
- Remove the battery by sliding it away from the computer.

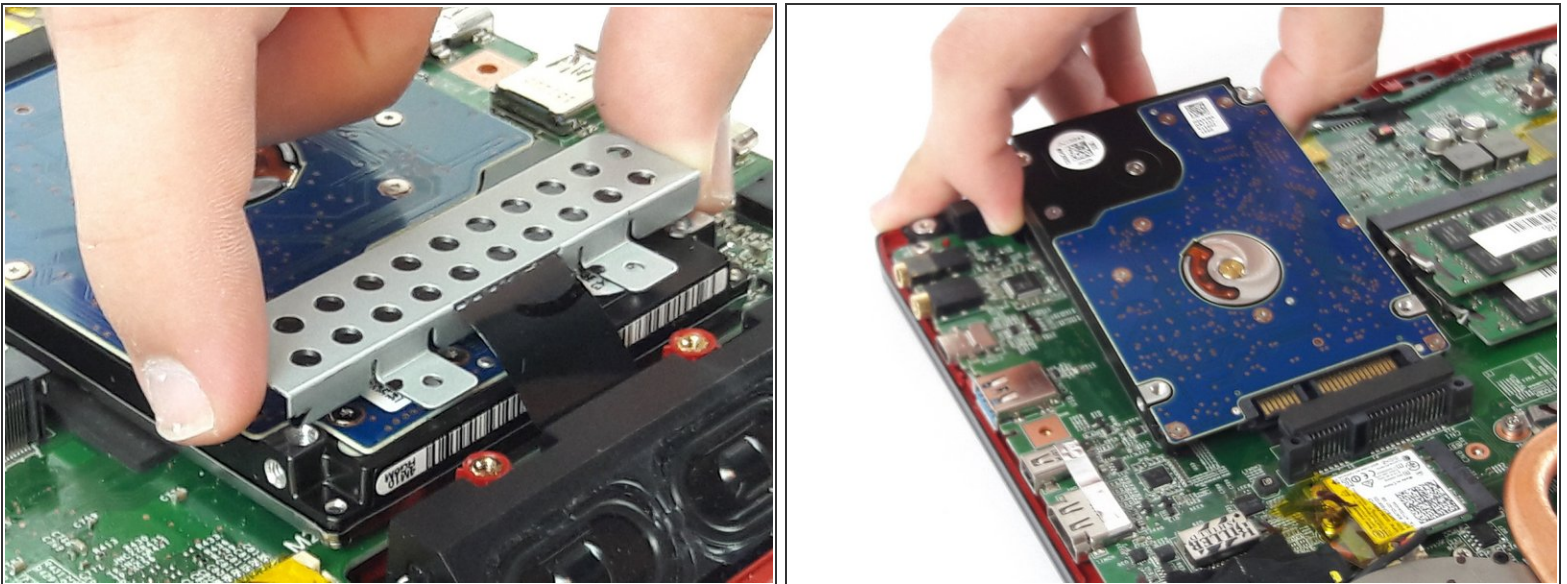
⚠ For guides not regarding the replacement of the battery, this step protects other components from becoming damaged during replacement.

Step 7 — Hard Drive



- Unscrew the two black PH #0 2mm screws holding the lower part the hard drive plate
- Unscrew the two PH #0 4mm screws holding the upper part of the hard drive plate

Step 8



- Remove the hard drive by gently lifting up and pulling the drive out of the connection slot

To reassemble your device, follow these instructions in reverse order.