



# MSI GE62 Apache Pro 004 Web Camera Replacement

MSI GE62 Apache Pro 004 Web Cam replacement

Written By: Majid Al Hashmi



# INTRODUCTION

This guide will show the replacement of the webcam on the MSI Apache Pro 004 laptop.



## TOOLS:

- [Phillips #00 Screwdriver](#) (1)
  - [Phillips #1 Screwdriver](#) (1)
  - [Metal Spudger](#) (1)
  - [Spudger](#) (1)
-

## Step 1 — Battery



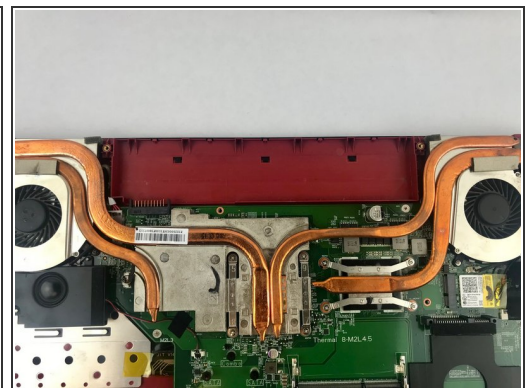
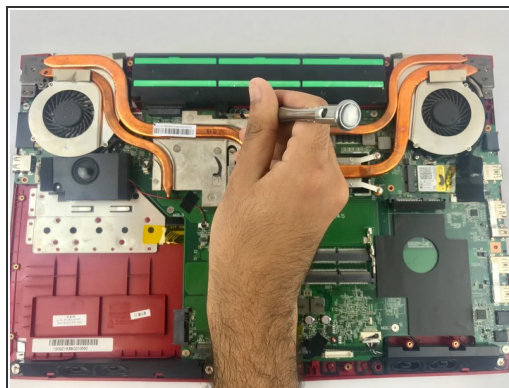
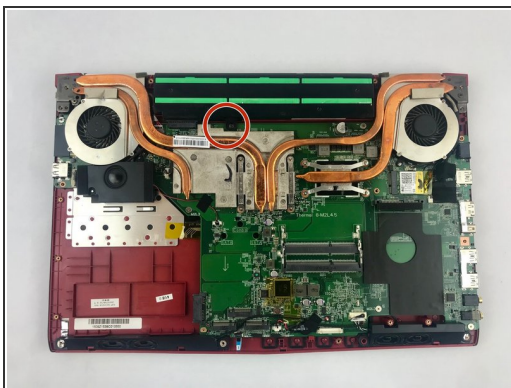
- Start with the bottom of the laptop facing up.

## Step 2



- Remove the 15 screws from the bottom of the laptop with a PH1 screwdriver.
- Remove the bottom plate
- ⓘ Keep track of all the screws and which slot they came from, as they slightly differ. We recommend this system: lay out on a piece of paper and pretending the paper is the device. Place the screws on the paper approximately where they would go

## Step 3



- Remove the screw holding down the battery with a PH1 screwdriver.
- Pull out the battery.

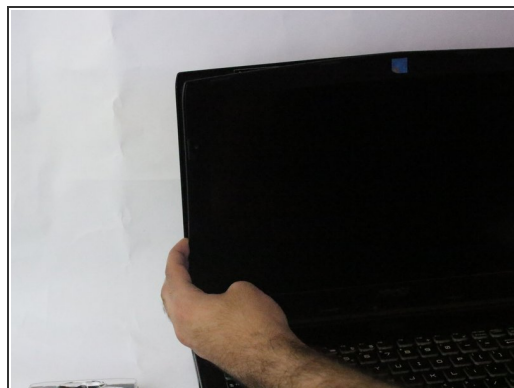
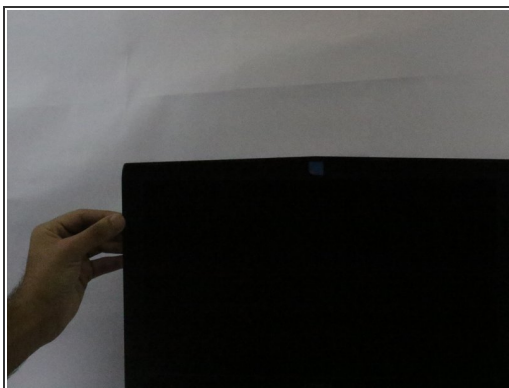
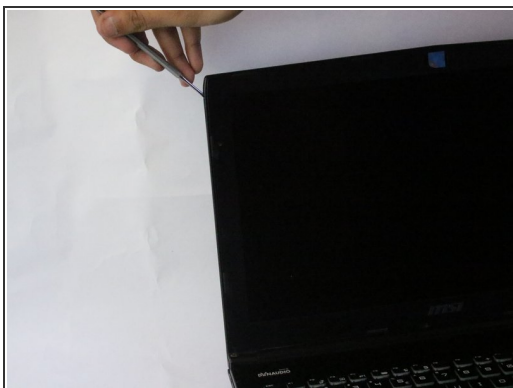


## Step 4 — Web Camera



- Flip over the laptop and open it.

## Step 5



- Slide a metal opener tool along the outside edges of the front screen panel to start to separate it from the back screen panel.

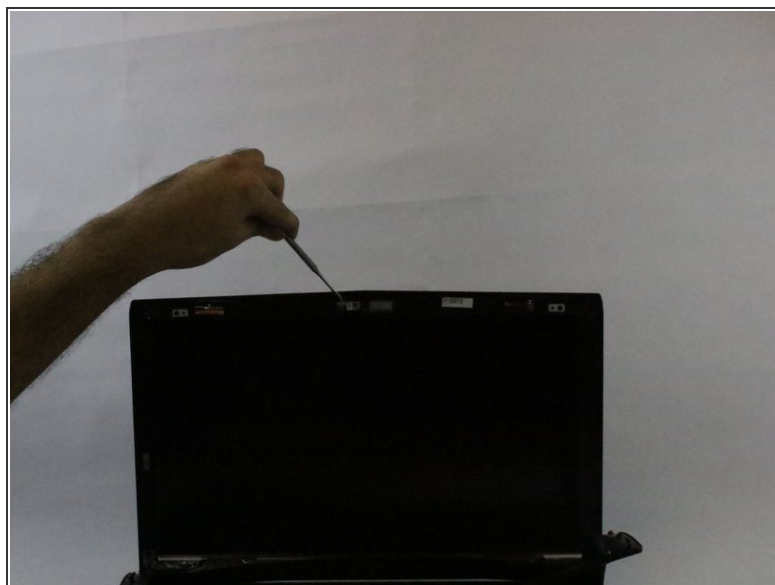
 You may need to apply some firm pressure to get it started.

## Step 6



- Once it has started to separate, gently pull off the screen panel by working along the edge, and set it aside.

## Step 7



- Locate the WebCam on the middle of the device.
- Slide a metal opener tool to remove the Webcam

To reassemble your device, follow these instructions in reverse order.