



MSI GE70 2PE Apache Pro Battery Replacement

This guide can be used to help with replacing a dead or faulty battery for the MSI GE70 2PE Apache Pro.

Written By: Joseph Welch



INTRODUCTION

This guide can be used to help you replace a dead or faulty battery in your MSI GE70 2PE Apache Pro. This is a straight-forward repair that requires no use of tools.

Step 1 — Battery



- Turn over the laptop so the battery compartment is facing up.

Step 2



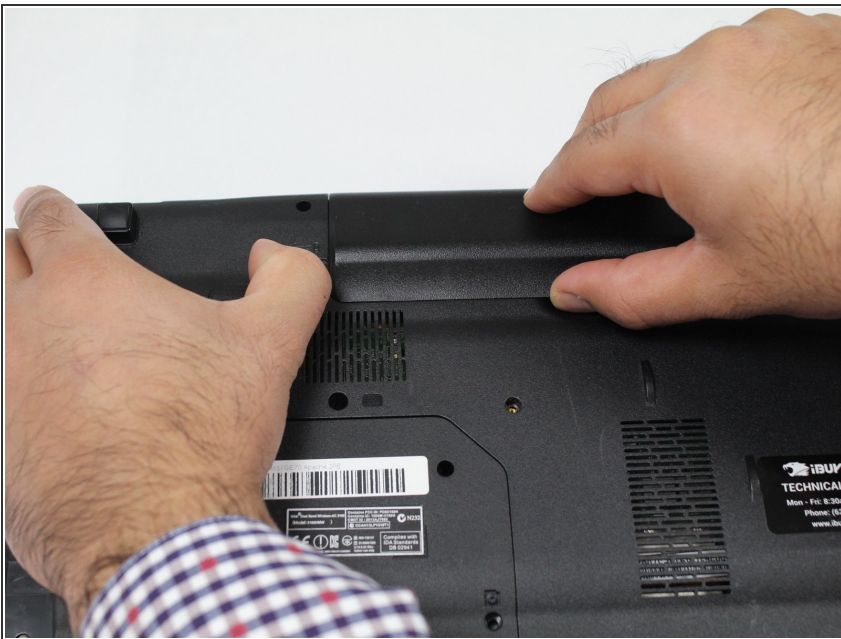
- Push the right latch all the way to the right until it clicks into place.

Step 3



- Pull and hold the left latch.

Step 4



- Pry the battery upward using the indent.

Step 5



- Continue to pull the battery until it is free of the casing.

To reassemble your device, follow these instructions in reverse order.