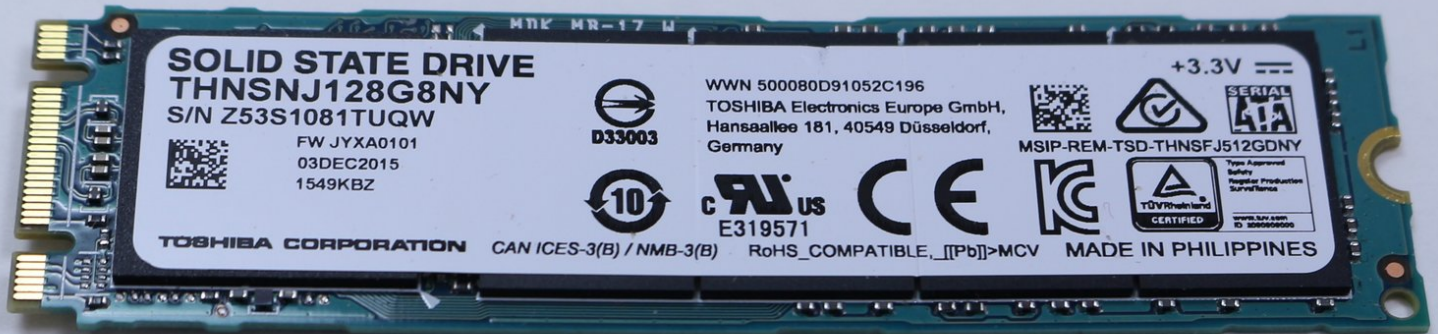




MSI GE72 6QF Apache Pro SSD Replacement

A Step by step guide to replace the SSD in your MSI GE72 6QF Apache Pro

Written By: Tanmay Kumar



INTRODUCTION

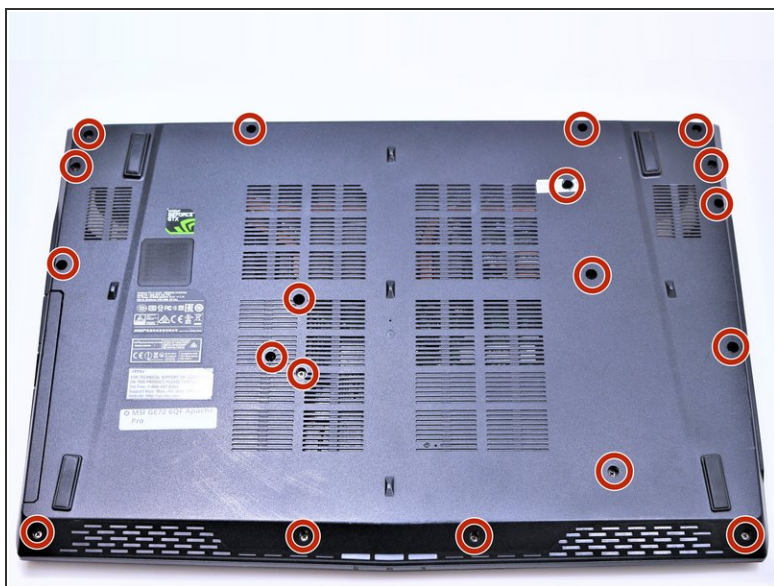
This guide will teach you how to replace the SSD on your MSI GE72 6QF Apache Pro




TOOLS:

- [Phillips #1 Screwdriver](#) (1)
-

Step 1 — Battery



 Make sure the laptop is off and unplugged (not charging).

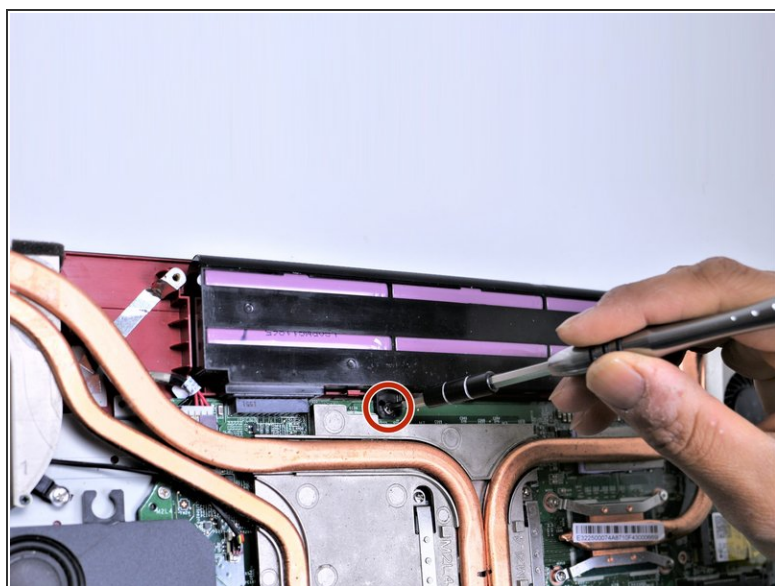
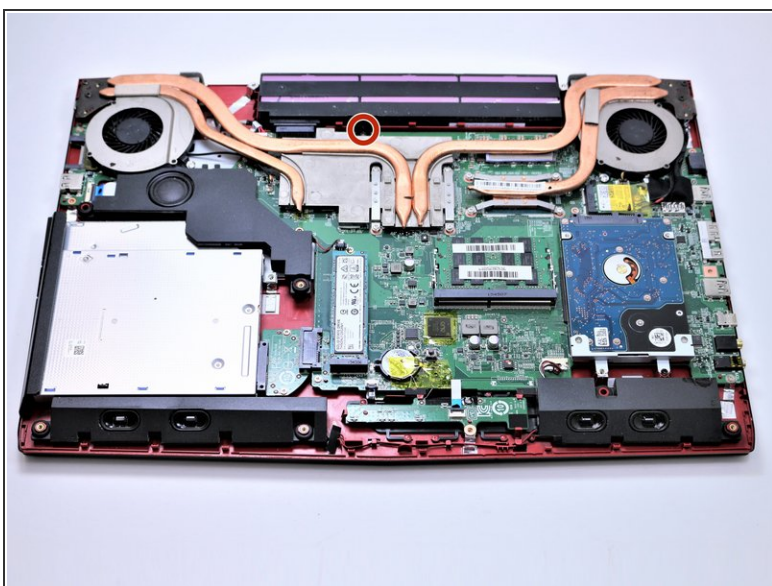
- With the laptop closed and upside down, unscrew the nineteen 5.5mm Phillips #1 screws that keep the back cover in place.

Step 2



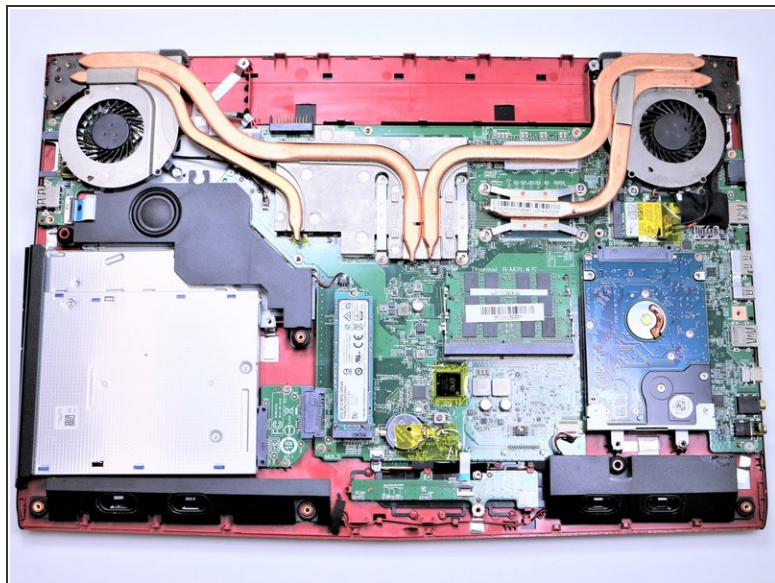
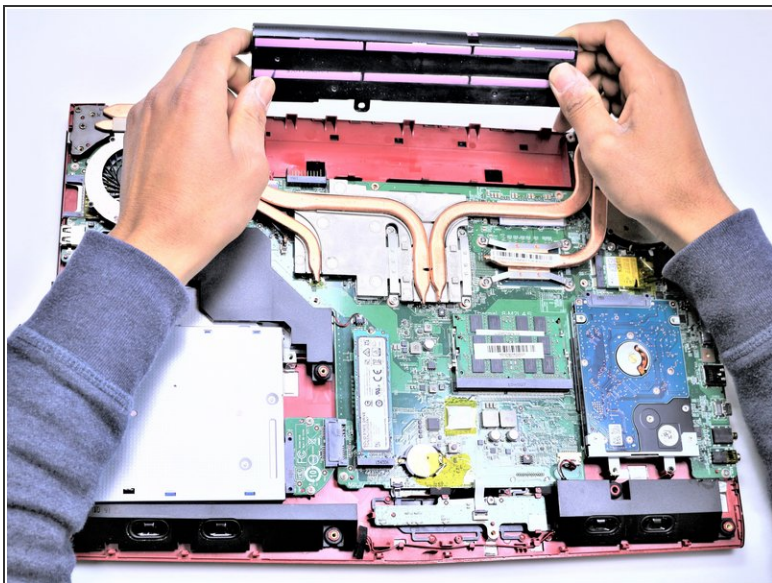
- Using your fingers, gently loosen the edges of all four sides of the back cover.
- Gently pull off the back cover.

Step 3



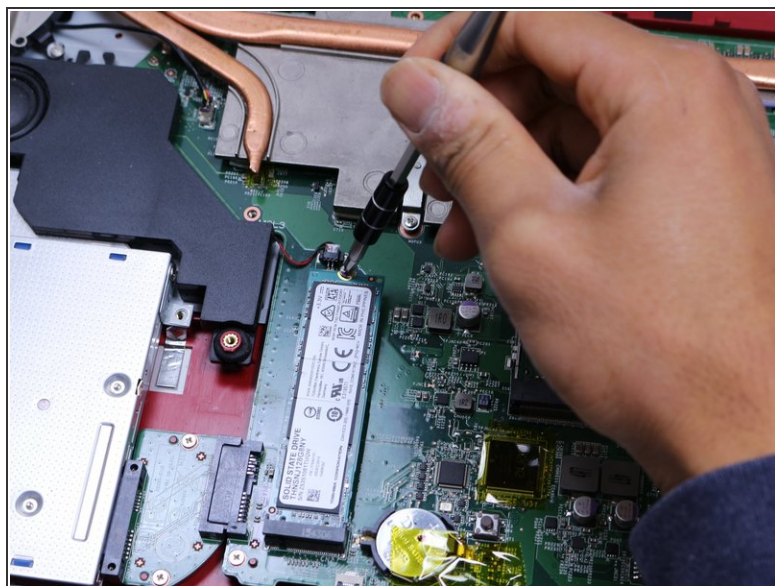
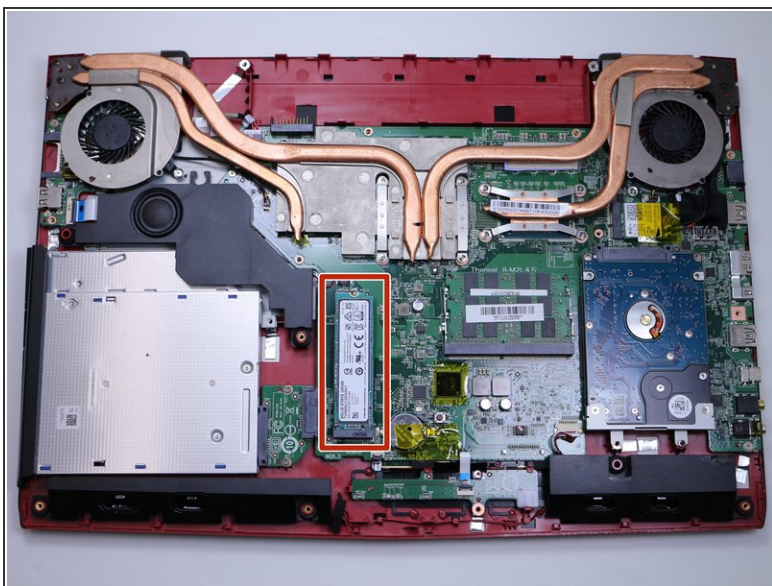
- Unscrew the single 5.5mm Phillips #1 screw keeping the battery secure.

Step 4



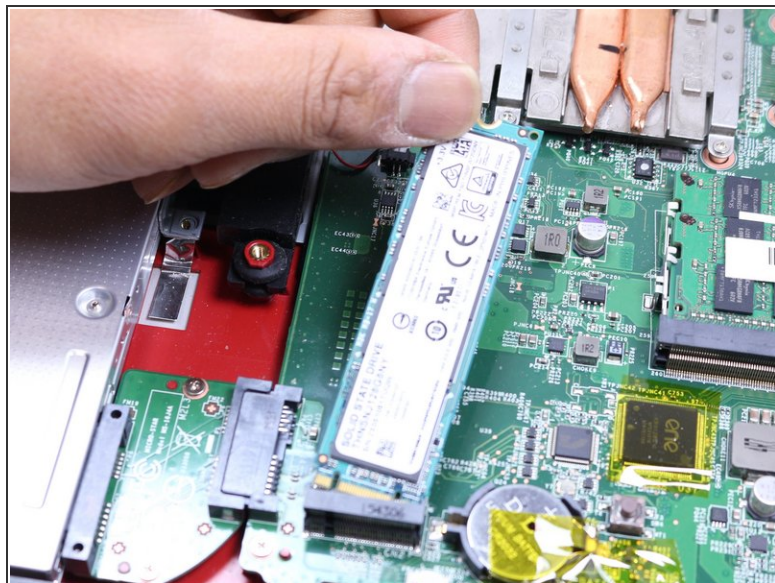
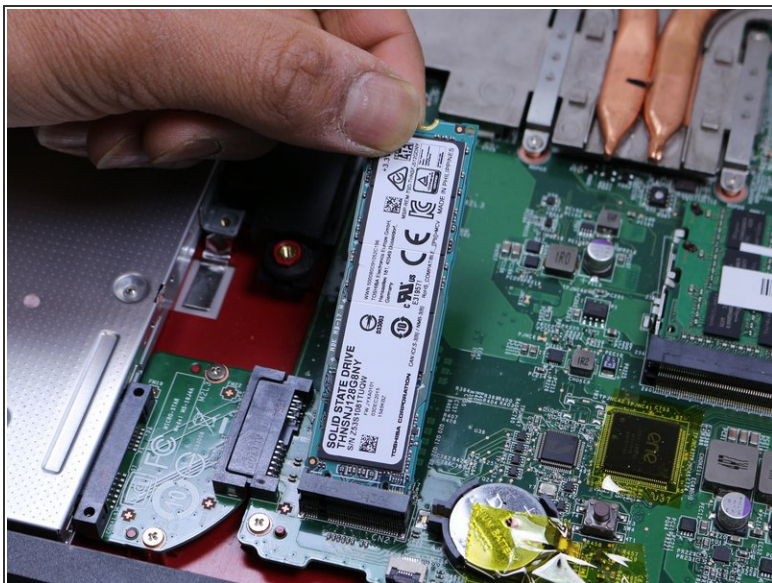
- Grab the battery with your fingers and gently pull it up and away from the rest of the laptop.

Step 5 — SSD



- Remove the single 5.5mm Phillips #1 screw attaching the SSD to the laptop.

Step 6



- Pull out the SSD by gently wiggling it from side to side until it comes out.
- ⓘ If the old SSD you removed contains the operating system, then the new SSD must also contain an operating system.

To reassemble your device, follow these instructions in reverse order.