



MSI GP60 2PE Leopard Fan Replacement

This guide will help you replace your fan with a new one.

Written By: Zoey Calcagno



INTRODUCTION

Looking to replace your fan? This guide will help you do so with only a couple steps.



TOOLS:

- [Phillips #00 Screwdriver](#) (1)
-

Step 1 — Back Panel



- Flip the device over so the back is facing up.

Step 2



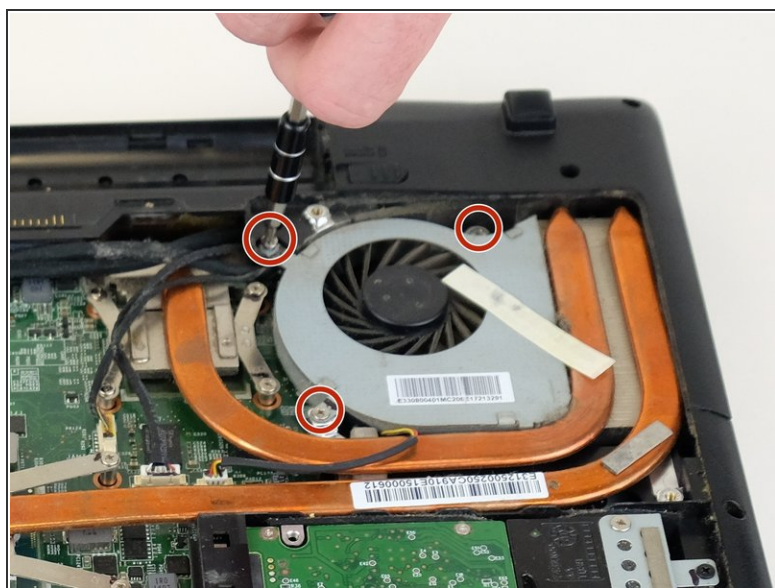
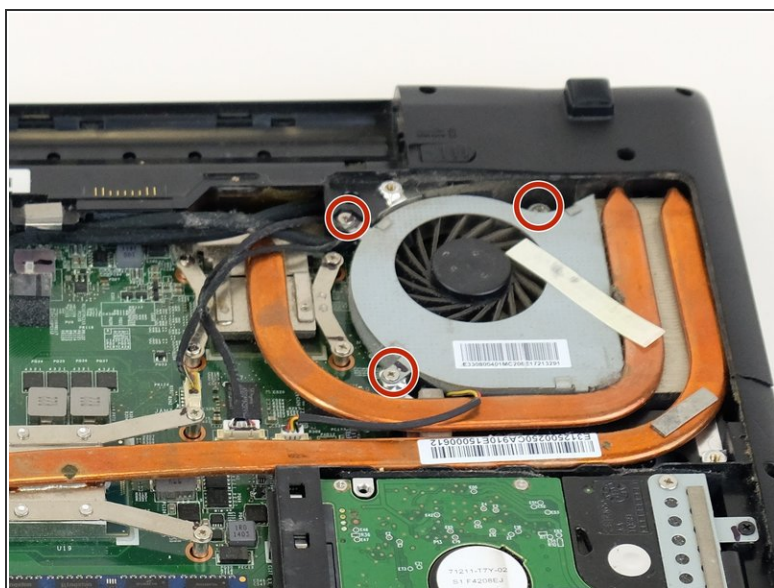
- Remove the four 5mm screws from the back of the device using a Phillips #00 screwdriver.
- ⓘ There is a screw located under the battery; lift the battery up to access it.

Step 3



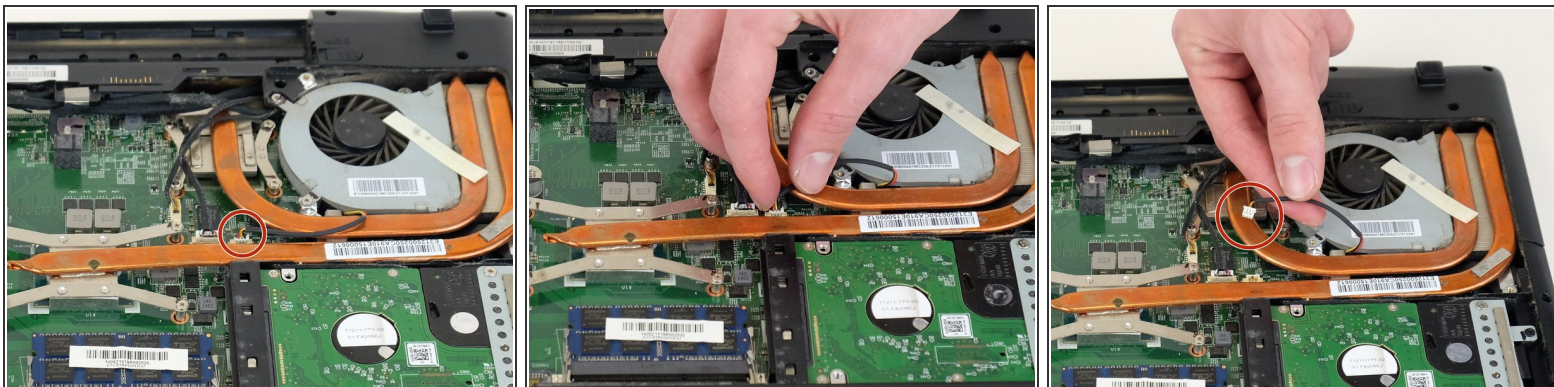
- Once all four screws are removed, lift the back off.

Step 4 — Fan



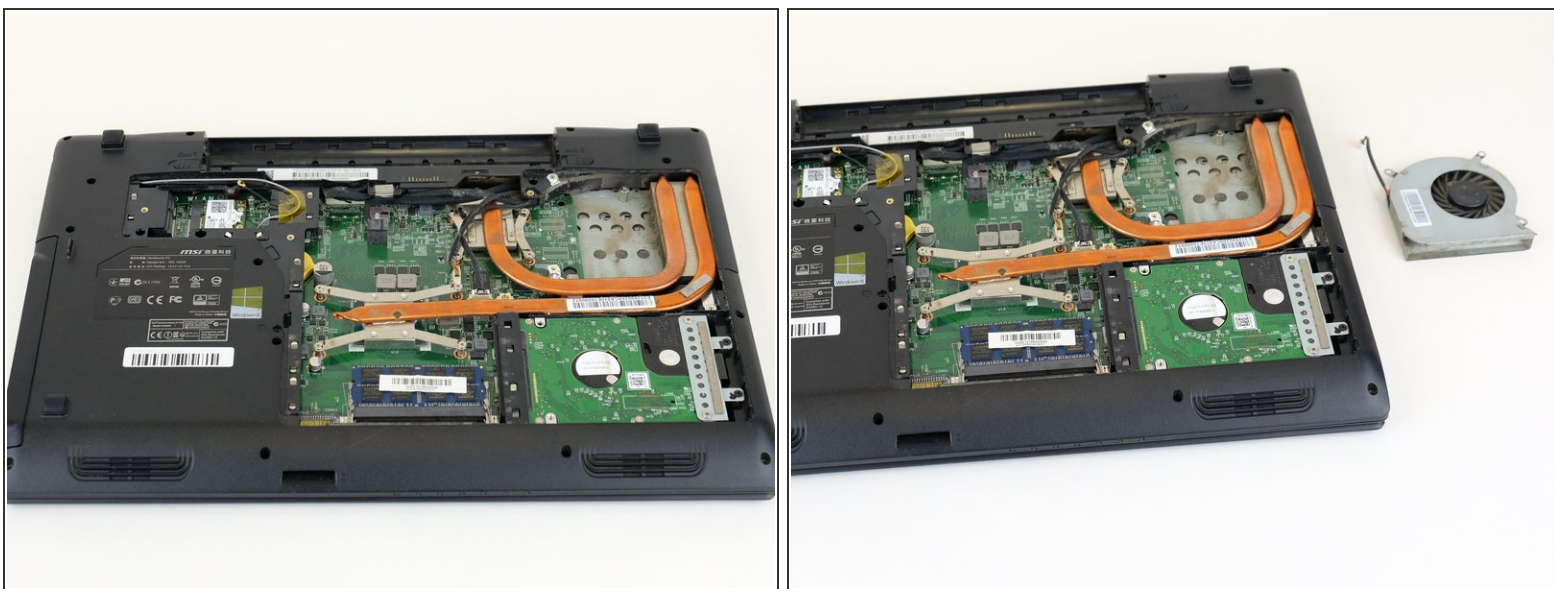
- Remove the three 5 mm screws from the fan with a Phillips #00 screwdriver.

Step 5



- Pull the wire on the bottom left of the fan out of the socket.
- ⓘ Pull the wire gently; pulling too hard could damage the wire.

Step 6



- Remove the fan.

To reassemble your device, follow these instructions in reverse order.