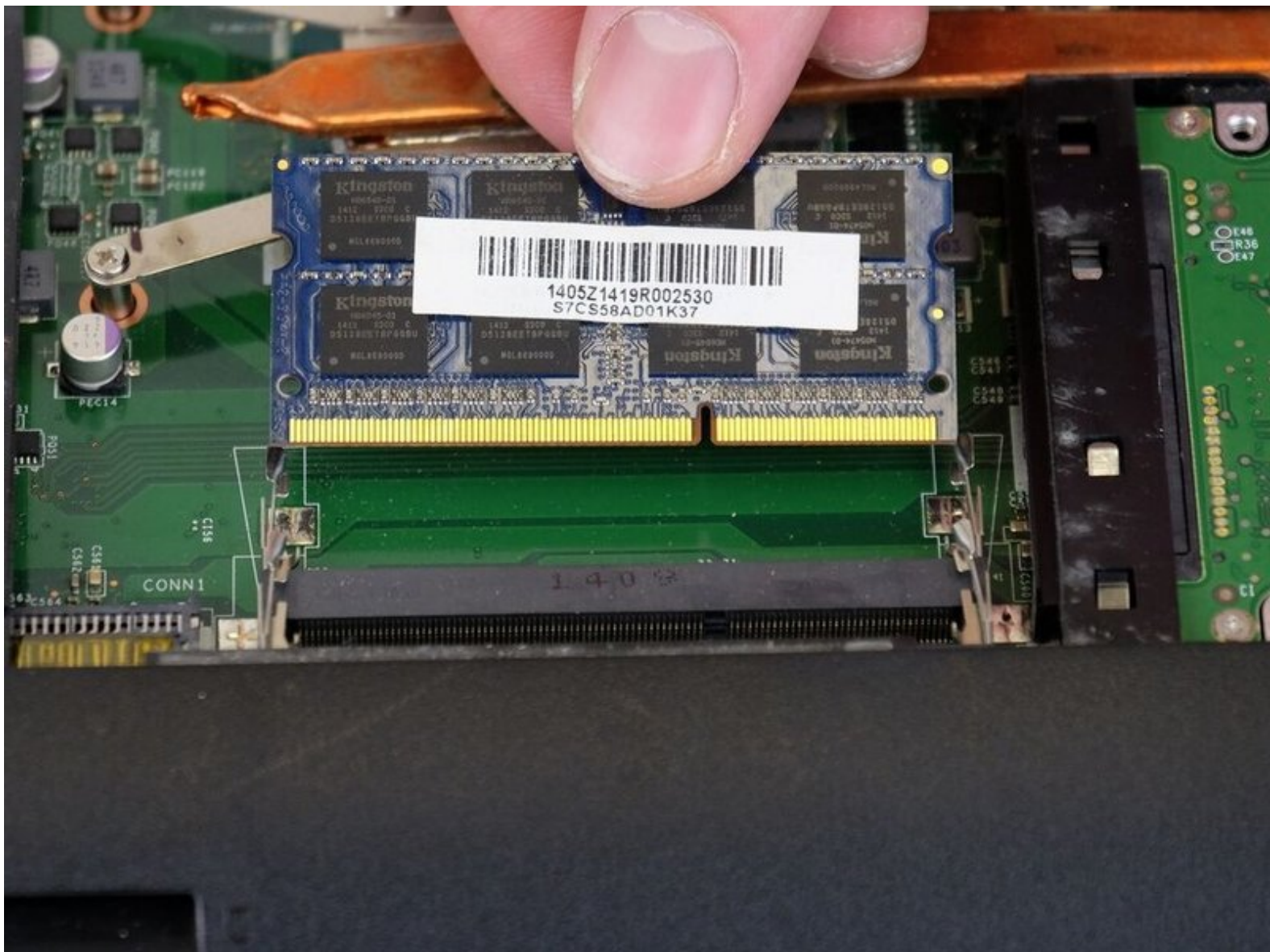




MSI GP60 2PE Leopard RAM Replacement

A guide to replace the RAM in your device.

Written By: Zoey Calcagno



INTRODUCTION

Is your computer running slow, or do you need more memory? Use this guide to replace the RAM in your device.



TOOLS:

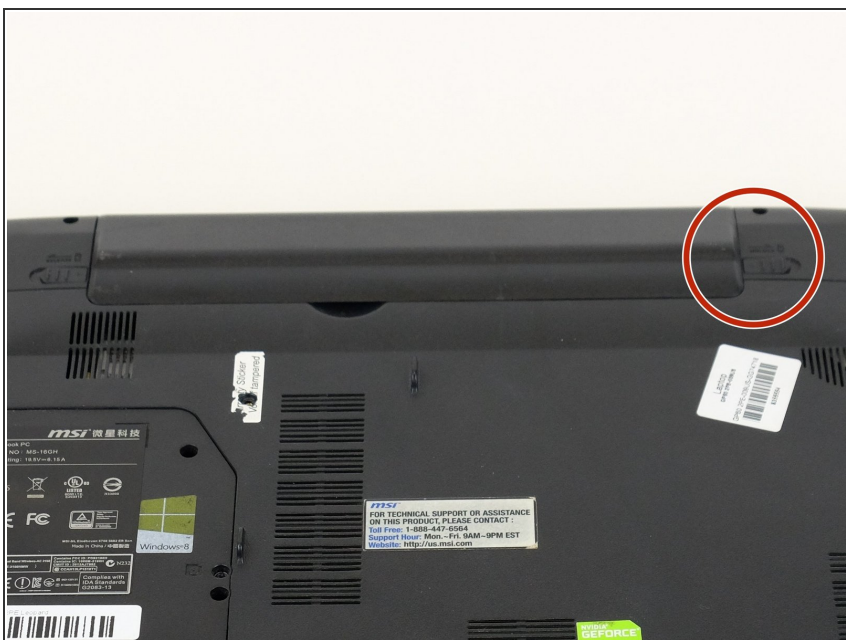
- [Phillips #00 Screwdriver](#) (1)
-

Step 1 — Battery



- Flip MSI GP60 2PE Leopard, so that the back is facing up.

Step 2



- Find the unlock tab located on the upper right side of the device, then slide it to the right.

Step 3



- Slide and hold the release tab on the left side of the battery, so that you can remove the battery.

Step 4



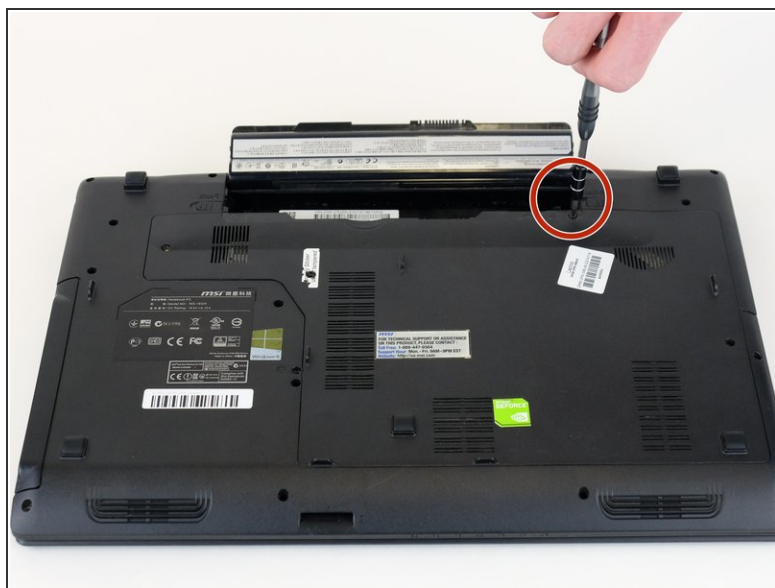
- While holding the release tab, remove the battery slowly.

Step 5 — Back Panel



- Flip the device over so the back is facing up.

Step 6



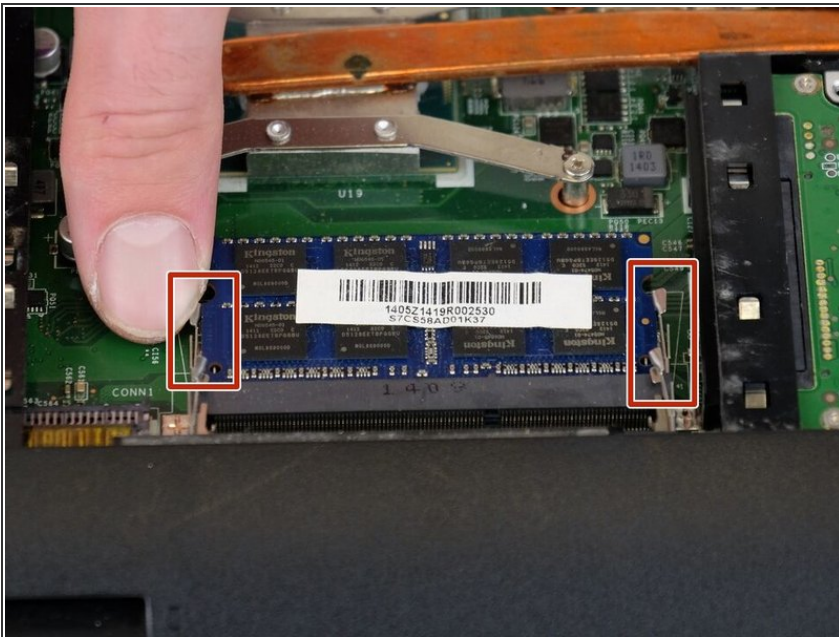
- Remove the four 5mm screws from the back of the device using a Phillips #00 screwdriver.
- i There is a screw located under the battery; lift the battery up to access it.

Step 7



- Once all four screws are removed, lift the back off.

Step 8 — RAM



- Press the tabs on the side of the RAM to remove it.

Step 9



- Slide the RAM out of the slot carefully.

To reassemble your device, follow these instructions in reverse order.

This document was last generated on 2019-07-20 08:58:30 AM.