



MSI GS60 Ghost Pro 4K Gold Edition Battery Replacement

How to replace the battery in the MSI GS60 Ghost Pro 4K Gold Edition.

Written By: Stephen Felix



INTRODUCTION

This guide will show you how to remove and replace the battery in the MSI GS60 Ghost Pro 4K Gold Edition laptop.



TOOLS:

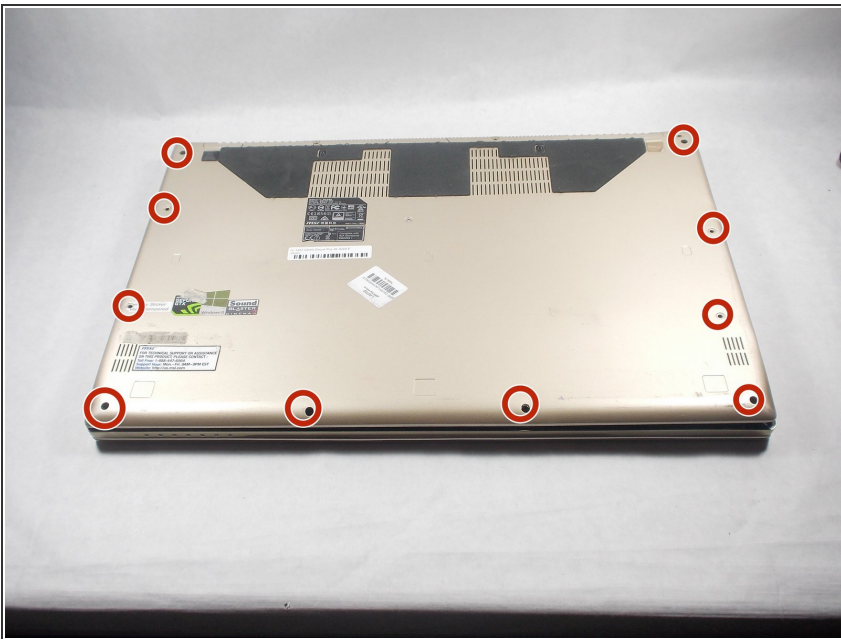
- [iFixit Opening Tools](#) (1)
 - [Phillips #0 Screwdriver](#) (1)
-

Step 1 — Back Panel



- Place this device back panel facing up.

Step 2



- Using the screwdriver, unscrew the highlighted 1.2mm Phillips head #0 screws which secure the back panel into place.

Step 3



- Using the plastic opening tools, separate the back panel from the rest of the device.
- Do this by firmly pressing the head of the tool into the space between the back panel, and the rest of the device.

Step 4 — Battery



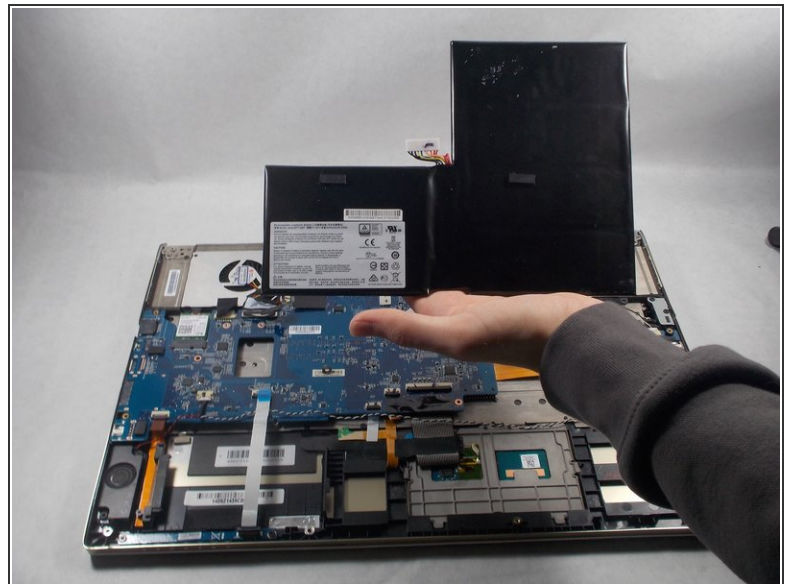
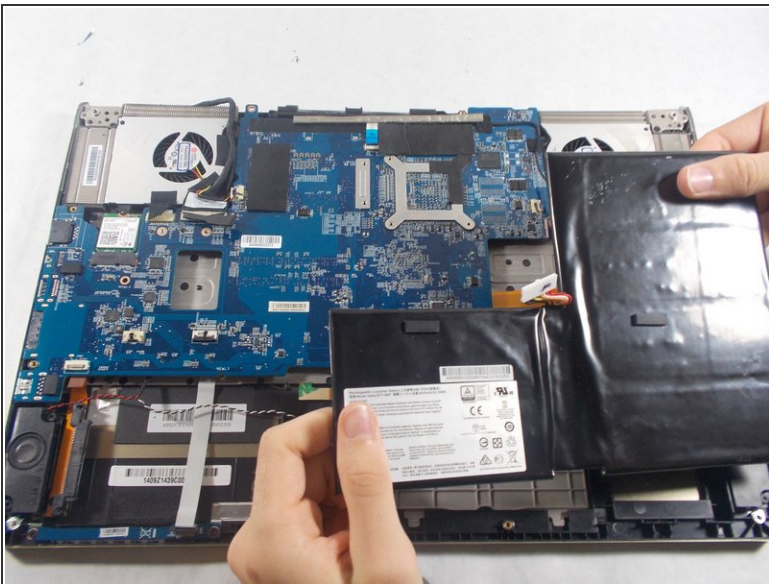
- Pull the back panel off.

Step 5



- Notice the L-shaped battery in the lower right corner of the opened laptop.
- Disconnect the battery from the slot it is connected to. You'll need to push on the sides of the clip and pull.

Step 6



- Lift up the battery with your fingers and remove it from the laptop.
- Place the battery away from the laptop in a safe spot and insert your new battery by hooking it up to the slot you previously disconnected the old battery from.

To reassemble your device, follow these instructions in reverse order.