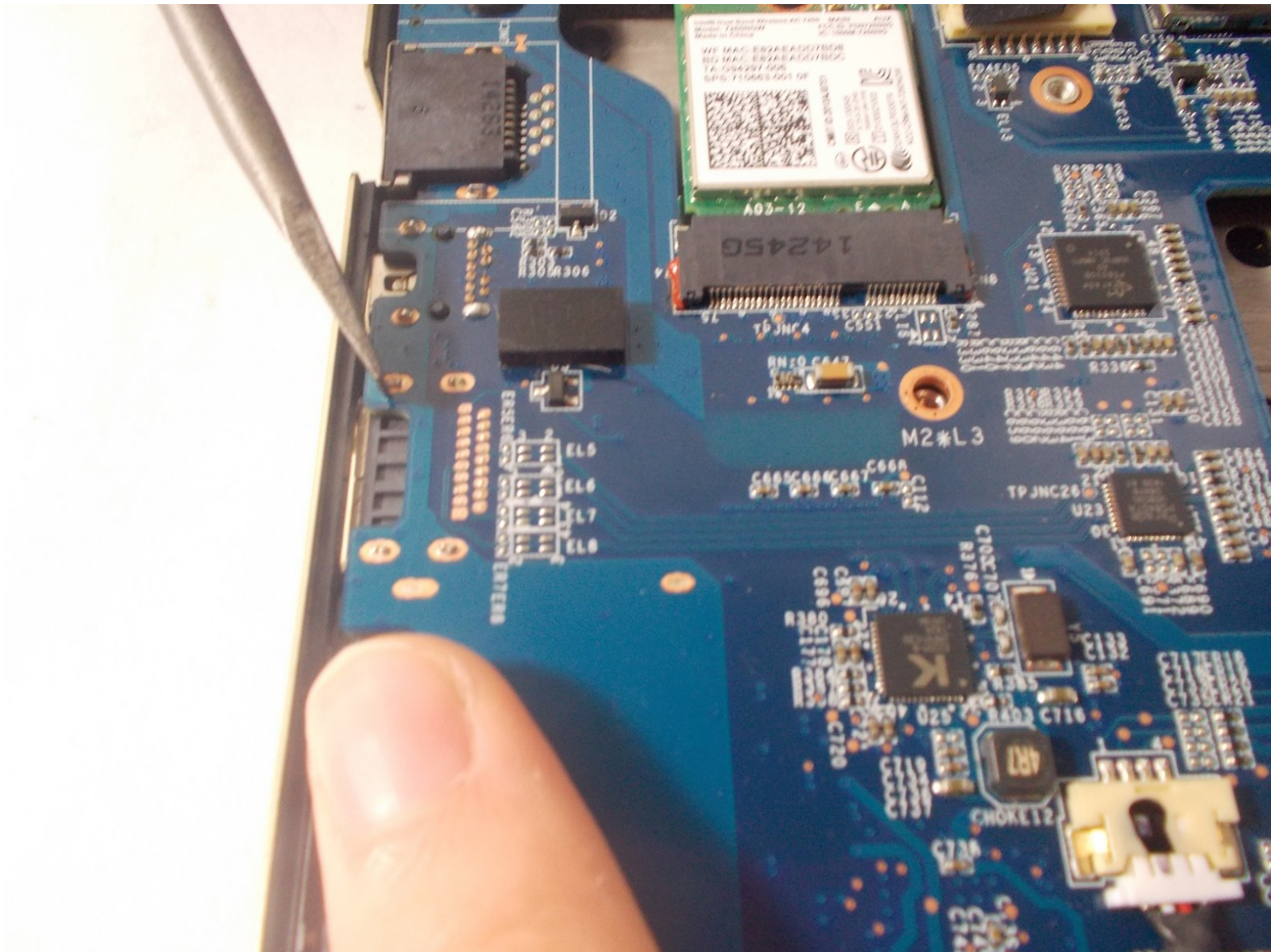




MSI GS60 Ghost Pro 4K Gold Edition HDMI Port Replacement

How to replace the HDMI port in the MSI GS60 Ghost Pro 4K Gold Edition.

Written By: Jordan Williams



INTRODUCTION

This guide will detail on how to replace the HDMI port in the MSI GS60 Ghost Pro 4K Gold Edition.



TOOLS:

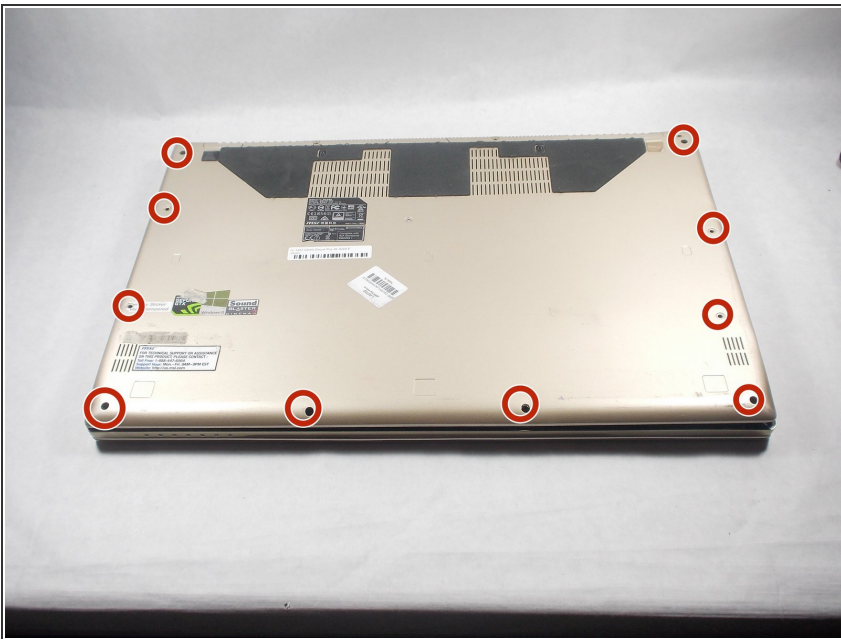
- [iFixit Opening Tools](#) (1)
 - [Phillips #0 Screwdriver](#) (1)
 - [Soldering Iron](#) (1)
-

Step 1 — Back Panel



- Place this device back panel facing up.

Step 2



- Using the screwdriver, unscrew the highlighted 1.2mm Phillips head #0 screws which secure the back panel into place.

Step 3



- Using the plastic opening tools, separate the back panel from the rest of the device.
- Do this by firmly pressing the head of the tool into the space between the back panel, and the rest of the device.

Step 4 — Battery



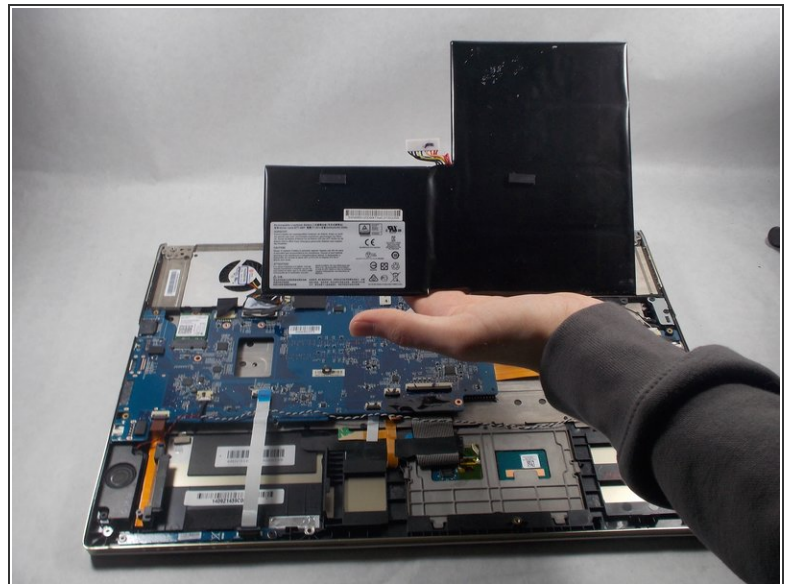
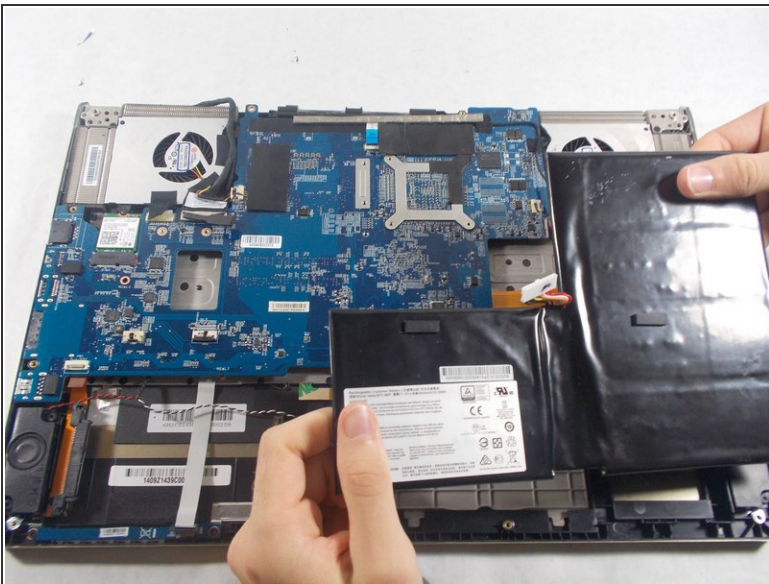
- Pull the back panel off.

Step 5



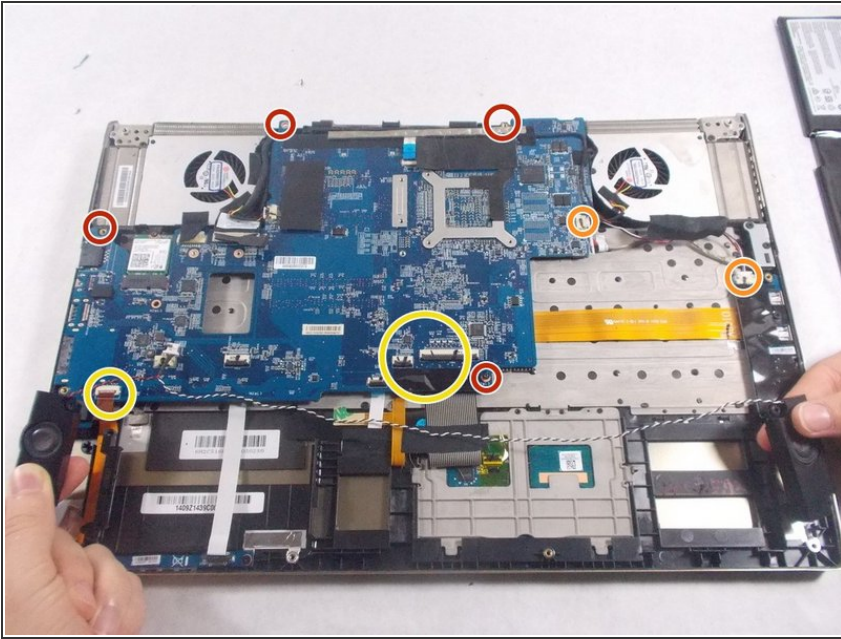
- Notice the L-shaped battery in the lower right corner of the opened laptop.
- Disconnect the battery from the slot it is connected to. You'll need to push on the sides of the clip and pull.

Step 6



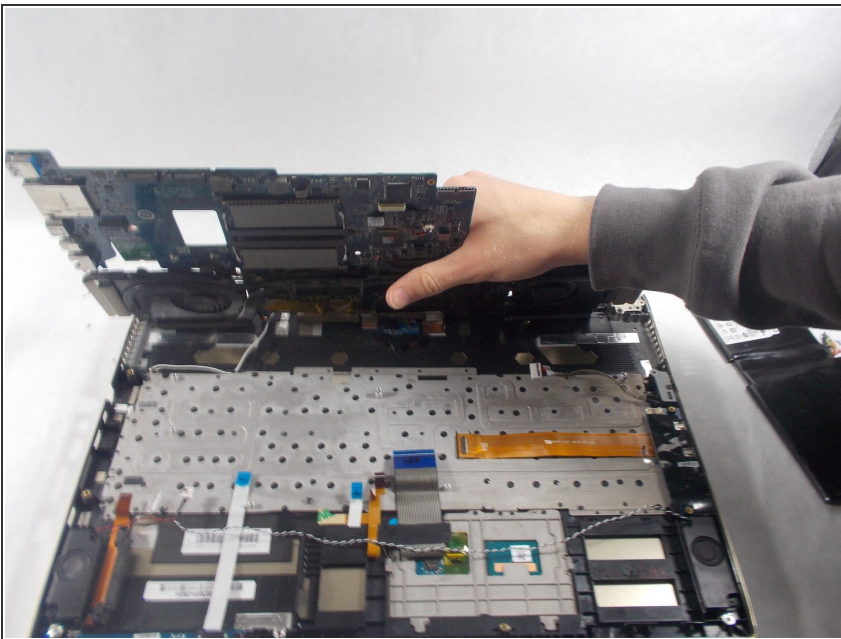
- Lift up the battery with your fingers and remove it from the laptop.
- Place the battery away from the laptop in a safe spot and insert your new battery by hooking it up to the slot you previously disconnected the old battery from.

Step 7 — MotherBoard



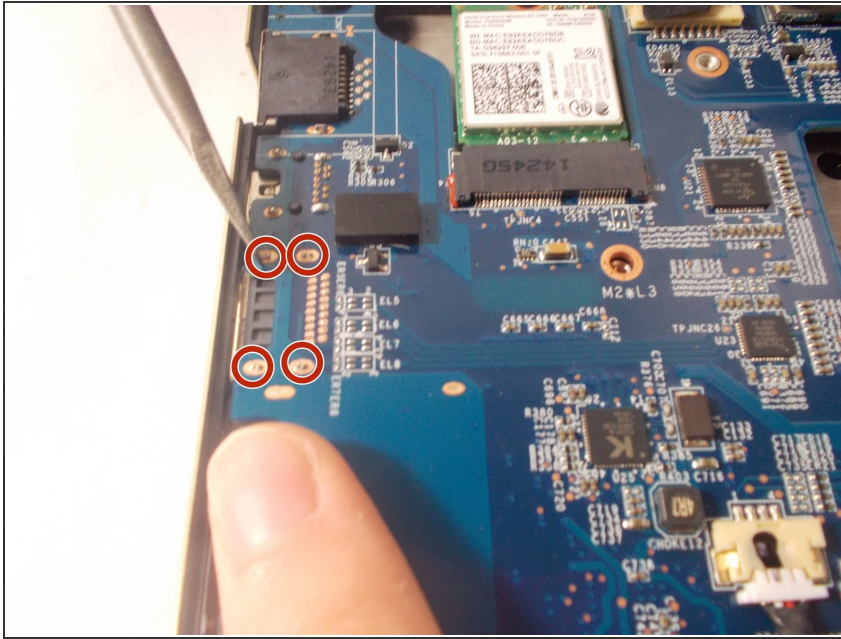
- Unscrew the 4 1.2mm Phillips #0 screws connecting the motherboard to the laptop case.
- Disconnect the wires connecting to the motherboard to the USB ports.
- Disconnect the ribbon cables connecting the keyboard, and track pad of the device.

Step 8



- Lift the motherboard up and out of the device casing.

Step 9 — HDMI Port



- Desolder the connections between the HDMI port and the motherboard.
- ⚠ Be careful not to damage other components of the motherboard during the process!
- ℹ For tips on soldering, check out iFixit's [How to Solder and Desolder Connections](#) guide.

To reassemble your device, follow these instructions in reverse order.