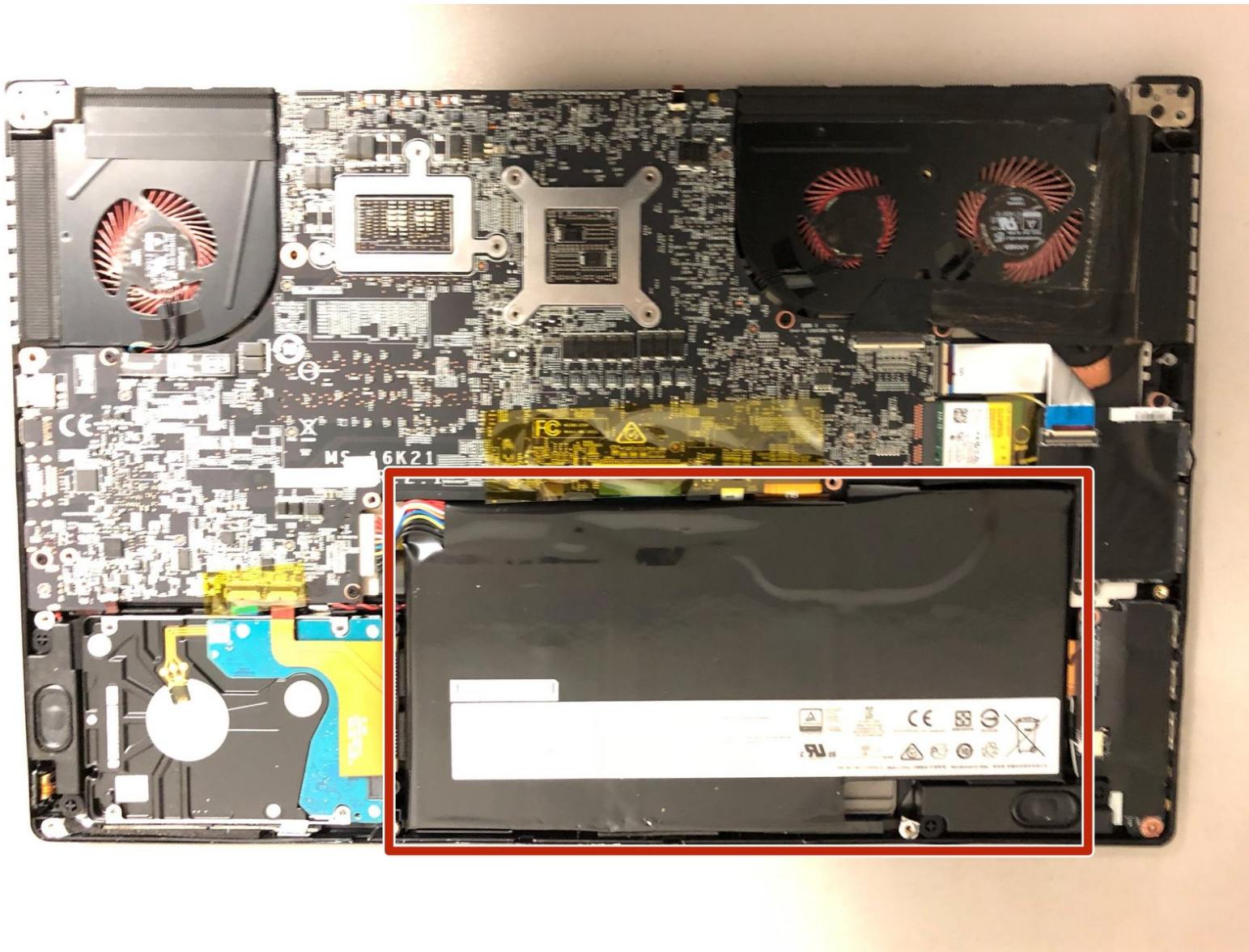




MSI GS63VR 6RF Stealth Pro Battery Replacement

Replacing the battery of the MSI GS63VR 6RF Stealth Pro.

Written By: Jay Etzkorn



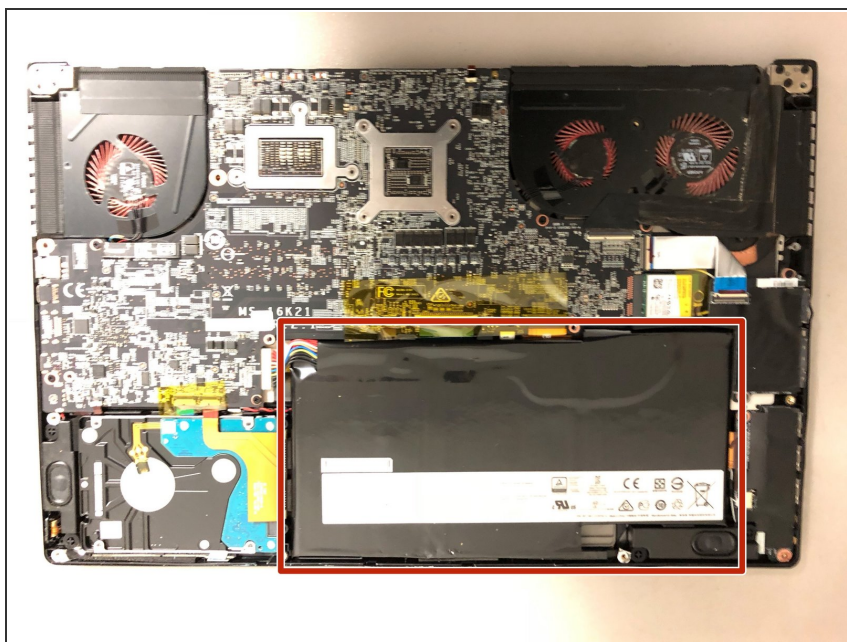
INTRODUCTION

This guide will help you replace the battery in your MSI GS63VR 6RF Stealth Pro. You will need to have purchased the replacement battery prior if you are replacing your battery.

TOOLS:

- [Spudger](#) (1)
 - [Phillips #00 Screwdriver](#) (1)
 - [Tweezers](#) (1)
-

Step 1 — Battery



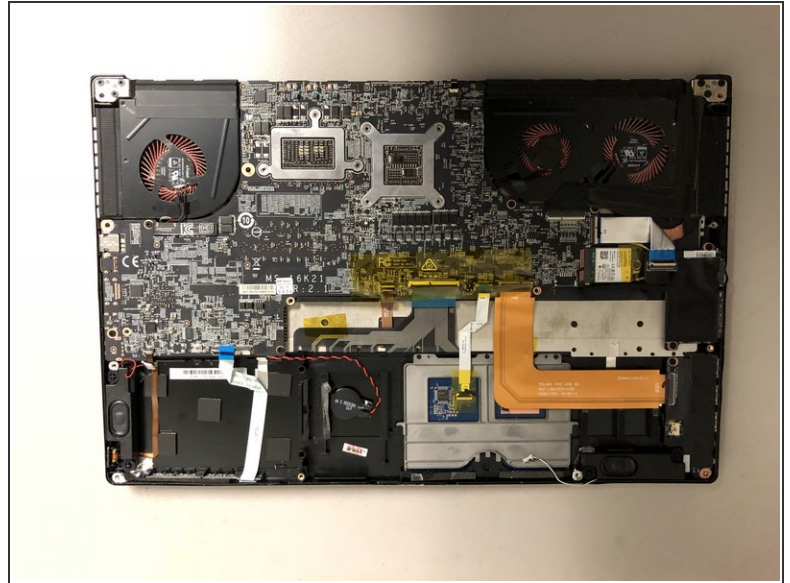
- ✦ This is where the battery is located
 - Gently pry the battery from laptop.
- ⓘ The battery is attached to the laptop with a strong adhesive.

Step 2



- Lift the battery from laptop.
- ⚠ Do not yank, tug, or pull as the battery is still attached to the laptop by way of wires.

Step 3



- Use tweezers to gently wiggle the connecting wires free.

To reassemble your device, follow these instructions in reverse order.