



# MSI GS63VR 6RF Stealth Pro RAM or NVMe Replacement

Replacing RAM or NVMe in the Stealth Pro. In order to do this, you'll have to remove some other parts that get in the way.

Written By: Zachery Friedman



---

## INTRODUCTION

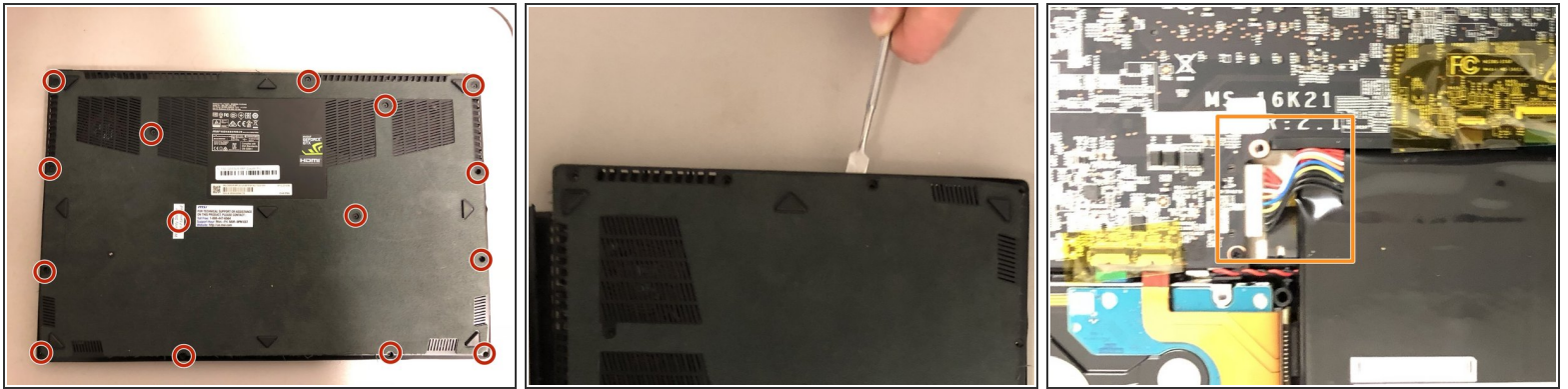
Replacing RAM or NVMe in the Stealth Pro. In order to replace the RAM or NVMe in the Stealth Pro, you'll have to remove some other parts that get in the way.

---

### TOOLS:

- [Pick Tool](#) (1)
  - [iFixit Opening Tools](#) (1)
  - [Spudger](#) (1)
  - [Phillips #00 Screwdriver](#) (1)
  - [Tweezers](#) (1)
-

## Step 1 — Hard Drive



Turn off the laptop before proceeding.

- Unscrew the 15 screws on the bottom panel using a Phillips #00 screwdriver.
- Pry open the back cover with a plastic prying tool.

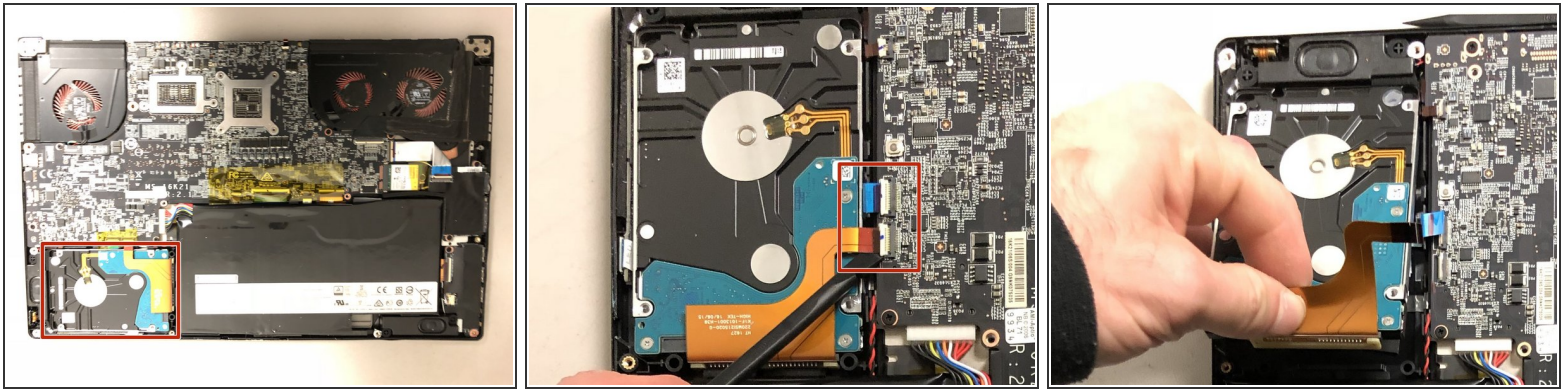


Unplug the battery cable from the motherboard to prevent a ground fault. Either use your hand or a pair of tweezers to unplug the battery cable.



Too much pressure from the spudger can break the clips that secure the back panel, but some flex is not dangerous.

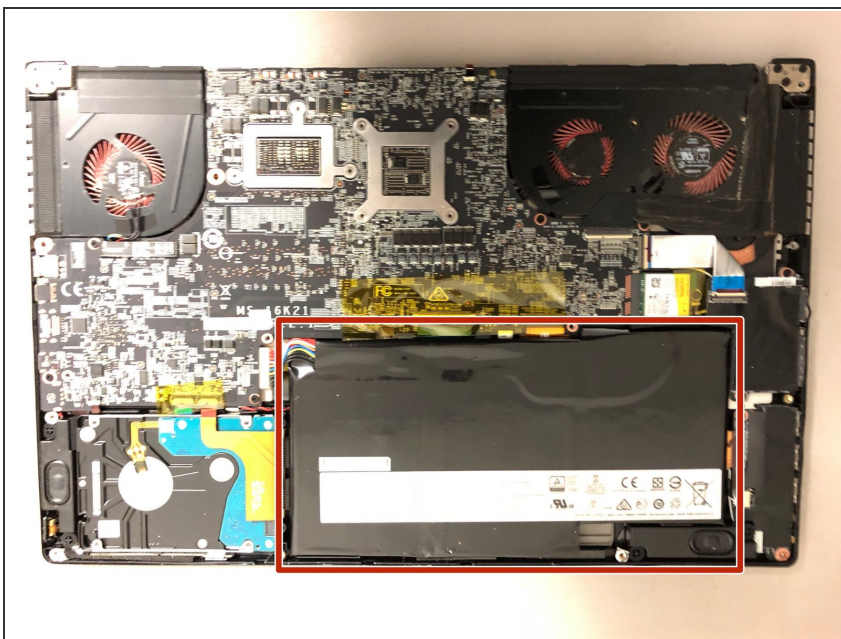
## Step 2



- Disconnect the SATA cables from the motherboard using a plastic spudger.
- Gently pull out the SATA cables out of the ports.
- Grab the auburn color cable and lift up the hard drive. Slide out the hard drive while holding onto the cable.

⚠ Cables are fragile. Do not apply excessive force.

## Step 3 — Battery



- ★ This is where the battery is located
- Gently pry the battery from laptop.
- i The battery is attached to the laptop with a strong adhesive.



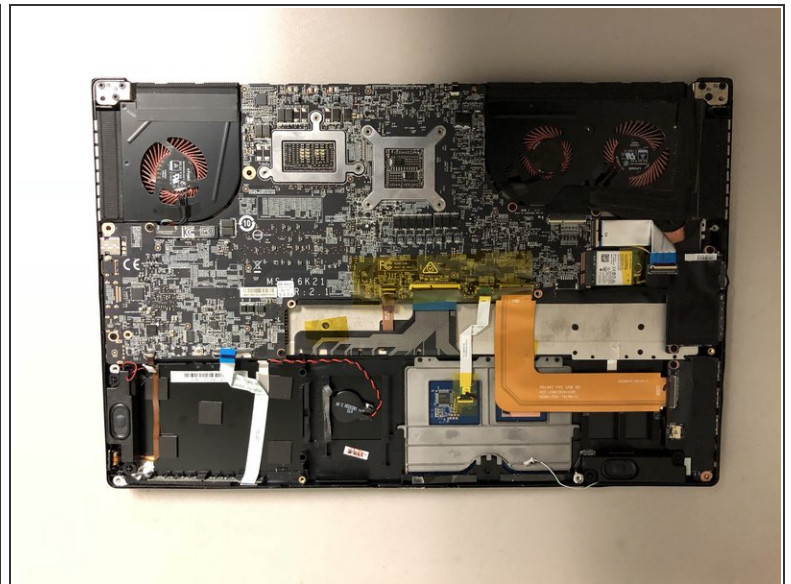
## Step 4



- Lift the battery from laptop.

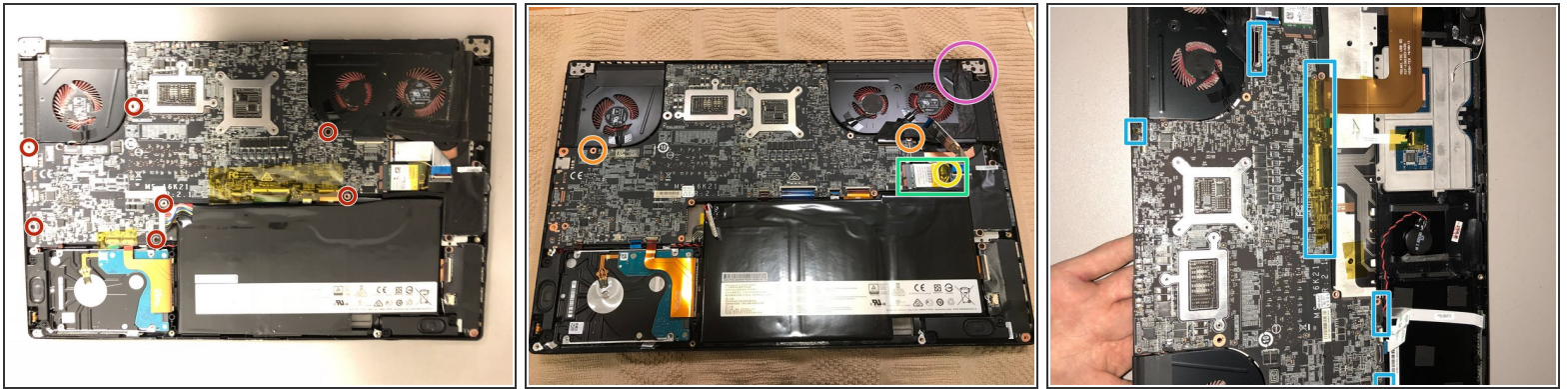
⚠ Do not yank, tug, or pull as the battery is still attached to the laptop by way of wires.

## Step 5



- Use tweezers to gently wiggle the connecting wires free.

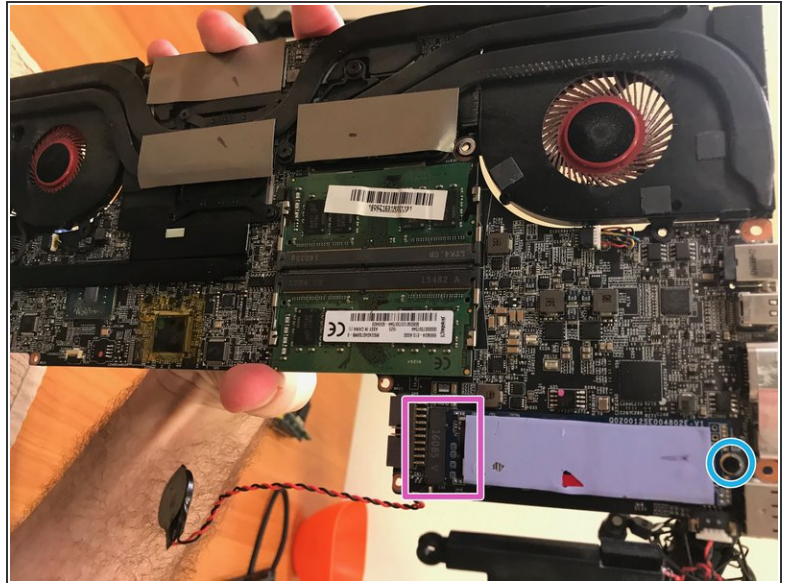
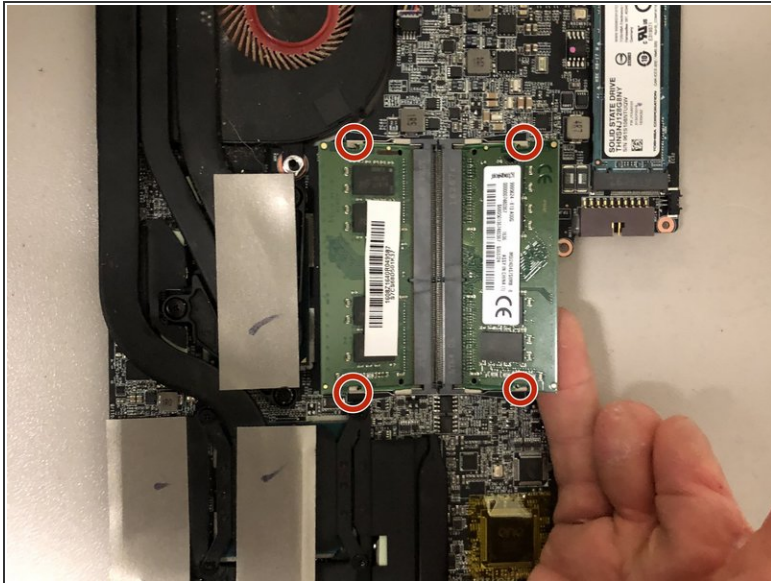
## Step 6 — RAM or NVMe



- Once the battery is out, remove the screws at each standoff with a #00 Phillips screwdriver.
- Remove the two additional screws under the fans.
- Remove the screw securing the Wi-Fi card.
- Disconnect and remove the wifi card from the motherboard.
- Disconnect the additional cables connected to the motherboard.
- Carefully lift the motherboard out of the computer.
  - **The screen cable in the top left is short and restricts movement when removing the motherboard.**



## Step 7



- After flipping the motherboard over, locate the RAM slots.
- Release each stick of RAM by carefully prying the metal clips away.
- Remove M2 screw securing NVME drive.
- Remove or replace NVME drive.

To reassemble your device, follow these instructions in reverse order.