



# MSI GS63VR 6RF Stealth Pro WiFi Card Replacement

Replacing the wireless card in the Stealth Pro laptop.

Written By: Nabil Ranjbar



# INTRODUCTION

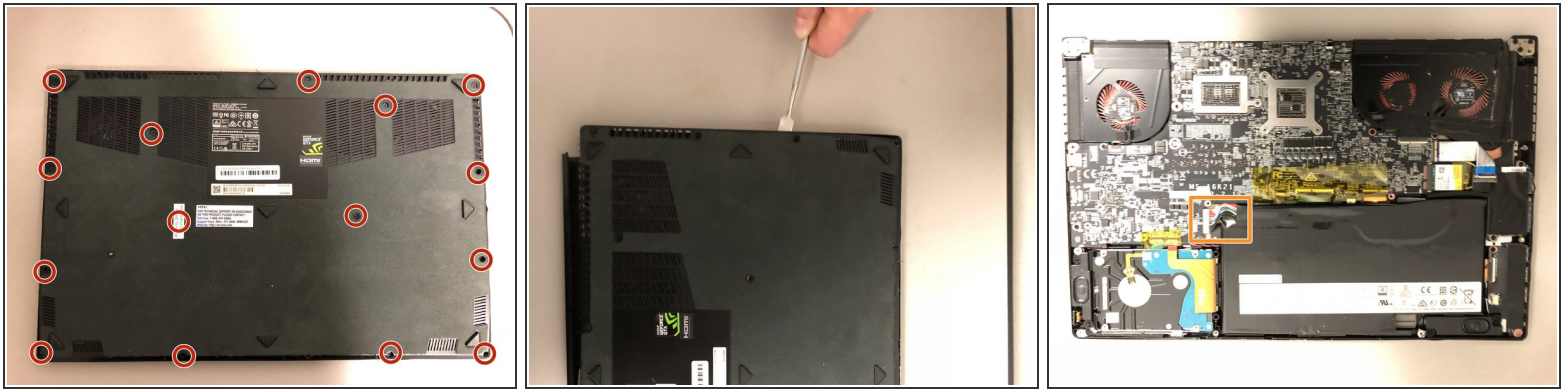
If you're having connectivity issues with your Stealth Pro, or simply want an upgrade, this guide will walk you through the replacement process.

---

## TOOLS:

- [Heavy-Duty Spudger](#) (1)
  - [Phillips #00 Screwdriver](#) (1)
  - [Tweezers](#) (1)
-

## Step 1 — Wi-Fi Card

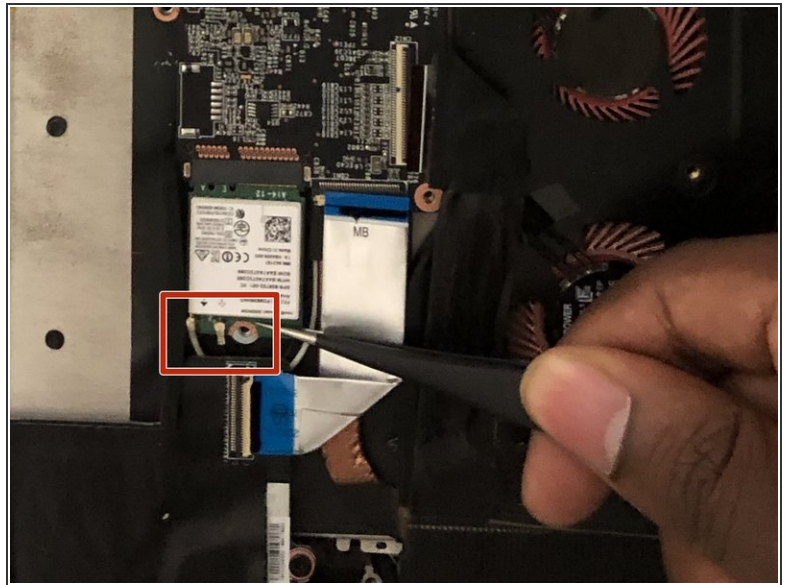
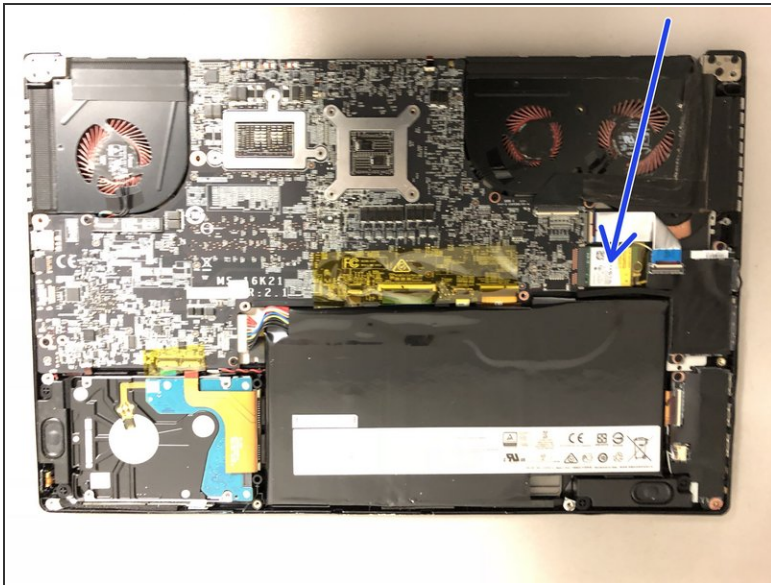


✦ Turn off the laptop and make sure it is unplugged from power before proceeding.

- Unscrew the 15 screws on the bottom panel using a Phillips #00 screwdriver.
- Pry open the back cover with a plastic spudger.
- Lift the back cover away from computer. Make sure nothing is attached.
- Unplug the battery cable from the motherboard to prevent a ground fault.

⚠ Too much pressure from the spudger can break the clips that secure the back panel, but some flex is not dangerous.

## Step 2



- Unscrew the single screw from the Wifi card using a Phillips #00 screwdriver.
- Apply upward pressure on the cables using a plastic tweezer.
- Using either your hand or the plastic tweezer, grab and wiggle the card out of the socket.
- Pull the card upward from the slot.

⚠ Wifi cables are fragile.

- To reassemble the laptop, simply reverse these steps.