



MSI GS63VR 7RF Stealth Pro Battery Replacement

How to replace the battery of a MSI GS63VR 7RF Stealth Pro.

Written By: Chris Gifford



INTRODUCTION

Over time, nearly every battery is going to need to be replaced. Is it time to replace yours? This is how you can do that.



TOOLS:

- [Spudger](#) (1)
- [Phillips #1 Screwdriver](#) (1)



PARTS:

- [BTY-M6J Battery](#) (1)

Step 1 — Battery



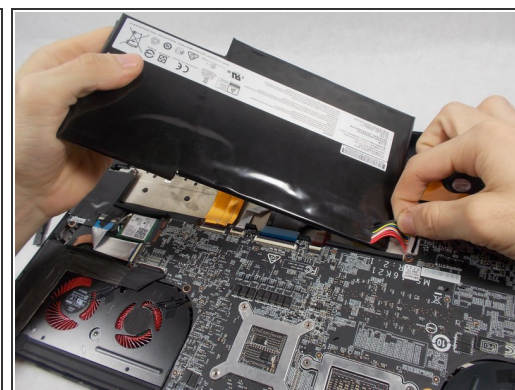
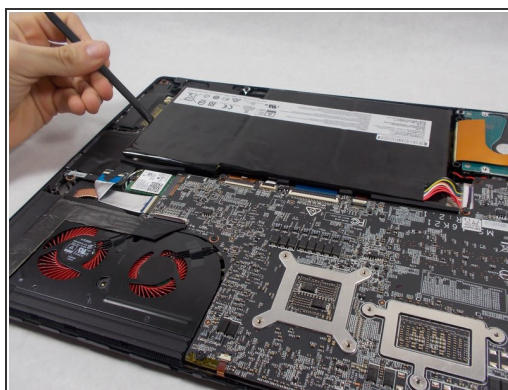
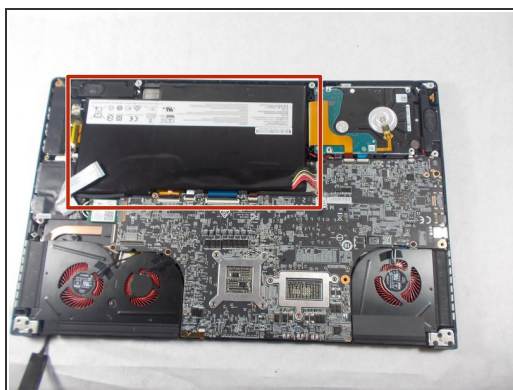
- Use the spudger to separate the back plate from the rest of the computer with the screen up like in the picture.
- Once the back plate is loose, close the screen for an easier time properly removing it.

Step 2



- Using a Phillips Head #1 screwdriver, unscrew the 15 screws on the bottom of the device
- After all the screws are unscrewed, remove the bottom plate
- ⓘ Keep track of all the screws and which slot they came from, as they slightly differ. We recommend this system: lay out on a piece of paper and pretending the paper is the device. Place the screws on the paper approximately where they would go.

Step 3



- Locate the battery
- Wedge the spudger underneath the battery, and apply pressure to lift it away from the rest of the device.
- Gently pull and wiggle the multiple colored wired connector out from the socket.

To reassemble your device, follow these instructions in reverse order.