



MSI GS63VR 7RF Stealth Pro Hard Drive Replacement

How to replace the hard drive in a MSI GS63VR 7RF Stealth Pro.

Written By: Chris Gifford



INTRODUCTION

A properly functioning hard drive is essential for a gaming computer. A faulty hard drive can slow down the computer and cause it to freeze, as well as corrupt data. If your hard drive has gone bad, here is how you can replace it.



TOOLS:

- [Phillips #1 Screwdriver](#) (1)
- [Spudger](#) (1)
- [Tweezers](#) (1)



PARTS:

- [1 TB SSD / Upgrade Bundle](#) (1)
- [250 GB SSD / Upgrade Bundle](#) (1)
- [500 GB SSD / Upgrade Bundle](#) (1)
- [2 TB SSD / Upgrade Bundle](#) (1)

Step 1 — Battery



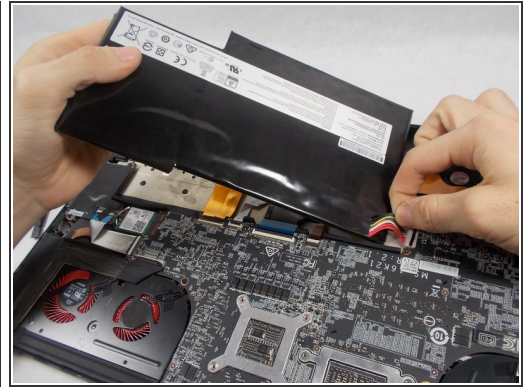
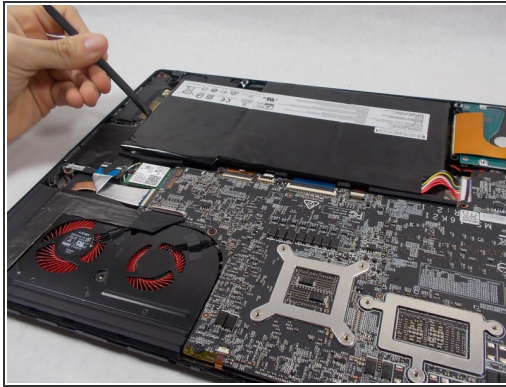
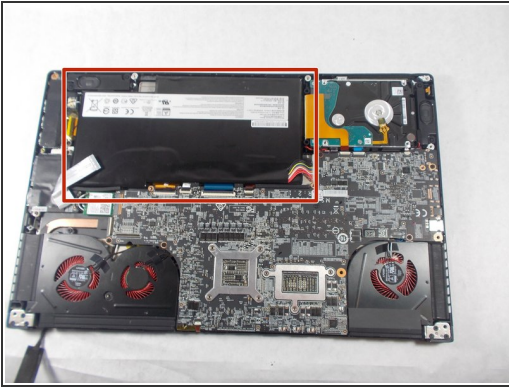
- Use the spudger to separate the back plate from the rest of the computer with the screen up like in the picture.
- Once the back plate is loose, close the screen for an easier time properly removing it.

Step 2



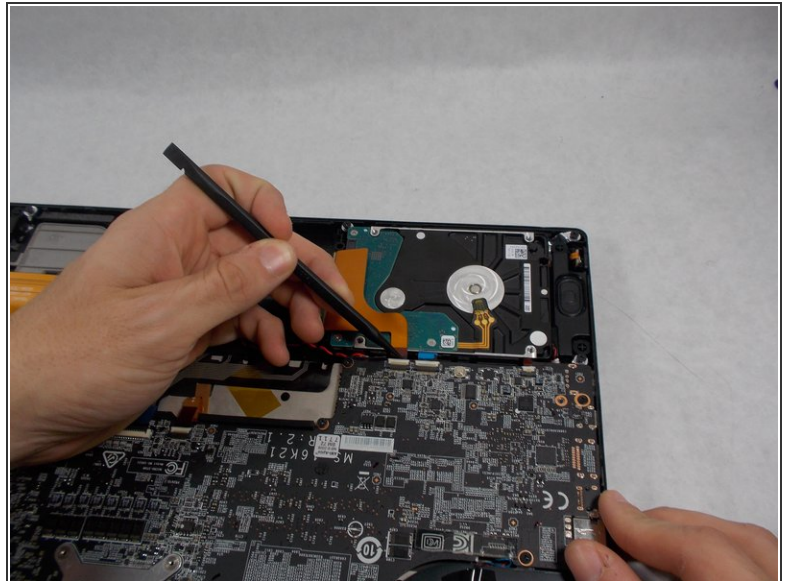
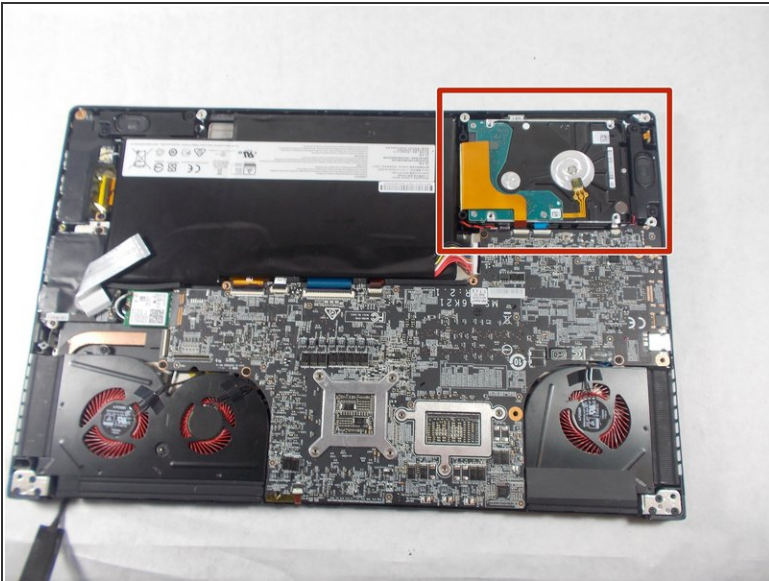
- Using a Phillips Head #1 screwdriver, unscrew the 15 screws on the bottom of the device
- After all the screws are unscrewed, remove the bottom plate
- ⓘ Keep track of all the screws and which slot they came from, as they slightly differ. We recommend this system: lay out on a piece of paper and pretending the paper is the device. Place the screws on the paper approximately where they would go.

Step 3



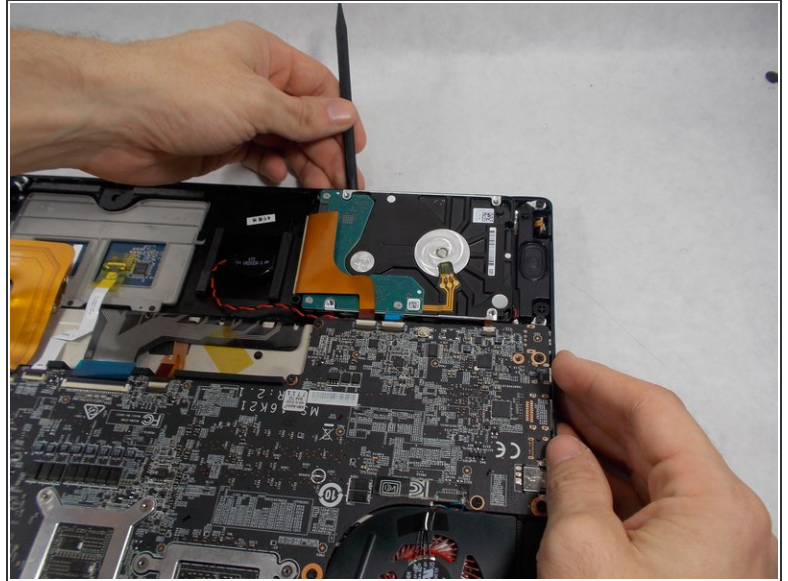
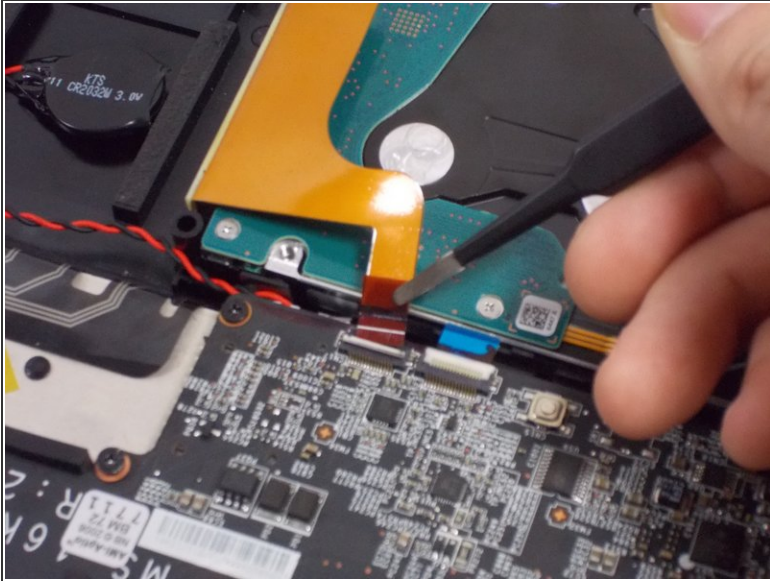
- Locate the battery
- Wedge the spudger underneath the battery, and apply pressure to lift it away from the rest of the device.
- Gently pull and wiggle the multiple colored wired connector out from the socket.

Step 4 — Hard Drive



- Locate the hard drive.
- Using a spudger lift the ribbon cable connector.

Step 5



- Use the tweezers to lift the back tab and pull it back until the ribbon cable disconnects.
- Wedge the spudger between the hard drive and the device and apply pressure to pry the two apart, and then remove the hard drive.

To reassemble your device, follow these instructions in reverse order.