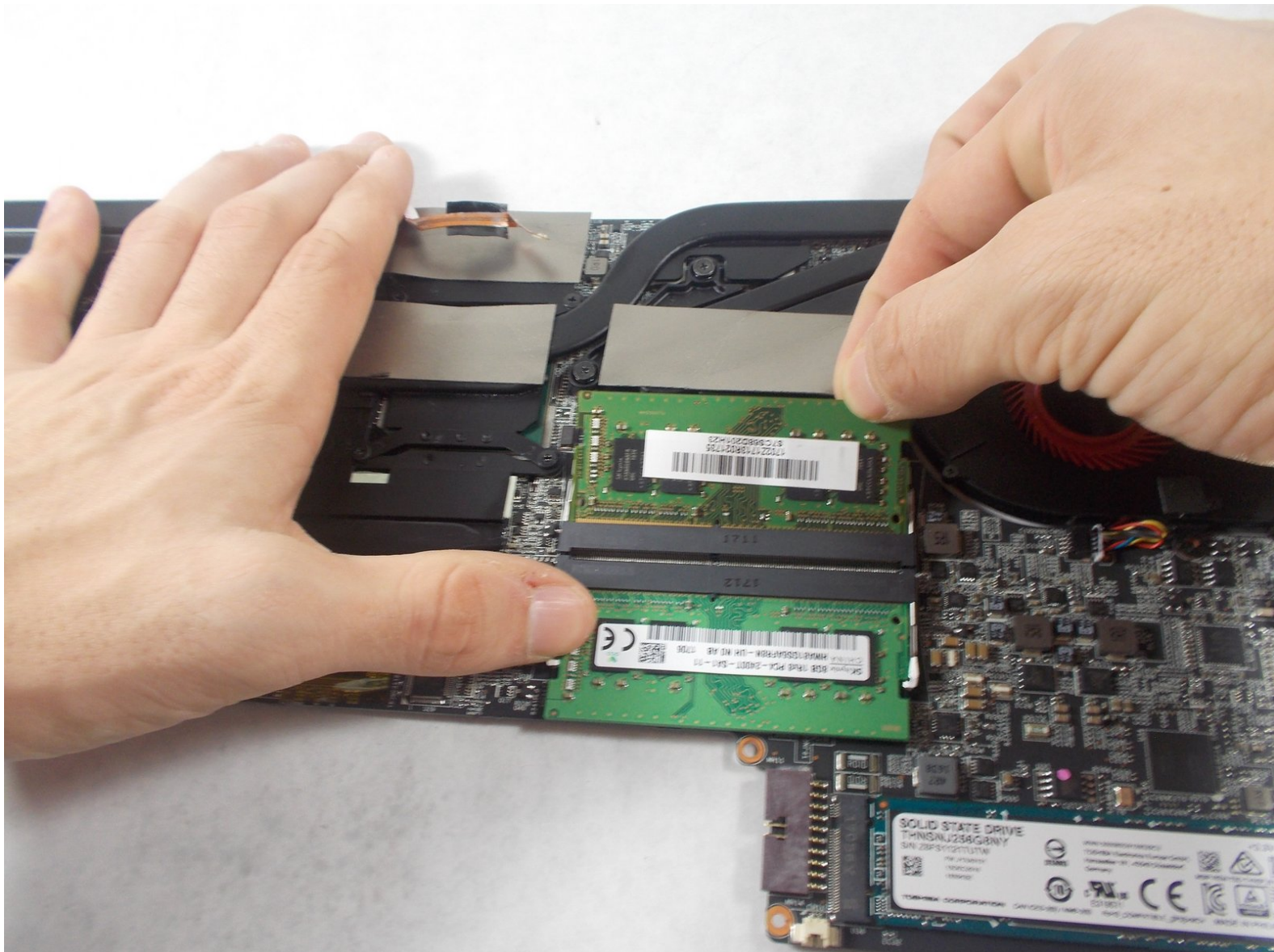




MSI GS63VR 7RF Stealth Pro RAM Replacement

How to replace the RAM of a MSI GS63VR 7RF Stealth Pro.

Written By: Chris Gifford



INTRODUCTION

RAM effects the total memory and speed of a laptop. If your RAM is faulty, you will need a lot of patience for it to always be slow. However, if you replace it, like this guide tells you to, your device will perform much better.



TOOLS:

- [Phillips #1 Screwdriver](#) (1)
 - [Spudger](#) (1)
 - [Tweezers](#) (1)
-

Step 1 — Battery



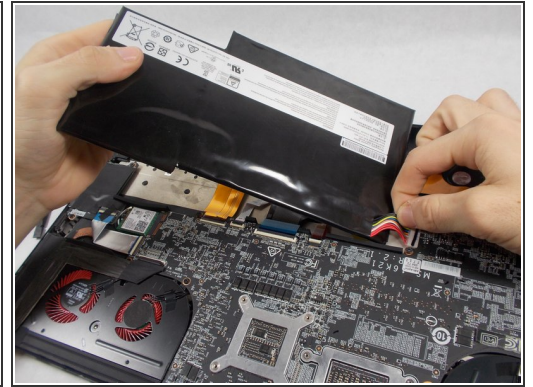
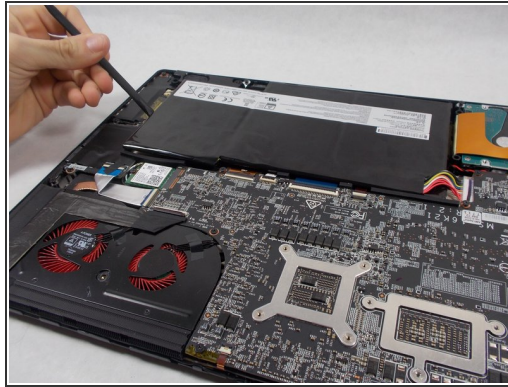
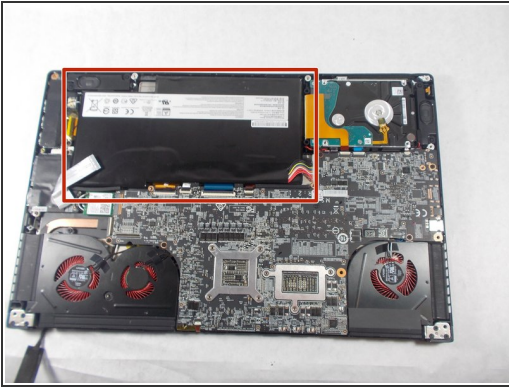
- Use the spudger to separate the back plate from the rest of the computer with the screen up like in the picture.
- Once the back plate is loose, close the screen for an easier time properly removing it.

Step 2



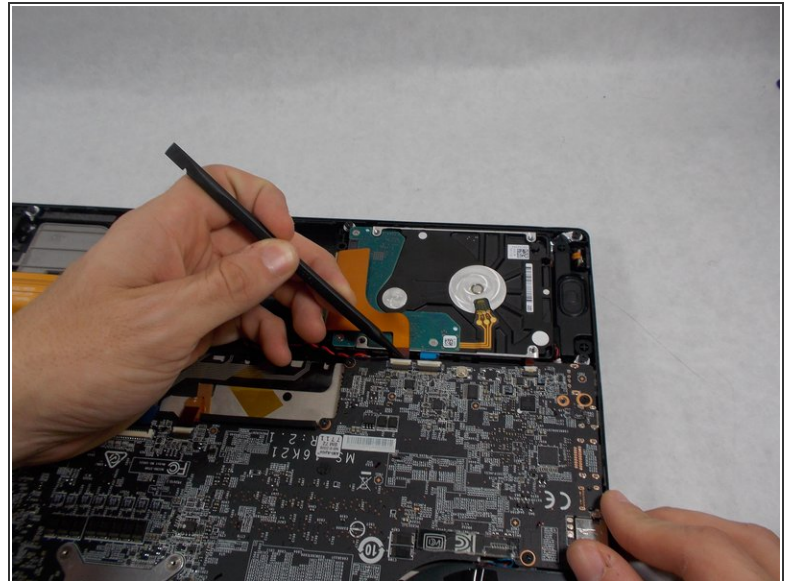
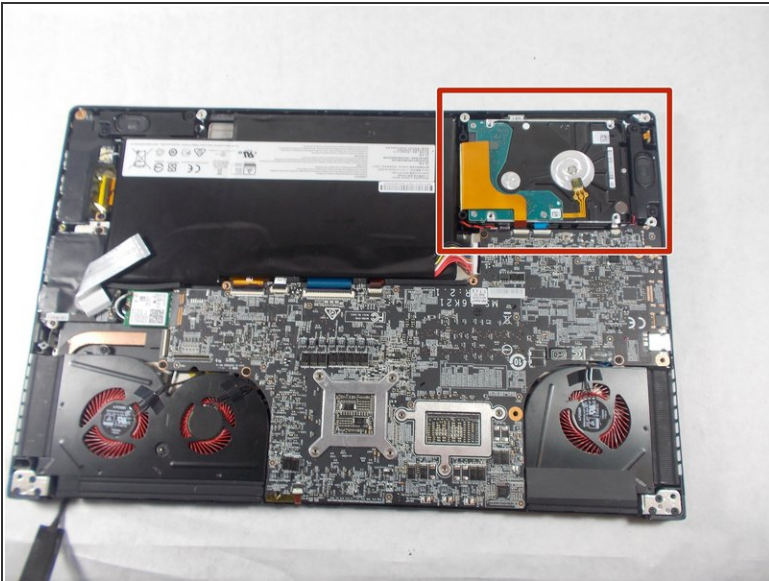
- Using a Phillips Head #1 screwdriver, unscrew the 15 screws on the bottom of the device
- After all the screws are unscrewed, remove the bottom plate
- ⓘ Keep track of all the screws and which slot they came from, as they slightly differ. We recommend this system: lay out on a piece of paper and pretending the paper is the device. Place the screws on the paper approximately where they would go.

Step 3



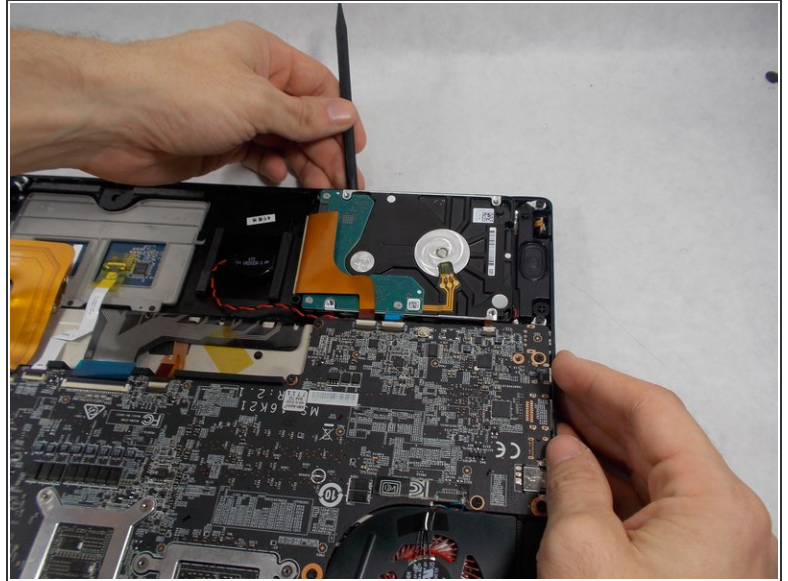
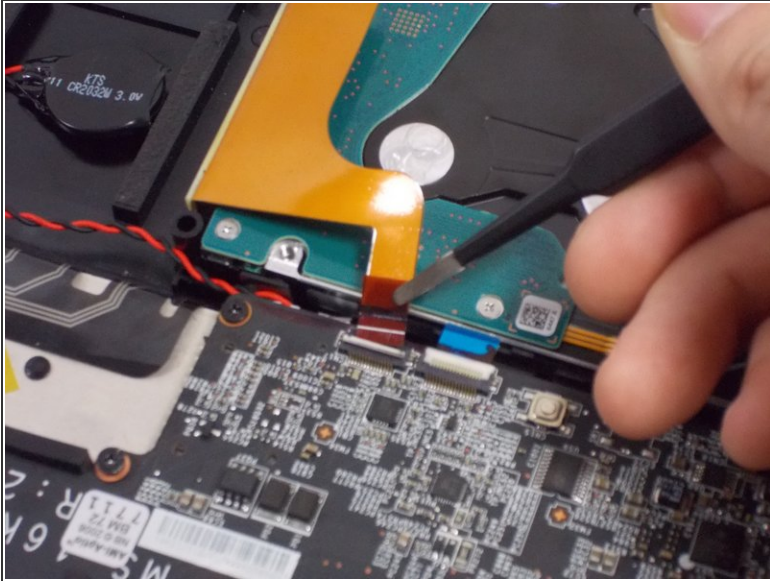
- Locate the battery
- Wedge the spudger underneath the battery, and apply pressure to lift it away from the rest of the device.
- Gently pull and wiggle the multiple colored wired connector out from the socket.

Step 4 — Hard Drive



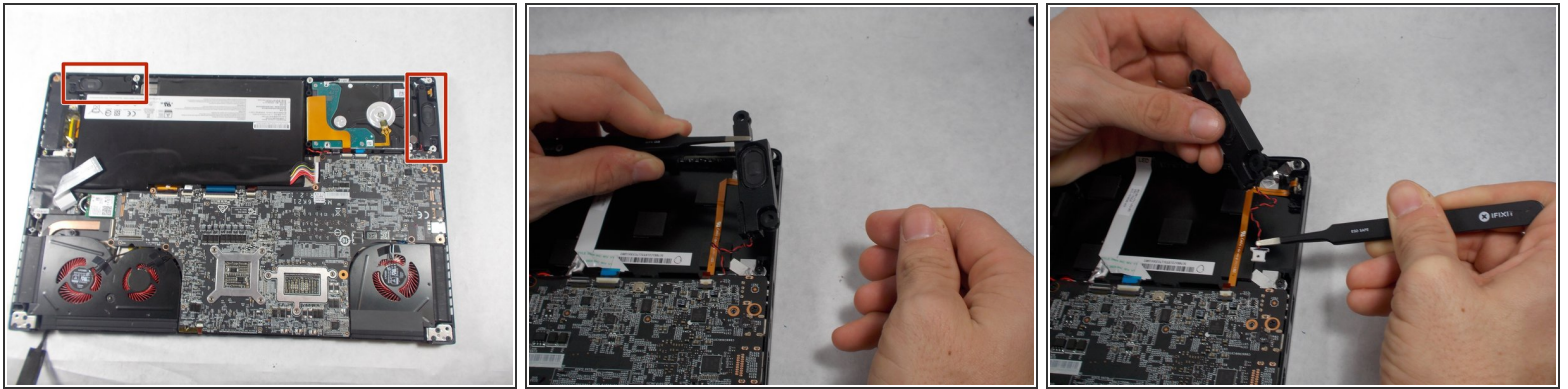
- Locate the hard drive.
- Using a spudger lift the ribbon cable connector.



Step 5



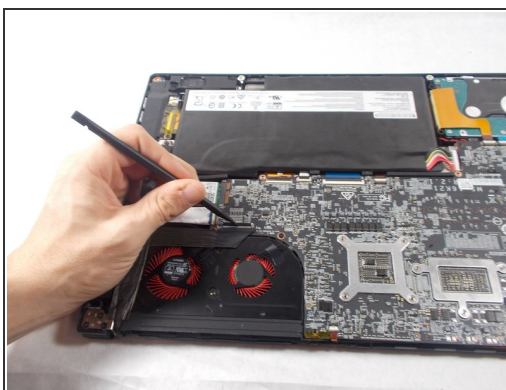
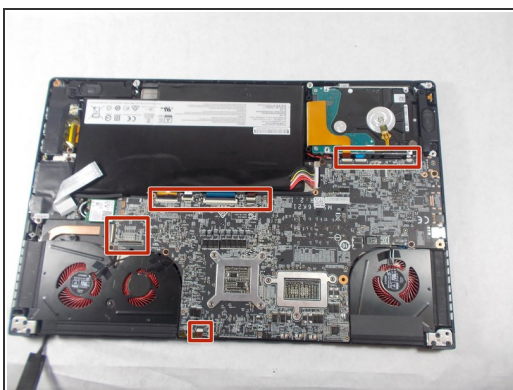
- Use the tweezers to lift the back tab and pull it back until the ribbon cable disconnects.
- Wedge the spudger between the hard drive and the device and apply pressure to pry the two apart, and then remove the hard drive.

Step 6 — Speakers



- First locate the speaker(s).
 - Use the tweezers to lift the speaker from its position.
 - Grab the multi-colored wire with the tweezers and gently pull back until the speakers releases from its socket.
-  Applies for both speakers.
-  Keep track of which speaker went where. The connectors for the speakers are unique; you cannot use a speaker that should go on the right side on the left side and vice versa.

Step 7 — SSD



- First, locate all the ribbon cables that are connected to the motherboard.
- Lift the ribbon cable connector tabs with the spudger gently.
- Using the tweezers, gently pull back on the ribbon cable until it is completely out of the socket.

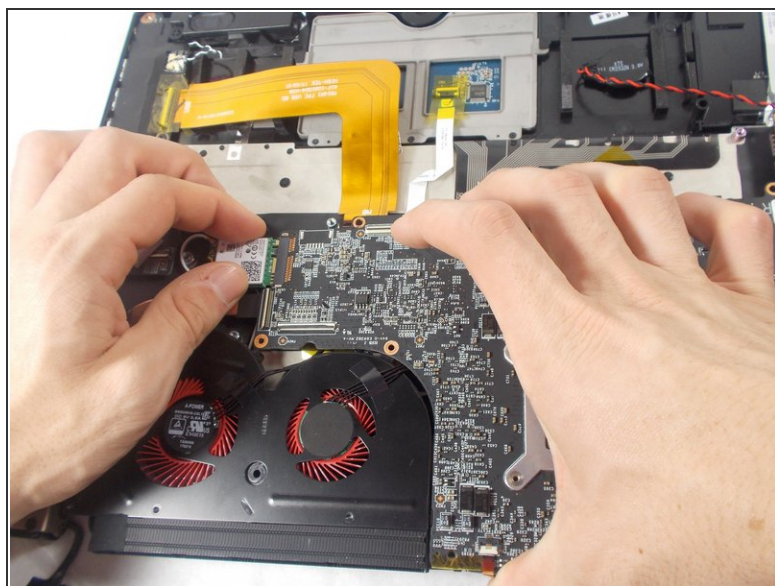
⚠ Be very gentle while dealing with ribbon cables. If one gets damaged the component it links to will not function.

Step 8



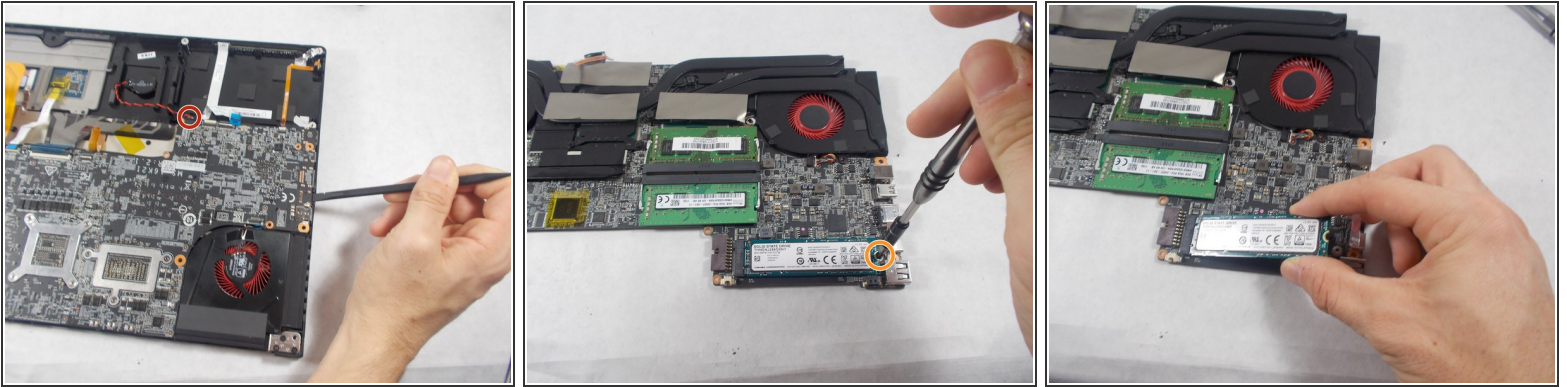
- First, locate all the screws holding down the Motherboard.
- Remove all the screws using the #1 Phillips head screw driver.

Step 9



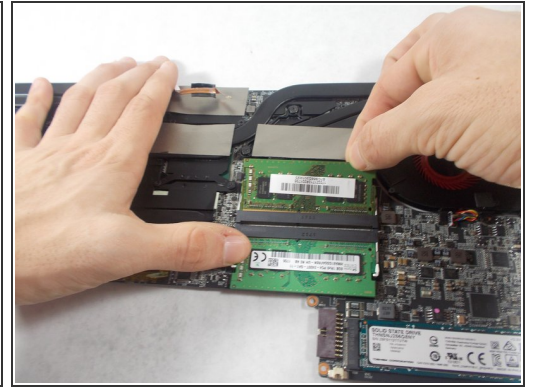
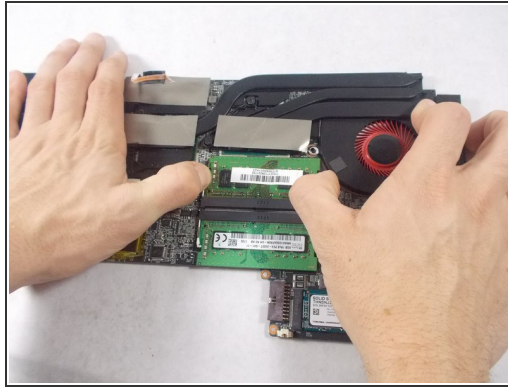
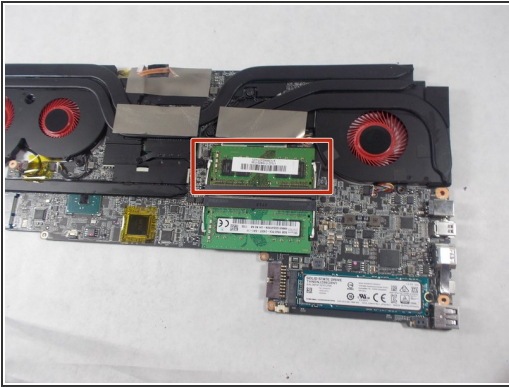
- Next, locate the Wi-Fi chip.
- Use the #1 Phillips head screwdriver to remove the screw attaching the Wi-fi chip to the motherboard.

Step 10



- Use the spudger to lift the motherboard up and remove it from the laptop, then flip the now separated motherboard over.
- Using tweezers, disconnect the red wire circled in the picture; where the hard drive would be.
- Locate the SSD and the screw holding it in.
- Unscrew the one Screw using a #1 Phillips Head screwdriver.
- The SSD will want to lift with that screw being removed, from here grab it and pull it out gently.

Step 11 — RAM



- Locate the RAM.
 - Pull back the two tabs holding it into place, it will pop out.
 - Pull it out.
- ☒ When inserting the new RAM, it will snap into place.

To reassemble your device, follow these instructions in reverse order.