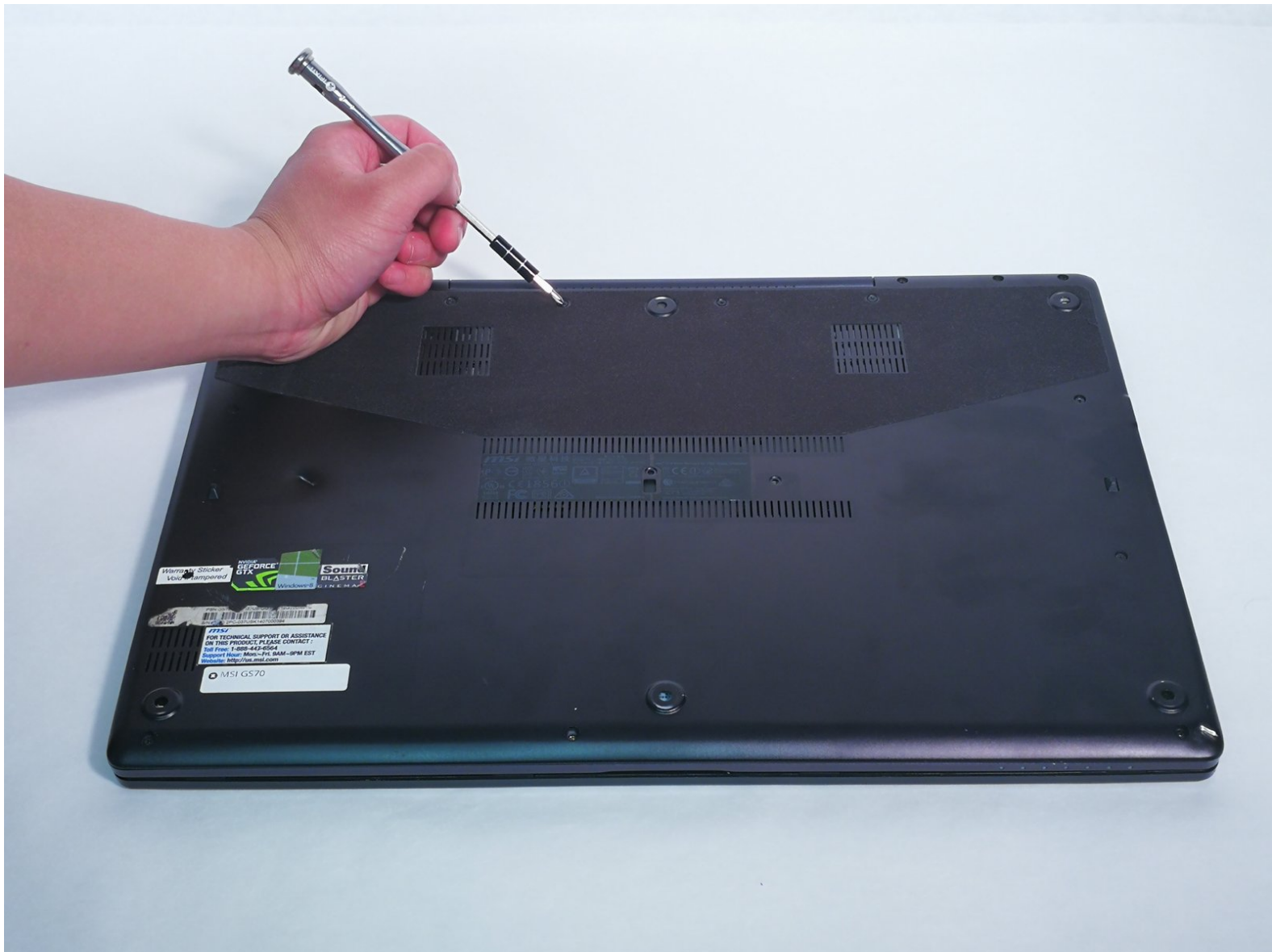




MSI GS70 Battery Replacement

Directions on how to replace a weak or defective battery.

Written By: Billy Faulconer



INTRODUCTION

Use this guide when you want to replace and/or recycle your battery.



TOOLS:

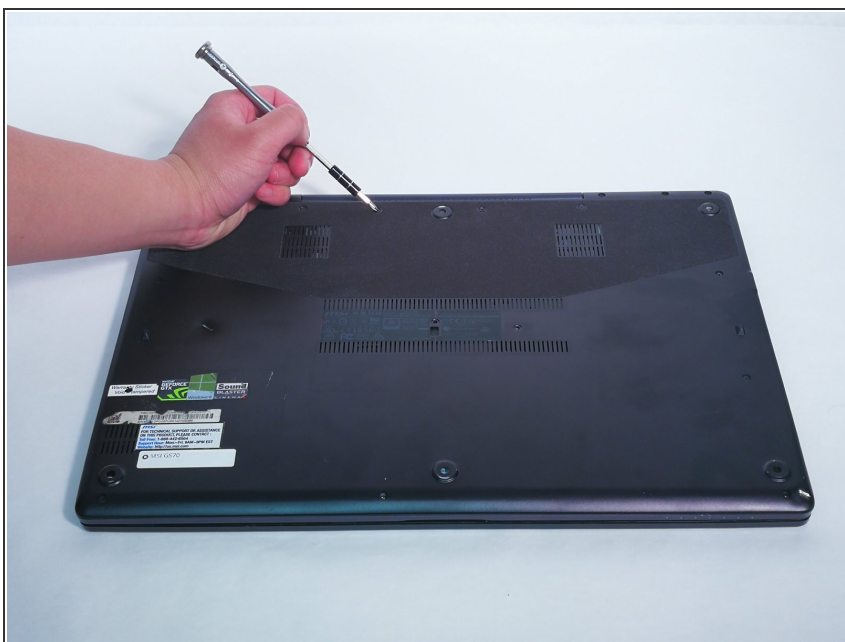
- [Magnetic Project Mat](#) (1)
- [Spudger](#) (1)
- [JIS #1](#) (1)




PARTS:

- [Replacement Battery](#) (1)

Step 1 — Battery



 Make sure that the laptop is turned off before starting.

- Place laptop with the bottom plate facing up.

Step 2



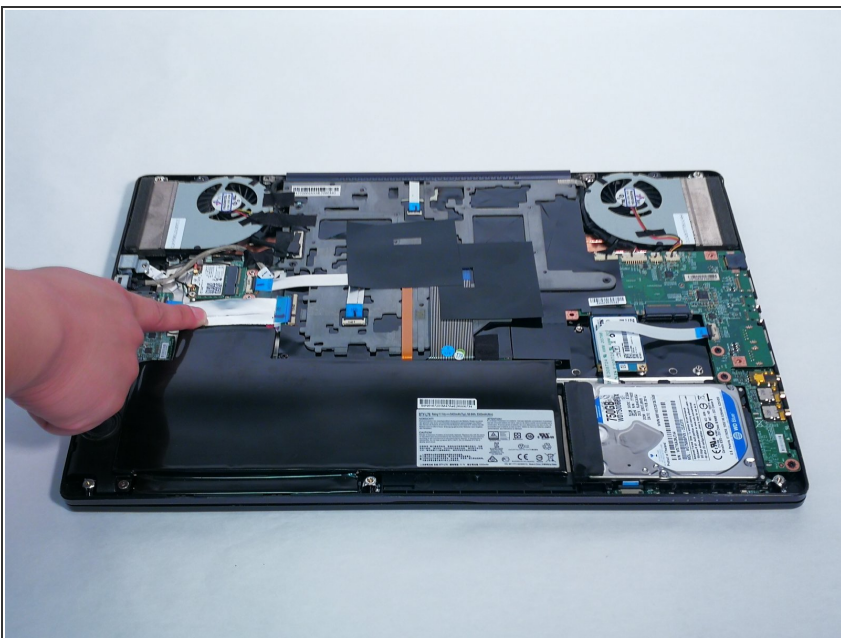
- Remove all screws using the JIS #1 screwdriver.

Step 3



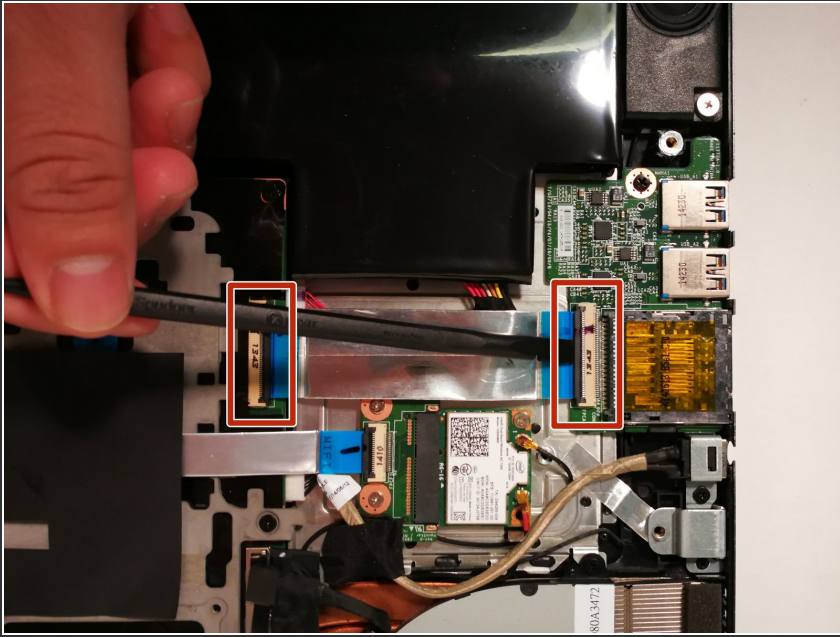
- Remove the back plate.
- Locate the battery.

Step 4



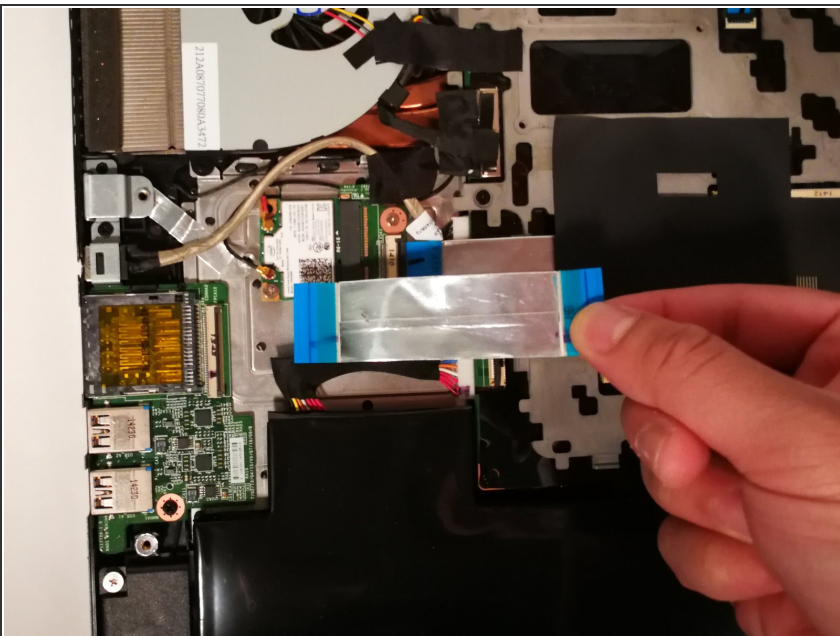
- Locate the foil connector above the battery.

Step 5



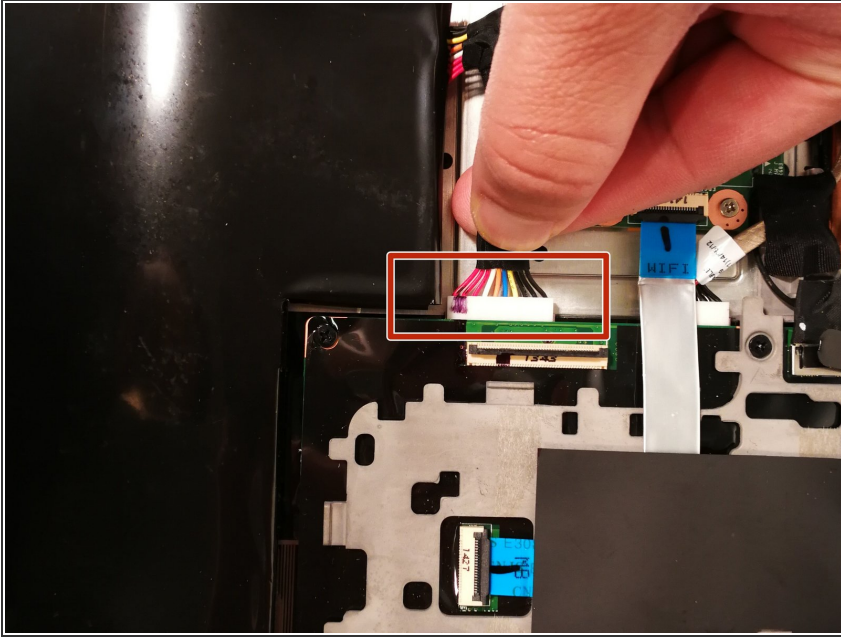
- Flip up both black clips with your spudger.

Step 6



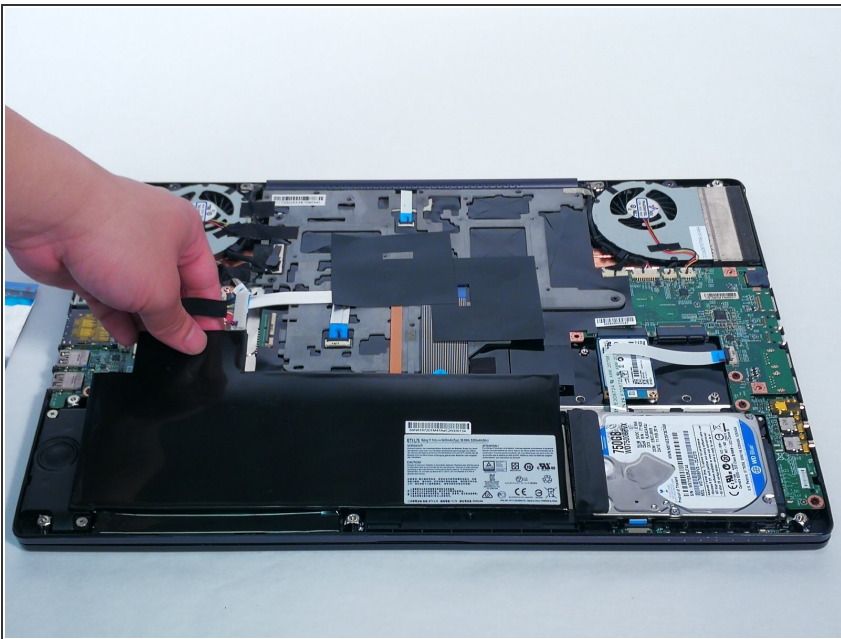
- Remove the foil connector by pulling on the blue tabs.

Step 7



- ❗ After the foil connector is removed you will see an 8 pin connector.
- Disconnect the 8 Pin connector.

Step 8



- Lift the battery and remove.

To reassemble your device, follow these instructions in reverse order.