



# MSI GS70 Hard Drive Replacement

This guide is intended to assist in Hard Drive replacement.

Written By: Matthew Tasker



# INTRODUCTION

- Replace the stock hard drive



## TOOLS:

- [Magnetic Project Mat](#) (1)
- [JIS #1](#) (1)



## PARTS:

- [Replacement Hard Drive](#) (1)

## Step 1 — Hard Drive



- Locate and Remove all screws from the backplate.

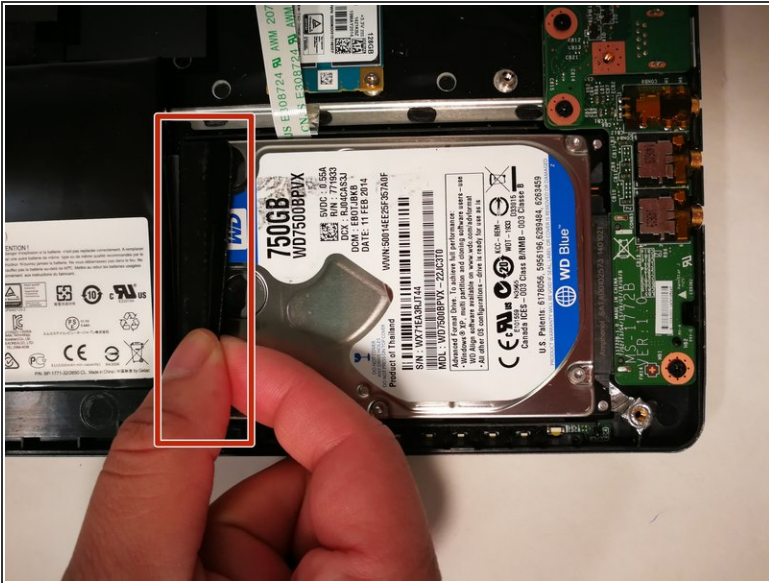
## Step 2



- Locate the Hard Drive

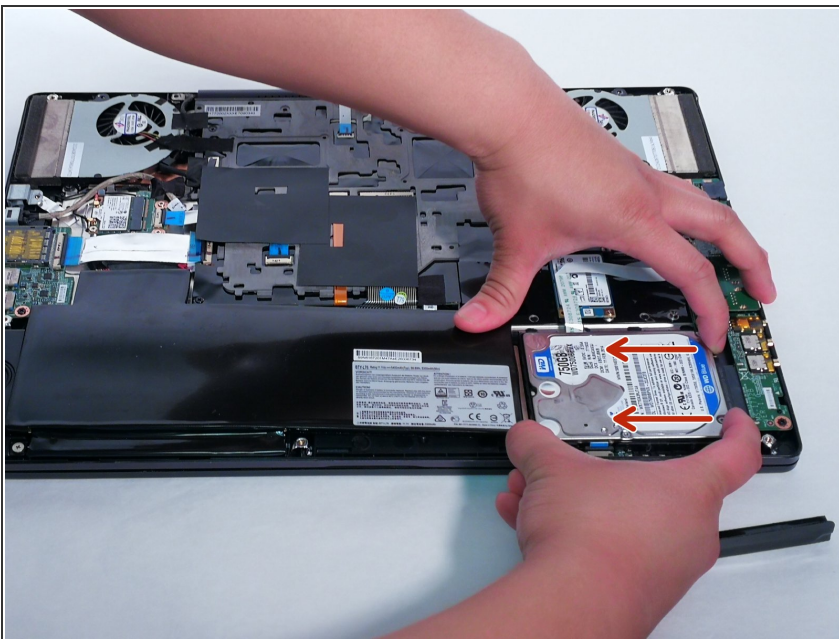


## Step 3



- Locate the black rubber spacer
- Remove space by gently pulling the flap

## Step 4



- With two hands slide the Hard Drive to the left.

## Step 5



- Lift the Hard Drive using the Spudger.
- Pull up and remove the Hard Drive

To reassemble your device, follow these instructions in reverse order.