



MSI GS70 Solid State Drive Replacement

This guide will show product owners how to access and replace their solid state drive.

Written By: Gene Abuan



INTRODUCTION

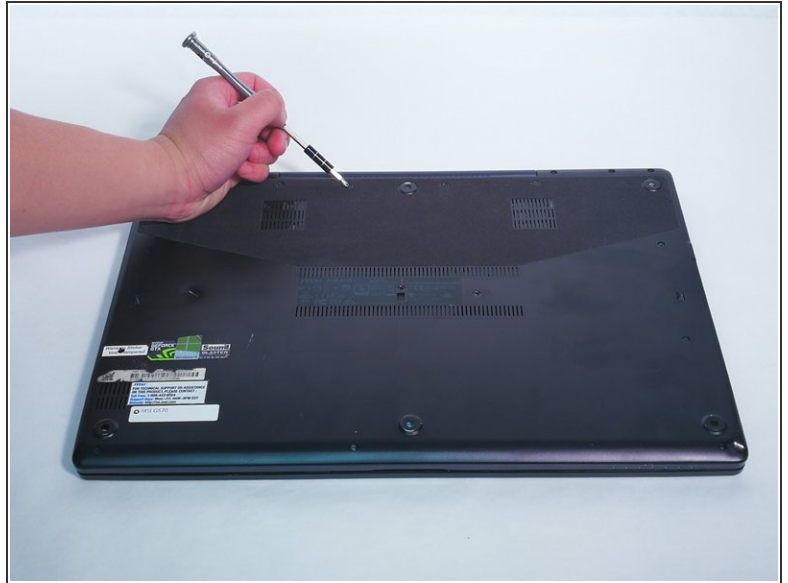
Just like the hard disk drive, the solid state drive is another type of storage media for personal computers. If there is ever a moment where you need to replace the solid state drive, then this guide will show you how.



TOOLS:

- [iFixit screwdriver with a J1 bit](#) (1)
 - [Magnetic Project Mat](#) (1)
-

Step 1 — Solid State Drive



- Locate and remove all screws securing the back plate. Place the screws on the magnetic mat.
- Locate one of the openings on the side and gently pull the back plate up to remove it.

Step 2



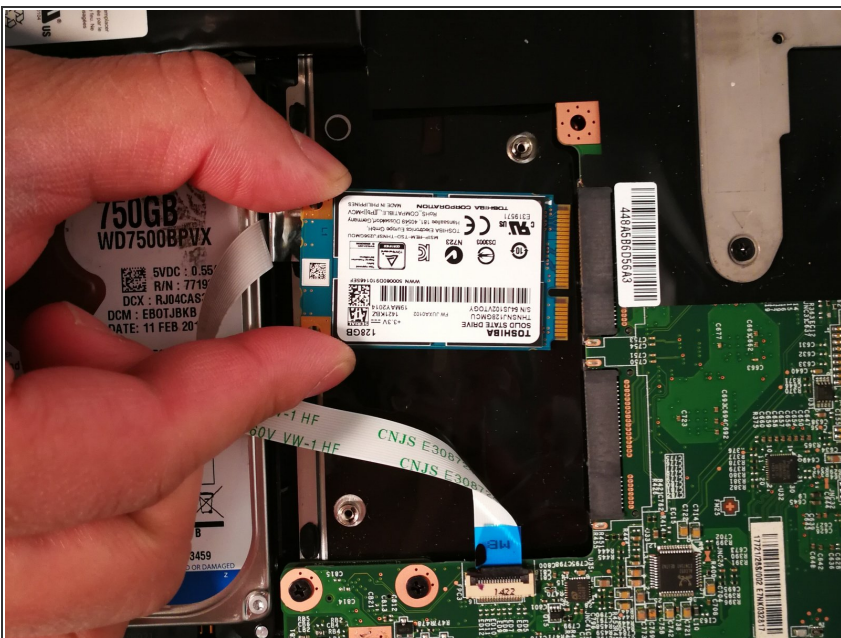
- Locate the solid state drive. It is initially obscured by a connector, its okay to push away the connector to access the solid state drive.

Step 3



- Remove the screw holding the solid state drive. Place the screw on the magnetic mat

Step 4



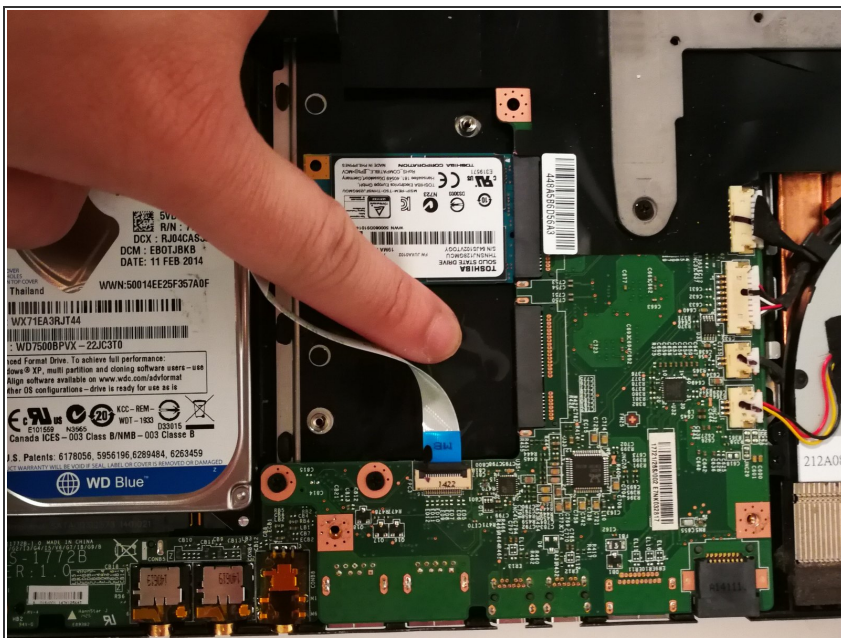
- Gently remove the solid state drive.

Step 5



- There are different form factors for solid state drives and so you have to pick the appropriate one.
- The MSI GS70 will only accept 50mm solid state drives so buy accordingly.

Step 6



- There is a second solid state drive right next to the first one if you want to add another solid state drive.

Once you have secured the solid state drive, push and screw in the back plate.