



MSI GT70 MS-1763 Hard Drive Replacement

Step by step guide to replace your hard drive in your MSI GT70 MS-1763

Written By: Brad Dunlap



INTRODUCTION

If your computer keeps crashing or having frequent error messages pop up it most likely your hard drive. Also if the hard drive in your laptop begins to make a loud clicking noise known as "the Click of Death", use this guide to remove and replace your hard drive.

TOOLS:

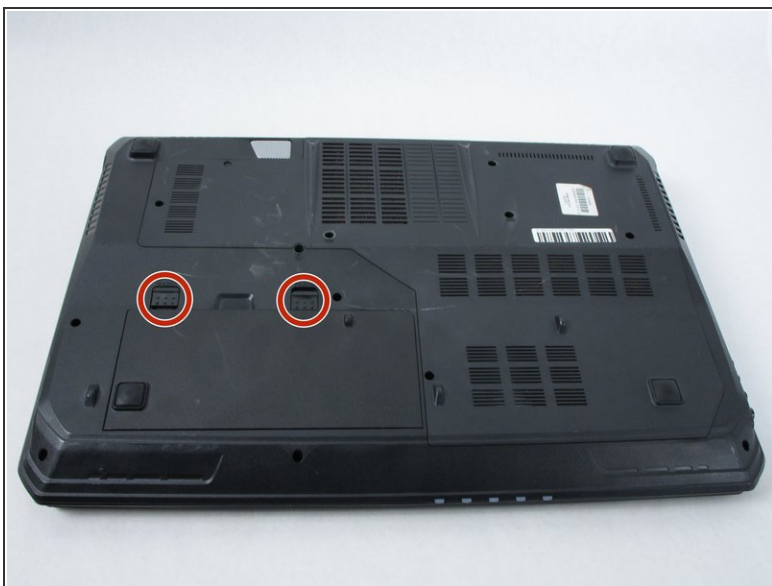
- [Phillips #0 Screwdriver](#) (1)
 - [Jimmy](#) (1)
-

Step 1 — Battery



- Power off the laptop and turn it over.

Step 2



- Release the safety latches that hold the battery in place. The left latch will stay moved up, while the right side is spring activated and will have to be held.

Step 3



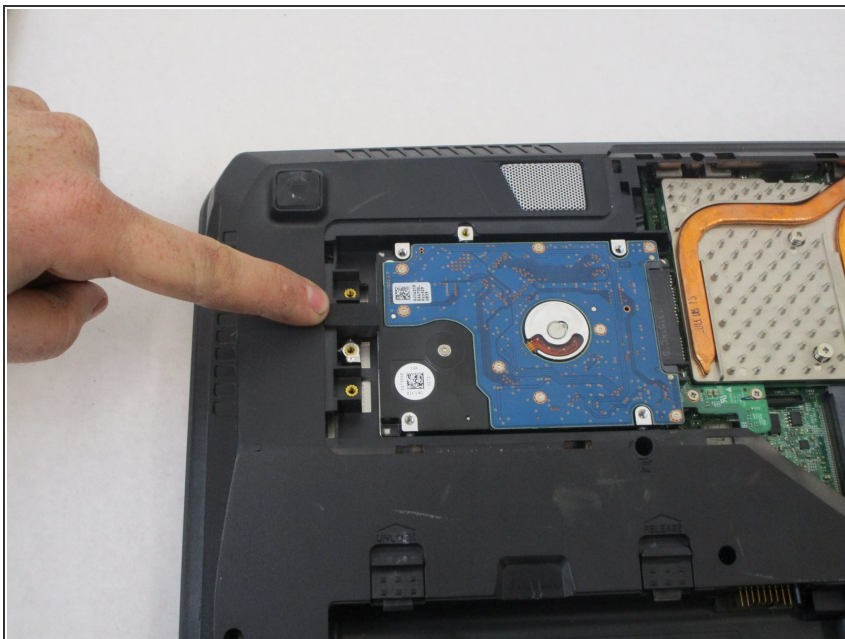
- While holding up the left latch, use a Jimmy and slide the old battery out of its compartment.

Step 4 — Hard Drive



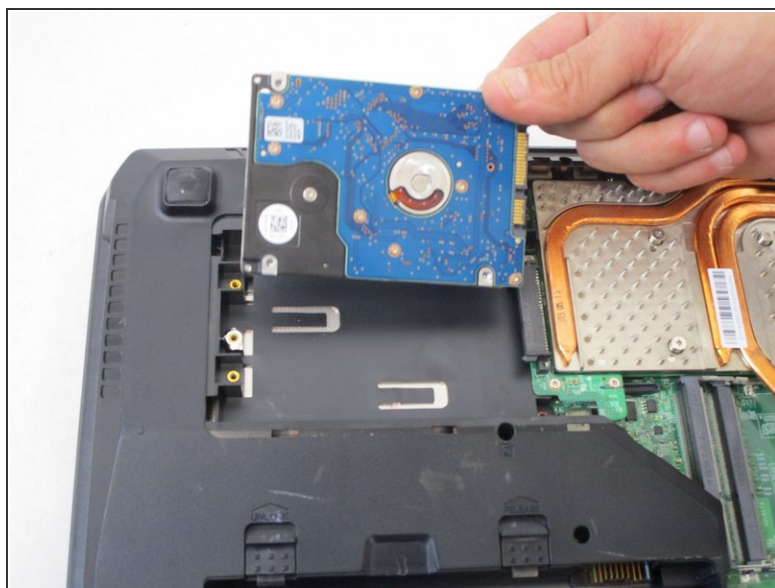
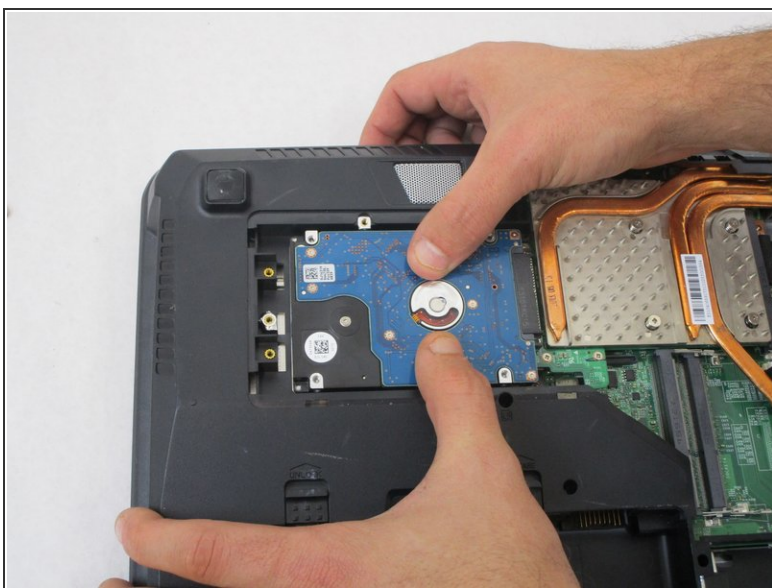
- Remove all twelve 4 mm Phillips #0 screws from the back of the laptop.
- Remove the back cover.

Step 5



- Remove the rubber spacer holding the hard drive secure.

Step 6



- Slide the hard drive to the left, removing it from its bay.

To reassemble your device, follow these instructions in reverse order.